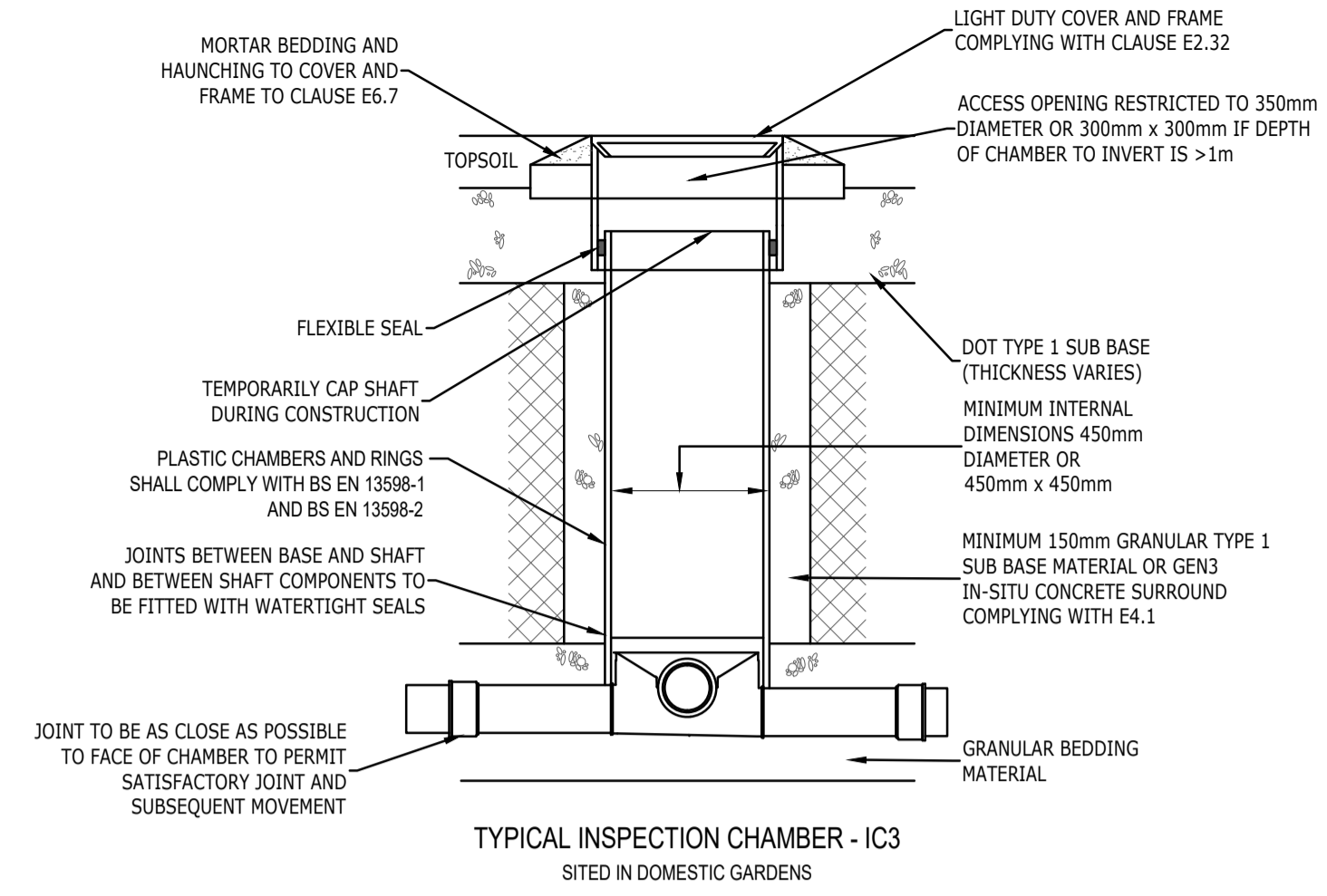
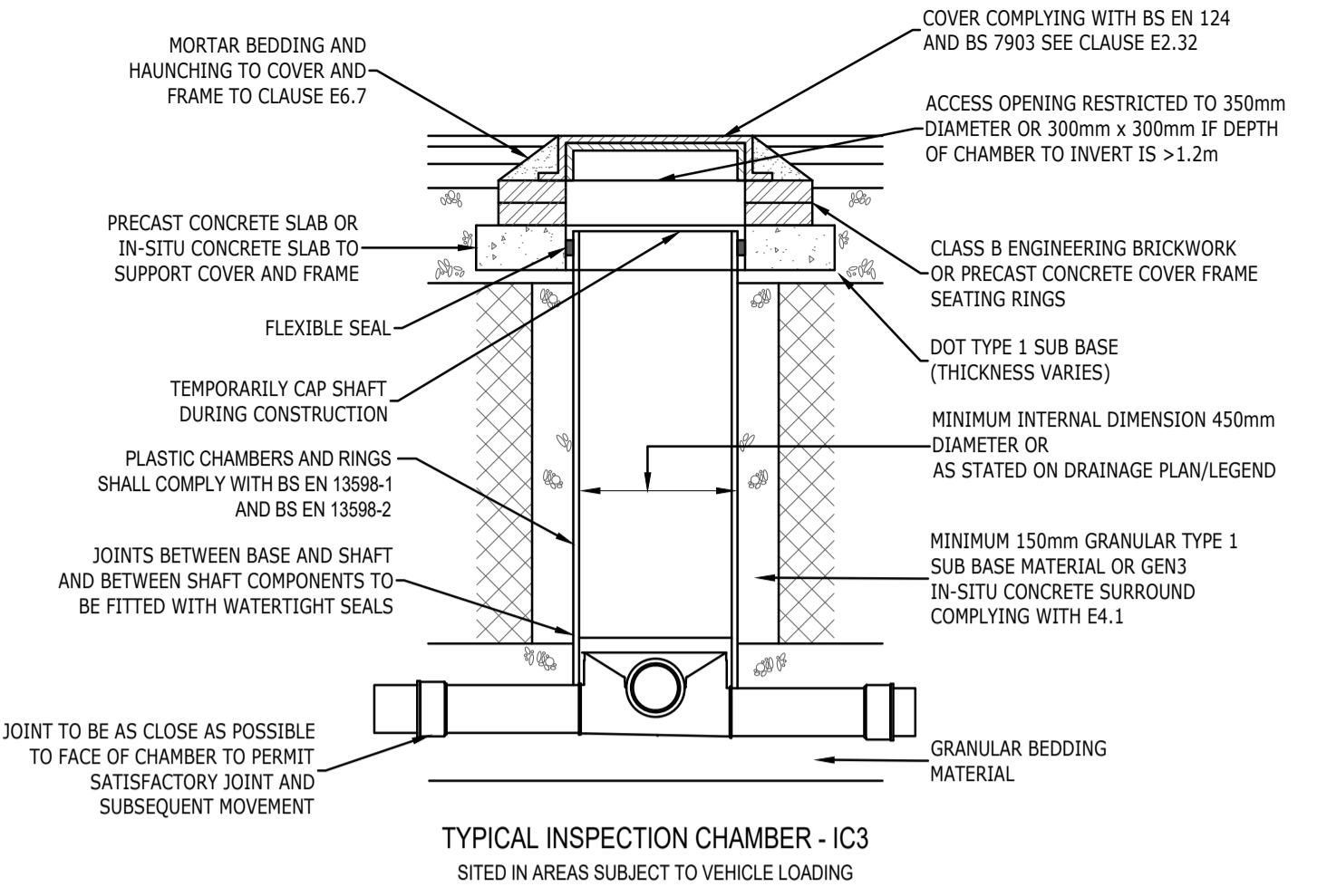


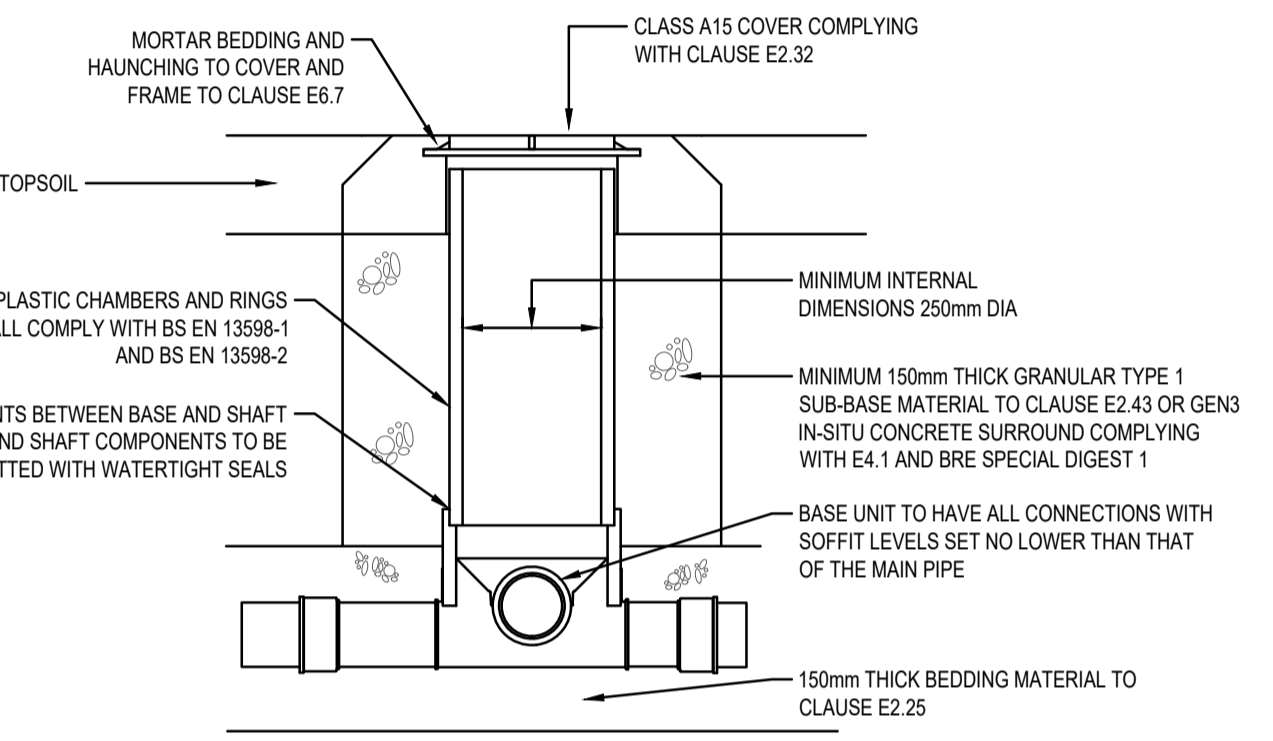
P:\24-217 - Bisham Concept Works, Yapton\Tech\Acad\Drawings\200 Series - Replan\24-217-253-254 Preliminary Drainage Construction Details.dwg



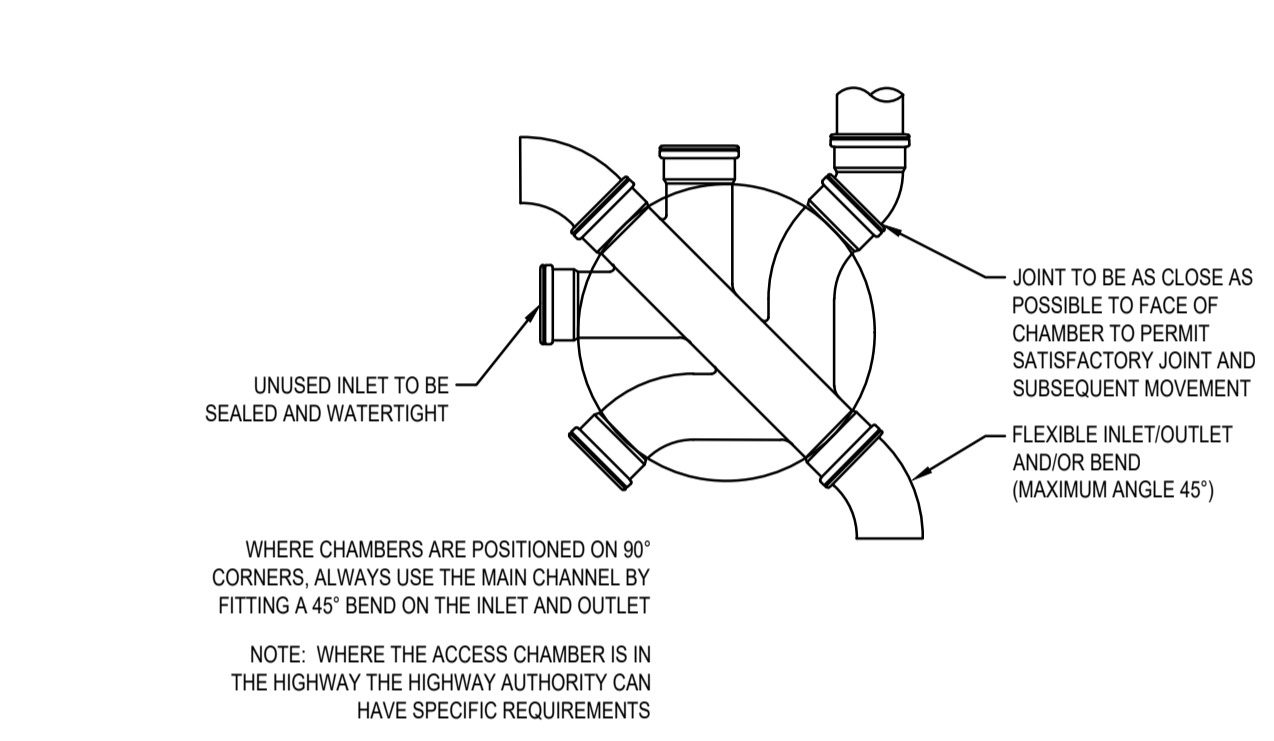
TYPICAL INSPECTION CHAMBER - IC3  
SITED IN DOMESTIC GARDENS



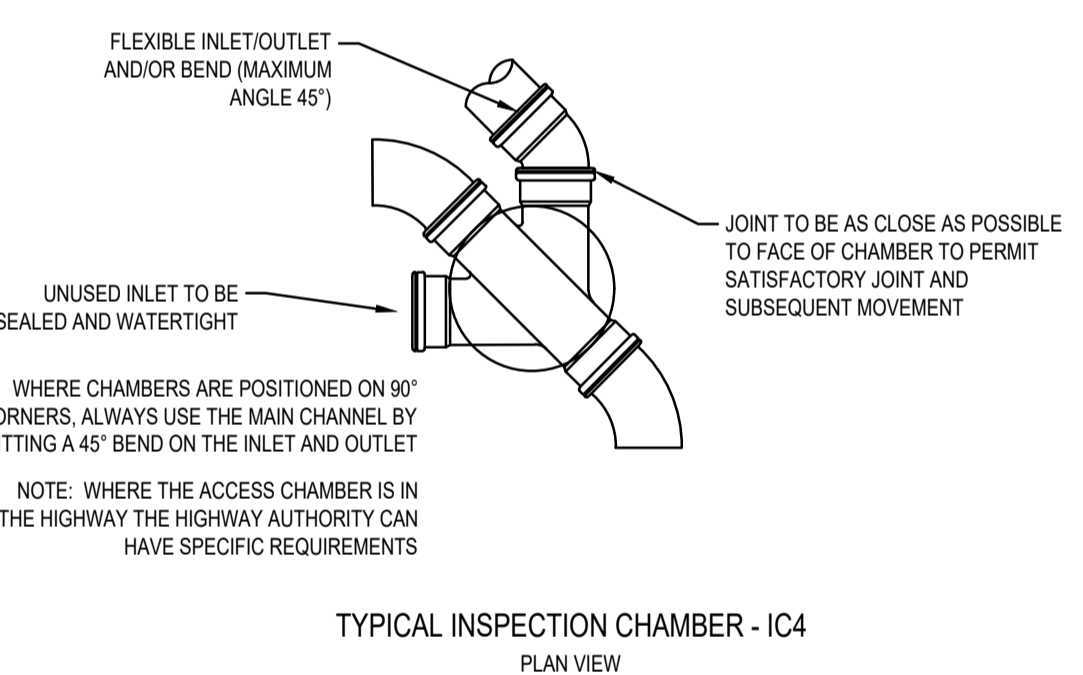
TYPICAL INSPECTION CHAMBER - IC3  
SITED IN AREAS SUBJECT TO VEHICLE LOADING



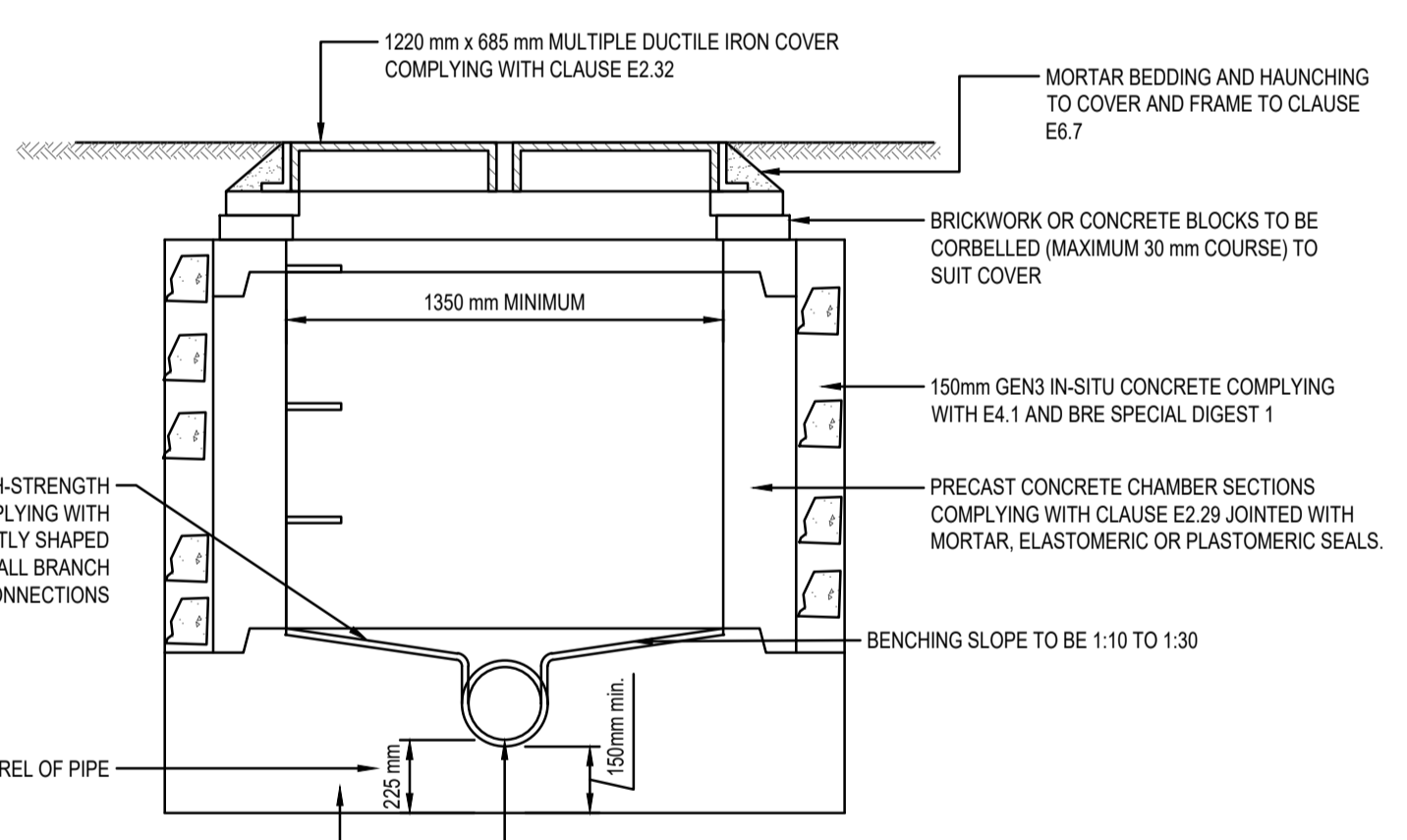
TYPICAL INSPECTION CHAMBER - IC4  
SITED IN DOMESTIC GARDENS (MAX DEPTH TO INVERT 600mm)



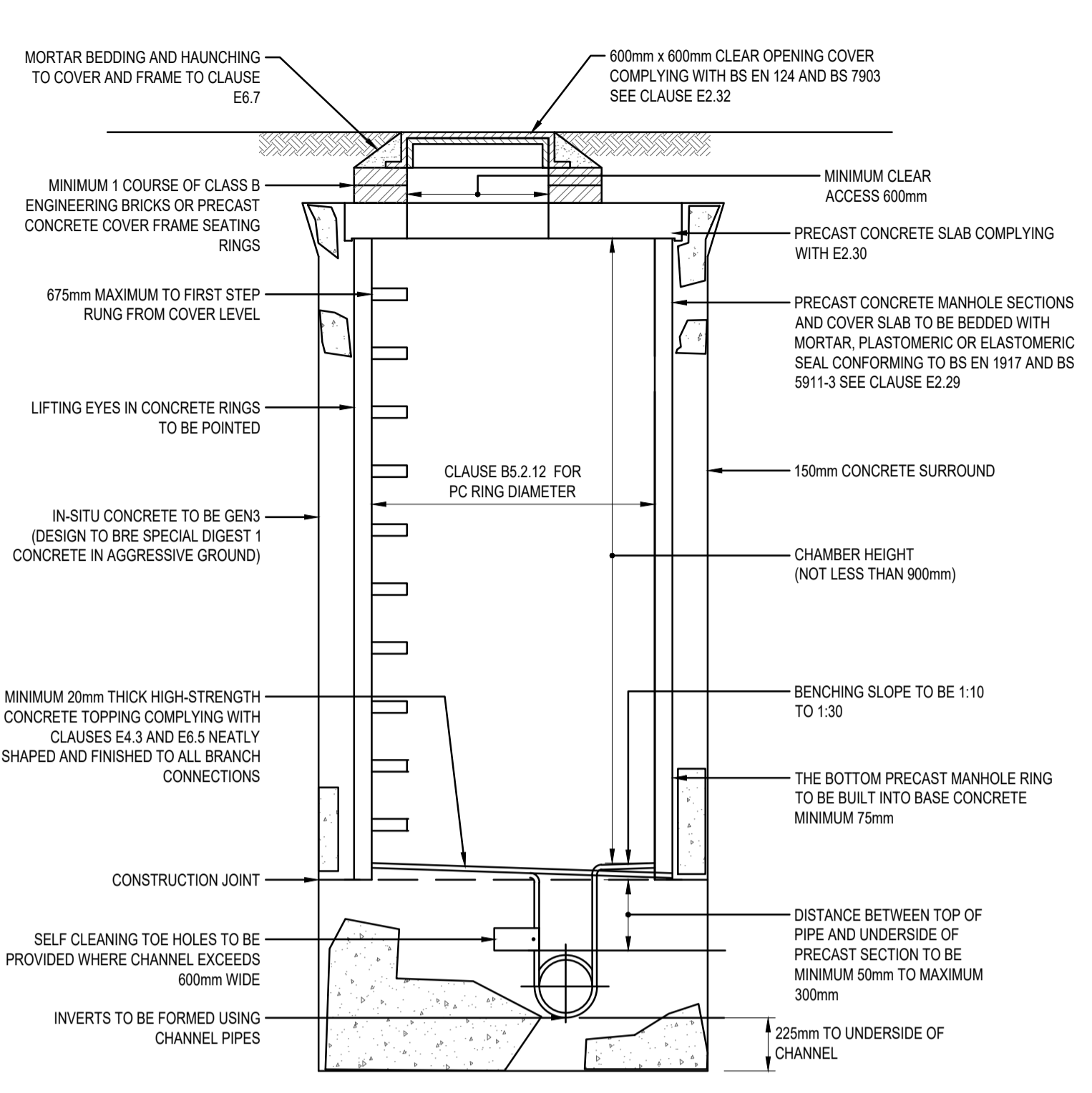
TYPICAL INSPECTION CHAMBER - IC3  
PLAN VIEW



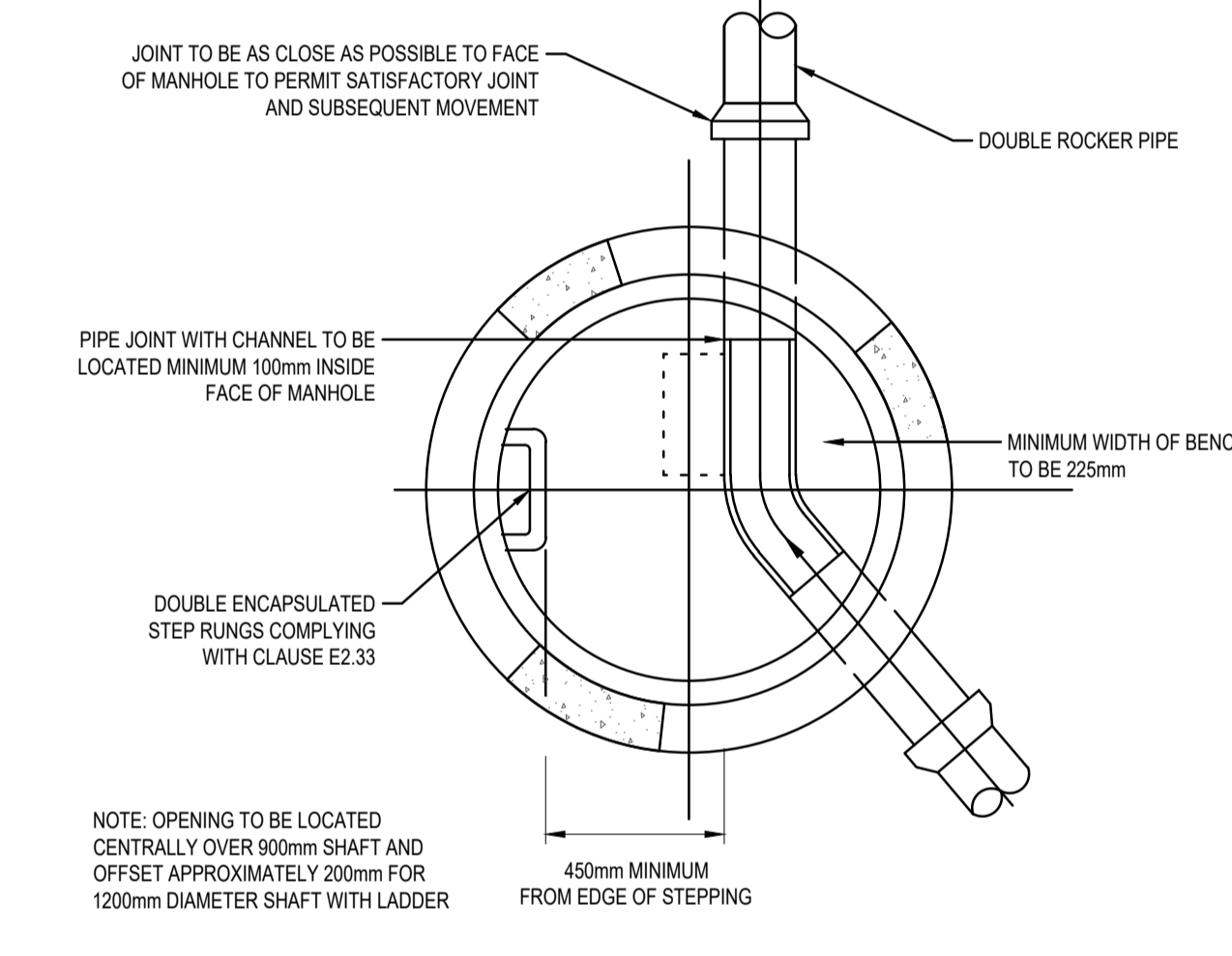
TYPICAL INSPECTION CHAMBER - IC4  
PLAN VIEW



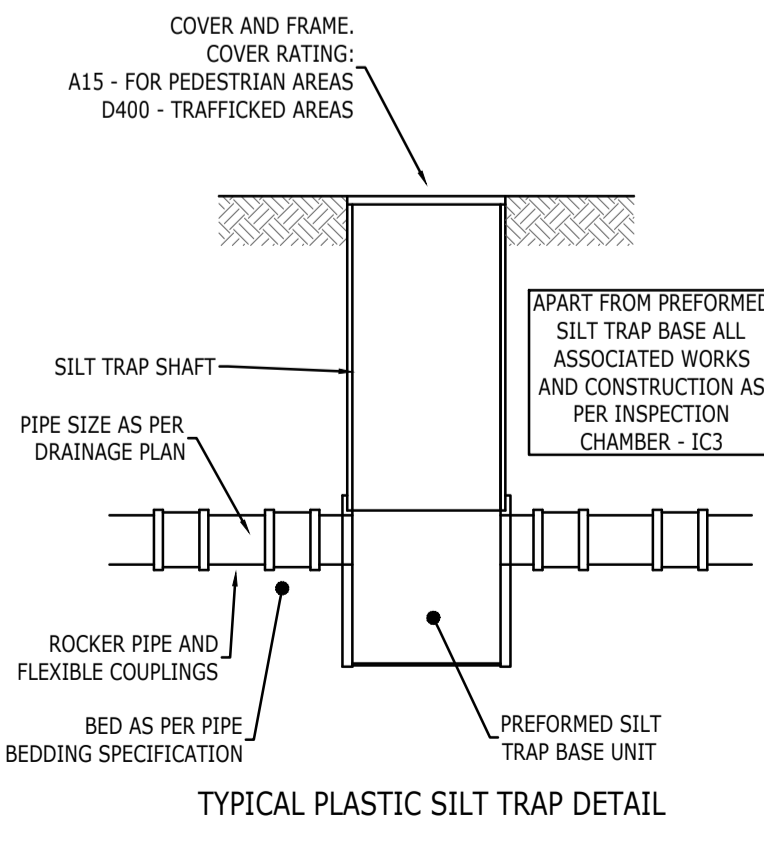
TYPICAL PRE-CAST CONCRETE (PCC) RINGS  
CONCRETE MANHOLE - TYPE C  
DEPTH FROM COVER LEVEL TO SOFFIT OF PIPE LESS THAN 1.5m



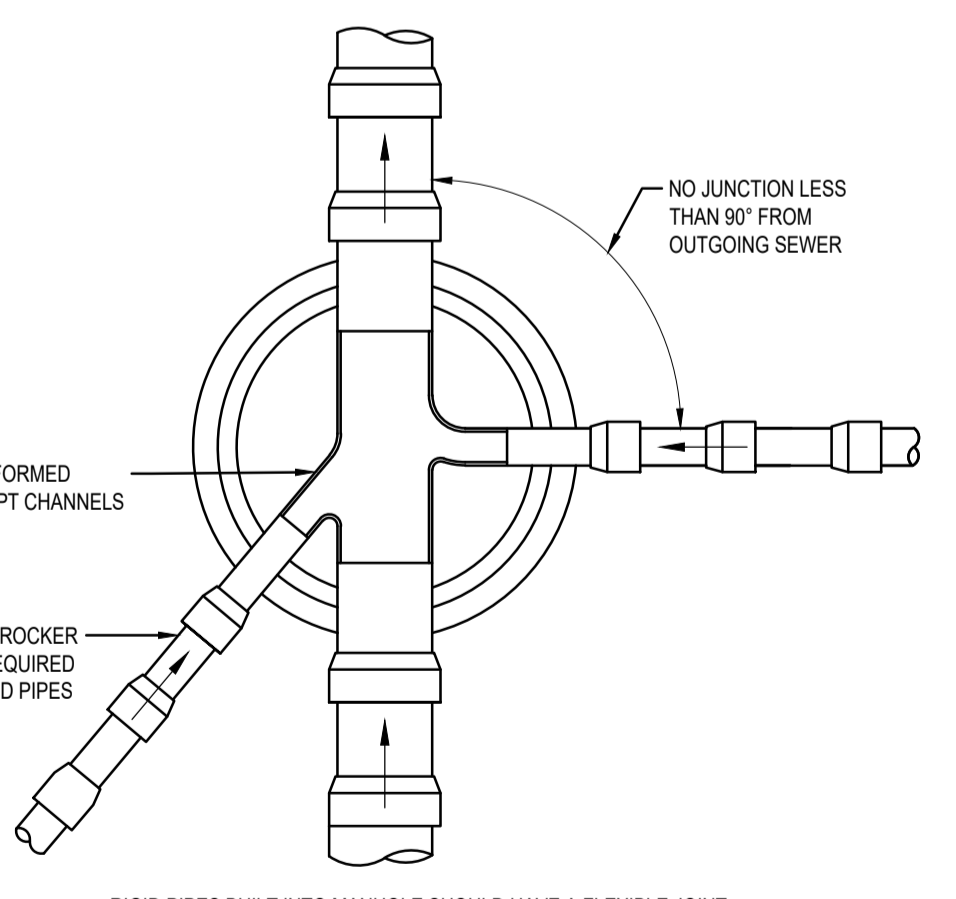
TYPICAL PRE-CAST CONCRETE (PCC) RINGS  
MANHOLE - TYPE B  
DEPTH FROM COVER LEVEL TO SOFFIT OF PIPE 1.5m TO 3m



TYPICAL PCC RINGS SILTRAP DETAIL



TYPICAL PLASTIC SILTRAP DETAIL



NOMINAL DIAMETER (mm)	MAXIMUM EFFECTIVE LENGTH (m)
150 - 600	0.6
601 - 750	1.00
OVER 750	1.25

ALL PIPES ENTERING THE BOTTOM OF THE MANHOLE TO HAVE SOFFITS LEVEL

TYPICAL ARRANGEMENT OF PIPE JUNCTIONS WITHIN  
MANHOLES

NOTES

- THIS DRAWING IS FOR PLANNING PURPOSES ONLY AND IS TO BE READ IN CONJUNCTION WITH ALL OTHER RELATED DRAWINGS AND SPECIFICATIONS ISSUED BY THE ARCHITECT, ENGINEER, REDROW SPECIFICATIONS AND NHBC STANDARDS.
- IF THERE IS ANY AMBIGUITY BETWEEN THE SPECIFICATION AND THE DRAWINGS OR ANY OTHER DISCREPANCIES ARE FOUND THESE SHOULD BE REPORTED TO THE ENGINEER AND/OR CLIENT IMMEDIATELY SO THAT CLARIFICATION CAN BE SOUGHT PRIOR TO THE COMMENCEMENT OF WORK.
- ANY SOFT SPOTS TO BE REMOVED AND REPLACED WITH TYPE 1 MATERIAL OR ENGINEER APPROVED MATERIAL.
- DIMENSIONS ARE IN MILLIMETRES UNLESS NOTED OTHERWISE.
- WHERE GROUND CONDITIONS DICTATE CONCRETE TO BE SULPHATE RESISTANT.
- ALL PIPES ENTERING INSPECTION CHAMBER / MANHOLE OR OTHER STRUCTURE TO INCORPORATE ROCKER PIPES MIN. 600mm LONG AND FLEXIBLE JOINTS.
- PIPE LAYING IN MADE / SOFT GROUND WHERE THE TRENCH FORMATION HAS LITTLE BEARING STRENGTH AND THEREFORE WILL NOT SUPPORT PIPE BEDDING MATERIAL EFFECTIVELY, IT IS NECESSARY TO PROVIDE A STABLE FORMATION BEFORE PIPE LAYING. SUCH CONDITIONS MOST COMMONLY OCCUR IN PEAT, SILTY GROUND, SOFT TO VERY ALLUVIAL CLAYS, RUNNING SAND OR IN ARTIFICIALLY FILLED GROUND. THE TRENCH FORMATIONS AND MANHOLE BASE SHOULD BE OVER-EXCAVATED BY 600-800MM, DEPENDING ON THE BEARING STRENGTH OF THE GROUND. GRAVEL REJECT MATERIAL OR SMALL HARDWARE, LESS THAN 75MM, IS THEN COMPACTED IN LAYERS TO FORM A FIRM TRENCH BOTTOM. A 50MM THICKNESS OF LEAN-MIX CONCRETE IS THEN PLACED AS BINDING. THE PIPE IS THEN LAID ON GRANULAR BEDDING MATERIAL. THE PIPE BEDDING CONSTRUCTION REQUIREMENTS ARE CALCULATED IN THE NORMAL WAY, BUT IT IS IMPORTANT THAT 'WIDE TRENCH' DESIGN CRITERIA ARE USED BECAUSE 'NARROW TRENCH' CONDITIONS CANNOT BE GUARANTEED IN THIS SITUATION.

NOT FOR CONSTRUCTION - SUBJECT TO APPROVAL

Rev	Amendments	Drn	Chk	App	Date
<p>Unit 1 Puckall Farm Somes Lane Branford Wimsey SO31 9JZ</p> <p>Telephone: 01794 537990 Fax: 01566 331344 E: info@odysseyconsult.co.uk W: www.odysseyconsult.co.uk</p>					
Job Title					
<p><b>BILSHAM ROAD YAPTON</b></p>					
Drawing Title					
<p><b>PRELIMINARY DRAINAGE CONSTRUCTION DETAILS - SHEET 1</b></p>					
Client					
<p><b>REDROW</b></p>					
Scale	Date	Designed			
N.T.S. @ A1	APR 25	AK			
Drawn	Checked	Approved			
AK	LG	BAC			
Job No	Drawing No	Rev			
24-217	24-217-253	-			