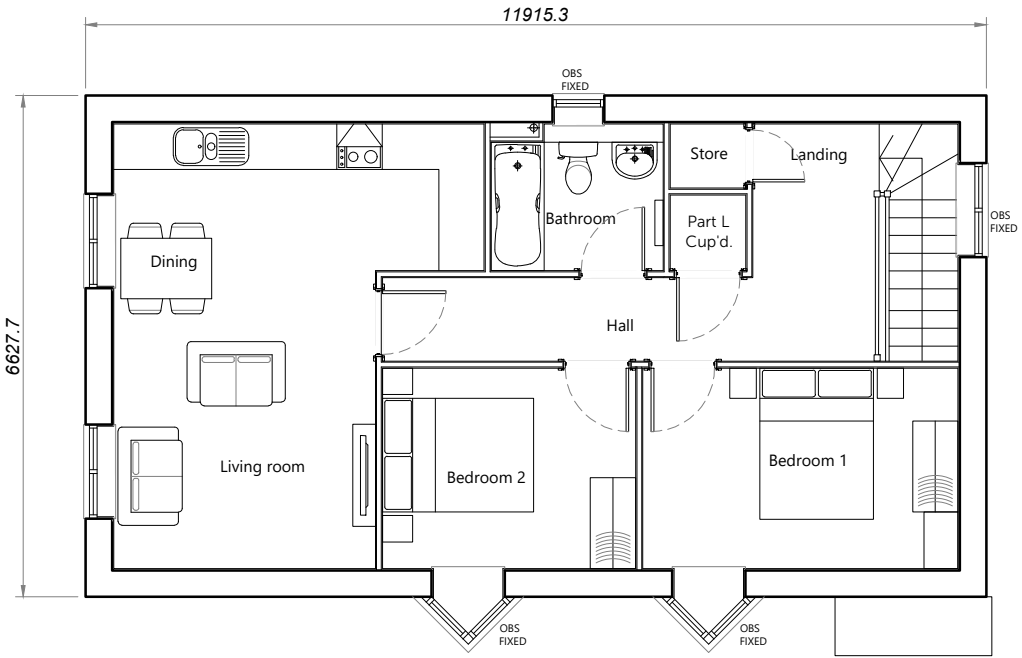


Ground Floor Plan



First Floor Plan

House Type	A	Variation	Option	PLOT No. As Drawn - 12 Handed -
Bedrooms	2	Persons 3		
Sq.ft	747	Sq.m 69.4		



Rev	Description	Date	Au	Ch
A	Planning Issue	08.11.24	CH	
B	Bathroom and kitchen arrangement amended. Ground floor updated to show fneicing to match layout, and door access handed. Notes to windows in Dining and Living omitted. Window added to stairwell, Part L cupboard shown. Roof lights omitted. Radiators shown. Bedroom layouts updated. Corner store omitted.	31.01.25	CMI	
C	Ground floor store re-labeled Laundry.	10.02.25	CMI	
D	Window form to bedroom 1 and 2 amended. Window omitted from front elevation serving living room.	25.03.25	CMI	

Project	Land West of Pagham Road		
Drawing	House Type A Floor Plans		
Client	Bargate Homes		
Job no.	BARG230419	Date	10.09.24
Dwg no.	HT.A.p	Rev.	D
Author	CJB	Checker	Scale 1:100 at A3
Status	PLANNING		Office Romsey
Client ref.			

