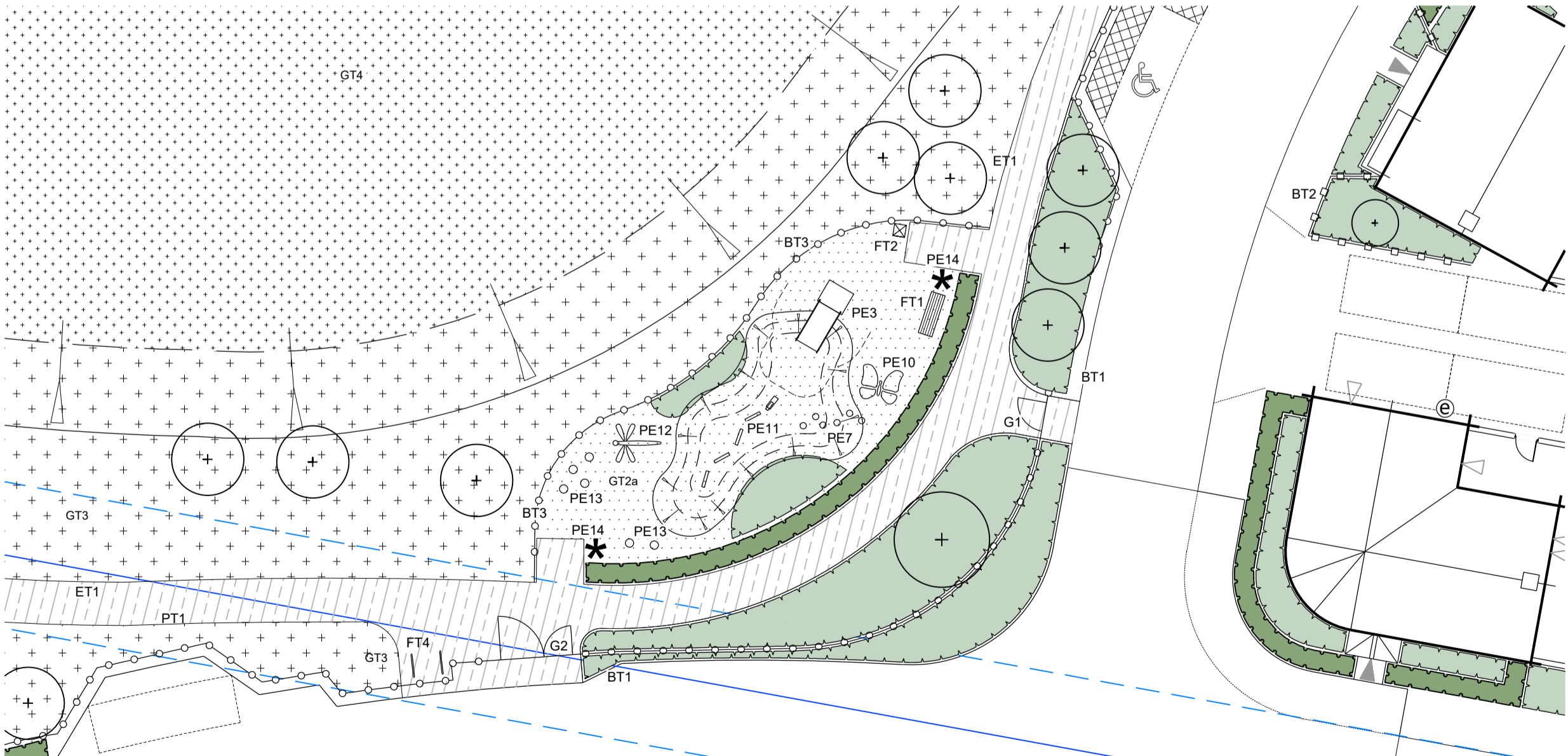




1 Inset 1 - Play Space Within Entrance POS Scale: 1:200



1 Inset 2 - Magic Pond Toddler Play Area Within Western POS Scale: 1:200

This drawing was created by Fabrik Limited for the use of the Client. It is the property of Fabrik Limited and shall remain the property of Fabrik Limited. No part of this drawing may be reproduced, stored in a retrieval system, or transmitted in any form or by any means, electronic, mechanical, photocopying, recording, or by any information storage or retrieval system, without the prior written permission of Fabrik Limited. All rights reserved. © Fabrik Limited 2024. All rights reserved. © Fabrik Limited 2024. All rights reserved. © Fabrik Limited 2024.

PL03	26.02.2025	Amended to address LPA Officer comments	sw	sg
PL02	30.10.2024	Minor amendments to address Client comments	sw	sg
PL01	24.10.2024	Issued for planning	sw	sg
PL01	03.10.2024	Draft issue for coordination and client review	sw	sg
Revised Date			Drawn	Checked

Disclaimer:
1. This drawing is copyright of Fabrik Ltd. It must not be copied or reproduced without written consent from the owner.
2. Do not scale from this drawing. Only stated dimensions are to be taken from this drawing.
3. The drawing is for planning purposes only. It is not to be used for construction or for any other purpose without the written consent of Fabrik Ltd.
4. This drawing uses coloured lines. Please do not rely on a monochrome copy.

External References:

LEGEND

HARD LANDSCAPE

PAVING TYPE

PT2 Paving Type 2 - Safety Surfacing
Product: Resin bound mulch

EDGING TYPES

ET2 Edging Type 2 - Steel
Size/Colour: 3mm / Galvanised

BOUNDARY TYPES

BT1 Boundary Type 1 - Cleft Chestnut Post and Rail Fence
Product: Treated softwood post and 3 horizontal bar fencing
Height: 1200mm high

BT3 Boundary Type 3 - Timber Knee-rail
Product: Treated softwood post and horizontal bar fencing
Height: 450mm high

G1 Gate 1 - Self Closing Timber Pedestrian Gate
To match BT1

FURNITURE

FT1 Furniture Type 1 - Timber Seat with Backrest
Size: 2000mm(l) x 340mm(d) x 450mm(h)

FT4 Furniture Type 4 - Cycle Stand
Size/Colour: 1000mm (l) x 825mm (h) x 60mm (d) / Mild steel
brushed satin finish

SOFT LANDSCAPE

EXISTING TREES & VEGETATION

Existing Trees to be Retained
To be protected in accordance with BS 5837:2012 'Trees in relation to Design, Demolition and Construction'

Existing Vegetation to be retained
Existing vegetation to be cut back away from roads/pathways as appropriate to allow clear routes through the site

NOTE: Refer to FPCR arboricultural survey & report for details

Note: No dig construction to be carried out in any location where construction is within RPA of existing trees. Refer to Arboriculturalist's drawings & reports for further details

PROPOSED PLANTING

Proposed Tree Planting
Size/Spec: Refer to plant schedule for details
Note: Final location of trees to be determined with services alignment. Fruit trees to be sourced from local suppliers, such as Southern Fruit Trees (www.southernfruittrees.co.uk), Blackmoor (www.blackmoor.co.uk) or similar and approved.

Proposed Shrub Planting
Product: Container grown plant stock
Size/Spec: Refer to plant schedule for details

Proposed Single Species Hedge Planting
Product: Container grown plant stock
Size/Spec: Refer to plant schedule for details

Grass Type 1 - Proposed Turf
Product: WFT-Species-Rich-26 Species Rich Lawn Turf
Supplier: Wildflower Turf or similar approved

Grass Type 2a - Close-mown Amenity Grass
Product: WFG20 Eco Species Rich Lawn Mixture
Supplier: Germinial Seeds or similar approved

Grass Type 2b - Long Sward Amenity Grass
Product: WFG20 Eco Species Rich Lawn Mixture
Supplier: Germinial Seeds or similar approved

OTHER

Application Boundary

Banking within soft landscape
Indicative to indicate levels change.

Spot height

Existing Rising Main with 6m Easement

Notes on drawings

- Installation of play equipment and safety surfacing to be in accordance with Manufacturer's guidelines and all relevant British Safety Standards, including BS EN 1176, BS EN 1177 and BS EN 7188.
- Refer to engineers and specialist drawings and details for lighting, drainage, underground services.
- Final tree location to be fully coordinated with lighting layout, underground service runs and site drainage.
- Extent of permeable paving to be confirmed by engineer's design.
- Levels information for the areas of open space in relation to the built form FFL's and retaining walls are to be read in conjunction with Engineer's proposed levels, boundary treatments to be coordinated with Landscape Architects and Engineers Site layout plans.
- Slope profiles to the open space areas are to be as slack as possible considering access for all.

PLAY EQUIPMENT

ENTRANCE POS

PE1 Inclusive Roundabout
Eibe 5640090 or equal and approved



PE6 Log Cabin
Eibe 54514006300 or equal and approved



PE2 Timber Play Unit Maureen
Eibe 52514303100
To be supplied with stainless steel slide; or equal and approved



PE7 Balance Step 40
Eibe 5553105 or equal and approved



PE3 Embankment Slide
Eibe 54031412100 or equal and approved.
To be installed with platform



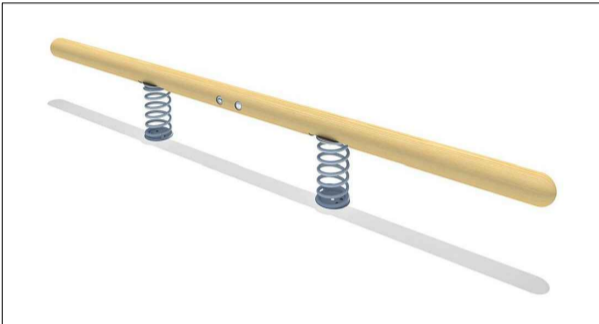
PE8 Balance Quick Step
Eibe 5553045 or equal and approved



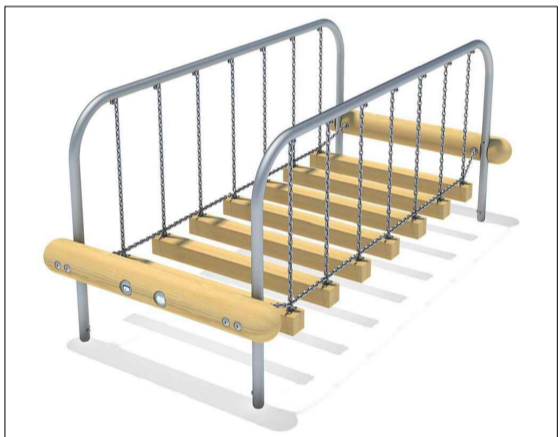
PE4 Timber Nest Seat Swing
Eibe 57140906300 or equal and approved



PE9 Balance Trainer Disco Fox
Eibe 55530603100 or equal and approved



PE5 Balance Wobbly Bridge
Eibe 55531303100 or equal and approved



MAGIC POND TODDLER PLAY SPACE

PE3 Embankment Slide
Eibe 54031412100 or equal and approved.
To be installed with platform



PE11 Timber Sea Monster Carving
Handmade Places BX/HMP 350004 or equal and approved



PE14 Timber Totem
Handmade Places BX/HMP 350004 or equal and approved. Potential to construct from site won timber.



PE7 Balance Step 40
Eibe 5553105 or equal and approved



PE12 Timber Dragonfly Carving
Handmade Places BX/HMP 350007 or equal and approved



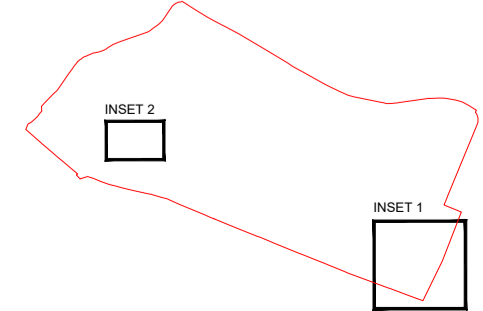
PE10 Timber Butterfly Carving
Handmade Places BX/HMP 350003 or equal and approved



PE13 Timber Engraved Circle Seats
Outdoor Play or equal and approved



Location Plan



fabrik

Project: Land West of Pagham Road, Pagham
Drawing Title: Play Area Proposals
Purpose of Issue: Issued for Planning Approval

Drawn By: SW
Checked By: sg
Drawn Scale: 1:200 @ A1
Date of First Issue: ocl 2024

Drawing Number: D3322-FAB-00-XX-DR-L-2000

Revision: PL03