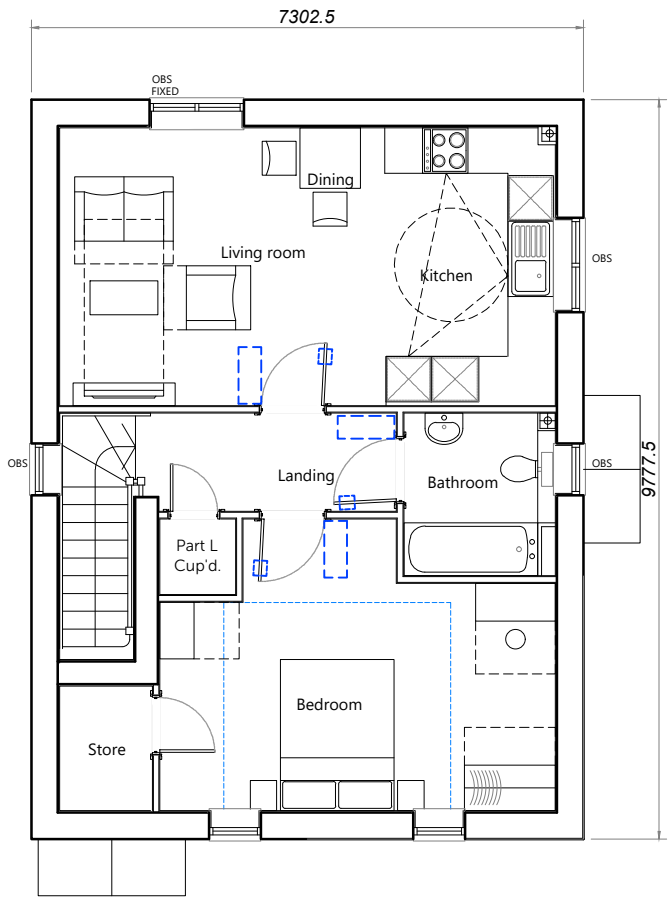


Ground Floor Plan



First Floor Plan

House Type	1M	Variation	Option	House Type	1M	Variation	Option	PLOT No. As Drawn - Handed - 33-34, 76-77
Bedrooms	1	Persons	2	Bedrooms	1	Persons	2	
Sq.ft finish	570	Sq.m finish	52.96	Sq.ft finish	669	Sq.m finish	62.18	
Sq.ft structural	578	Sq.m structural	53.74	Sq.ft structural	679	Sq.m structural	63.12	

