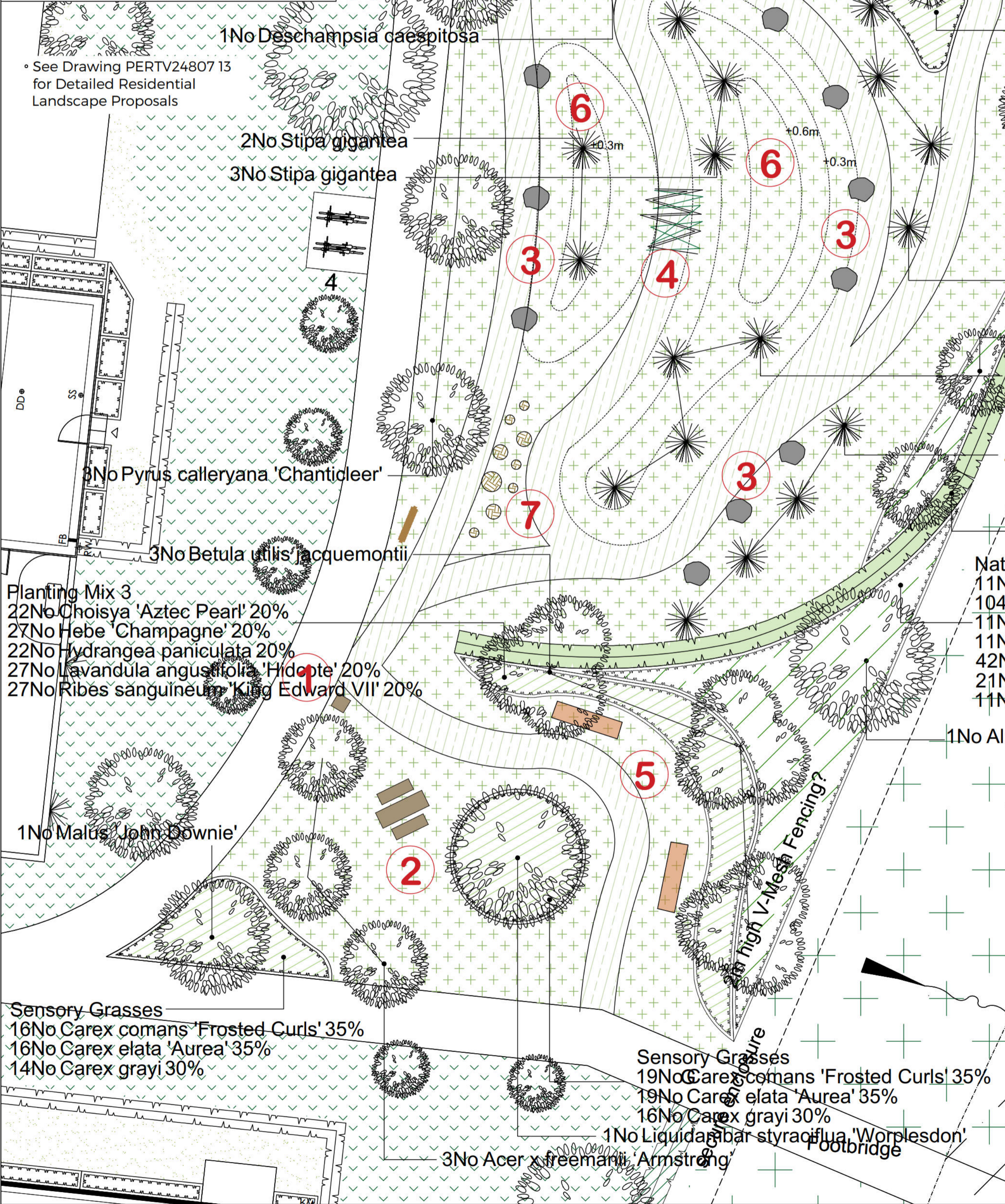


See Drawing PERTV24807 13 for Detailed Residential Landscape Proposals



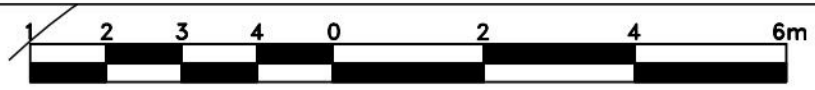
Planting Schedule					
Tree Name	Birth	Height	Density	Specification	No
Carpinus betulus	18-19cm	100cm	0.3/1 Double Staggered at 0.4m offset	Transplant Bushy BR	447
Malus John Downie	18-19cm	100-150cm	Counted	Extra Heavy Standard Clear Stem min. 200 RB	-
Acer x freemanii 'Armstrong'	14-16cm	100-150cm	Counted	Extra Heavy Standard 5 brks 3x Clear Stem 150-175 RB	-
Prunus avium Plena	14-16cm	100-150cm	Counted	Extra Heavy Standard 5 brks 3x Clear Stem 175-200 RB	-
Prunus calleryana 'Chanticleer'	14-16cm	100-150cm	Counted	Extra Heavy Standard 5 brks 3x Clear Stem 175-200 RB	-
Liquidambar styraciflua 'Worplesdon'	14-16cm	100-150cm	Counted	Extra Heavy Standard 5 brks 3x Clear Stem 150-175 RB	-
Betula utilis jacquemontii	14-16cm	100-150cm	Counted	Extra Heavy Standard Multi-Stemmed 7 brks 3x RB	8
Alnus glutinosa	14-16cm	100-150cm	Counted	Semi-Mature 3x Clear Stem min. 200 RB	8

Specimen Grasses					
Species Name	Pot Size	Specification	Density	No	
Deschampsia caespitosa	Full Pot	Counted	Counted	18	
Stipa gigantea	Full Pot	Counted	Counted	18	

Sensory Grasses Mix					
Number	Species	Specification	Density	Percentage Contribution	
103	Carex comans 'Frosted Curls'	Full Pot	3/m ²	35%	
104	Carex elata 'Aurea'	Full Pot	3/m ²	35%	
88	Carex grayi	Full Pot	3/m ²	30%	
Total 294					

Native Scrub Mix					
Number	Species	Specification	Density	Percentage Contribution	
29	Cornus sanguinea	Branched BR	4/m ²	5%	
29	Corylus avellana	Branched BR 3/5 brks 4/m ²	4/m ²	5%	
242	Crataegus monogyna	Transplant BR	4/m ²	50%	
242	Ilex aquifolium	Bushy	4/m ²	5%	
88	Prunus spinosa	1+1 Branched BR	4/m ²	20%	
49	Rosa canina	Branched BR 3/5 brks 4/m ²	4/m ²	10%	
29	Viburnum opulus	Branched BR	4/m ²	5%	
Total 489					

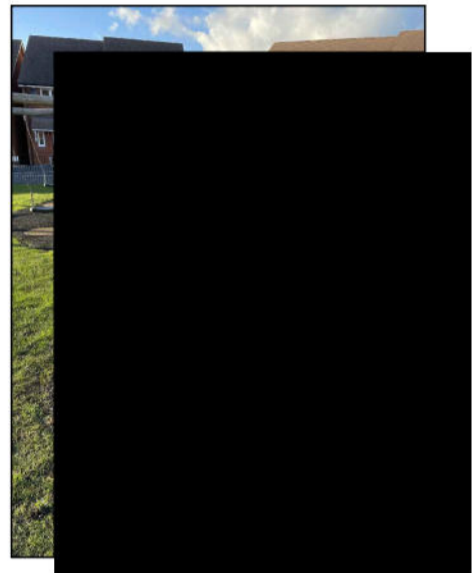
Planting Mix 3					
Number	Species	Specification	Density	Percentage Contribution	
22	Choisya 'Aztec Pearl'	Bushy C	4/m ²	20%	
22	Hebe 'Champagne'	Bushy C	4/m ²	20%	
22	Hydrangea paniculata	Bushy C	4/m ²	20%	
27	Lavandula angustifolia 'Hidcote'	Bushy C	5/m ²	20%	
27	Ribes sanguineum 'King Edward VII'	Bushy C	5/m ²	20%	
Total 125					



1 Okehampton Redwood Litter Bin from Broxap or similar and approved. Ref: BX17 4030.



2 Cotswold Inclusive 8 Seater Wheelchair Friendly Picnic Bench from Kingfisher Direct or similar and approved. Ref: SKU



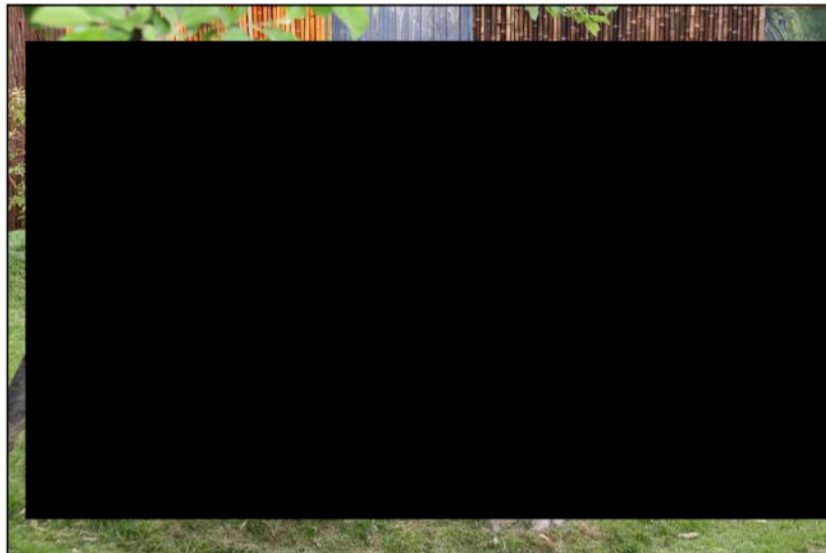
3 Recumbant Play Boulders from Playdale or similar and approved. Ref: NATURAL 1 (Age range 6 to 12).



4 Proposed Willow Planted Tunnel from The Willow Bank or similar and approved (Age range 2 to 14).



5 Litchard Timber Seat from Broxap or similar and approved. Ref: BX17 4071/S.



6 Proposed Natural Grassed Play Mounds



7 Timber Stepping Posts from Jupiter play or similar and approved. Ref: 906110300R (Age range 5 to 12).

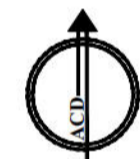


8 Timber Natural Play & Informal Seating Softwood Tree Trunks from Playdale or similar and approved. Ref: NATURAL 2 (Age range 6 to 12)

SPECIFICATION
All works generally, to comply with the written Soft Landscape Specification.

NOTES:
NOT FOR CONSTRUCTION, FOR PLANNING PURPOSES ONLY

- Legend
- Proposed tree planting within soft landscape
 - Proposed multi stem tree within soft landscape
 - Proposed specimen shrub planting
 - Proposed shrub planting to receive 75mm bark mulch after planting operations
 - Proposed multi stem tree planting to be planted in groups of 5-7no. of each species and as above
 - Proposed native scrub mix planting to be planted in groups of 5-7no. of each species and as above
 - Proposed grassed play area, to be seeded with A24 Weir and Tear grass seed mix as supplied by Geminal Seeds and sown at 50 grams per m², or similar and approved
 - Proposed mown grass paths, to be seeded with A24 Weir and Tear grass seed mix as supplied by Geminal Seeds and sown at 50 grams per m², or similar and approved
 - Proposed hedge planting to be planted in a double staggered row 300mm apart and at 500mm centres in each row. To be maintained at 1m height.
 - Proposed aluminium entrance sign 1200x600mm from Jupiter Play or similar and approved. The sign to indicate the following:
 - the area is solely for use by children
 - adults are not allowed unless accompanied by children
 - dogs are excluded
 - name and telephone number of the operator of the facility to report any incident or damage to the play equipment
 - Proposed indicative location of play and soil mounds.
 - Proposed indicative location of play boulders. From Playdale or similar and approved.



Rev Date Details Drawn



HEAD OFFICE
Rodbourn Rail Business Centre, Grange Lane,
Malmesbury, SN16 0ES
Tel: 01666 825646

4 & 5 The Old Mill, Fry's Yard, Bridge Street,
Codrington, GU7 1HP
Tel: 01483 425714

Suite 6, Crescent House, Yonge Close,
Eastleigh, SO50 9SX
Tel: 02382 026300

email: mail@acdenv.co.uk
www.acdenv.co.uk



scheme: Hampton Park
Littlehampton
client: Persimmon Thames Valley
drawing: Play Area LAP 4
date: November 2025
scale: 1:100@A1 Sheet 1
drawing no: PERTV24807 26
drawn: RH checked: DKM

Copyright of ACD Environmental Ltd. All rights reserved in Chapter IV of the Copyright, Designs and Patents Act 1988 have been generally asserted. 2011. Copyright of this plan remains with ACD until all fees have been paid in full.