

studio gb

# TODDINGTON LANE

Landscape Statement

September 2024

# studio gb

4 Elm Grove, London, SE15 5DB



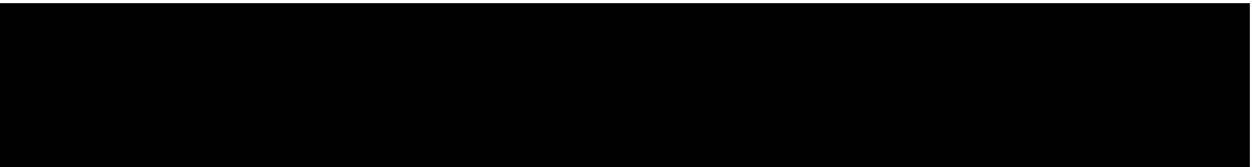
studiogb ltd  
Registered in England & Wales 14306477  
Landscape Institute Registered Practice  
00050159

All drawings, images and photographs contained within this document are presented for information purposes. Studio gb retains all Intellectual Property Rights and copyright associated with its work. Further publication or use of images will require copyright usage approval and a licence for any third-party images. Contact studio gb for further information.

This publication and its contents are  
© studio gb Ltd 2023, all rights reserved.

Rev	Date	Purpose	Document Ref	Comments
PL01	05/09/2024	Planning	134 920	

Prepared by:



Vladimir Guculak  
Director

Reviewed by:

Paul Bourel  
Director

## Contents

<b>1.0 Landscape Strategy</b>	
1.1 Design principles and Objectives	06
1.2 Illustrative layout	07
<b>2.0 Planting Strategy</b>	
2.1 Illustrative Proposals	10
2.2 Private Gardens	11
2.3 Tree Planting Strategy	12
2.4 Shrubs	14
<b>3.0 Drawings</b>	15





# 1 Landscape Strategy



1.0 Landscape Strategy

1.1Design Principles and Objectives

The masterplan is designed with the primary aim of increasing the soft landscaping across the site, which not only enhances the visual appeal but also significantly promotes biodiversity. By introducing a diverse range of plant species, the development will create a more resilient and ecologically rich environment.

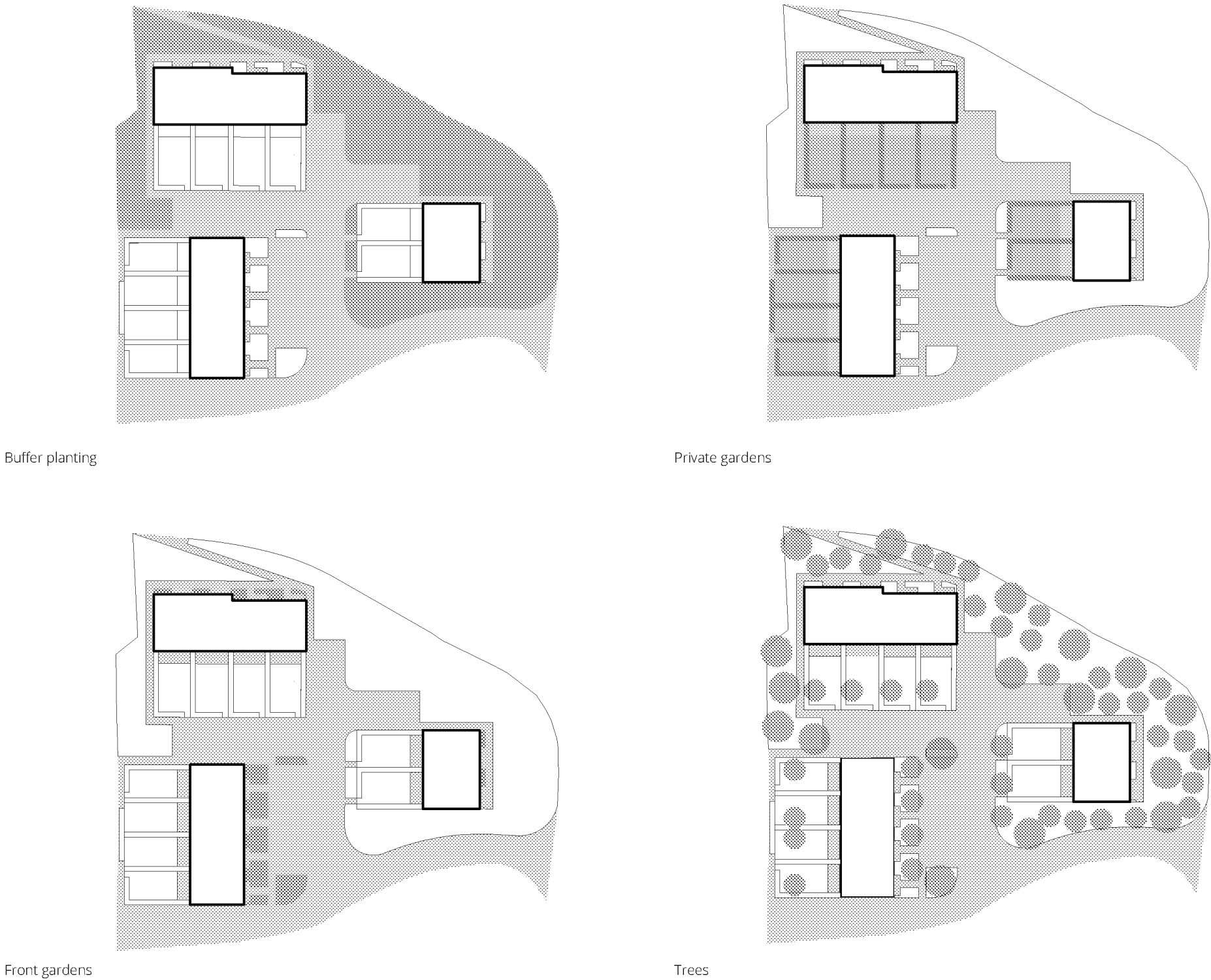
A key consideration in the design was to ensure that a sufficient planted buffer is provided to the northeast of the development. This buffer serves a dual purpose: it screens the development from the surrounding areas, preserving privacy, and it acts as a natural barrier to block noise and pollution from nearby traffic, enhancing the overall living conditions within the site.

Within the development, residents will enjoy generous private back gardens, each framed by a neatly clipped native hedge. Each house has a private terrace, offering an ideal spot for outdoor dining or leisure. Additionally, a garden shed is included in each garden, providing convenient storage for bicycles, gardening tools, or other outdoor equipment.

The front porches of the houses will be complemented by privacy shrubs planted in dedicated beds. These shrubs not only enhance the aesthetic appeal of the homes but also offer an added layer of privacy for residents, creating a welcoming and intimate entrance.

A substantial new tree planting strategy has been integrated throughout the development.

To further promote sustainability, all hard-standing surfaces within the development will be permeable. Flush kerbs will be used throughout the site to facilitate easy access, ensuring that the environment is both accessible and inclusive for all residents and visitors. Parking spaces have been thoughtfully integrated into the landscape and screened where possible.

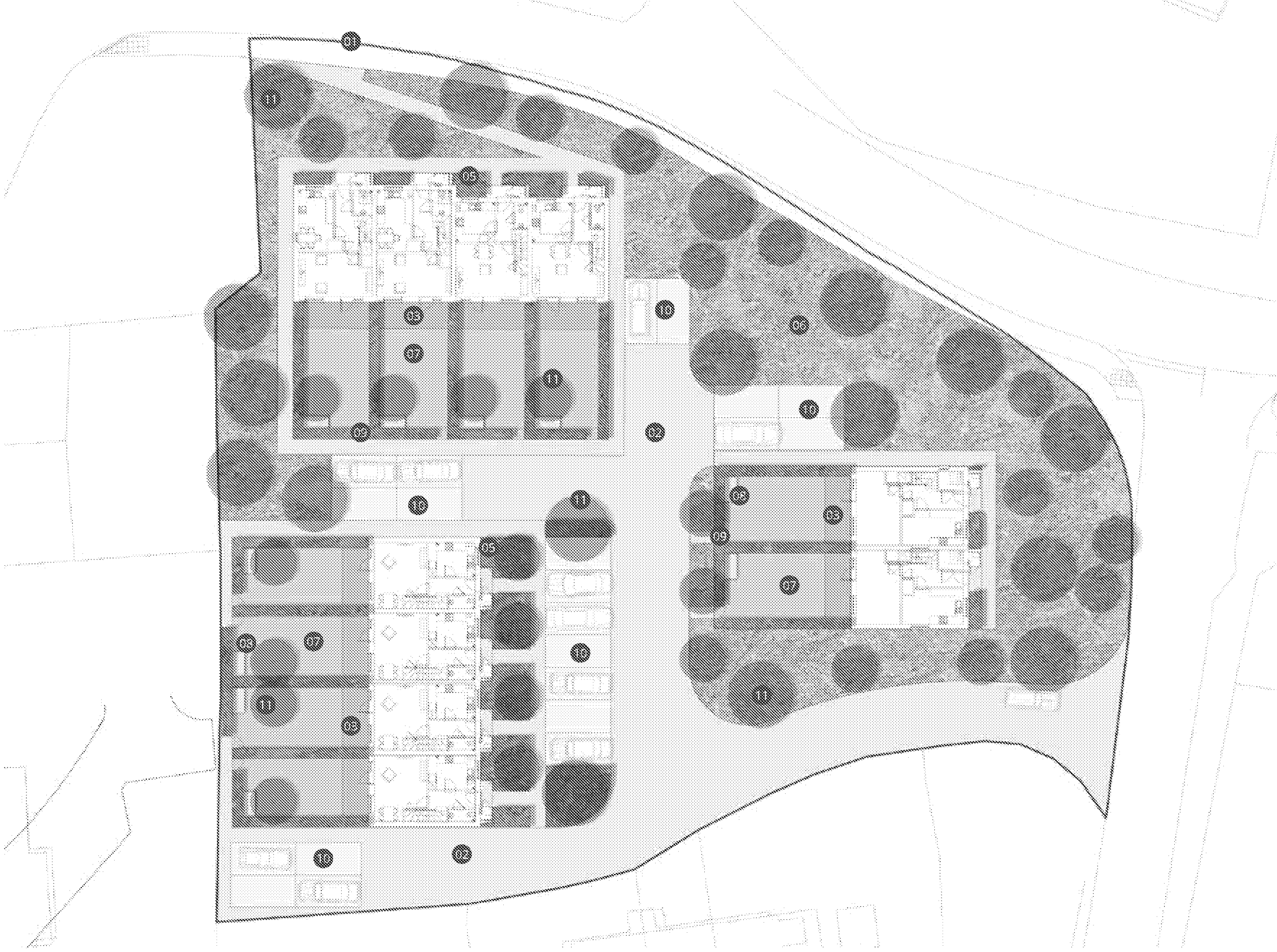


1.0 Landscape Strategy

1.2 Illustrative Layout

The masterplan features a cohesive planting strategy and a simple material palette, creating a unified and cohesive design. The layout is clear and legible, ensuring easy navigation, while nearly half of the site is dedicated to generous green spaces, promoting biodiversity and sustainability.

- Key**
- 01 Red Line Boundary
  - 02 Permeable concrete block paving
  - 03 Private terraces, concrete slabs
  - 04 Hedges
  - 05 Mixed shrubs
  - 06 Meadow
  - 07 Lawns
  - 08 Garden sheds
  - 09 Garden gates
  - 10 Parking spaces
  - 11 Proposed trees



Illustrative Landscape plan, not to scale





## 2 Planting Strategy




2.0 Planting Strategy

2.1 Illustrative Proposals

Key

 Hedges  
Instant mixed native hedges:

*Crataegus monogyna*  
*Acer campestre*  
*Corylus avellana*  
*Euonymus europaeus*  
*Cornus alba*  
*Salic caprea*


 Mixed shrubs:

*Cornus sanguinea*  
*Ligustrum vulgare*  
*Viburnum lantana*

 Lawns

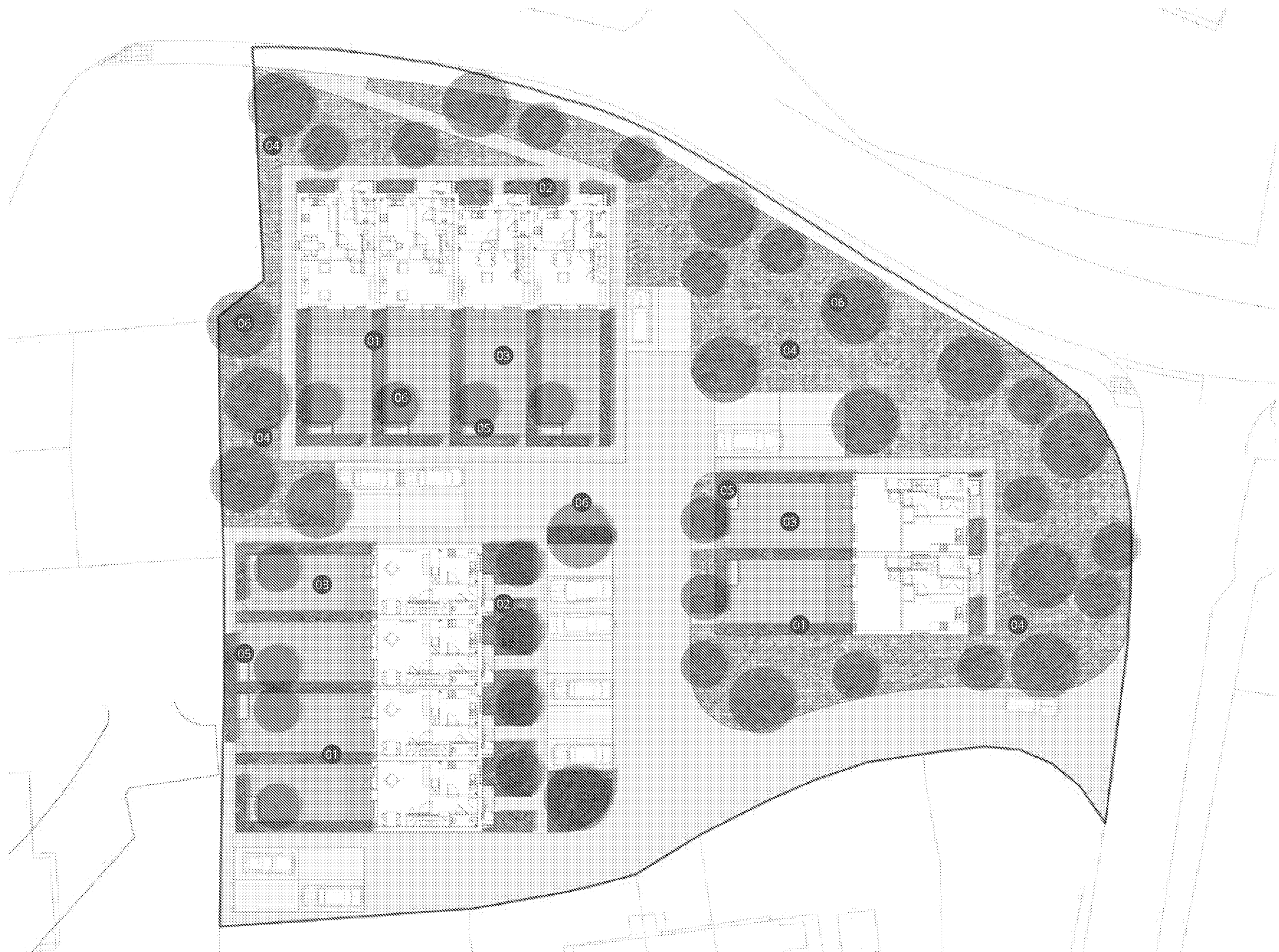
 Native meadow with shrubs:

*Viburnum opulus*  
*Sambucus nigra*  
*Rosa canina*  
*Euonymus europaeus*  
*Prunus spinosa*  
*Frangula alnus*

 Sedum roofs

 Trees

*St* - *Sorbus torminalis*  
*Sa* - *Sorbus aucuparia*  
*Pa* - *Prunus avium*  
*Pp* - *Prunus padus*  
*Fs* - *Fagus sylvatica*  
*Cb* - *Carpinus betulus*



Illustrative Landscape plan, not to scale

2.0 Planting Strategy

2.2 Private Gardens

Hedges

Mixed native deciduous hedges will define the boundaries of private gardens. These hedges, made from a variety of local tree and shrub species, will provide a natural and attractive border while supporting local wildlife. Their seasonal changes in color will enhance the gardens' appeal throughout the year



*Acer campestre*



*Corylus avellana*



*Euonymus europaeus*

Mixed Shrubs

Mixed native shrubs will establish a privacy buffer and a welcoming arrival area, requiring formal clipping once or twice a year to maintain their shape and health.



*Ligustrum vulgare*



*Cornus alba*



*Salic caprea*



*Crataegus monogyna*



Species rich meadow turf for private back gardens



*Cornus sanguinea*



*Viburnum lantana*



2.0 Planting Strategy

2.3 Tree Planting Strategy

The proposed landscaping plan emphasizes the use of native tree species from the UK, ensuring that the vegetation is well-suited to the local environment and contributes to the preservation of the local natural biodiversity. A total of 56 trees will be planted, thoughtfully selected to enhance the site's ecological and aesthetic value.

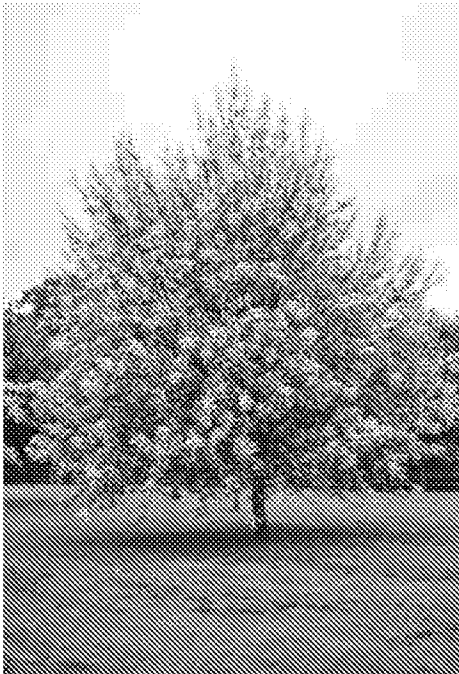
Currently, there are no existing trees on the site, providing a blank canvas for the new planting scheme. The plan includes a mix of small and large trees, strategically placed according to the available space. Smaller trees will be positioned in private gardens or close to buildings, where their size and form will complement the surrounding architecture. In areas where space permits, larger tree species will be utilized to create a more substantial presence and contribute to the site's overall canopy.

All of the trees chosen for this project are deciduous. This characteristic not only adds seasonal interest but also allows sunlight to reach the ground during the winter months, promoting the growth of understorey plants. Additionally, most of the selected trees will produce flowers and fruit, which are highly beneficial for local wildlife, supporting biodiversity by providing food sources for birds, insects, and other species.

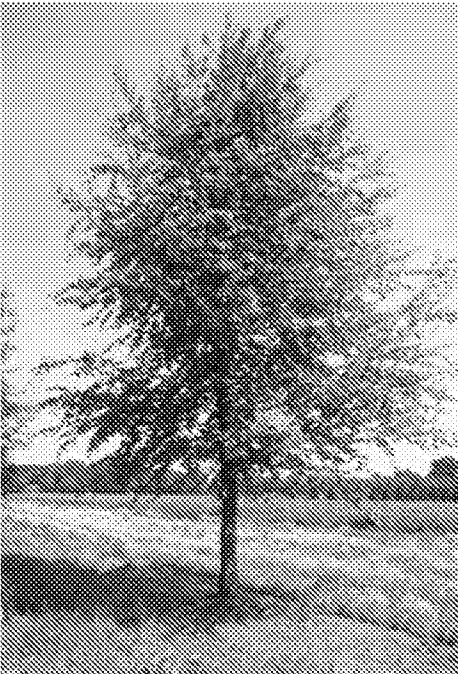
To maintain clear and unobstructed pedestrian and vehicular circulation, the trees will be planted with a 2-meter clear stem. It ensures that the lower branches of the trees do not impede movement or visibility, making the environment safer and more accessible.



*Carpinus betulus*



*Prunus padus*



*Fagus sylvatica*



*Prunus avium*



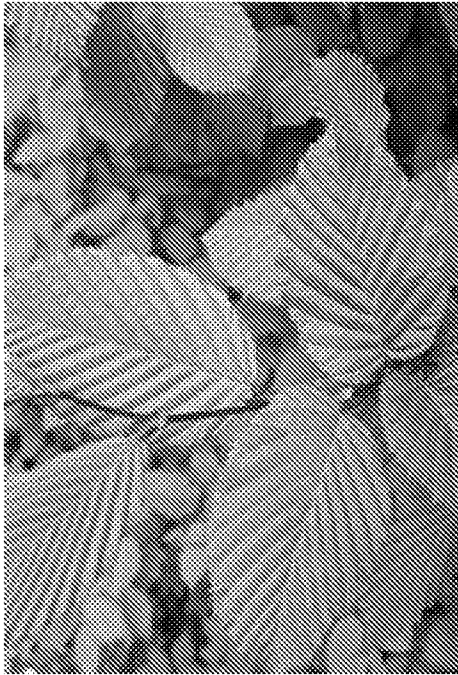
*Sorbus torminalis*



*Sorbus aucuparia*

The perimeter of the site will feature a buffer of tree planting, emerging from a native shade-tolerant meadow. This meadow will include a diverse mix of grasses and wildflower species, creating a rich habitat for wildlife.

The buffer will be further enhanced by the addition of a shrub layer, which will provide additional cover and food for various species, as well as contribute to the visual appeal and ecological complexity of the landscape.



*Carpinus betulus*



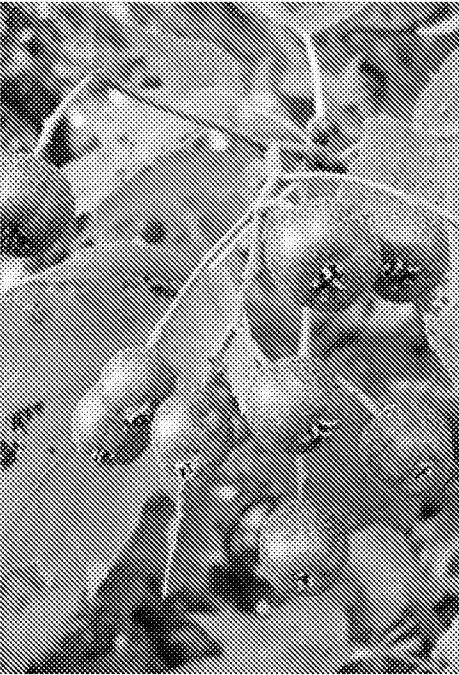
*Prunus padus*



*Fagus sylvatica*



*Prunus avium*



*Sorbus torminalis*



*Sorbus aucuparia*



Grasses and wildflowers mix

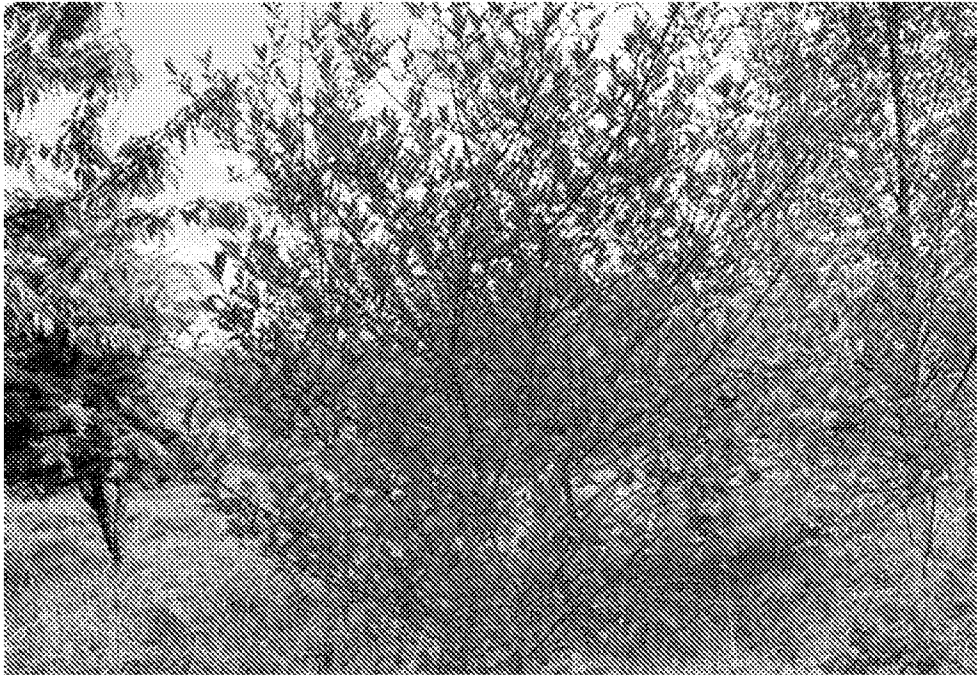


2.0 Planting Strategy

2.4 Shrubs



*Sambucus nigra*



*Euonymus europaeus*



*Frangula alnus*



*Rosa canina*



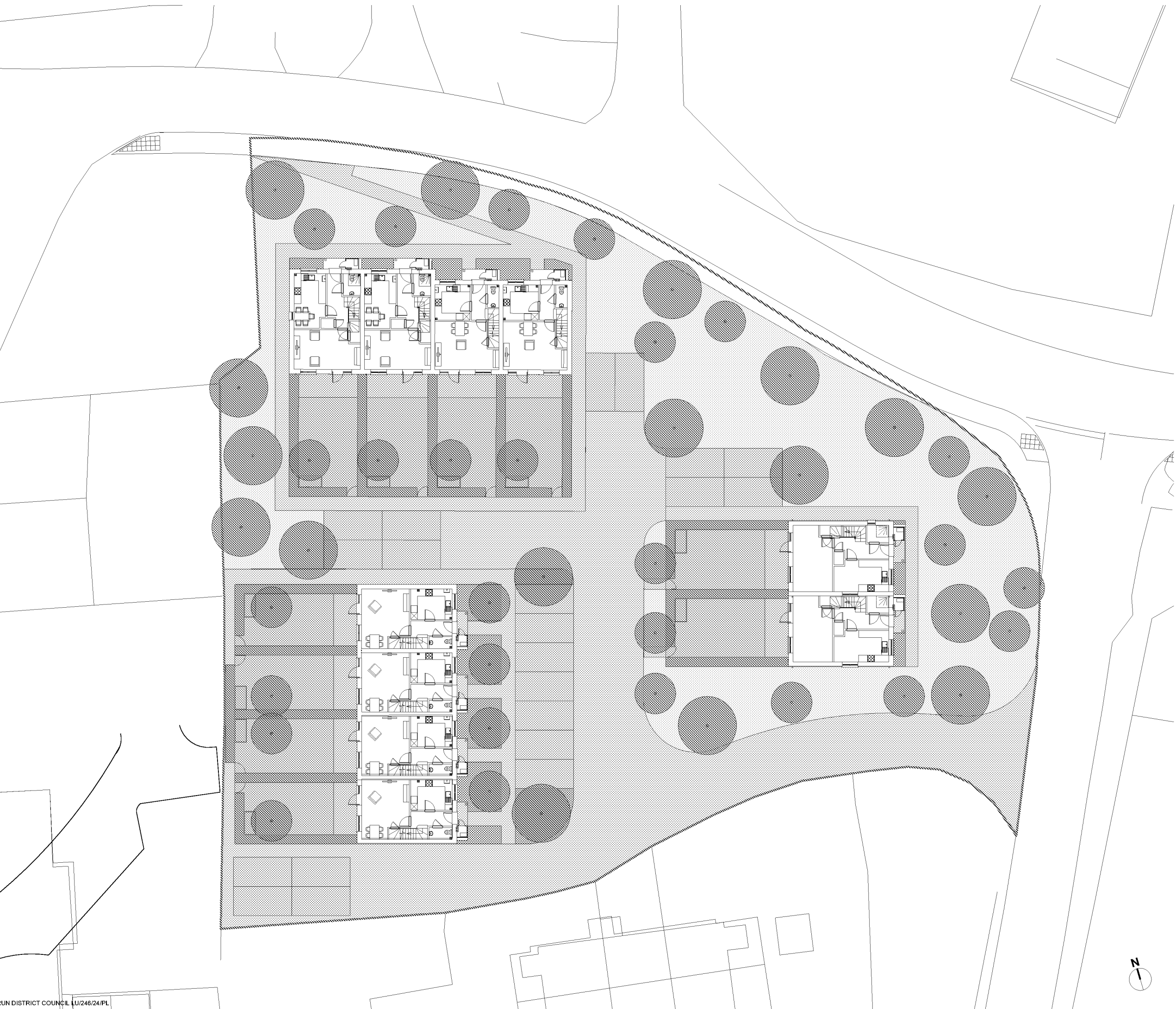
*Prunus spinosa*



*Viburnum opulus*

3 Drawings





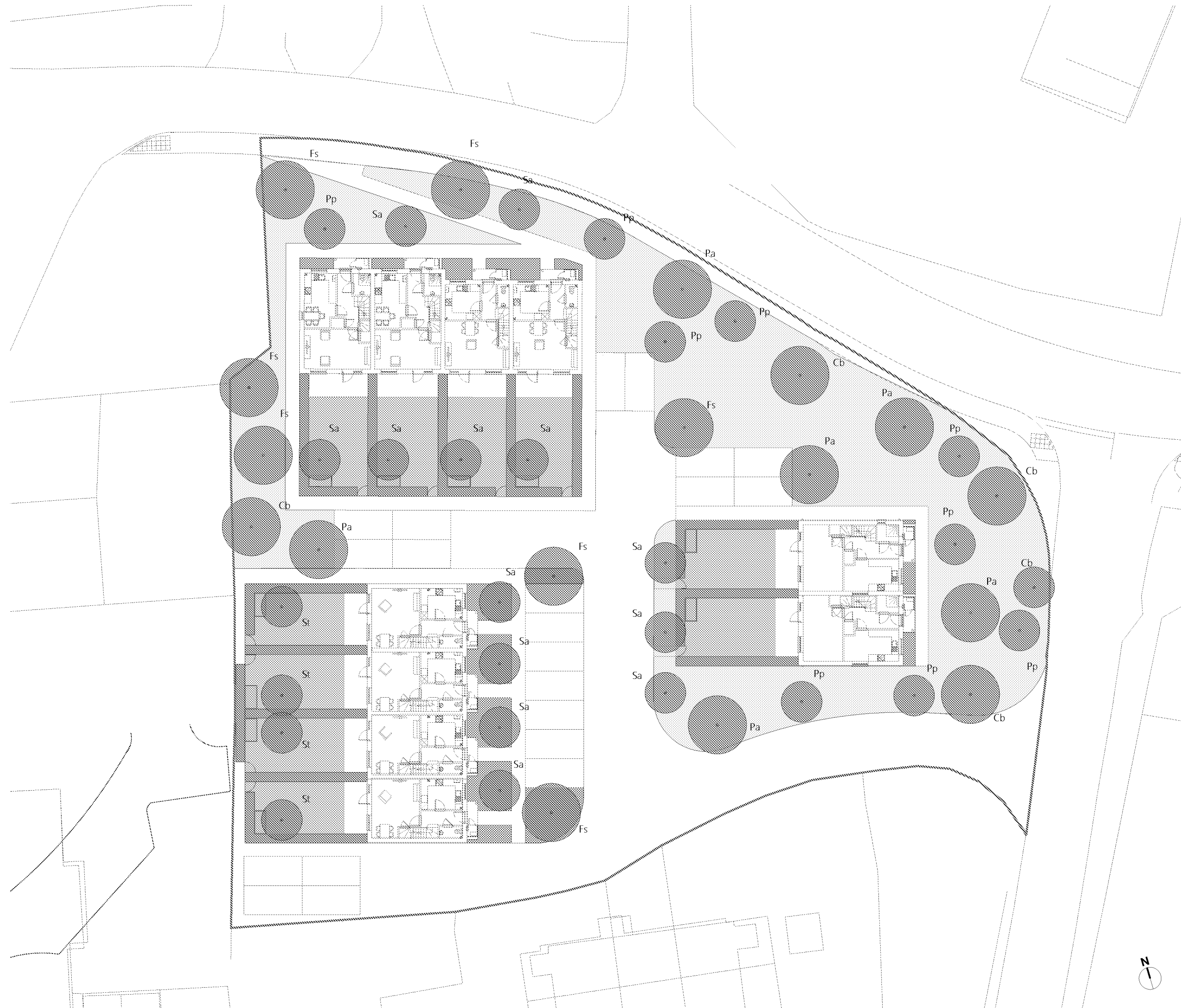
- Notes
1. Detail drawings show layouts and design intent and should be read in accordance with the Landscape General Arrangement drawings, Specifications, and any Schedules.
  2. All drawings to be read in conjunction with Consultants' reports.
  3. All details and interfaces to be developed with the contractor and key subcontractors.
  4. Key references are typical to specification.
  5. Drawings may indicate elements to be designed and specified by other consultants for coordination purposes. Please also refer to these drawings, schedules and specifications. Please report any discrepancies to Architect for confirmation.
  6. Full fabrication drawings to be provided for approval of all elements, details and interfaces.
  7. All existing build-ups and dimensions must be verified on site. Where possible specific assumptions/discrepancies have been noted on drawings but all existing conditions require verification on site. All discrepancies to be notified to the Architect.
  8. All materials, surface build-ups, levels and calculations may be subject to change and to be confirmed in later design stages.
  9. All interfaces with buildings to be surveyed prior to the commencement of the works.

- Key
- Project scope boundary
  - Permeable concrete block paving
  - Private terraces, concrete slabs
  - Hedges
  - Mixed shrubs
  - Meadow
  - Lawns
  - Garden sheds
  - Boundary fence
  - Proposed trees

PL01	05/09/2024	Planning issue	
Rev	Date	Description	Ctd

4 Elm Grove  
London SE15 5DB  
020 3638 6759  
info@studiogb.uk  
studiogb.uk

Project	Toddington Lane
Client	Worthing Homes
Drg title	Landscape GA
Drg nr	TLN-SGB-00-GF-DR-L-101
Scale	1:300 @A3
Status	Stage 2
Drawn	VG



- Notes
1. Detail drawings show layouts and design intent and should be read in accordance with the Landscape General Arrangement drawings, Specifications, and any Schedules.
  2. All drawings to be read in conjunction with Consultants' reports.
  3. All details and interfaces to be developed with the contractor and key subcontractors.
  4. Key references are typical to specification.
  5. Drawings may indicate elements to be designed and specified by other consultants for coordination purposes. Please also refer to these drawings, schedules and specifications. Please report any discrepancies to Architect for confirmation.
  6. Full fabrication drawings to be provided for approval of all elements, details and interfaces.
  7. All existing build-ups and dimensions must be verified on site. Where possible specific assumptions/discrepancies have been noted on drawings but all existing conditions require verification on site. All discrepancies to be notified to the Architect.
  8. All materials, surface build-ups, levels and calculations may be subject to change and to be confirmed in later design stages.
  9. All interfaces with buildings to be surveyed prior to the commencement of the works.

- Key
- Project scope boundary
  - Hedges  
Instant mixed native hedges, 1.8m height, 0.6m width
  - Mixed shrubs  
0.6m height, 6/m2
  - Lawns  
Species rich meadow turf, WFT-Species-Rich-26 by Wildflowerurf
  - Native meadow  
Grasses and wildflowers mix, WFT-Shade-41 by Wildflowerurf interplanted with shrubs, 0.2/m2, 1m height
  - Sedum roofs  
Mixed native sedum species mat on garden sheds roofs
  - Trees  
St - Sorbus torminalis, 5-6m height, 2m clear stem  
Sa - Sorbus aucuparia, 5-6m height, 2m clear stem  
Pa - Prunus avium, 5-6m height, 2m clear stem  
Pp - Prunus padus, 7m height, 2m clear stem  
Fs - Fagus sylvatica, 7m height, 2m clear stem  
Cb - Carpinus betulus, 7m height, 2m clear stem

PL01	05/09/2024	Planning issue	
Rev	Date	Description	Ctd

4 Elm Grove  
London SE15 5DB  
020 3638 6759  
info@studiogb.uk  
studiogb.uk

Project	Toddington Lane
Client	Worthing Homes
Drg title	Planting Strategy
Drg nr	TLN-SGB-00-GF-DR-L-102
Scale	1:300 @A3
Status	Stage 2
Drawn	VG



