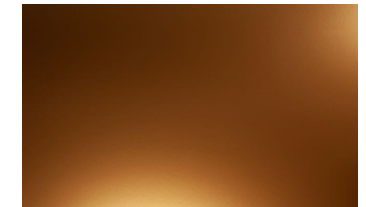




EAST ELEVATION



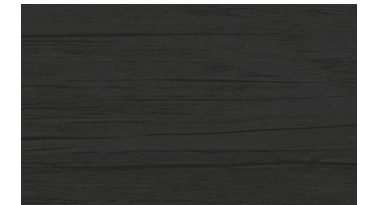
MATERIAL PALETTE



METAL CLADDING



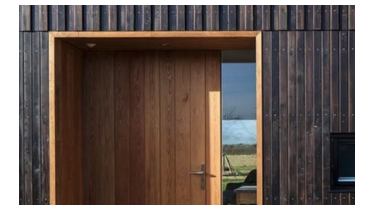
RENDER VERTICAL ELEMENTS



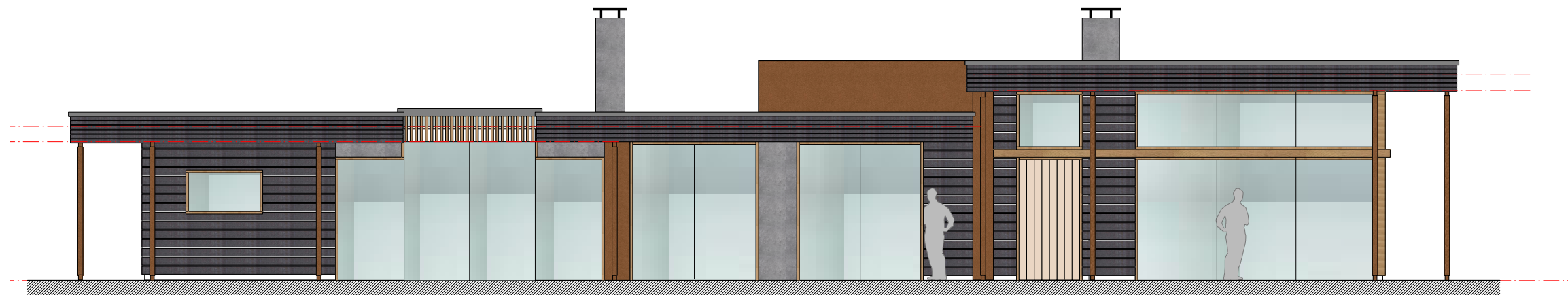
TIMBER CLADDING



DOORWAYS TO BE NATURAL OAK



RECESSED ENTRANCE/WINDOW FRAMES



NORTH ELEVATION



TIMBER LOUVRE DETAILS

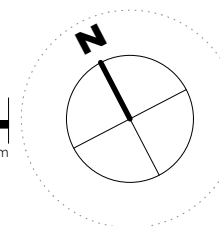
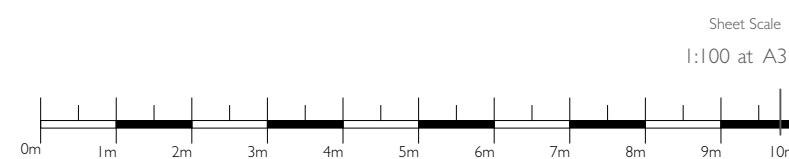


TIMBER CANOPY

Scan QR code for
our website



ABL3 Architects
27 Bulwer Street, W12 8AR



Client
MRS J COOPER
Project Start Date
October 2022

Project Title
REST HARROW
Job number
1059

Sheet Title
NORTH AND EAST ELEVATIONS AS
PROPOSED
Drawing number
P208
Revision
Date
Rev. Notes

ABL3
ARCHITECTS