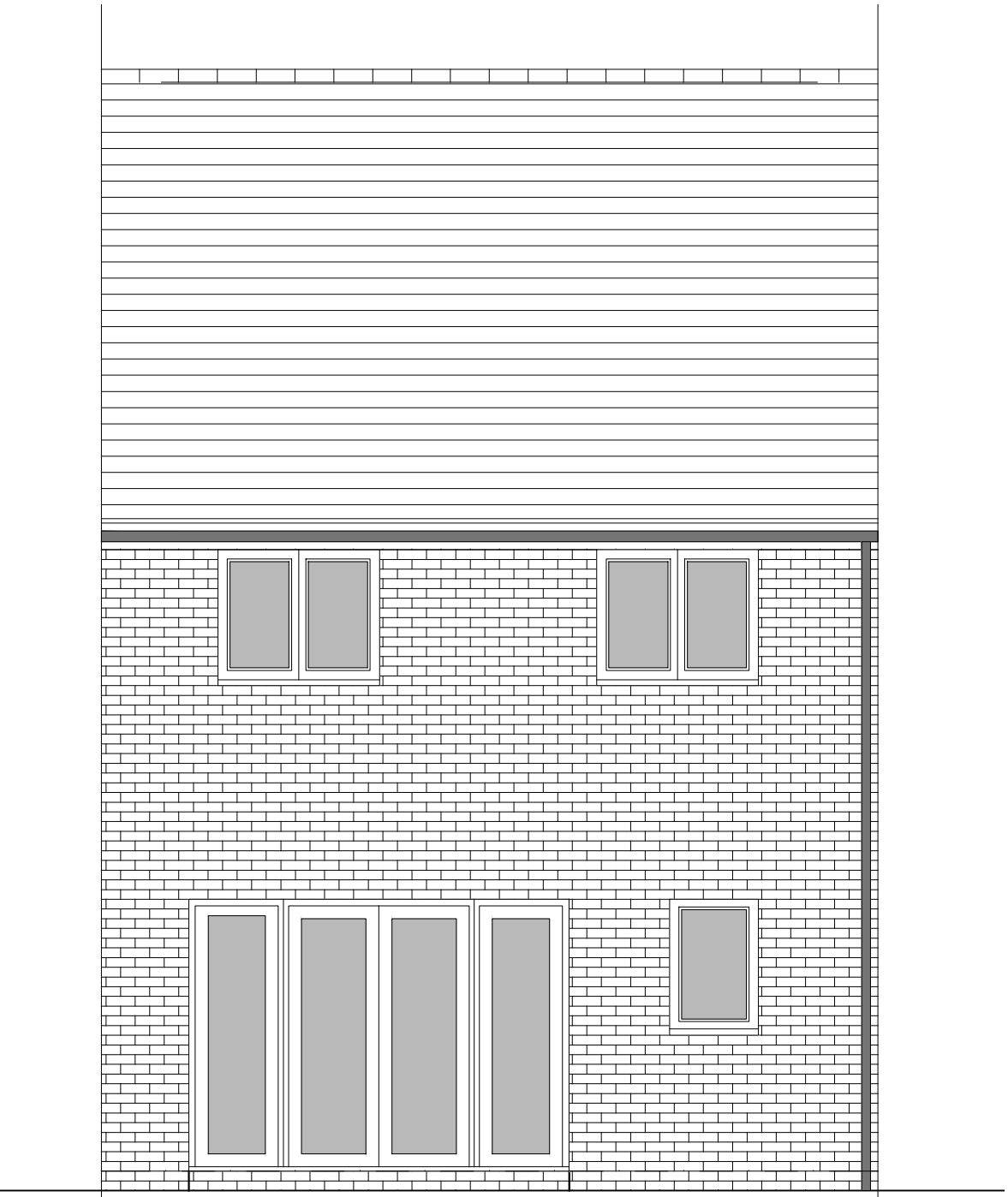


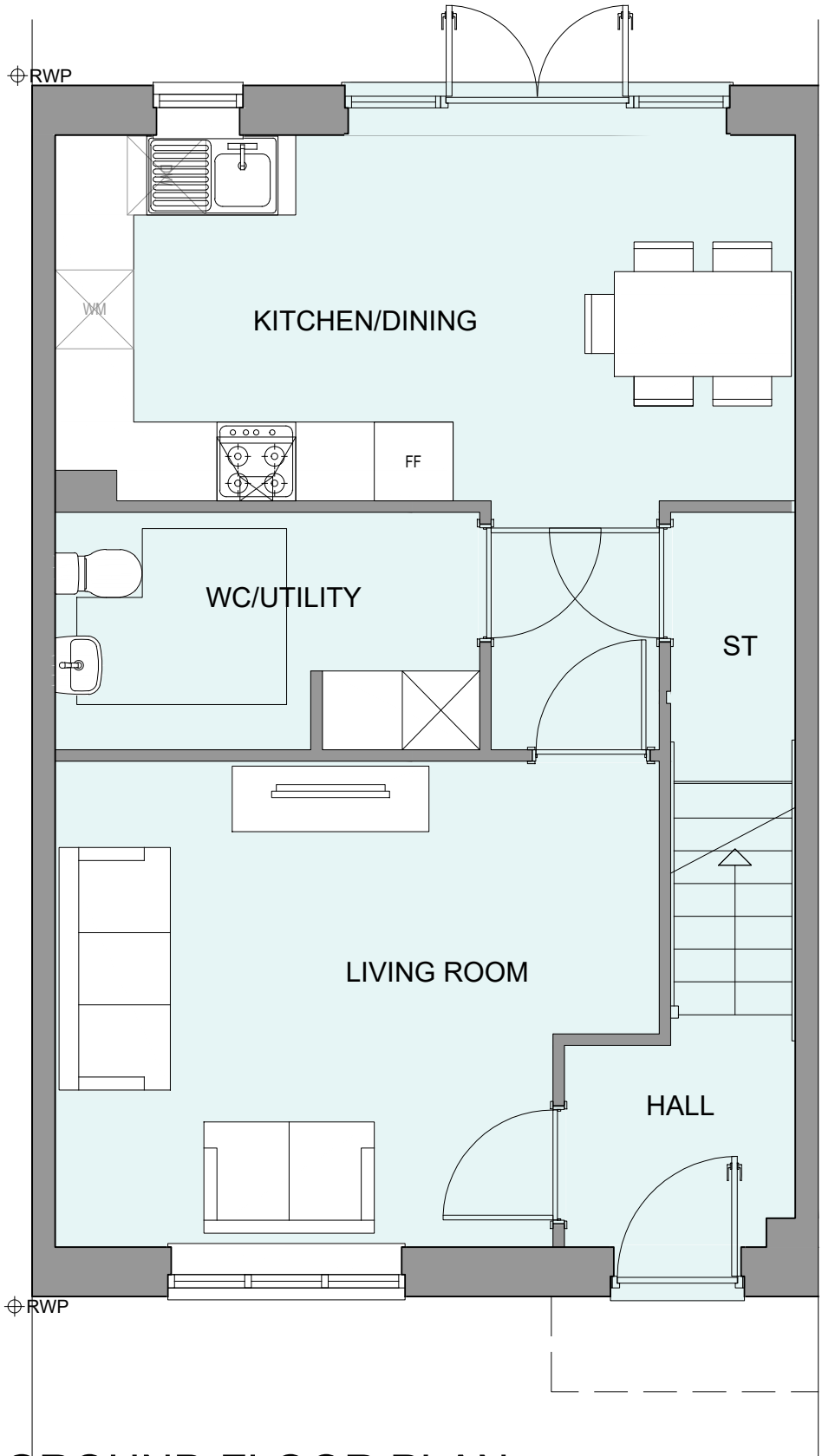
PHASE 4 THE LANDINGS, FORD, WEST SUSSEX  
PROPOSED HOUSETYPE PLANS - HT "351" VARIANT "V7"



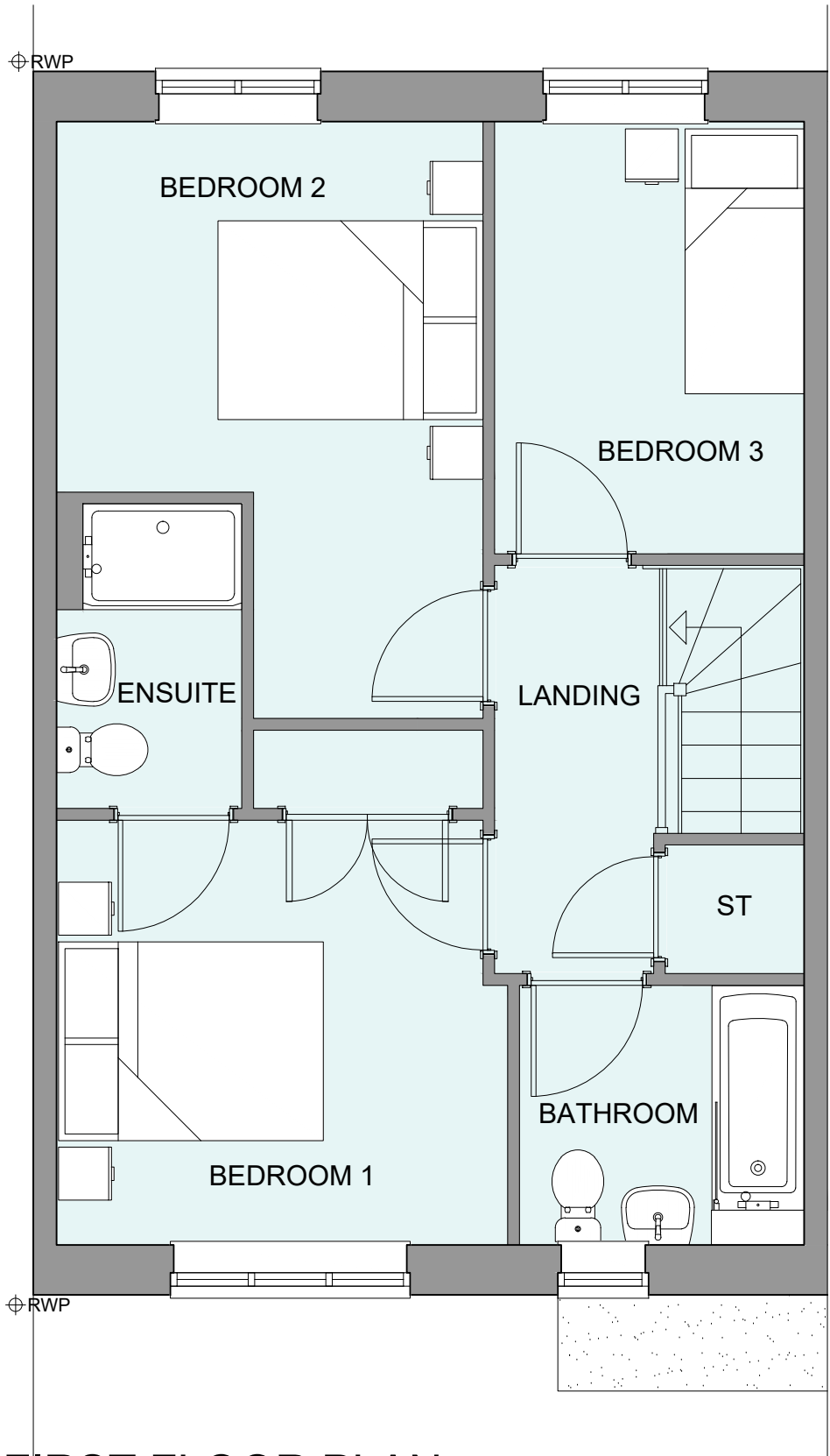
## FRONT ELEVATION



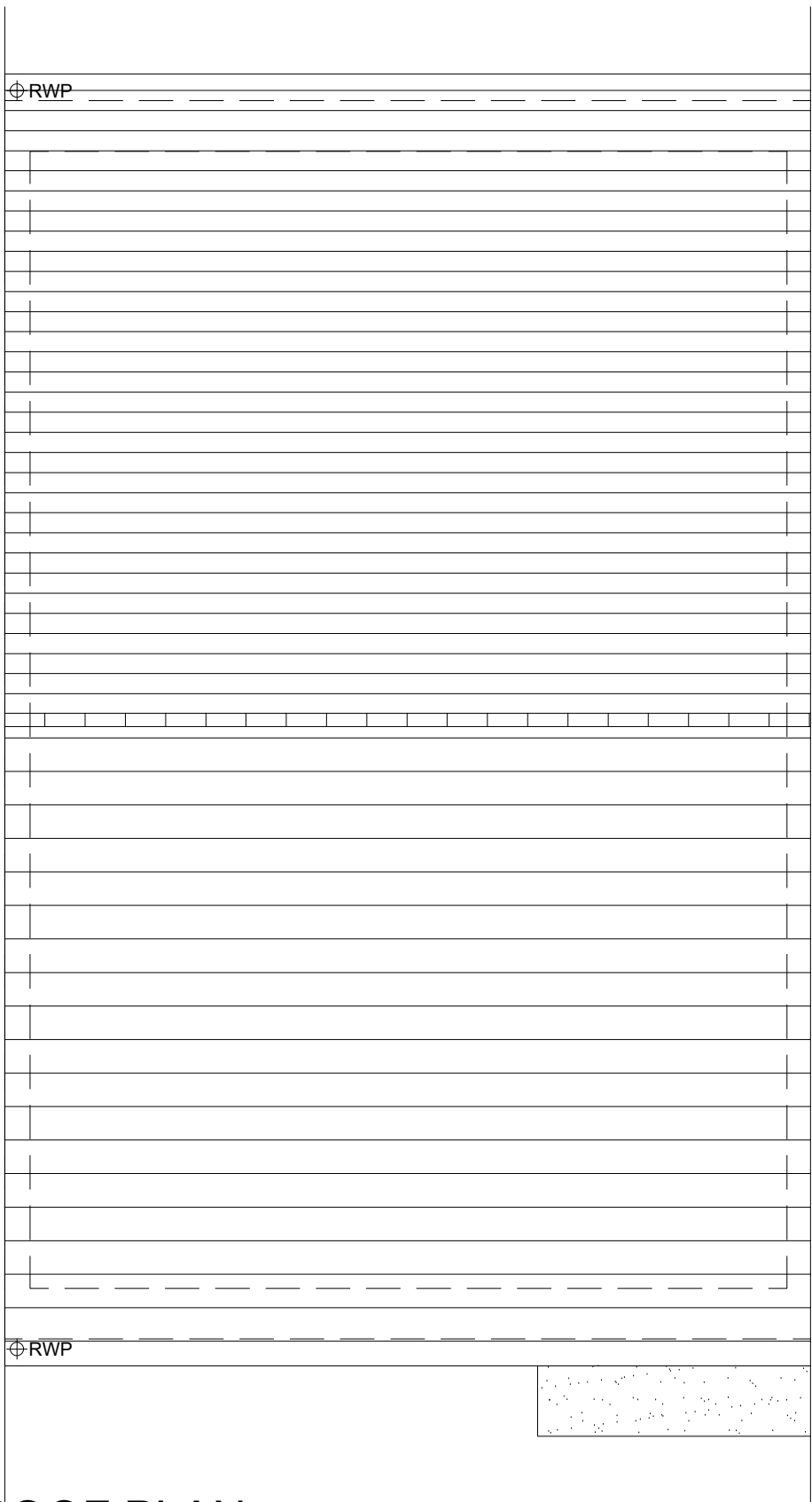
## REAR ELEVATION



## GROUND FLOOR PLAN



## FIRST FLOOR PLAN



## ROOF PLAN

HOUSETYPE VARIATIONS		
PLOT NUMBERS:	AS DRAWN	- 84
	HANDED	-
MATERIALS:	WALLS	- BRICK
	WALLS (TREATMENT)	- RENDER
	FENESTRATION	- UPVC
	OBSCURE WINDOWS	- BATHROOMS & ENSUITES
	EXTERNAL DOORS	- UPVC
	OBSCURE DOORS	-
	ROOF	- TILE
	GUTTERING & DOWNPIPES	- UPVC
	FASCIA & SOFFITS	- UPVC
WINDOW OMISSION*:	PLOT(S)	- N/A
AREA OF UNIT (GIA):	95.7sqm	1031sqft
B. REGS PART M:	MA(2)	
NDSS COMPLIANT:	YES	
CHARACTER AREA:	RYEBANK PARK	

PLEASE SEE ACCOMMODATION SCHEDULE  
FOR PLOT SPECIFIC PART M CATEGORY

Rev	Date	Amendment	Initials
<p>Project:</p> <p><b>PHASE 4 THE LANDINGS</b></p> <p><b>FORD, WEST SUSSEX</b></p> <p>Client:</p> <p>VISTRY SOUTH EAST</p> <p>Drawing:</p> <p><b>PROPOSED HOUSETYPE PLANS</b></p> <p><b>HT - "351" VARIANT "V7"</b></p>			
Drawing no:			Rev:
22.1706.4509			
Scale@A1:	1:50	Date:	DEC 24
Drawn:	JM	Checked:	YO

## PLANNING ISSUE



**Disclaimer:** © FINC Architects Limited holds the copyright to all the information contained within this document and their written consent must be obtained before copying or using the data other than for the purpose it was originally supplied.

All dimensions and measurements to be checked on site.  
Do not scale from this drawing. This drawing is to be printed in colour.

