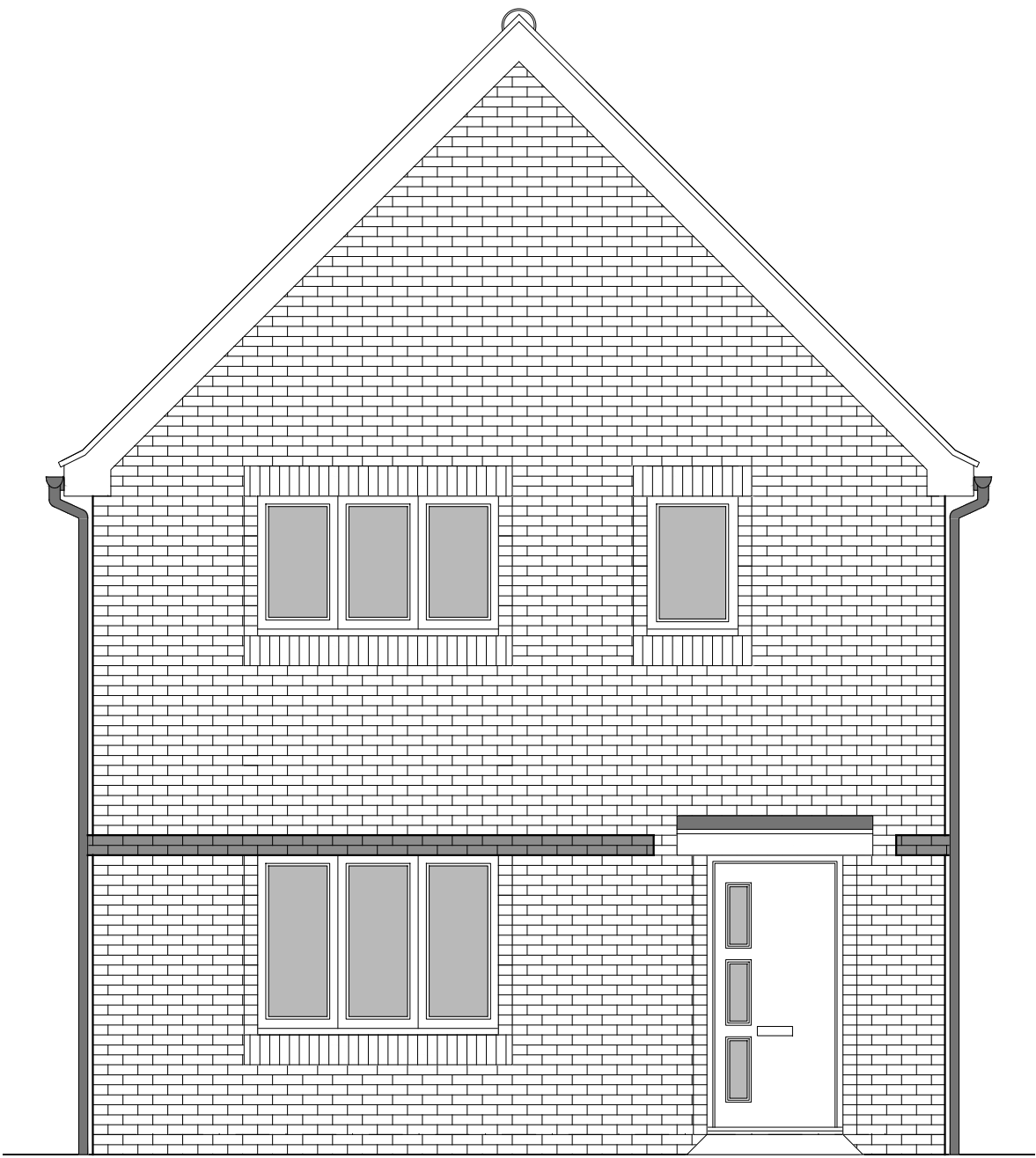


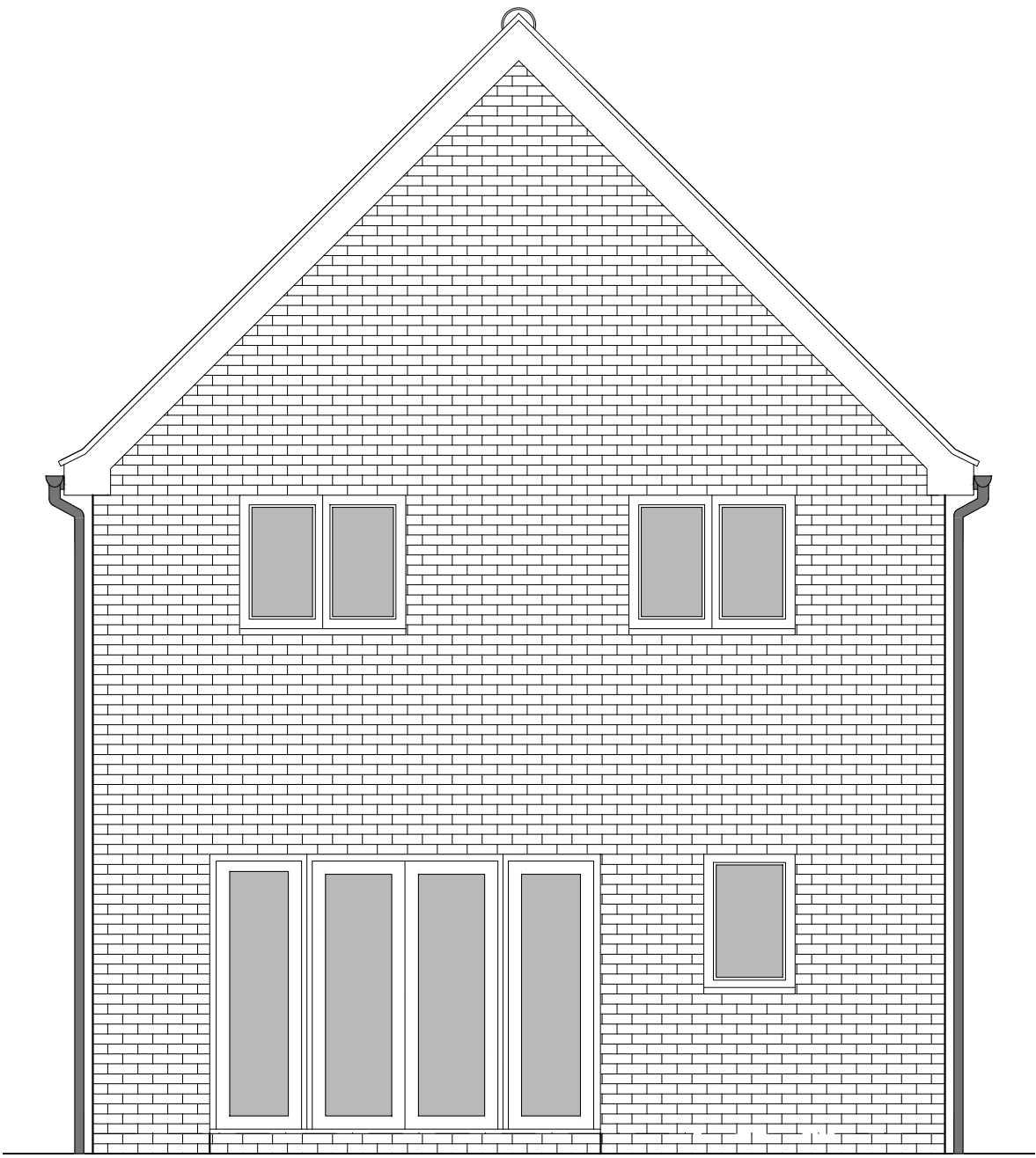
PHASE 4 THE LANDINGS, FORD, WEST SUSSEX  
PROPOSED HOUSETYPE ELEVATIONS - HT "351" VARIANT "V5"



FRONT ELEVATION



SIDE ELEVATION 1



REAR ELEVATION



SIDE ELEVATION 2

HOUSETYPE VARIATIONS		
PLOT NUMBERS:	AS DRAWN	- 50
	HANDED	-
MATERIALS:	WALLS	- BRICK
	WALLS (TREATMENT)	-
	FENESTRATION	- UPVC
	OBSCURER WINDOWS	- BATHROOMS & ENSUITES
	EXTERNAL DOORS	- UPVC
	OBSCURER DOORS	-
	ROOF	- TILE
	GUTTERING & DOWNPIPES	- UPVC
	FASCIA & SOFFITS	- UPVC
WINDOW OMISSION*:	PLOT(S)	- N/A
AREA OF UNIT (GIA):	95.7sqm	1031sqft
B. REGS PART M:	M4(2)	
NDSS COMPLIANT:	YES	
CHARACTER AREA:	RYEBANK PARK	

PLEASE SEE ACCOMMODATION SCHEDULE  
FOR PLOT SPECIFIC PART M CATEGORY



B	02.12.24	Front door, bedroom 1 window & roof amended to address LPA's comments	JM
A	15.08.24	Adapted To Suit Material Plan Changes	CLP
Rev	Date	Amendment	Initials

Project:  
PHASE 4 THE LANDINGS  
FORD, WEST SUSSEX

Client:  
VISTRY SOUTH EAST

Drawing:  
PROPOSED HOUSETYPE ELEVATIONS  
HT - "351" VARIANT "V5"

Drawing no:	22.1706.4506	Rev:	B
Scale@A1:	1:50	Date:	AUG 24
Drawn:	JC	Checked:	CH

finc	
61-63 New London Road   Chelmsford   Essex   CM2 0ND	
T: +44 (0)1245 933988	
W: www.fincarchitects.com	
E: company@fincarchitects.com	

Disclaimers: © Finc Architects Limited holds the copyright to all the information contained within this document and their written consent must be obtained before copying or using the data other than for the purpose it was originally supplied.  
All dimensions and measurements to be checked on site.  
Do not scale from this drawing. This drawing is to be printed in colour.

PLANNING ISSUE