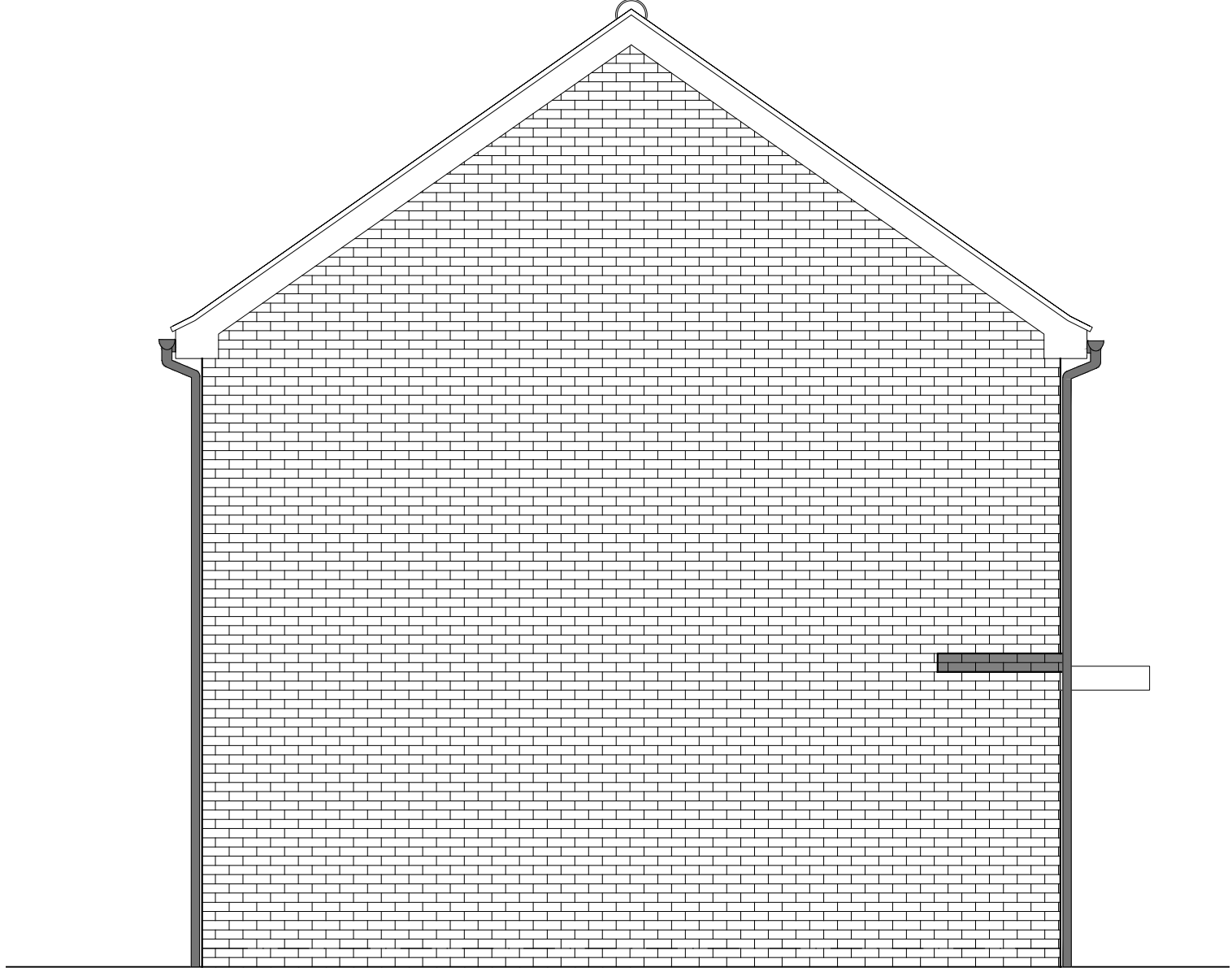


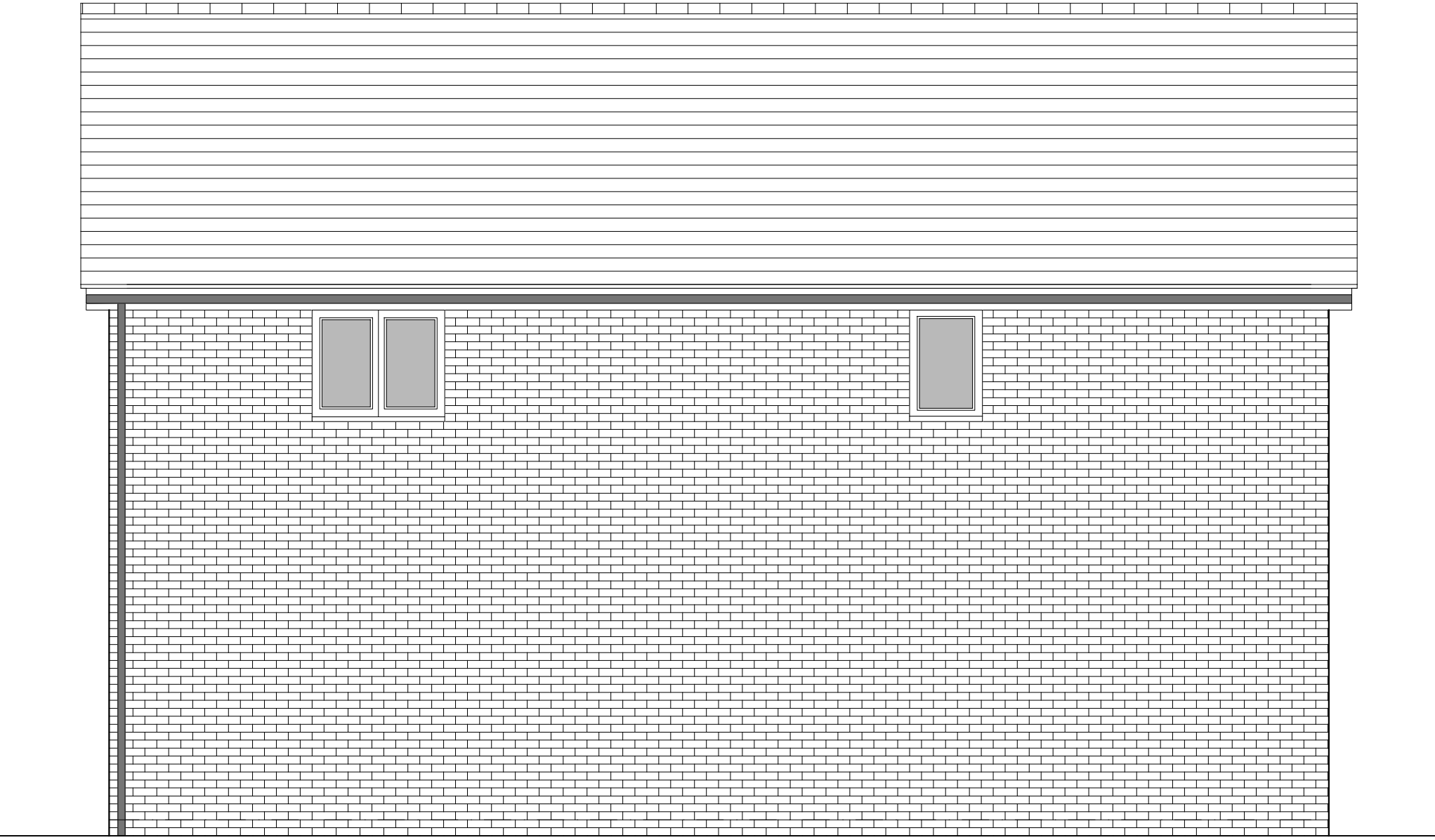
PHASE 4 THE LANDINGS, FORD, WEST SUSSEX
PROPOSED HOUSETYPE ELEVATIONS - HT "231" VARIANT "V1"



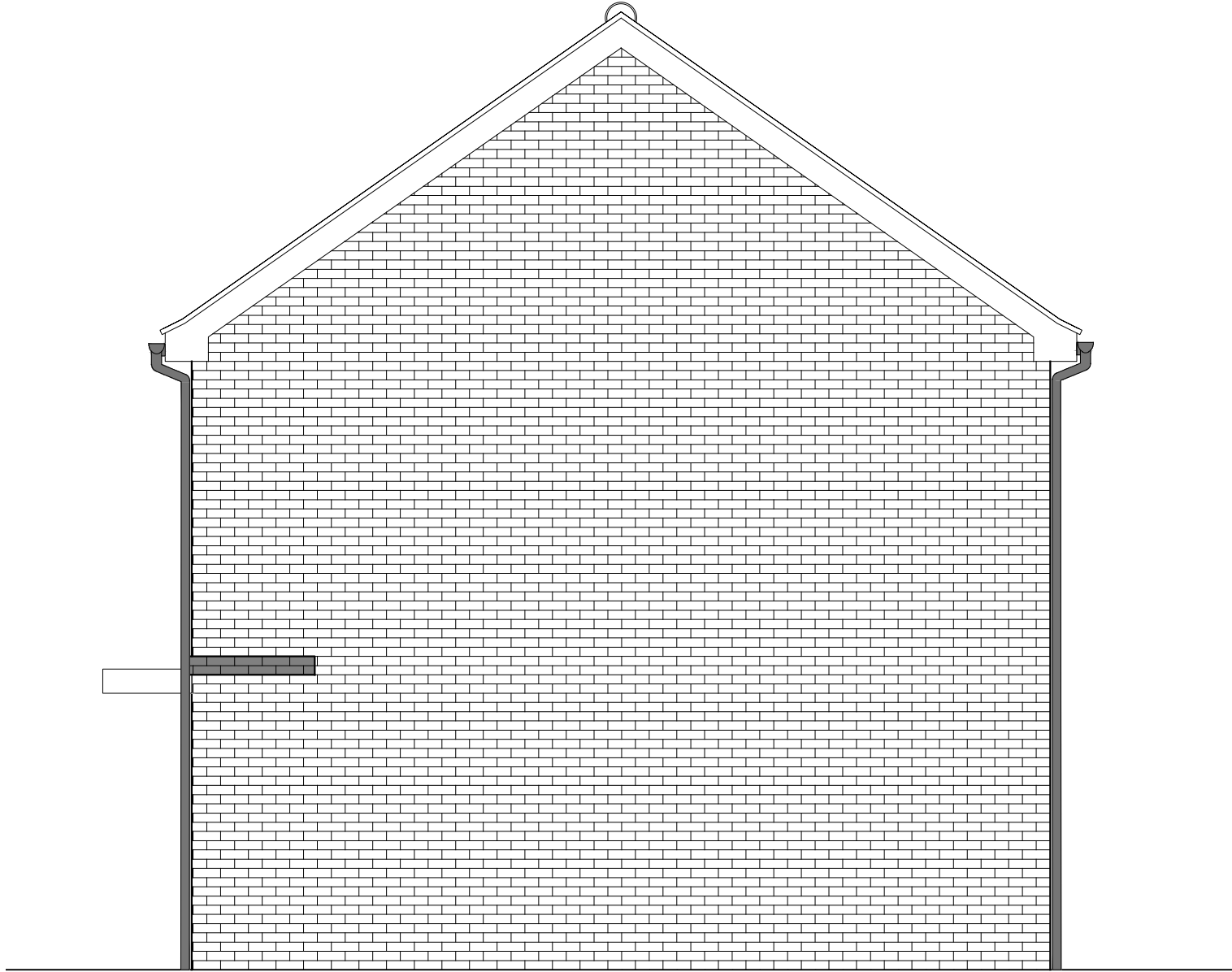
FRONT ELEVATION



SIDE ELEVATION 1



REAR ELEVATION



SIDE ELEVATION 2

HOUSETYPE VARIATIONS		
PLOT NUMBERS:	AS DRAWN	- 206
	HANDED	-
MATERIALS:	WALLS	- BRICK
	WALLS (TREATMENT)	-
	FENESTRATION	- UPVC
	OBSCURER WINDOWS	- BATHROOMS
	EXTERNAL DOORS	- UPVC
	OBSCURER DOORS	-
	ROOF	- TILE
	GUTTERING & DOWNPIPES	- UPVC
	FASCIA & SOFFITS	- UPVC
WINDOW OMISSION:	PLOT(S)	- N/A
AREA OF UNIT (GIA):	74.0sqm	797sqft
B. REGS PART M:	M4(1)	
NDSS COMPLIANT:	YES	
CHARACTER AREA:	RUNWAY PARK	

PLEASE SEE ACCOMMODATION SCHEDULE
FOR PLOT SPECIFIC PART M CATEGORY

B	12.12.24	Revised as per design officers comments	CLP
A	22.08.24	Hatch Transparency amended	JC
Rev	Date	Amendment	Initials

Project:			
PHASE 4 THE LANDINGS			
FORD, WEST SUSSEX			
Client:			
VISTRY SOUTH EAST			
Drawing:			
PROPOSED HOUSETYPE ELEVATIONS			
HT - "231" VARIANT "V1"			
Drawing no:		Rev:	
22.1706.4001		B	
Scale@A1:	1:50	Date:	AUG 24
Drawn:	CLP	Checked:	CH

finc	
61-63 New London Road Chelmsford Essex CM2 0ND	
T: +44 (0)1245 933888	
W: www.fincarchitects.com	
E: company@fincarchitects.com	

© Finc Architects Limited holds the copyright to all the information contained within this document and their written consent must be obtained before copying or using the data other than for the purpose it was originally supplied.

All dimensions and measurements to be checked on site.

Do not scale from this drawing. This drawing is to be printed in colour.



PLANNING ISSUE