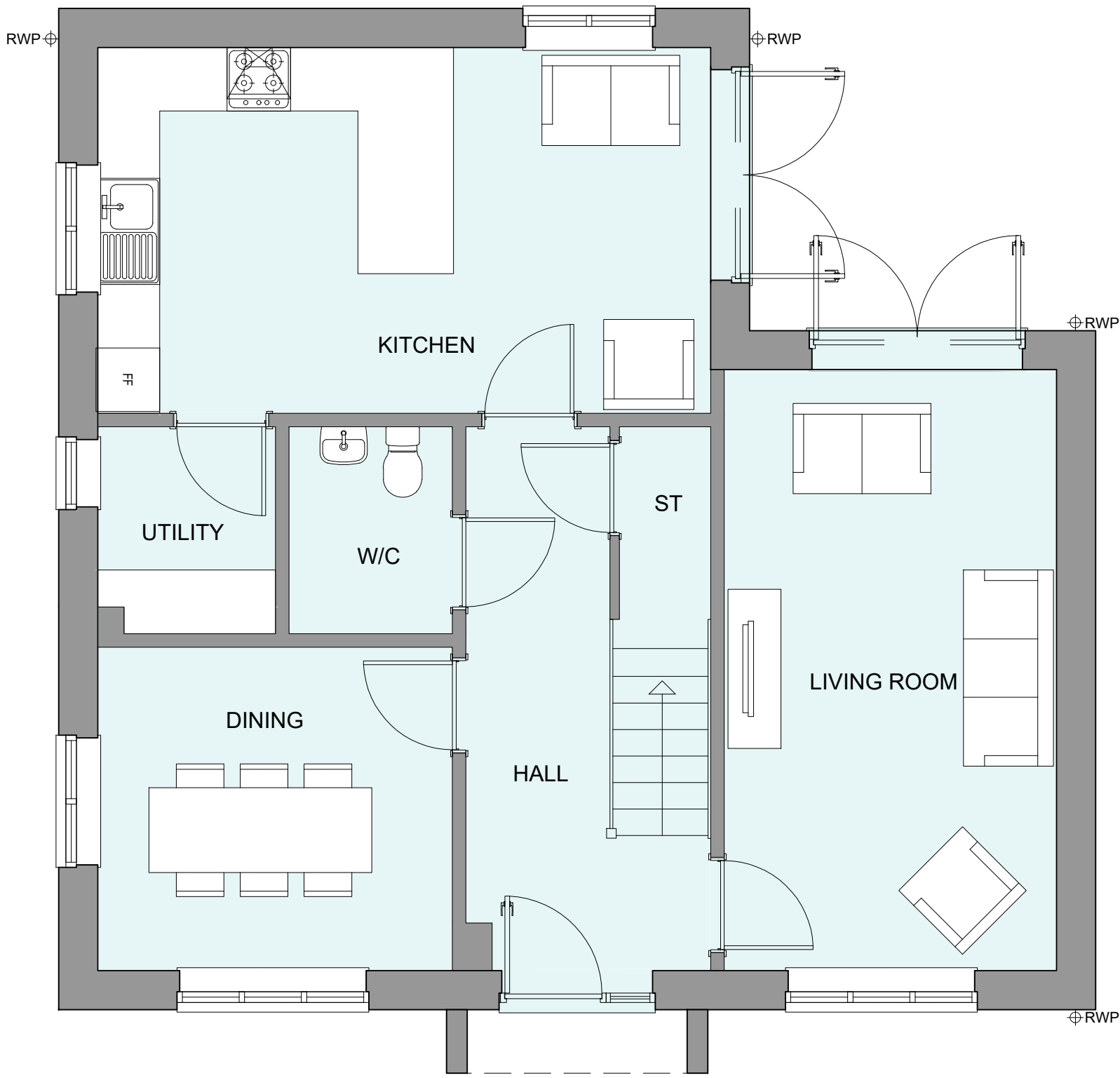


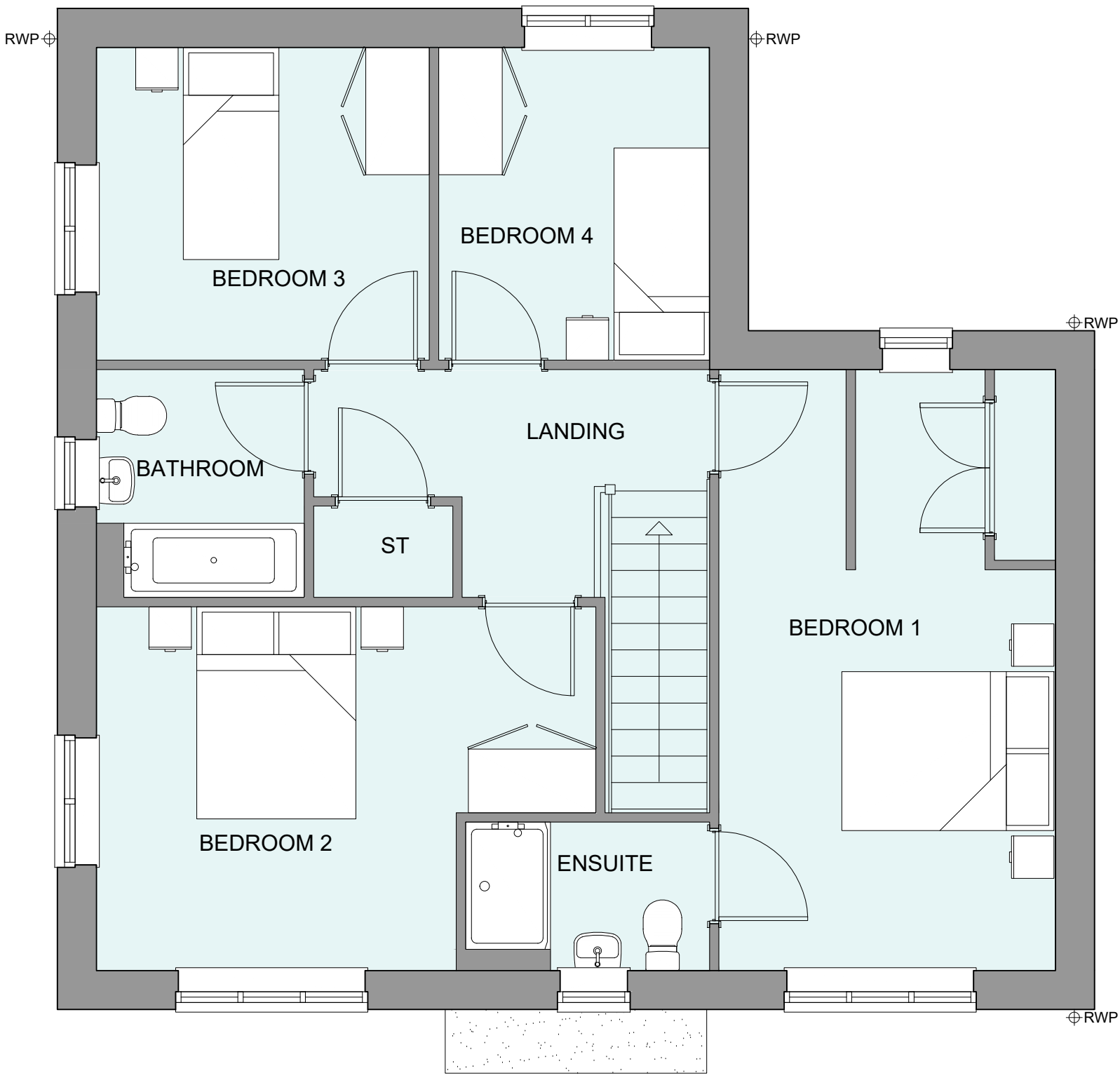
PHASE 4 THE LANDINGS, FORD, WEST SUSSEX  
PROPOSED HOUSETYPE PLANS - HT "467" VARIANT "V4"

HOUSETYPE VARIATIONS		
PLOT NUMBERS:	AS DRAWN	- 44
	HANDED	- 30
MATERIALS:	WALLS	- BRICK
	WALLS (TREATMENT)	- TILE HANGING
	FENESTRATION	- UPVC
	OBSCURE WINDOWS	- BATHROOMS & ENSUITES
	EXTERNAL DOORS	- UPVC
	OBSCURE DOORS	-
	ROOF	- TILE
WINDOW OMISSION*:	PLOT(S)	- N/A
	AREA OF UNIT (GIA):	137.6sqm 1481sqft
B. REGS PART M:	M4(2)	
NDSS COMPLIANT:	YES	
CHARACTER AREA:	RYEBANK PARK	

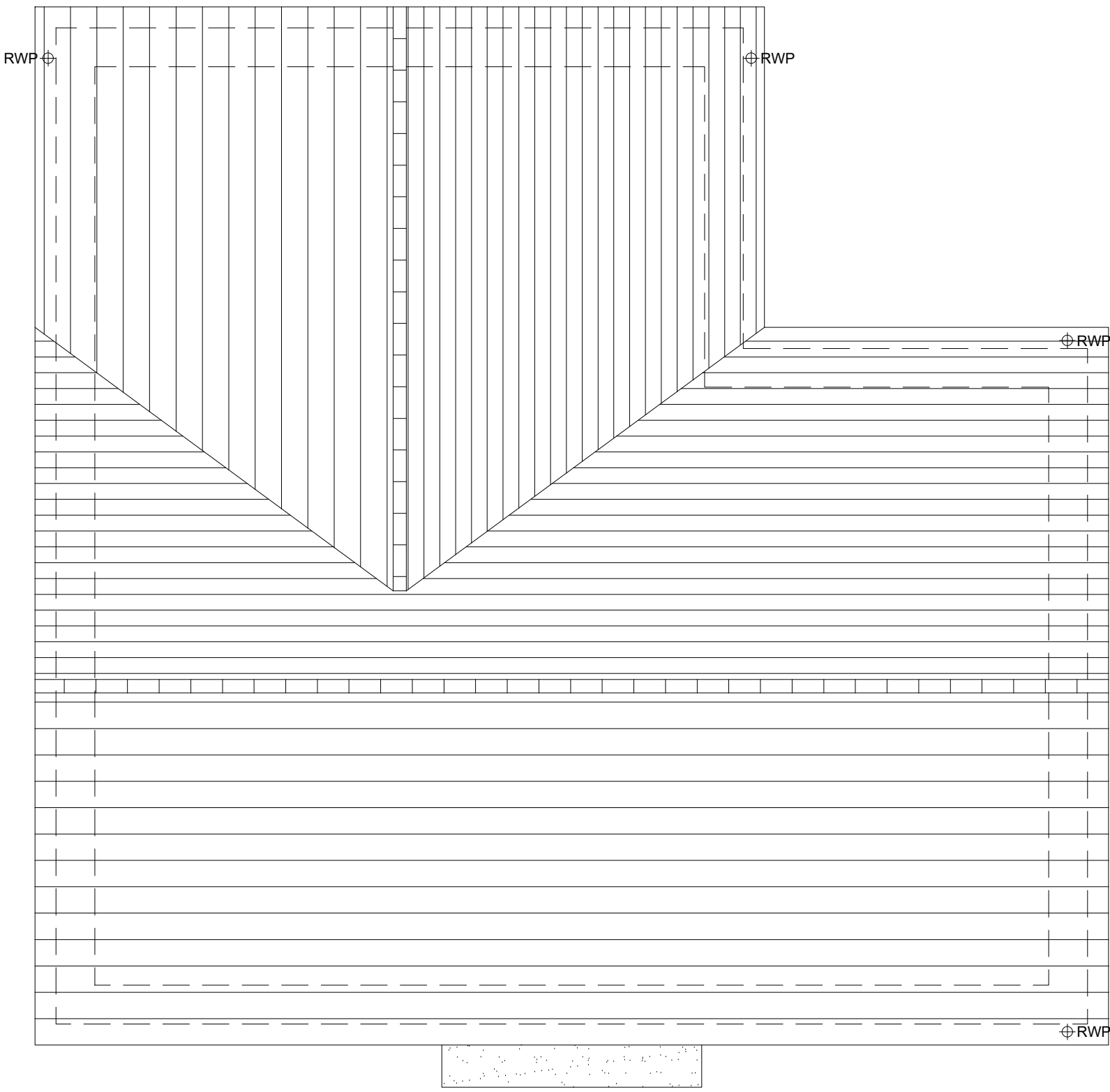
PLEASE SEE ACCOMMODATION SCHEDULE  
FOR PLOT SPECIFIC PART M CATEGORY



GROUND FLOOR PLAN



FIRST FLOOR PLAN



ROOF PLAN



B	10/12/2024	Revised canopy & door style to address LPA's comments	CLP
A	15.08.24	Adapted To Suit Material Plan Changes	CLP
Rev	Date	Amendment	Initials

Project:  
PHASE 4 THE LANDINGS  
FORD, WEST SUSSEX  
Client:  
VISTRY SOUTH EAST  
Drawing:  
PROPOSED HOUSETYPE PLANS  
HT - "467" VARIANT "V4"

Drawing no:	22.1706.5056	Rev:	B
Scale@A1:	1:50	Date:	AUG 24
Drawn:	JC/CH	Checked:	YC

**finc** Architects Ltd  
61-63 New London Road | Chelmsford | Essex | CM2 0ND  
T: +44 (0)1245 933988  
W: [www.fincarchitects.com](http://www.fincarchitects.com)  
E: [company@fincarchitects.com](mailto:company@fincarchitects.com)

**Disclaimer:**  
© Finc Architects Limited holds the copyright to all the information contained within this document and their written consent must be obtained before copying or using the data other than for the purpose it was originally supplied.  
All dimensions and measurements to be checked on site.  
Do not scale from this drawing. This drawing is to be printed in colour.

PLANNING ISSUE