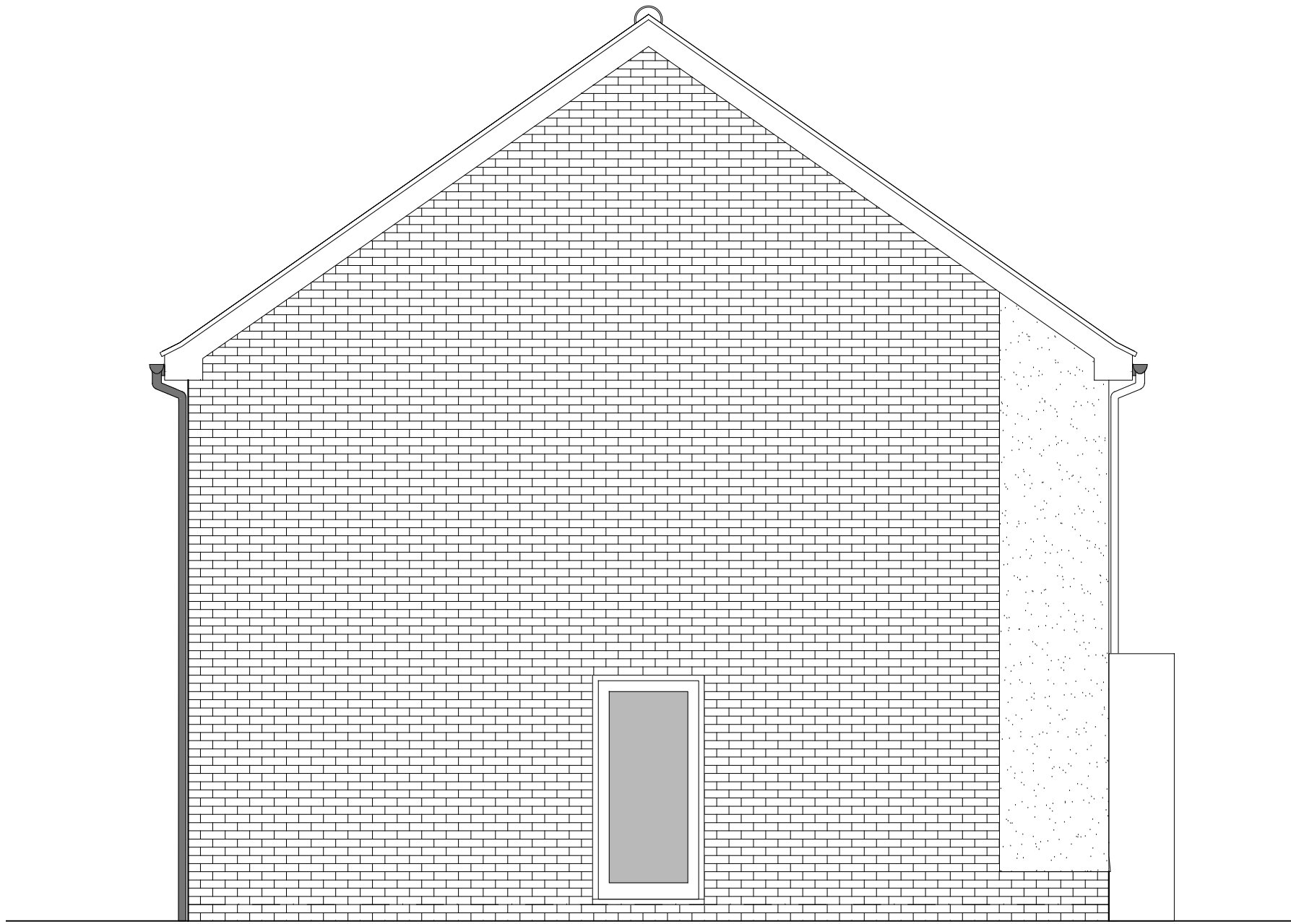


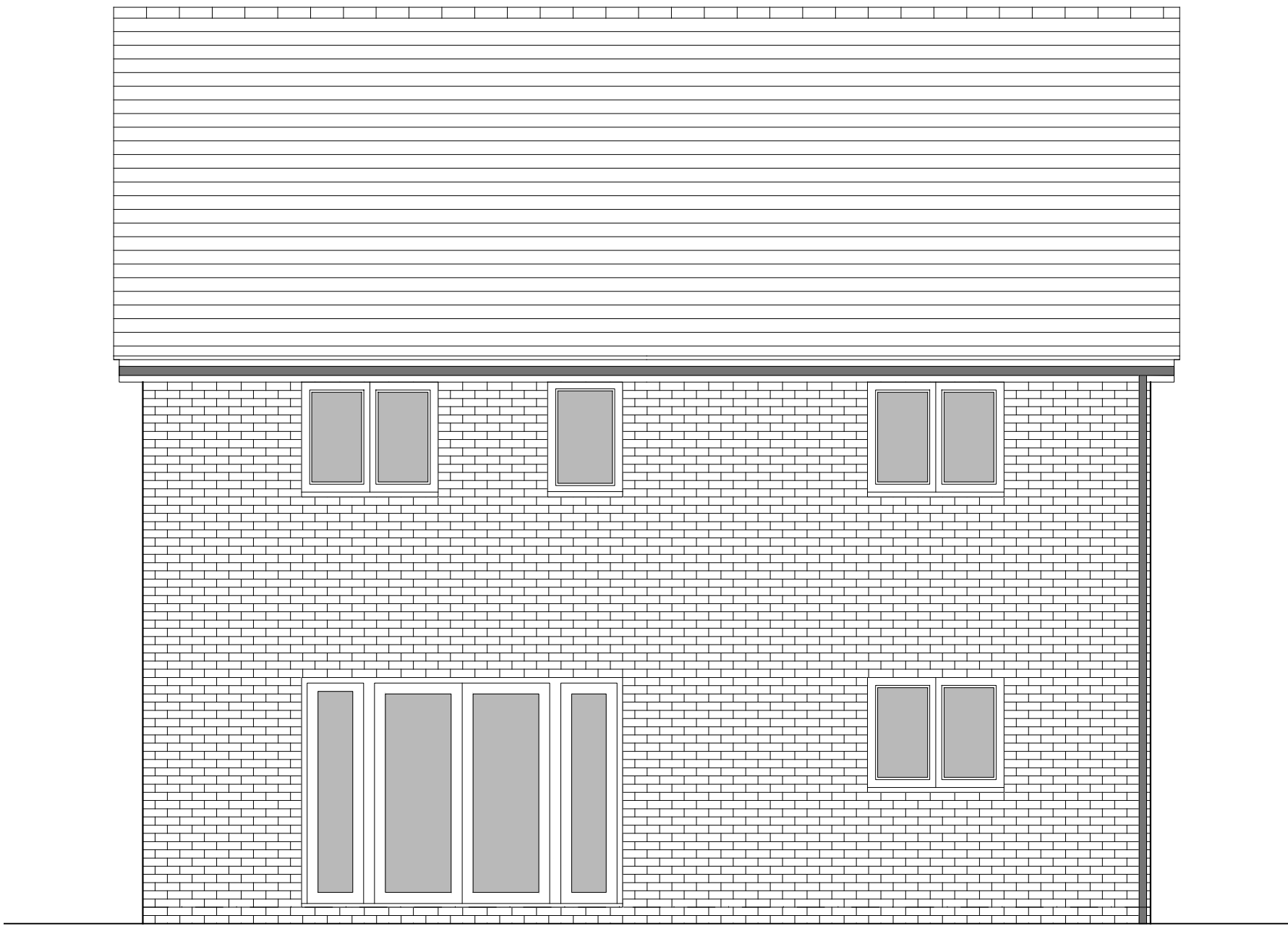
PHASE 4 THE LANDINGS, FORD, WEST SUSSEX
PROPOSED HOUSETYPE ELEVATIONS - HT "462" VARIANT "V2"



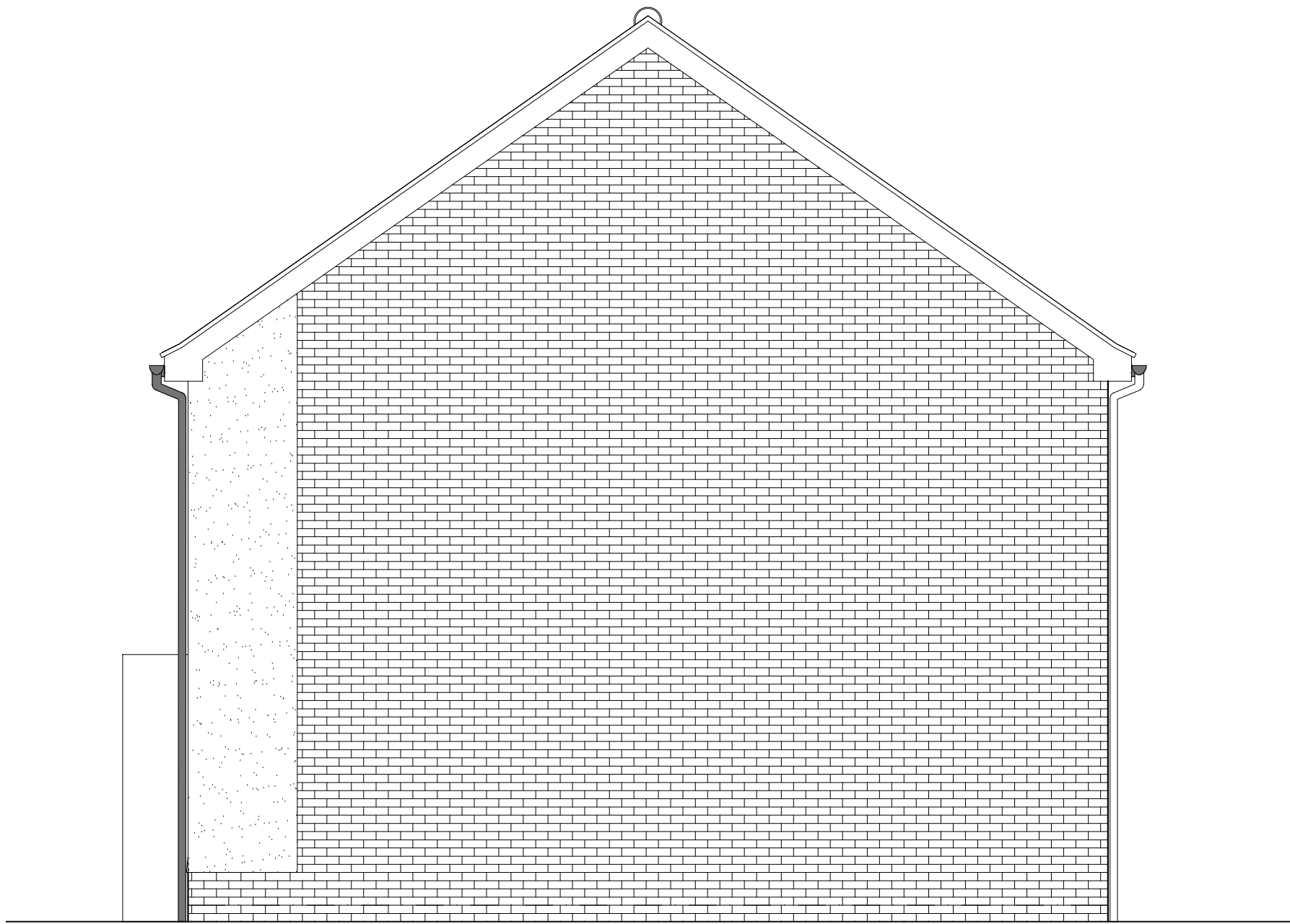
FRONT ELEVATION



SIDE ELEVATION 1



REAR ELEVATION



SIDE ELEVATION 2

HOUSETYPE VARIATIONS		
PLOT NUMBERS:	AS DRAWN	- 29
	HANDED	- N/A
MATERIALS:	WALLS	- BRICK
	WALLS (TREATMENT)	- RENDER
	FENESTRATION	- UPVC
	OBSCUREROWS	- BATHROOMS & ENSUITES
	EXTERNAL DOORS	- UPVC
	OBSCUREROWS	- UTILITY ROOM
	ROOF	- TILE
WINDOW OMISSION*:	GUTTERING & DOWNPIPES	- UPVC
	FASCIA & SOFFITS	- UPVC
AREA OF UNIT (GIA):	PLOT(S)	- N/A
	130.5sqm	1404sqft
B. REGS PART M:		
M4(2)		
NDSS COMPLIANT:		
YES		
CHARACTER AREA:		
RYEBANK PARK		

PLEASE SEE ACCOMMODATION SCHEDULE
FOR PLOT SPECIFIC PART M CATEGORY



B	27.11.24	Revised as per planning comments 01.11.2024. Plot number adjusted to suite the new layout	CLP
A	21-08-24	Revised Canopy Height	CLP
Rev	Date	Amendment	Initials

Project:
PHASE 4 THE LANDINGS
FORD, WEST SUSSEX
Client:
VISTRY SOUTH EAST
Drawing:
PROPOSED HOUSETYPE ELEVATIONS
HT - "462" VARIANT "V2"

Drawing no:		Rev:	
22.1706.4903		B	
Scale@A1:	1:50	Date:	AUG 24
Drawn:	JC/CH	Checked:	YC

finc		Finc Architects Ltd	
61-63 New London Road Chelmsford Essex CM2 0ND		T: +44 (0)1245 933888	
W: www.fincarchitects.com		E: company@fincarchitects.com	

Disclaimers:
© Finc Architects Limited holds the copyright to all the information contained within this document and their written consent must be obtained before copying or using the data other than for the purpose it was originally supplied.
All dimensions and measurements to be checked on site.
Do not scale from this drawing. This drawing is to be printed in colour.

PLANNING ISSUE