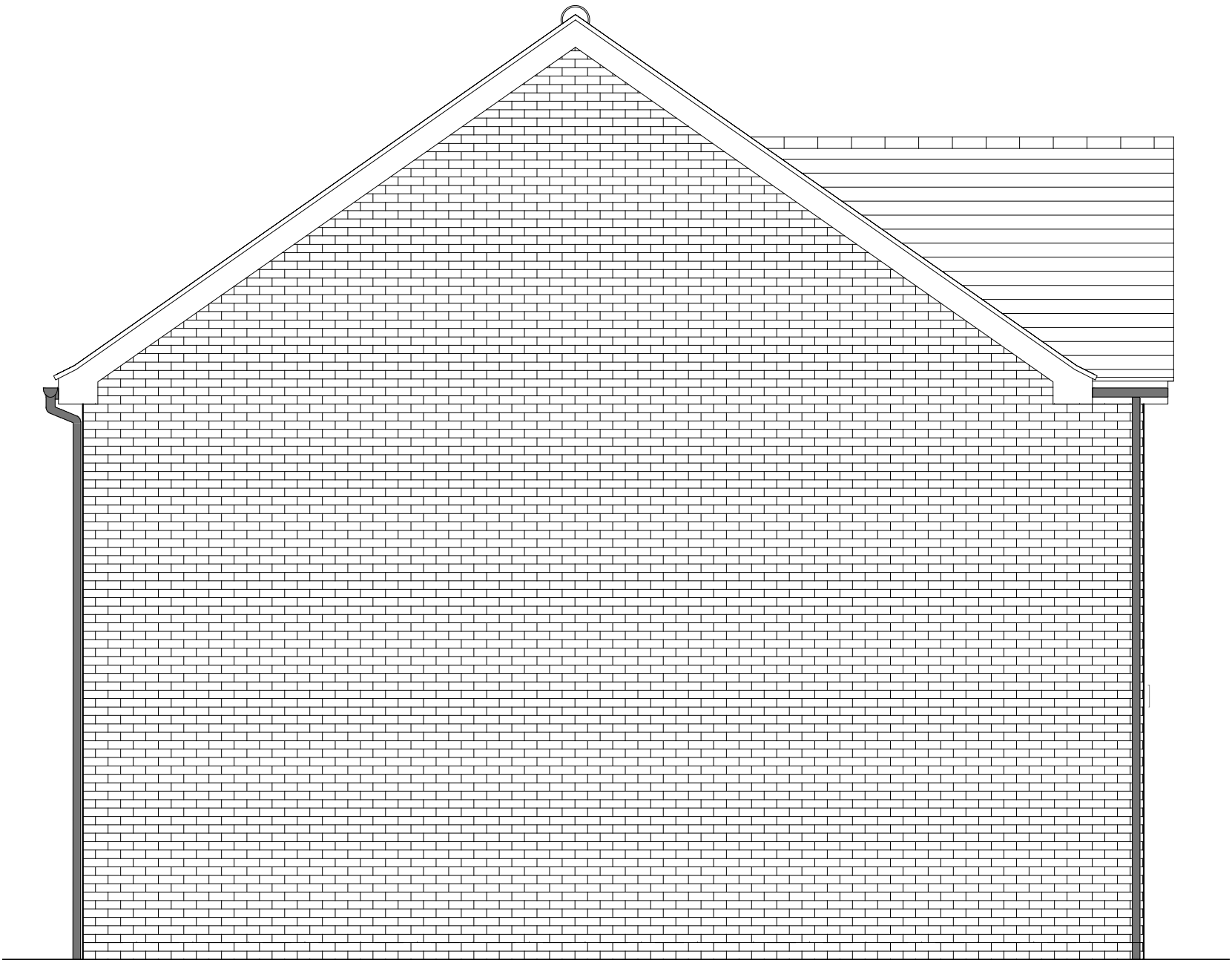


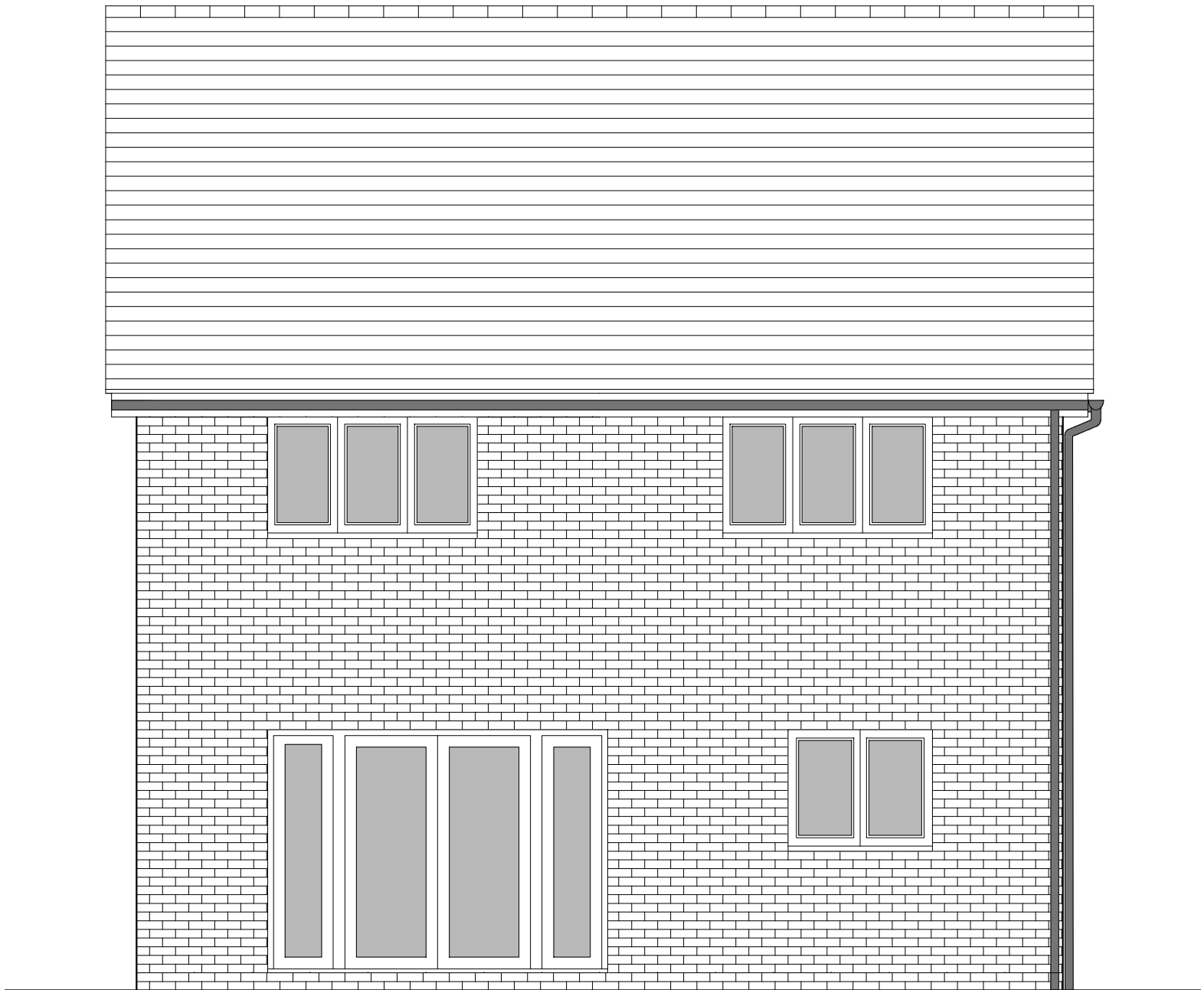
PHASE 4 THE LANDINGS, FORD, WEST SUSSEX
PROPOSED HOUSETYPE ELEVATIONS - HT "461" VARIANT "V5"



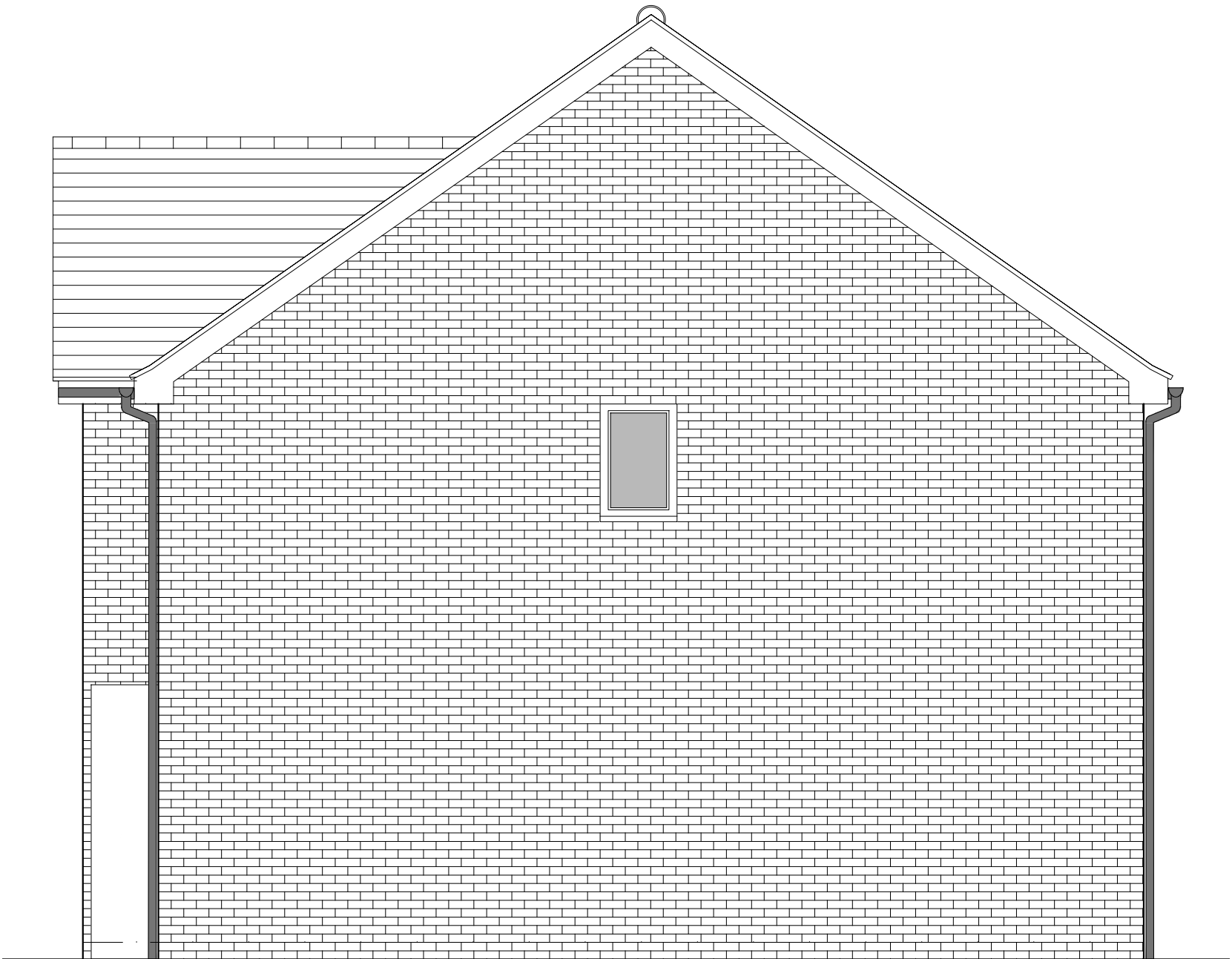
FRONT ELEVATION



SIDE ELEVATION 1



REAR ELEVATION



SIDE ELEVATION 2

HOUSETYPE VARIATIONS		
PLOT NUMBERS:	AS DRAWN	- 286
	HANDED	- 289
MATERIALS:	WALLS	- BRICK
	WALLS (TREATMENT)	- RENDER
	FENESTRATION	- UPVC
	OBSCURER WINDOWS	- BATHROOMS & ENSUITES
	EXTERNAL DOORS	- UPVC
	OBSCURER DOORS	-
	ROOF	- TILE
	GUTTERING & DOWNPIPES	- UPVC
	FASCIA & SOFFITS	- UPVC
WINDOW OMISSION*:	PLOT(S)	- N/A
AREA OF UNIT (GIA):	120.5sqm	1297sqft
B. REGS PART M:	M4(2)	
NDSS COMPLIANT:	YES	
CHARACTER AREA:	RUNWAY PARK	

PLEASE SEE ACCOMMODATION SCHEDULE
FOR PLOT SPECIFIC PART M CATEGORY



B	10.12.24	New plot applied to suit the new layout	YC
A	21.08.24	Adapted To Suit Material Plan Changes & Window Removed	CLP
Rev	Date	Amendment	Initials
Project: PHASE 4 THE LANDINGS FORD, WEST SUSSEX			
Client: VISTRY SOUTH EAST			
Drawing: PROPOSED HOUSETYPE ELEVATIONS HT - "461" VARIANT "V5"			
Drawing no:		Rev:	
22.1706.4859		B	
Scale@A1:	1:50	Date:	AUG 24
Drawn:	JC/CH	Checked:	YC

finc

61-63 New London Road | Chelmsford | Essex | CM2 0ND
T: +44 (0)1245 933988
W: www.fincarchitects.com
E: company@fincarchitects.com

Disclaimers: © Finc Architects Limited holds the copyright to all the information contained within this document and their written consent must be obtained before copying or using the data other than for the purpose it was originally supplied.
All dimensions and measurements to be checked on site.
Do not scale from this drawing. This drawing is to be printed in colour.

PLANNING ISSUE