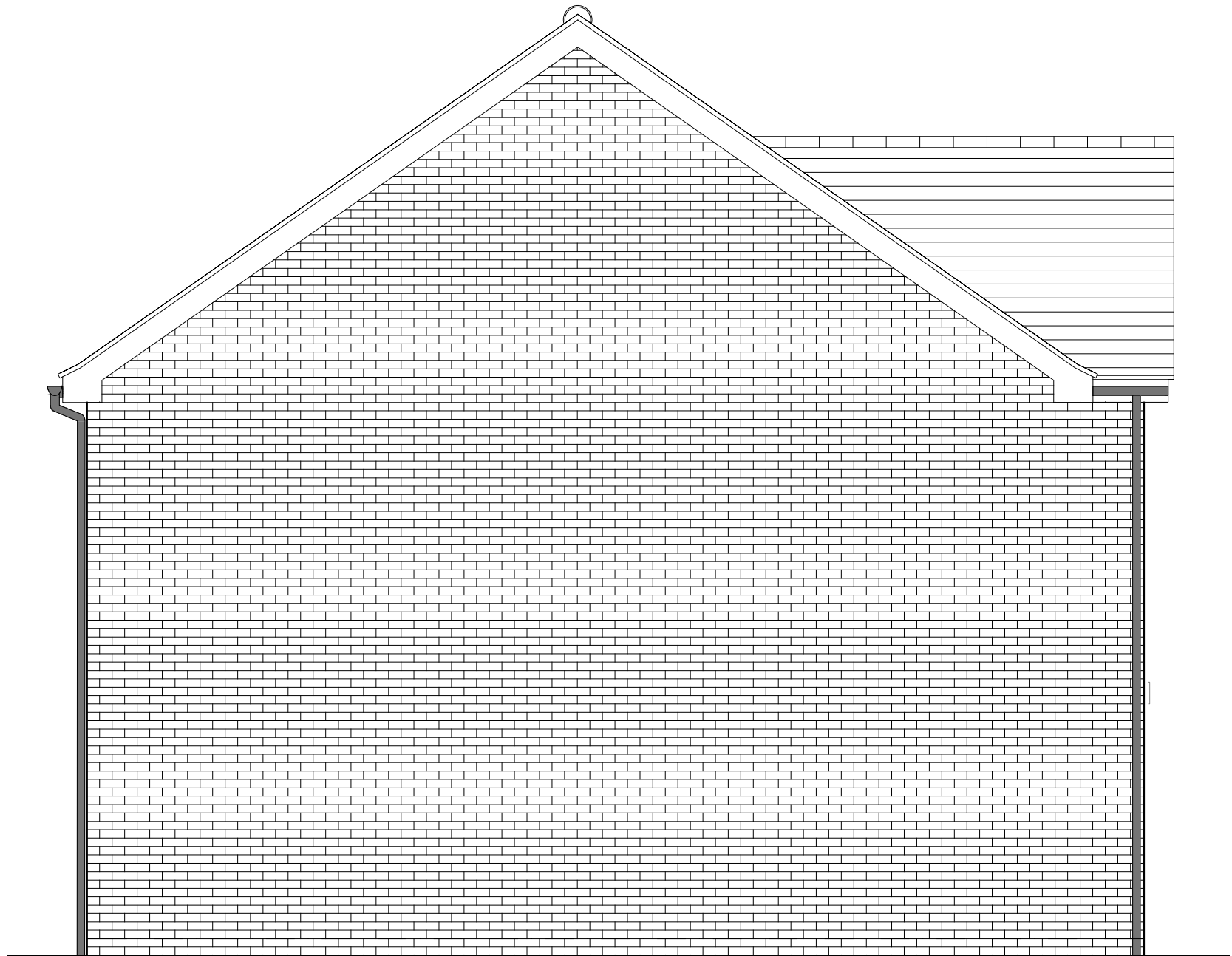


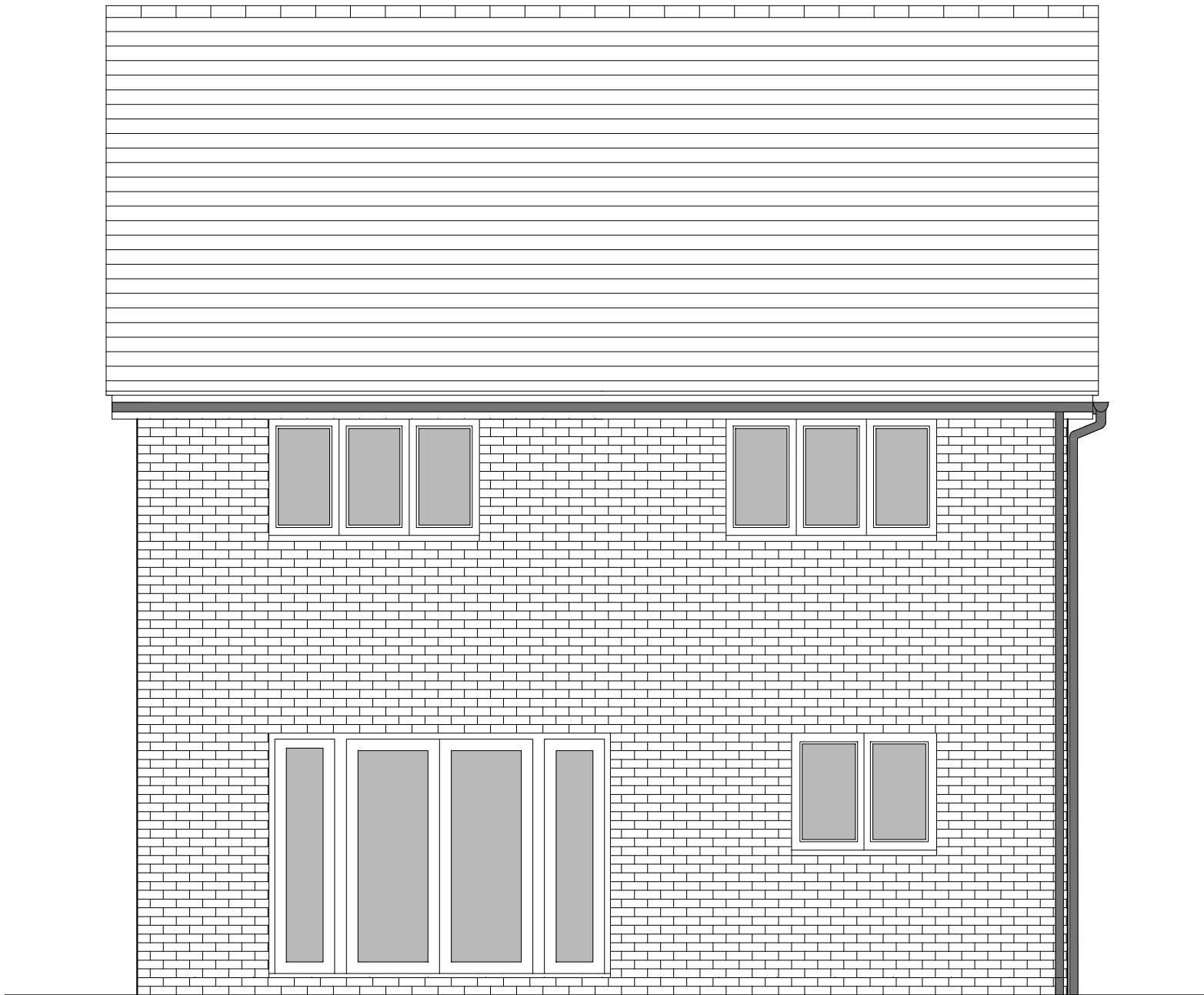
PHASE 4 THE LANDINGS, FORD, WEST SUSSEX
PROPOSED HOUSETYPE ELEVATIONS - HT "461" VARIANT "V3"



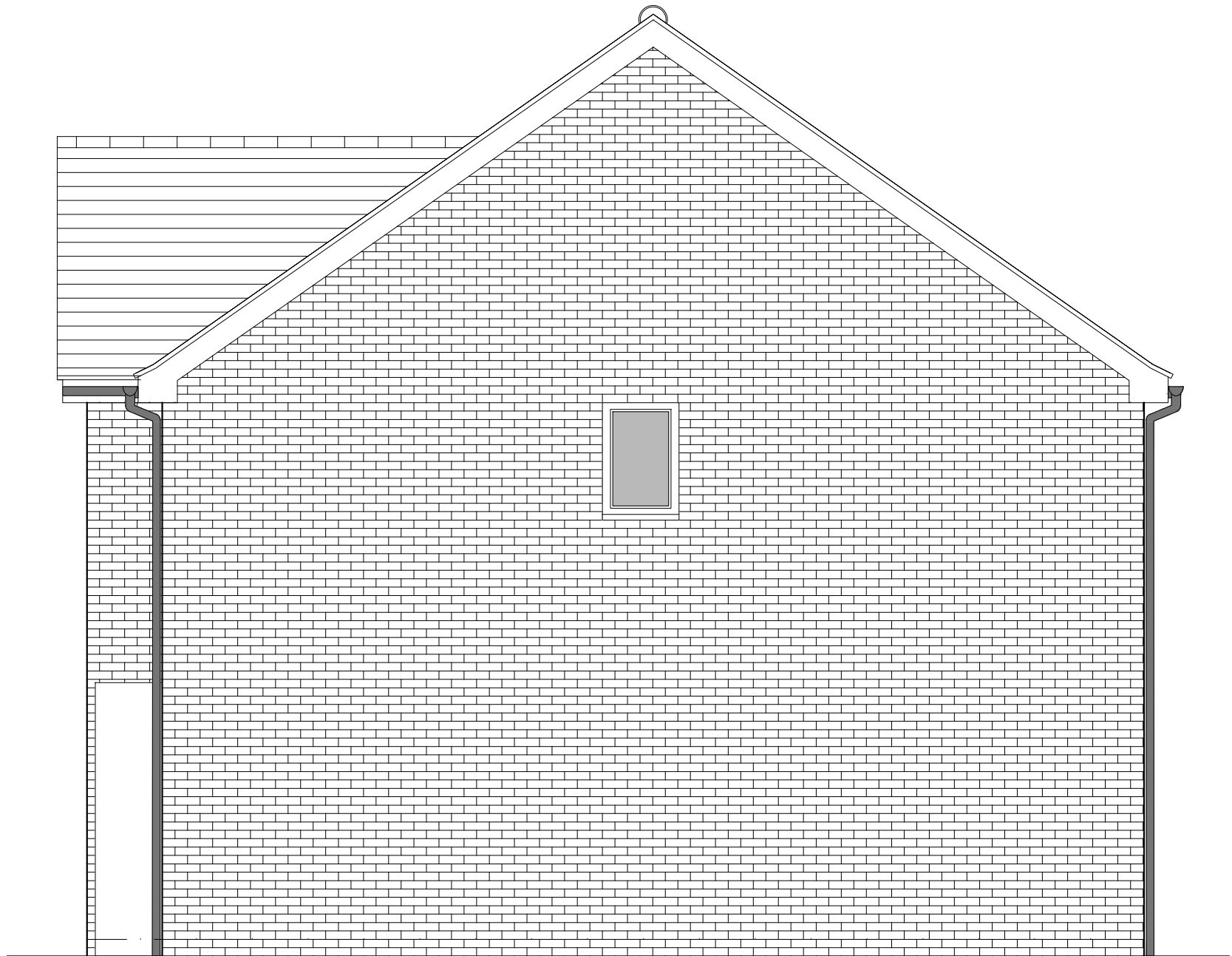
FRONT ELEVATION



SIDE ELEVATION 1



REAR ELEVATION



SIDE ELEVATION 2

HOUSETYPE VARIATIONS		
PLOT NUMBERS:	AS DRAWN	- 23
	HANDED	- 24
MATERIALS:	WALLS	- BRICK
	WALLS (TREATMENT)	-
	FENESTRATION	- UPVC
	OBSCURE WINDOWS	- BATHROOMS & ENSUITES
	EXTERNAL DOORS	- UPVC
	OBSCURE DOORS	-
	ROOF	- TILE
	GUTTERING & DOWNPIPES	- UPVC
	FASCIA & SOFFITS	- UPVC
WINDOW OMISSION*:	PLOT(S)	- N/A
AREA OF UNIT (GIA):	120.5sqm	129sqft
B. REGS PART M:	M4(2)	
NDSS COMPLIANT:	YES	
CHARACTER AREA:	RYEBANK PARK	

PLEASE SEE ACCOMMODATION SCHEDULE
FOR PLOT SPECIFIC PART M CATEGORY

B	10.12.24	Plot numbers adjusted to suit the new Layout	YC
A	15.08.24	Adapted To Suit Material Plan Changes	CLP
Rev	Date	Amendment	Initials

Project:
PHASE 4 THE LANDINGS
FORD, WEST SUSSEX

Client: VISTRY SOUTH EAST

Drawing:
PROPOSED HOUSETYPE ELEVATIONS
HT - "461" VARIANT "V3"

Drawing no: 22.1706.4855 Rev: B

Scale@A1: 1:50 Date: AUG 24 Drawn: JC/CH Checked: YC



Disclaimer: © FINC Architects Limited holds the copyright to all the information contained within this document and their written consent must be obtained before copying or using the data other than for the purpose it was originally supplied.

All dimensions and measurements to be checked on site.
Do not scale from this drawing. This drawing is to be printed in colour.

PLANNING ISSUE

