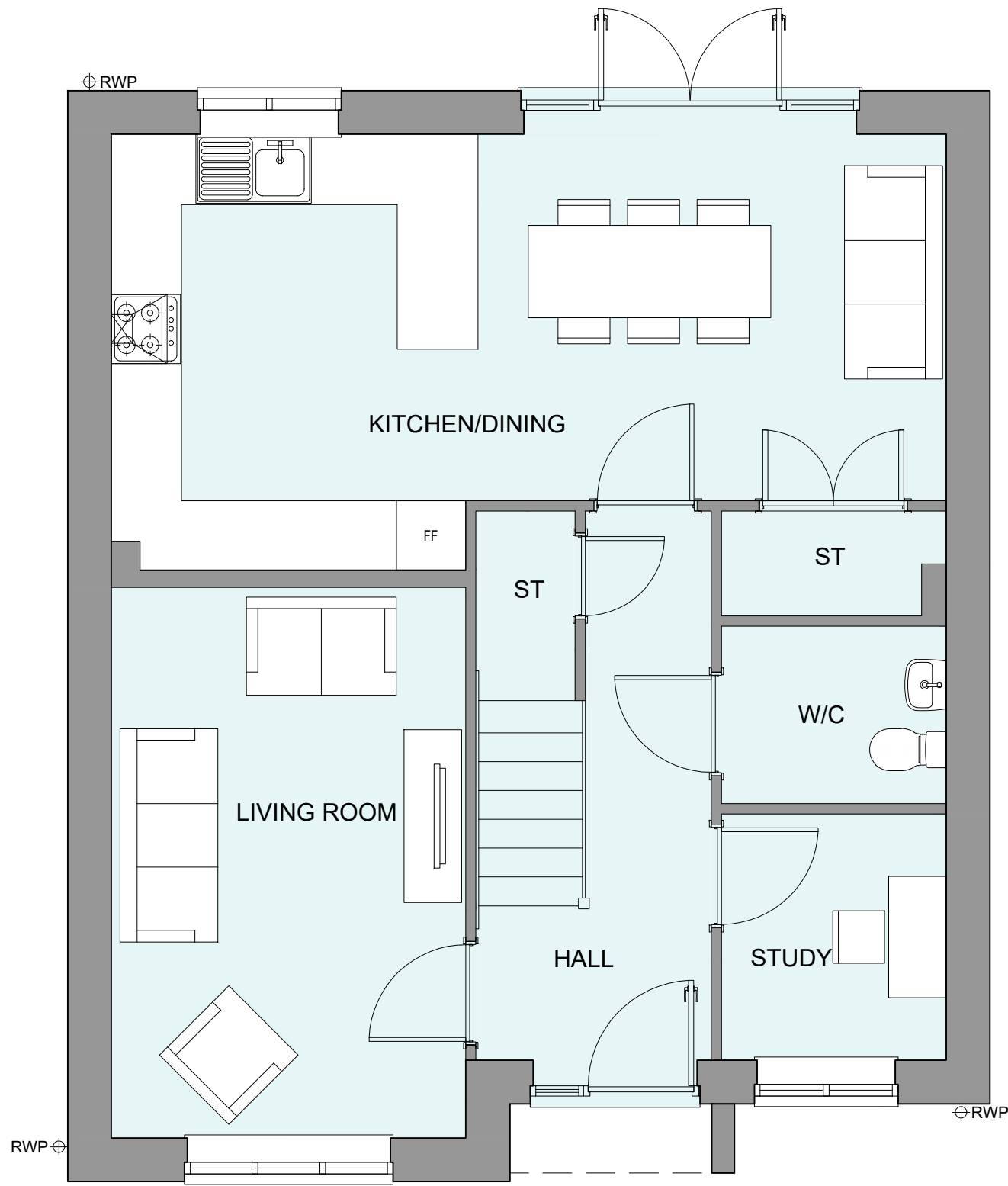


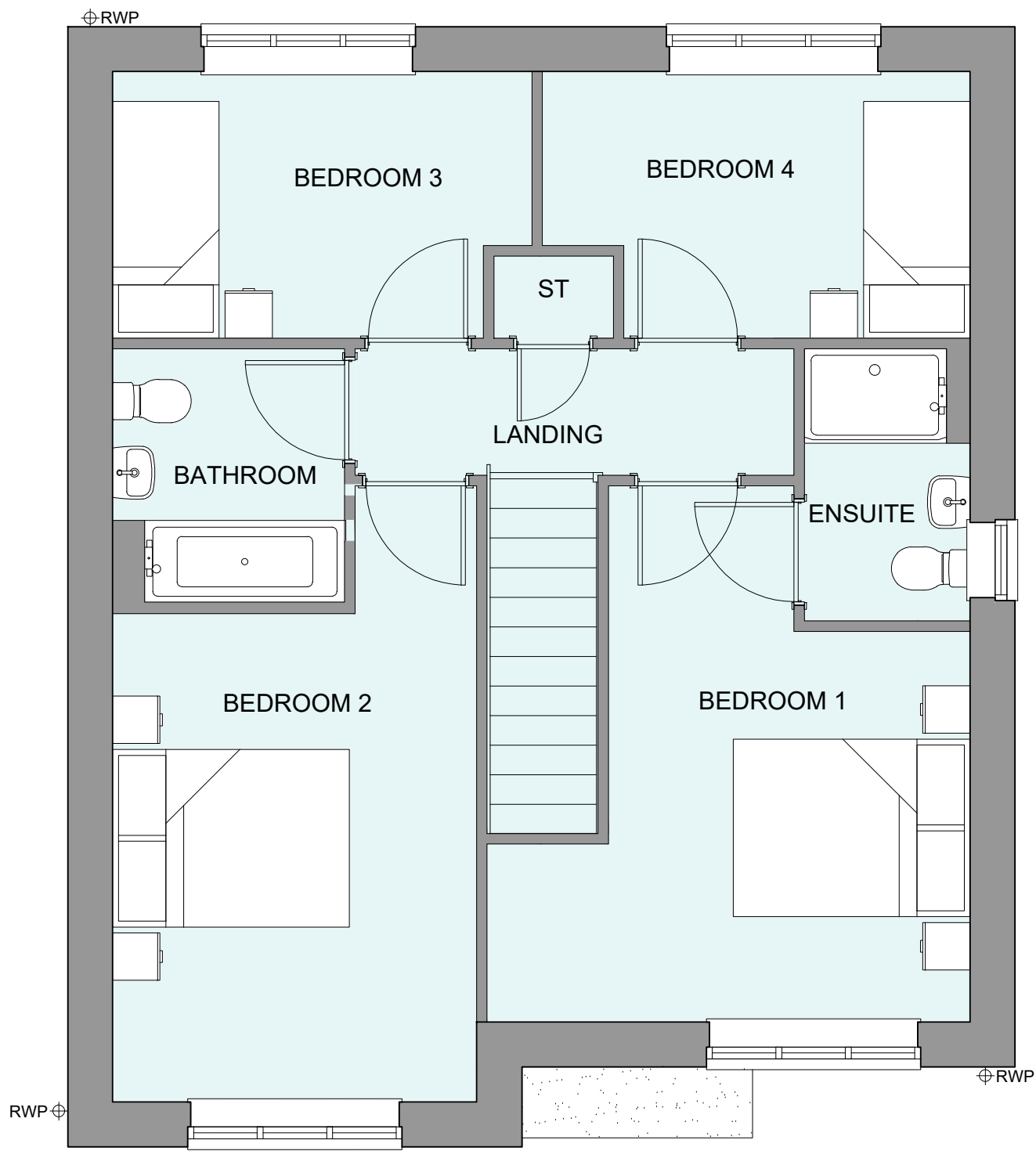
PHASE 4 THE LANDINGS, FORD, WEST SUSSEX
PROPOSED HOUSETYPE PLANS - HT "461" VARIANT "V3"

HOUSETYPE VARIATIONS		
PLOT NUMBERS:	AS DRAWN	- 23
	HANDED	- 24
MATERIALS:	WALLS	- BRICK
	WALLS (TREATMENT)	-
	FENESTRATION	- UPVC
	OBSOLETE WINDOWS	- BATHROOMS & ENSUITES
	EXTERNAL DOORS	- UPVC
	OBSOLETE DOORS	-
	ROOF	- TILE
WINDOW OMISSION*:	GUTTERING & DOWNPIPES	- UPVC
	FASCIA & SOFFITS	- UPVC
AREA OF UNIT (GIA):	PLOT(S)	- N/A
	120.5sqm	1297sqft
B. REGS PART M:		
M4(2)		
NDSS COMPLIANT:		
YES		
CHARACTER AREA:		
RYEBANK PARK		

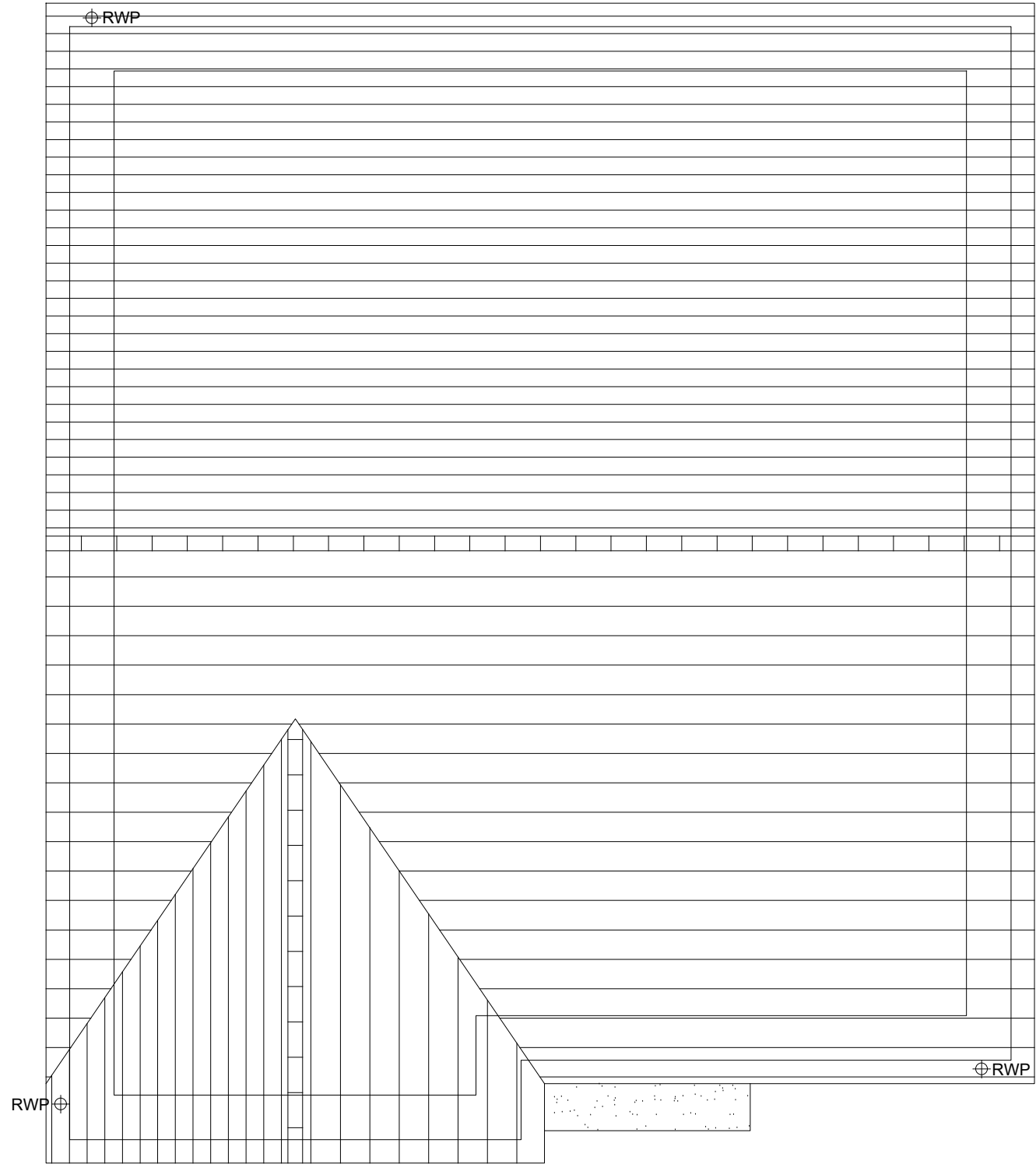
PLEASE SEE ACCOMMODATION SCHEDULE
FOR PLOT SPECIFIC PART M CATEGORY



GROUND FLOOR PLAN



FIRST FLOOR PLAN



ROOF PLAN



B	10.12.24	Plot numbers adjusted to suit the new Layout	YC
A	15.08.24	Adapted To Suit Material Plan Changes	CLP
Rev	Date	Amendment	Initials

Project:
PHASE 4 THE LANDINGS
FORD, WEST SUSSEX

Client:
VISTRY SOUTH EAST

Drawing:
PROPOSED HOUSETYPE PLANS
HT - "461" VARIANT "V3"

Drawing no: 22.1706.4854 Rev: B

Scale@A1: 1:50 Date: AUG 24 Drawn: JC/CH Checked: YC

finc

61-63 New London Road | Chelmsford | Essex | CM2 0ND
T: +44 (0)1245 933988
W: www.fincarchitects.com
E: company@fincarchitects.com

Disclaimers: © Finc Architects Limited holds the copyright to all the information contained within this document and their written consent must be obtained before copying or using the data other than for the purpose it was originally supplied.
All dimensions and measurements to be checked on site.
Do not scale from this drawing. This drawing is to be printed in colour.

PLANNING ISSUE