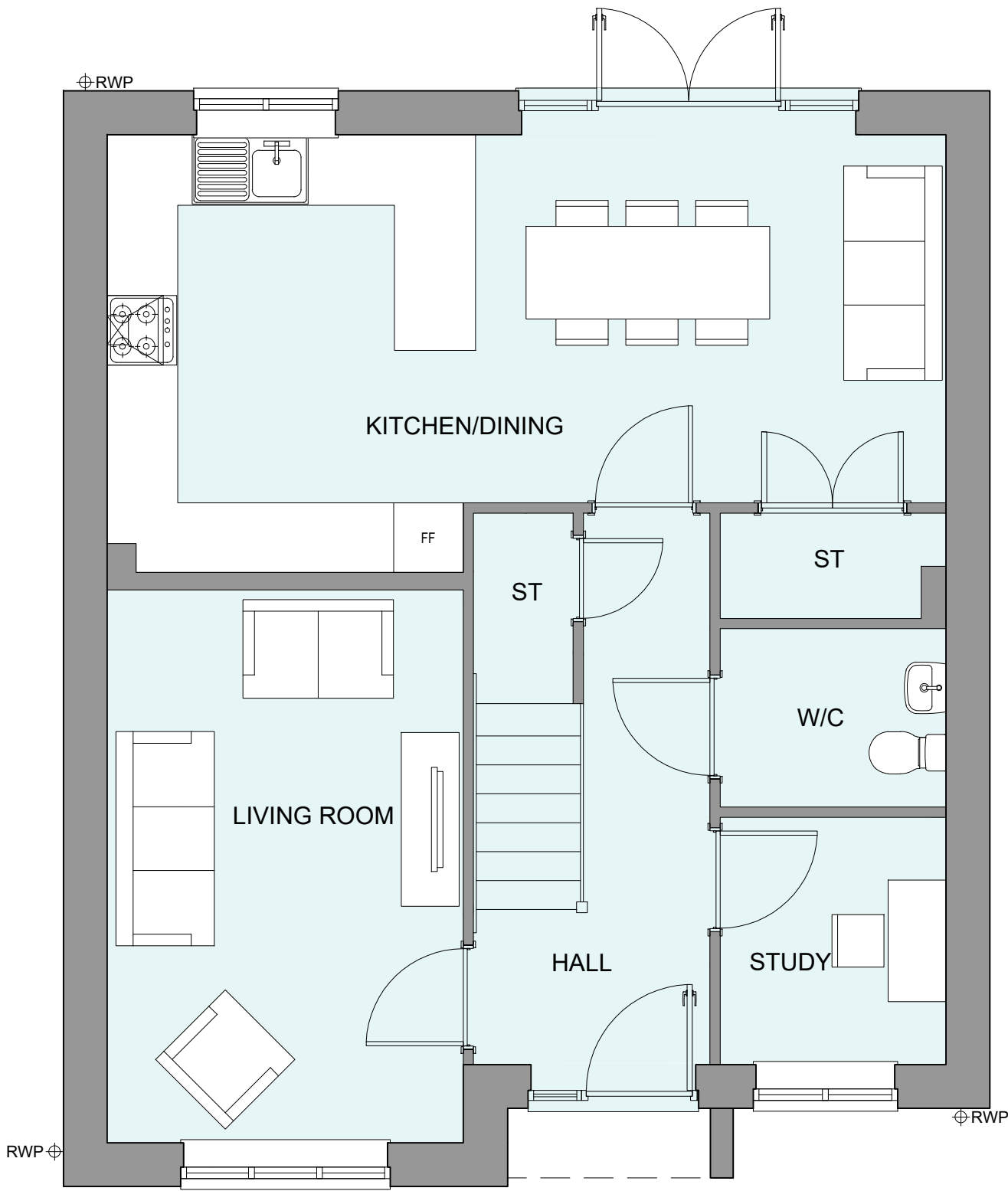


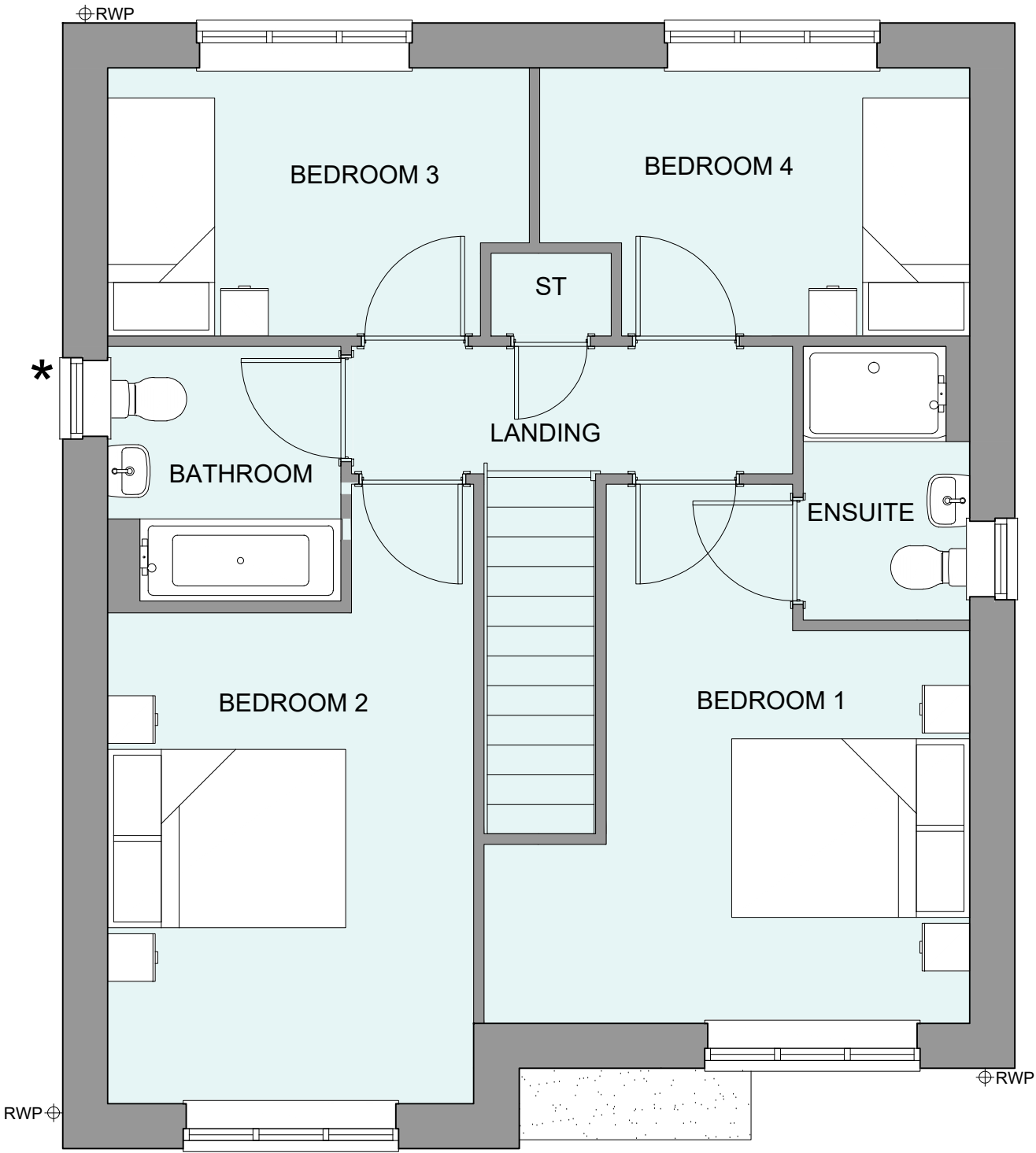
PHASE 4 THE LANDINGS, FORD, WEST SUSSEX
PROPOSED HOUSETYPE PLANS - HT "461" VARIANT "V2"

HOUSETYPE VARIATIONS		
PLOT NUMBERS:	AS DRAWN	- 300,
	HANDED	- 301, 307,
MATERIALS:	WALLS	- BRICK
	WALLS (TREATMENT)	- RENDER
	FENESTRATION	- UPVC
	OBSOLETE WINDOWS	- BATHROOMS & ENSUITES
	EXTERNAL DOORS	- UPVC
	OBSOLETE DOORS	-
	ROOF	- TILE
WINDOW OMISSION*:	GUTTERING & DOWNPIPES	- UPVC
	FASCIA & SOFFITS	- UPVC
WINDOW OMISSION*:	PLOT(S)	- 300, 301, 307
AREA OF UNIT (GIA):	120.5sqm	1297sqft
B. REGS PART M:	M4(2)	
NDSS COMPLIANT:	YES	
CHARACTER AREA:	RUNWAY PARK	

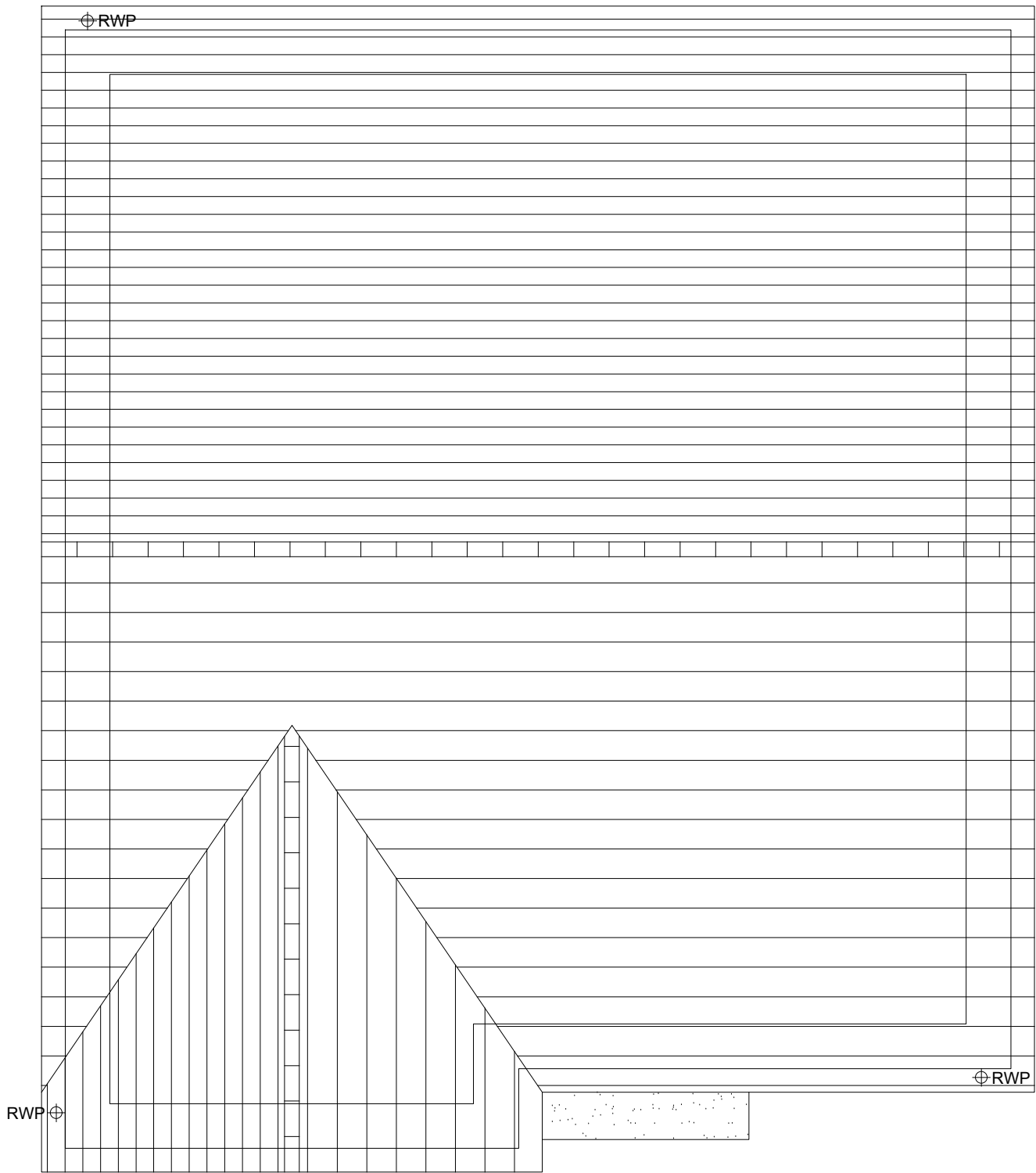
PLEASE SEE ACCOMMODATION SCHEDULE
FOR PLOT SPECIFIC PART M CATEGORY



GROUND FLOOR PLAN



FIRST FLOOR PLAN



ROOF PLAN



A	10.12.24	Plot numbers adjusted to suit the new Layout	YC
Rev	Date	Amendment	Initials
Project: PHASE 4 THE LANDINGS FORD, WEST SUSSEX			
Client: VISTRY SOUTH EAST			
Drawing: PROPOSED HOUSETYPE PLANS HT - "461" VARIANT "V2"			
Drawing no:	22.1706.4852	Rev:	A
Scale@A1:	1:50	Date:	AUG 24
Drawn:	JC/CH	Checked:	YC

finc

61-63 New London Road | Chelmsford | Essex | CM2 0ND
T: +44 (0)1245 933988
W: www.fincarchitects.com
E: company@fincarchitects.com

© Finc Architects Limited holds the copyright to all the information contained within this document and their written consent must be obtained before copying or using the data other than for the purpose it was originally supplied.
All dimensions and measurements to be checked on site.
Do not scale from this drawing. This drawing is to be printed in colour.

PLANNING ISSUE