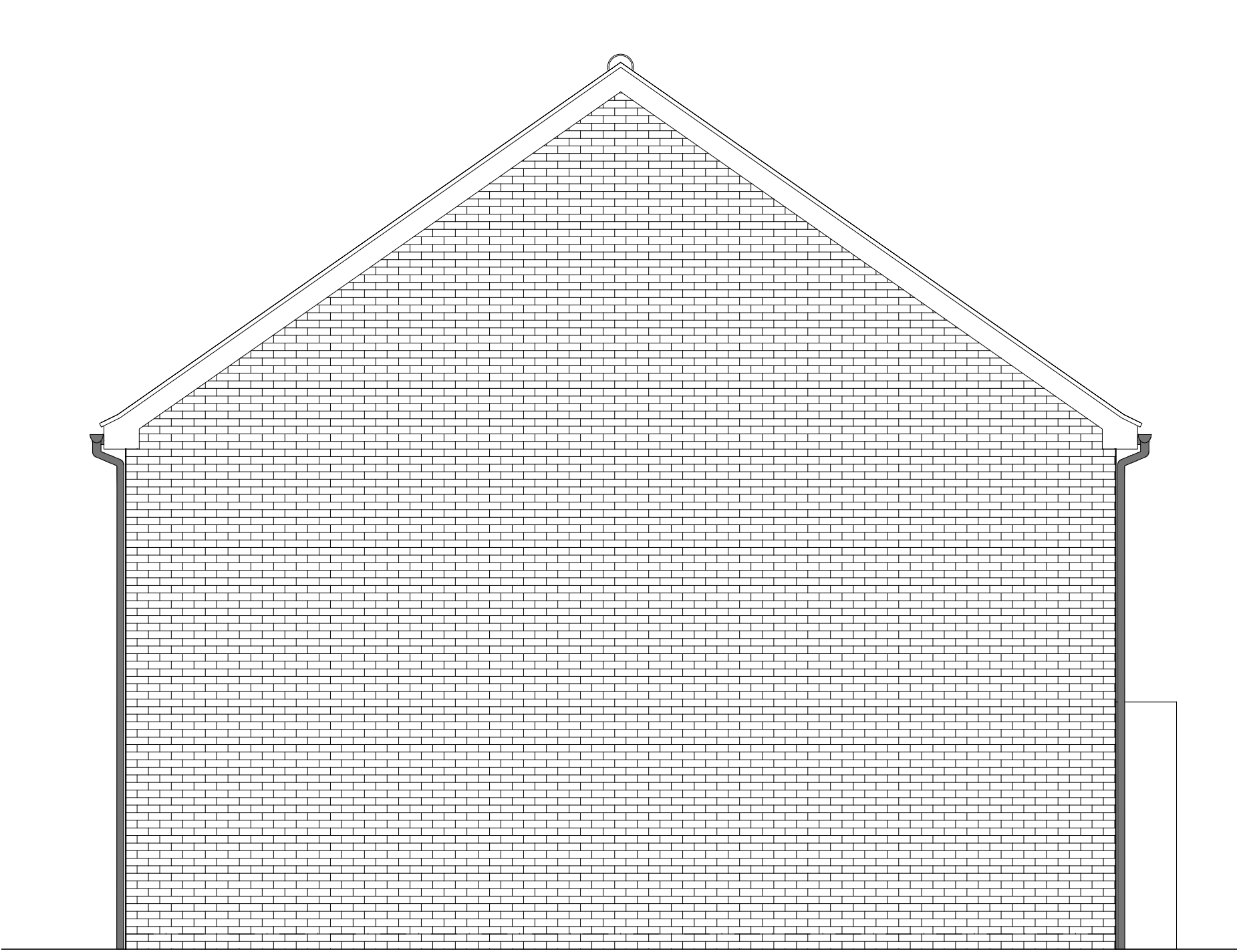


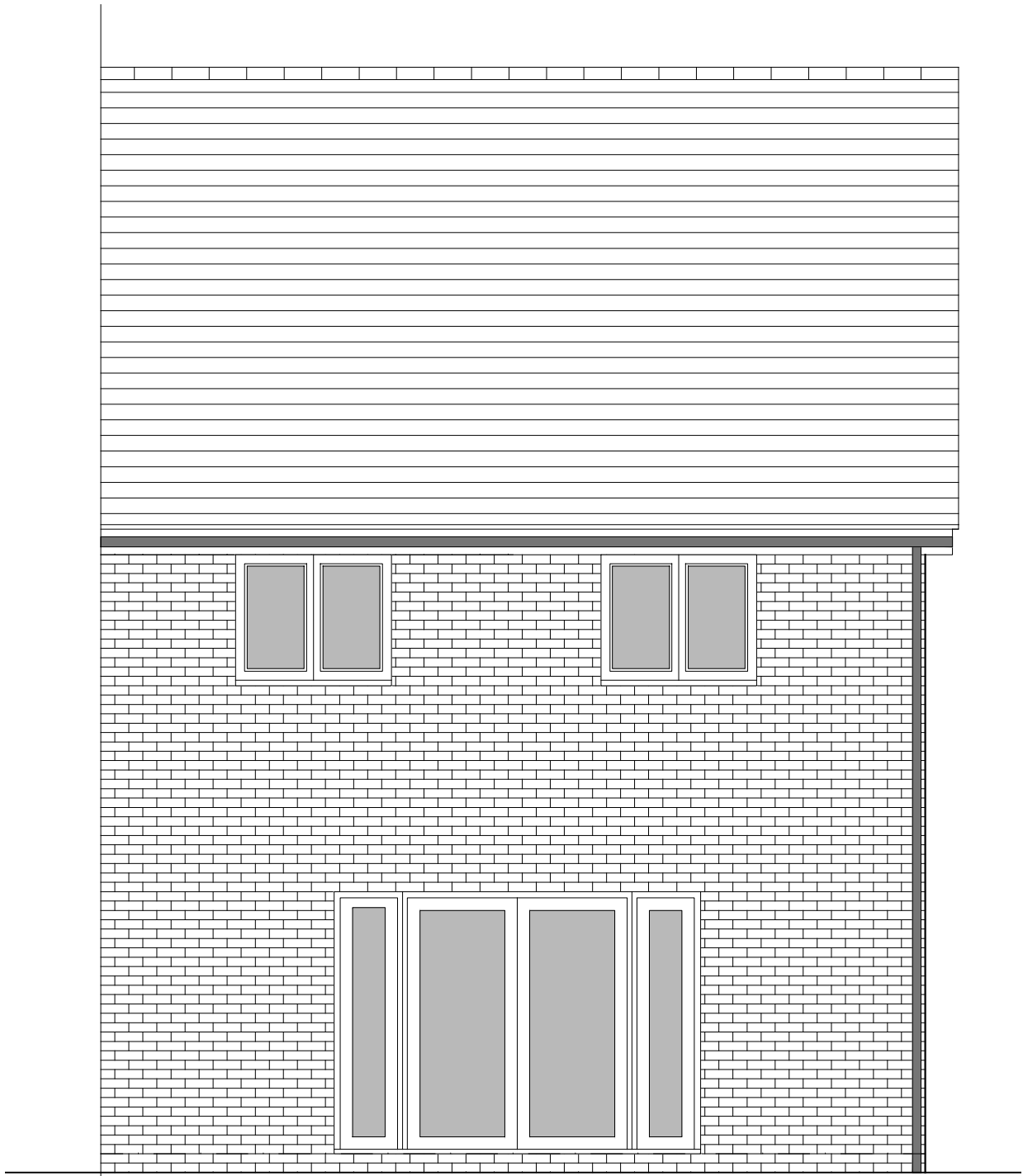
PHASE 4 THE LANDINGS, FORD, WEST SUSSEX
PROPOSED HOUSETYPE PLANS & ELEVATIONS - HT "451" VARIANT "V2"



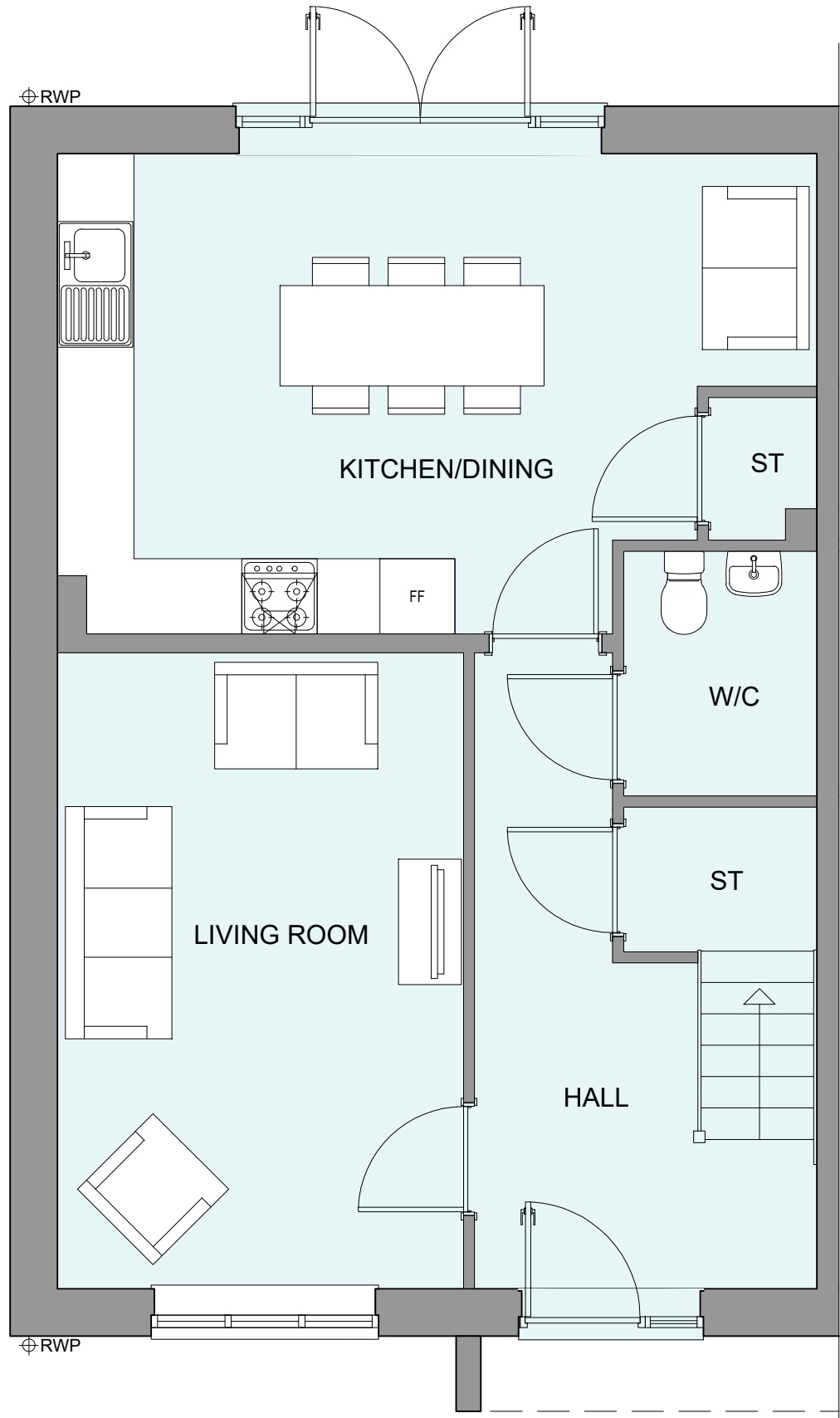
FRONT ELEVATION



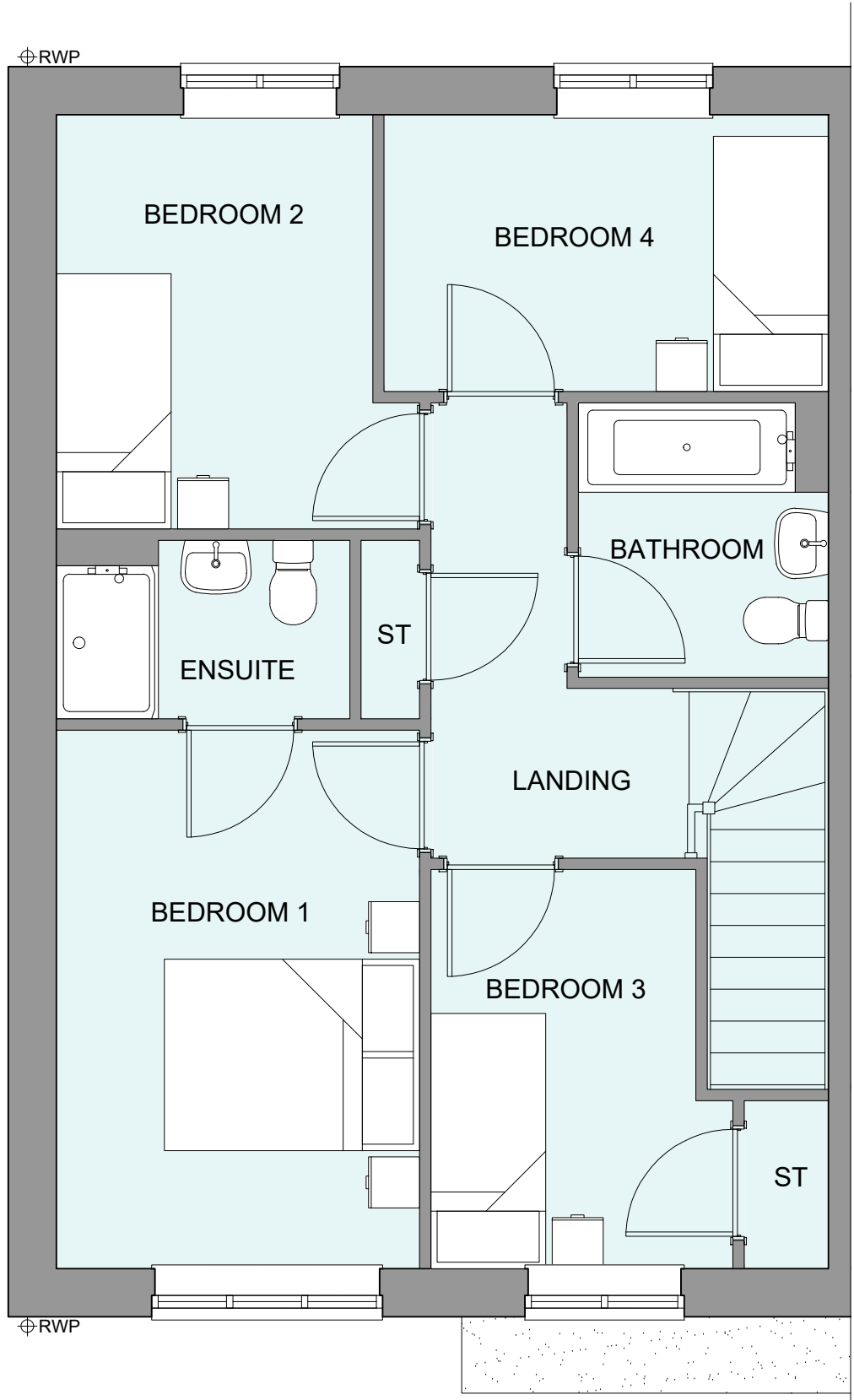
SIDE ELEVATION 1



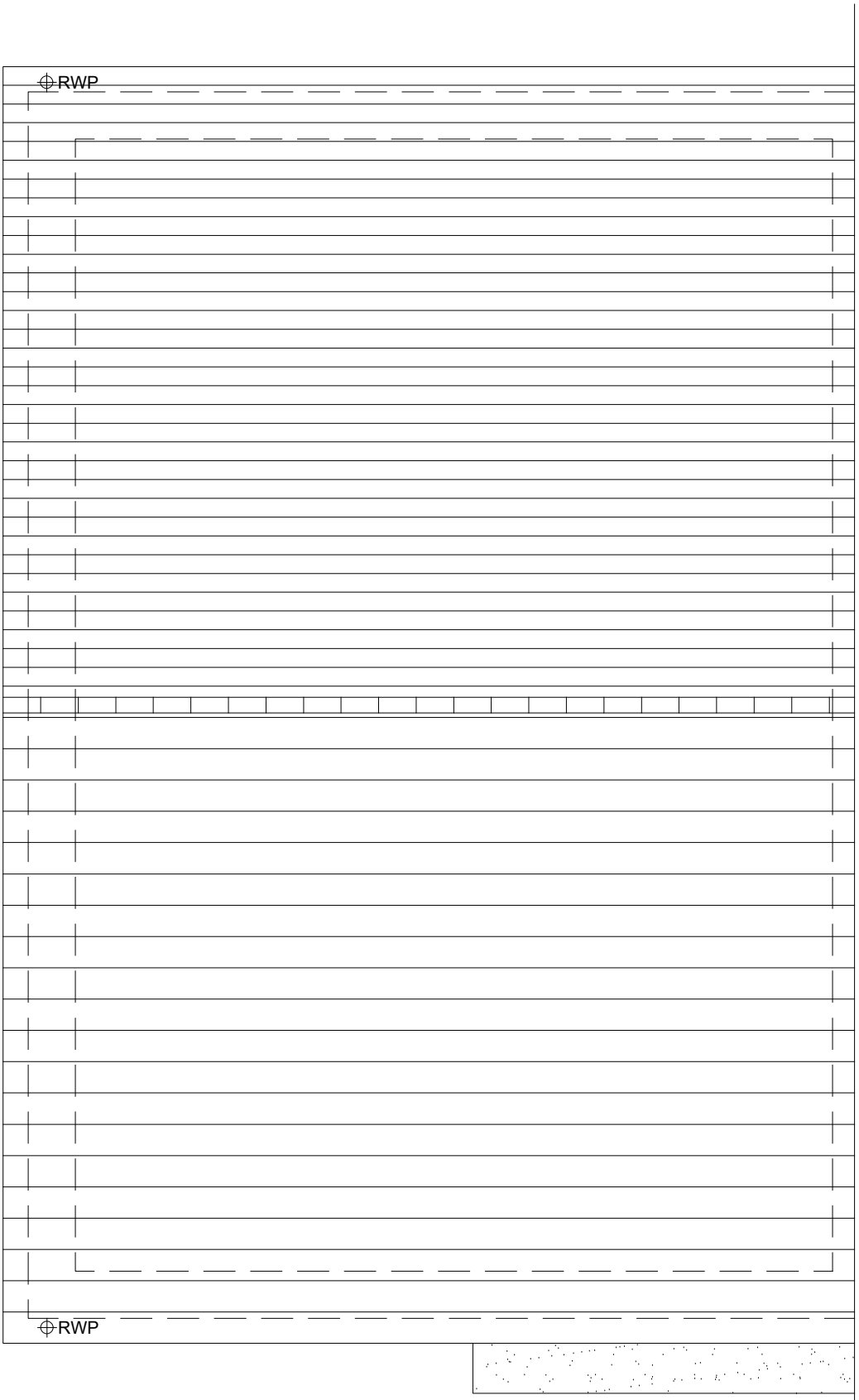
REAR ELEVATION



GROUND FLOOR PLAN



FIRST FLOOR PLAN



ROOF PLAN

HOUSETYPE VARIATIONS		
PLOT NUMBERS:	AS DRAWN	- 150
	HANDED	- 151
MATERIALS:	WALLS	- BRICK
	WALLS (TREATMENT)	-
	FENESTRATION	- UPVC
	OBSURE WINDOWS	- UPVC
	EXTERNAL DOORS	- UPVC
	OBSURE DOORS	-
	ROOF	- TILE
WINDOW OMISSION*:	PLOT(S)	- N/A
	AREA OF UNIT (GIA):	109.4sqm 1178sqft
B. REGS PART M:		
M4(2)		
NDSS COMPLIANT:		
YES		
CHARACTER AREA:		
RUNWAY PARK		

PLEASE SEE ACCOMMODATION SCHEDULE
FOR PLOT SPECIFIC PART M CATEGORY



A	10.12.24	Plot numbers adjusted to suit the new layout	YC
Rev	Date	Amendment	Initials
Project:			
PHASE 4 THE LANDINGS			
FORD, WEST SUSSEX			
Client:			
VISTRY SOUTH EAST			
Drawing:			
PROPOSED HOUSETYPE PLANS & ELEVATIONS			
HT - "451" VARIANT "V2"			
Drawing no:			
22.1706.4802			
Rev:			
A			
Scale@A1: 1:50			
Date:	AUG 24	Drawn: JC/CH	Checked: YC

finc Architects Ltd
61-63 New London Road | Chelmsford | Essex | CM2 0ND
T: +44 (0)1245 933988
W: www.fincarchitects.com
E: company@fincarchitects.com

Disclaimers:
© Finc Architects Limited holds the copyright to all the information contained within this document and their written consent must be obtained before copying or using the data other than for the purpose it was originally supplied.
All dimensions and measurements to be checked on site.
Do not scale from this drawing. This drawing is to be printed in colour.

PLANNING ISSUE

APRIL DISTRICT COUNCIL FTS/2025