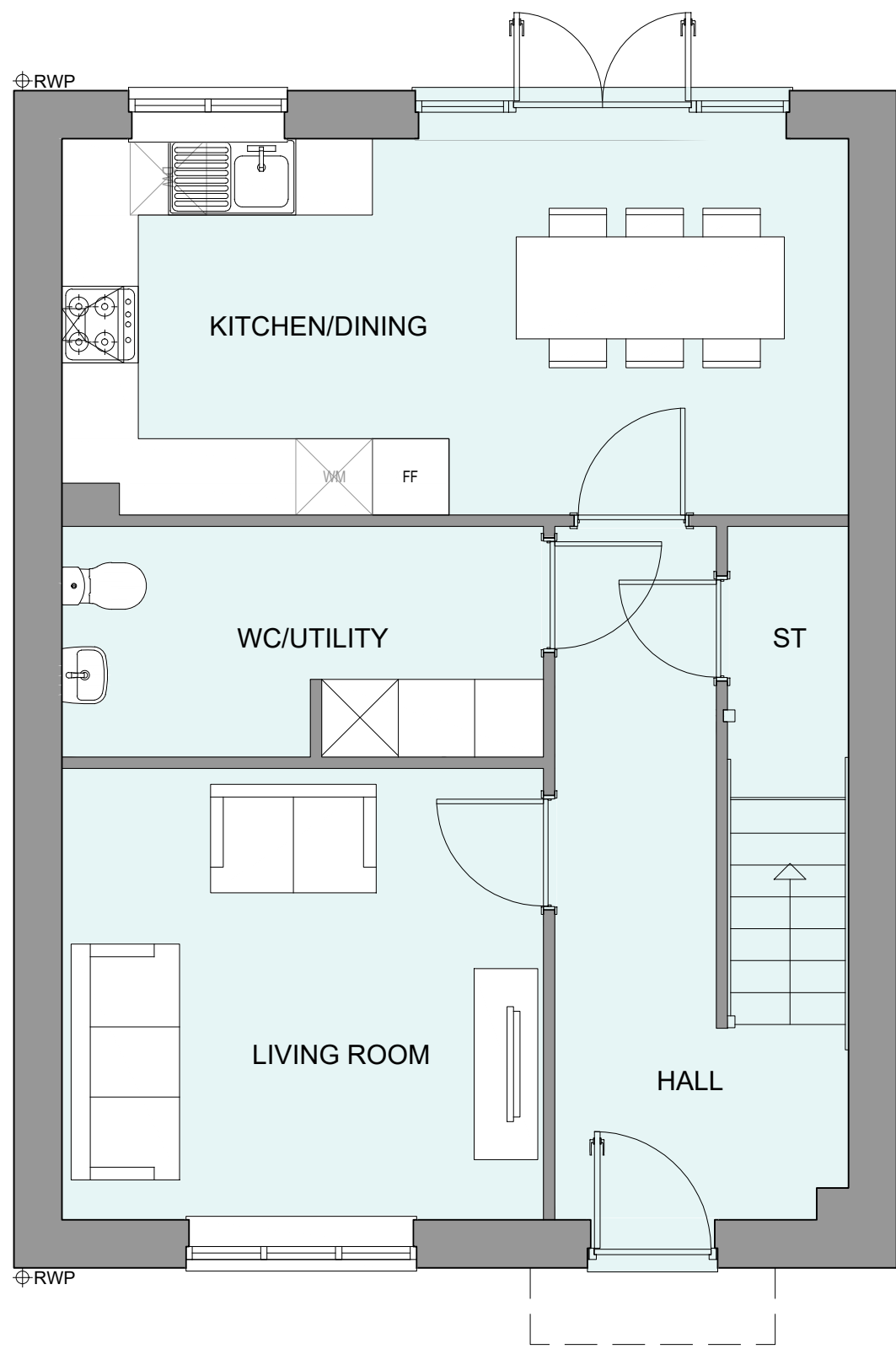
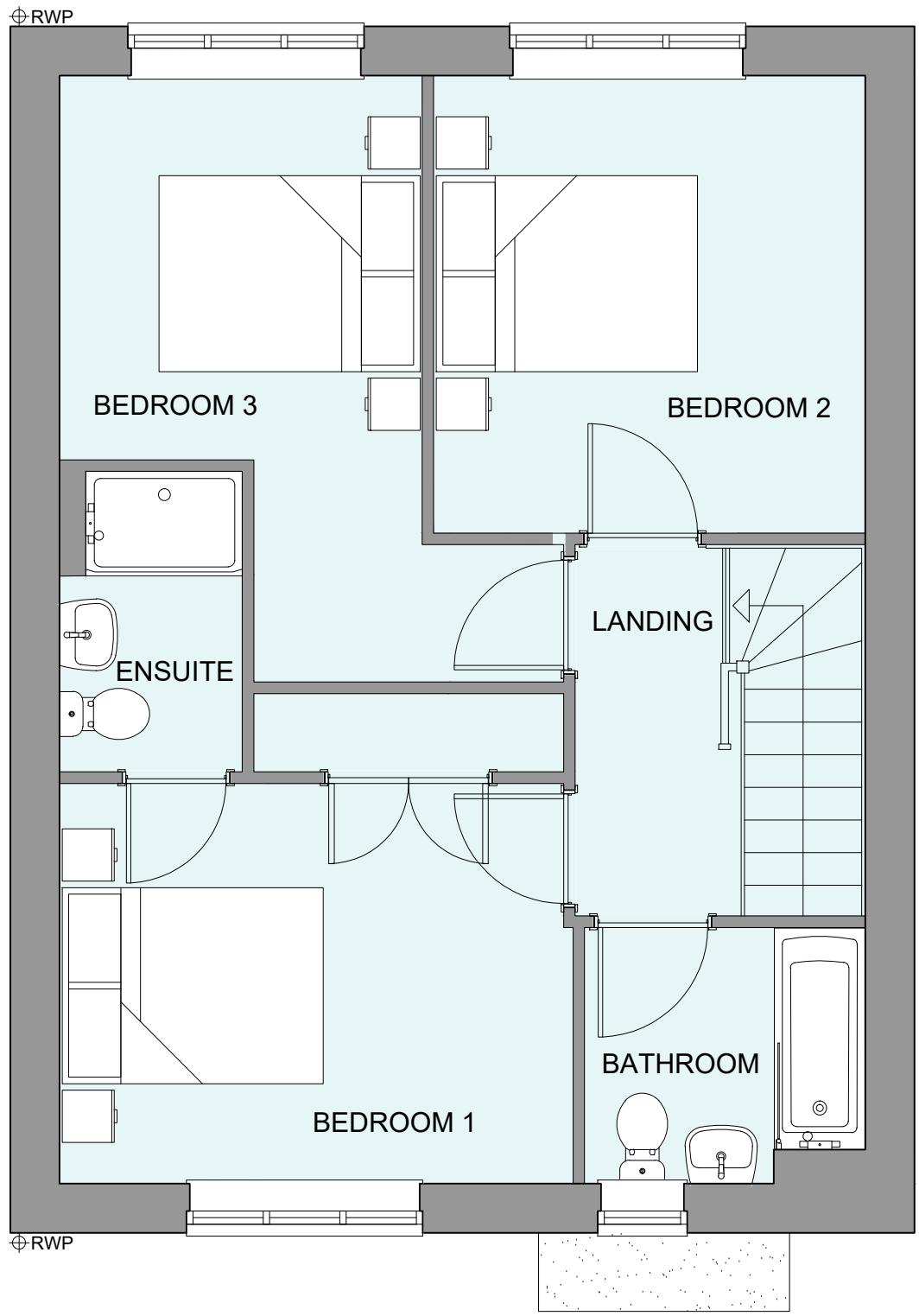


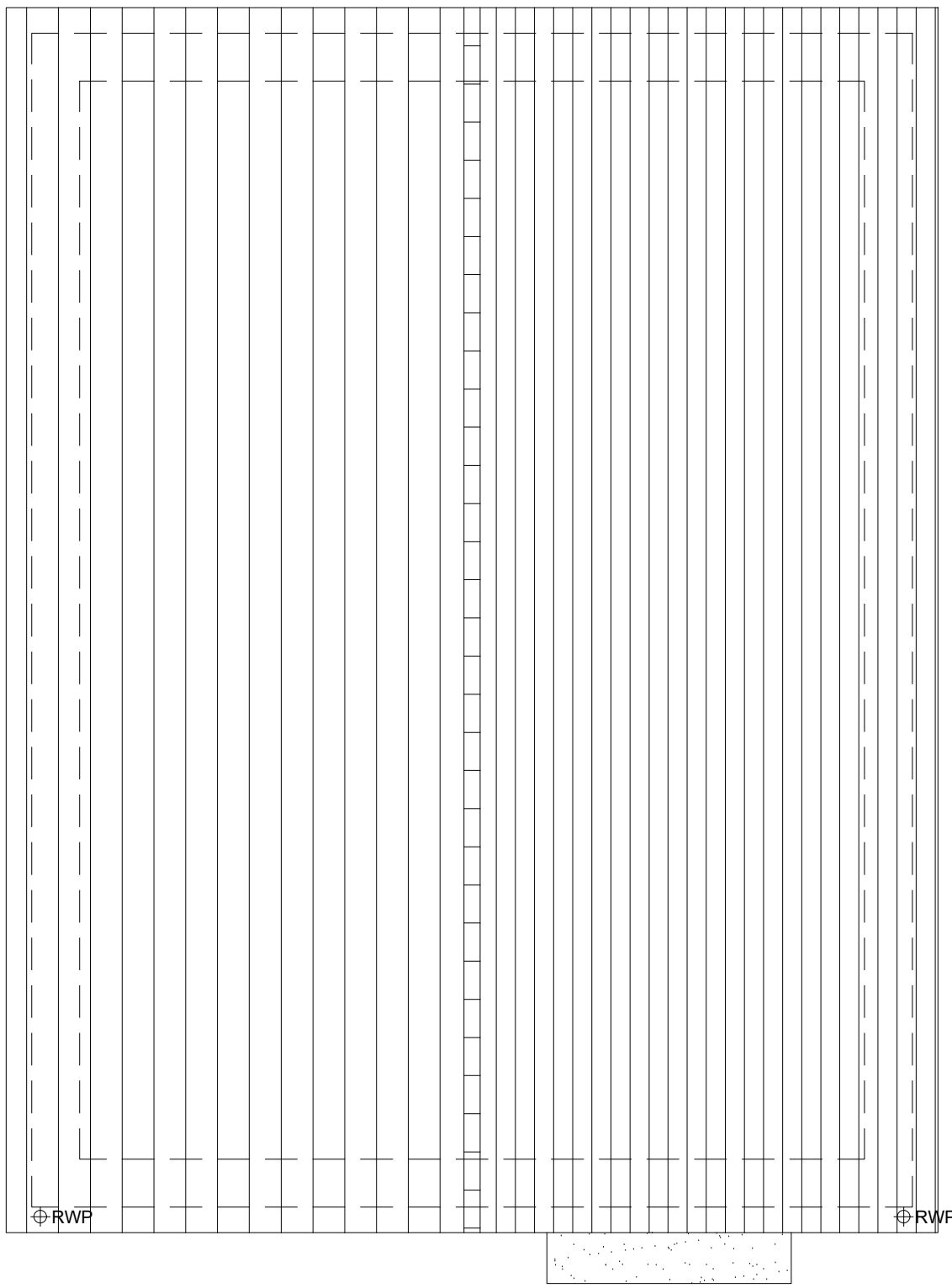
PHASE 4 THE LANDINGS, FORD, WEST SUSSEX  
PROPOSED HOUSETYPE PLANS - HT "361" VARIANT "V3"



GROUND FLOOR PLAN



FIRST FLOOR PLAN



ROOF PLAN

HOUSETYPE VARIATIONS		
PLOT NUMBERS:	AS DRAWN	-
	HANDED	- 333
MATERIALS:	WALLS	- BRICK
	WALLS (TREATMENT)	- TILE HANGING
	FENESTRATION	- UPVC
	OBSCURER WINDOWS	- BATHROOMS
	EXTERNAL DOORS	- UPVC
	OBSCURER DOORS	-
	ROOF	- TILE
	GUTTERING & DOWNPIPES	- UPVC
	FASCIA & SOFFITS	- UPVC
WINDOW OMISSION*:	PLOT(S)	- N/A
AREA OF UNIT (GIA):	104.7sqm	1126sqft
B. REGS PART M:	M4(2)	
NDSS COMPLIANT:	YES	
CHARACTER AREA:	RUNWAY PARK	

PLEASE SEE ACCOMMODATION SCHEDULE  
FOR PLOT SPECIFIC PART M CATEGORY



B	10.12.24	House Type changed to gable front	YC
A	21.08.24	Adjusted rwp positions	JC
Rev	Date	Amendment	Initials
Project:			
PHASE 4 THE LANDINGS			
FORD, WEST SUSSEX			
Client:			
VISTRY SOUTH EAST			
Drawing:			
PROPOSED HOUSETYPE PLANS			
HT - "361" VARIANT "V3"			
Drawing no:		Rev:	
22.1706.4703		B	
Scale@A1:	1:50	Date:	AUG 24
Drawn:	JC	Checked:	CH

**finc**

61-63 New London Road | Chelmsford | Essex | CM2 0ND  
T: +44 (0)1245 933988  
W: [www.fincarchitects.com](http://www.fincarchitects.com)  
E: [company@fincarchitects.com](mailto:company@fincarchitects.com)

Disclaimers: © Finc Architects Limited holds the copyright to all the information contained within this document and their written consent must be obtained before copying or using the data other than for the purpose it was originally supplied.  
All dimensions and measurements to be checked on site.  
Do not scale from this drawing. This drawing is to be printed in colour.

PLANNING ISSUE