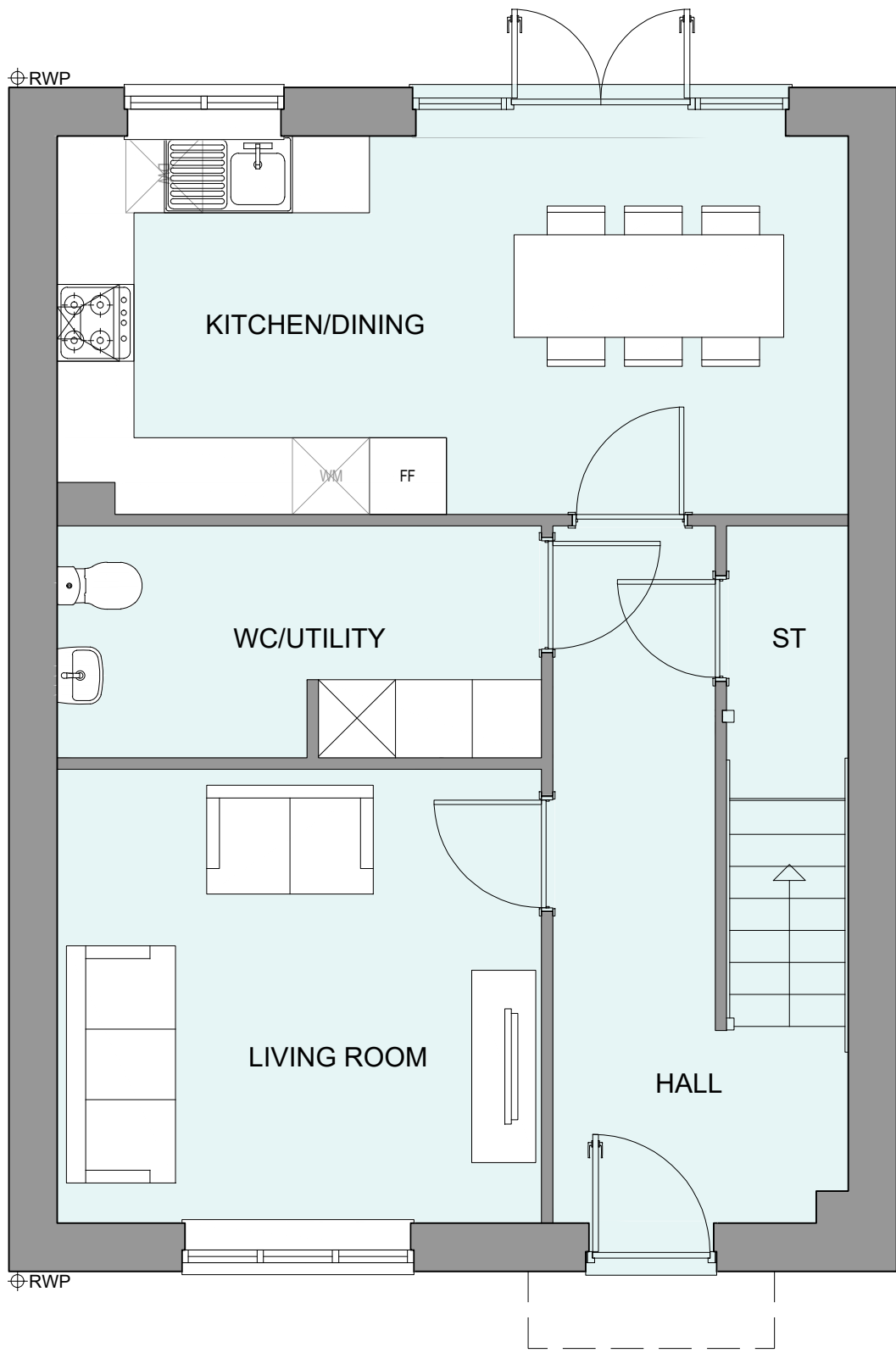


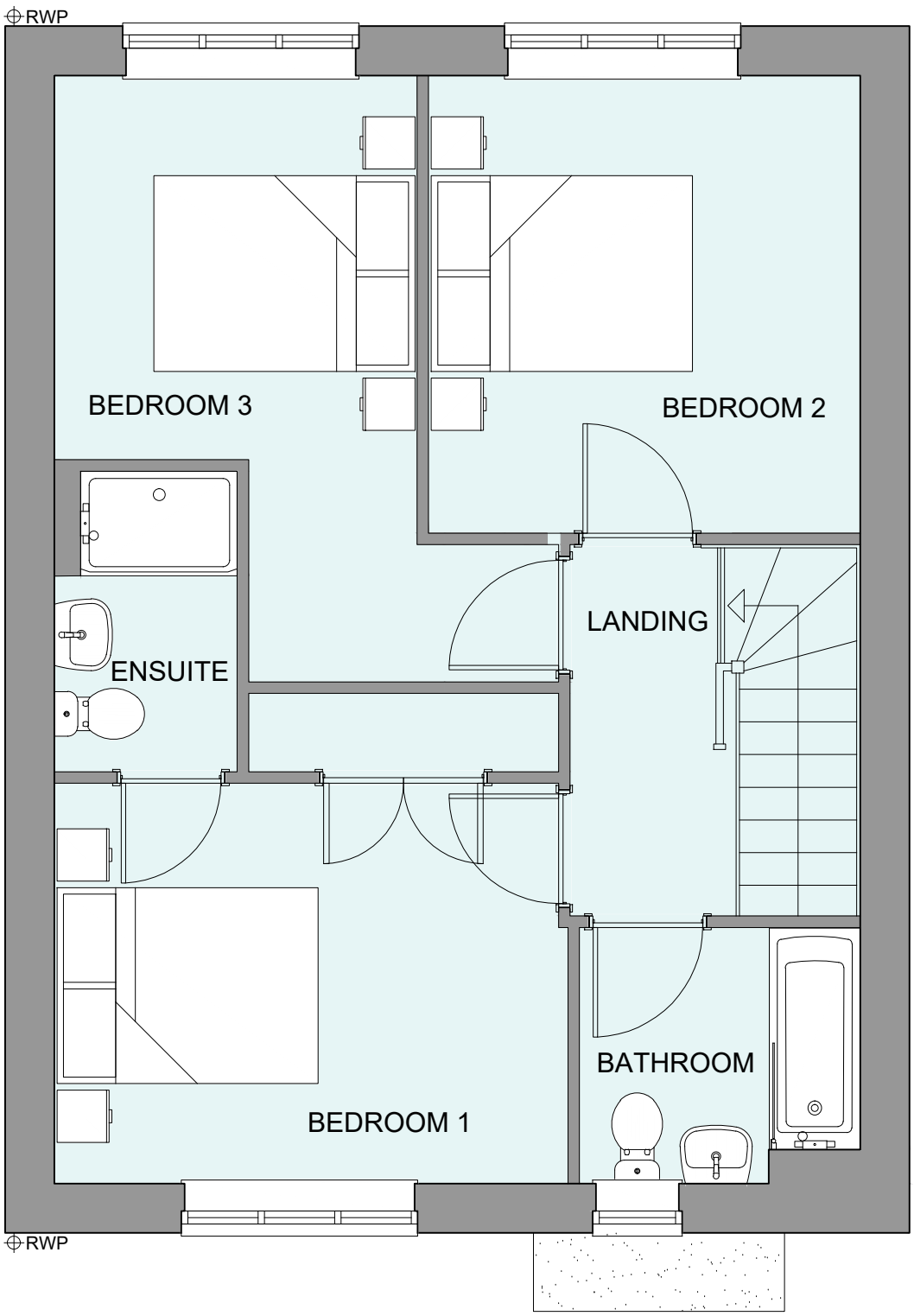
PHASE 4 THE LANDINGS, FORD, WEST SUSSEX
PROPOSED HOUSETYPE PLANS - HT "361" VARIANT "V2"

HOUSETYPE VARIATIONS		
PLOT NUMBERS:	AS DRAWN	- 234,254,322,329,335
	HANDED	- 128,230
MATERIALS:	WALLS	- BRICK
	WALLS (TREATMENT)	-
	FENESTRATION	- UPVC
	OBSCURER WINDOWS	- BATHROOMS
	EXTERNAL DOORS	- UPVC
	OBSCURER DOORS	-
	ROOF	- TILE
WINDOW OMISSION*:	GUTTERING & DOWNPIPES	- UPVC
	FASCIA & SOFFITS	- UPVC
WINDOW OMISSION*:	PLOT(S)	- N/A
	AREA OF UNIT (GIA):	104.7sqm 1126sqft
B. REGS PART M:		
M4(2)		
NDSS COMPLIANT:		
YES		
CHARACTER AREA:		
RUNWAY PARK		

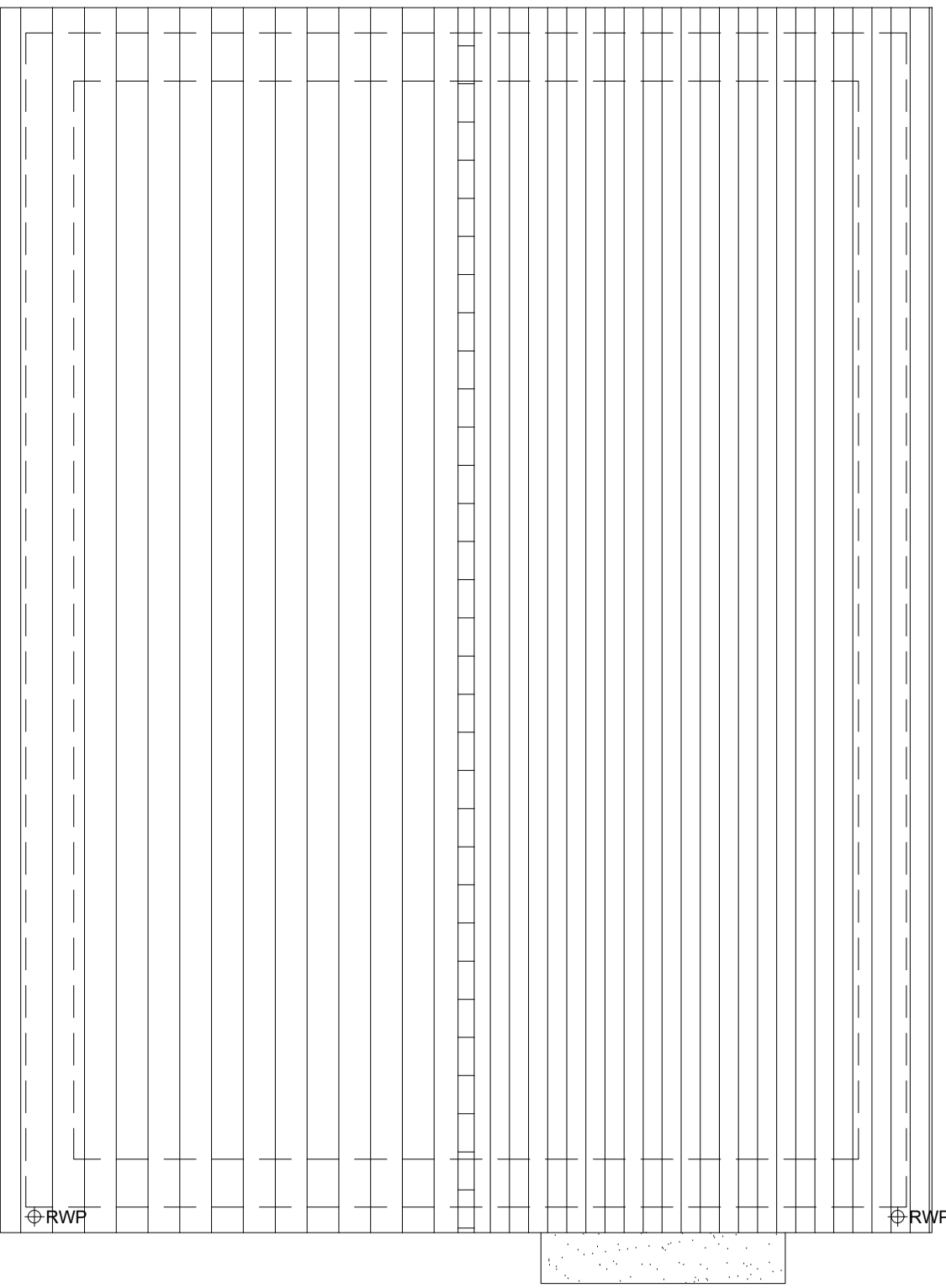
PLEASE SEE ACCOMMODATION SCHEDULE
FOR PLOT SPECIFIC PART M CATEGORY



GROUND FLOOR PLAN



FIRST FLOOR PLAN



ROOF PLAN



A	10.12.24	House type changed to gable front.	YC
Rev	Date	Amendment	Initials
Project:			
PHASE 4 THE LANDINGS			
FORD, WEST SUSSEX			
Client:			
VISTRY SOUTH EAST			
Drawing:			
PROPOSED HOUSETYPE PLANS			
HT - "361" VARIANT "V2"			
Drawing no:			Rev:
22.1706.4701			A
Scale@A1:	1:50	Date:	AUG 24
Drawn:	JC	Checked:	CH

finc	
61-63 New London Road Chelmsford Essex CM2 0ND	
T: +44 (0)1245 933686	
W: www.fincarchitects.com	
E: company@fincarchitects.com	

© Finc Architects Limited holds the copyright to all the information contained within this document and their written consent must be obtained before copying or using the data other than for the purpose it was originally supplied.
All dimensions and measurements to be checked on site.
Do not scale from this drawing. This drawing is to be printed in colour.

PLANNING ISSUE