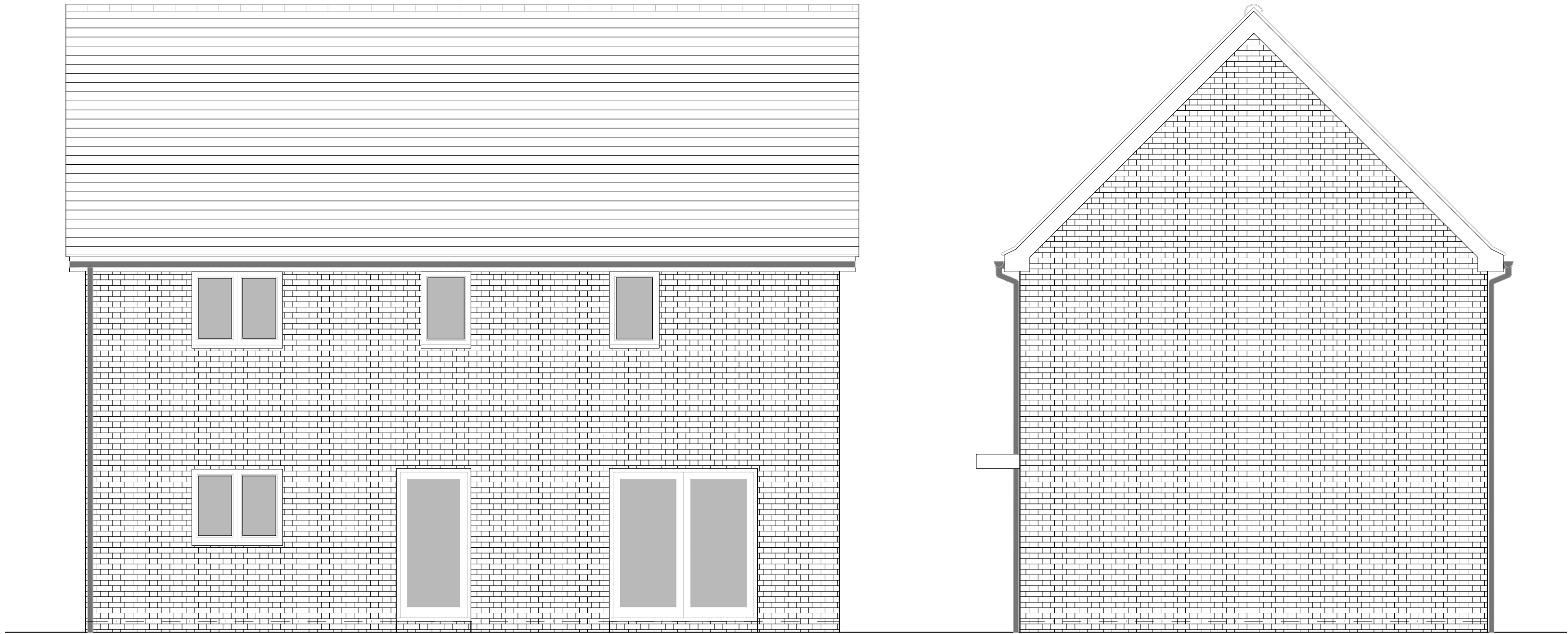


PHASE 4 THE LANDINGS, FORD, WEST SUSSEX
PROPOSED HOUSETYPE ELEVATIONS - HT "355" VARIANT "V10"



FRONT ELEVATION

SIDE ELEVATION 1



REAR ELEVATION

SIDE ELEVATION 2



HOUSETYPE VARIATIONS		
PLOT NUMBERS:	AS DRAWN	-
	HANDED	- 40
MATERIALS:	WALLS	- BRICK
	WALLS (TREATMENT)	- FLINT
	FENESTRATION	- UPVC
	OBSCURSE WINDOWS	- BATHROOMS & ENSUITES
	EXTERNAL DOORS	- UPVC
	OBSCURSE DOORS	- UTILITY ROOM
	ROOF	- TILE
	GUTTERING & DOWNPIPES	- UPVC
	FASCIA & SOFFITS	- UPVC
WINDOW OMISSION*:	PLOT(S)	- N/A
AREA OF UNIT (GIA):	108.9sqm	117.2sqft
B. REGS PART M:	M4(2)	
NDSS COMPLIANT:	YES	
CHARACTER AREA:	RUNWAY	

PLEASE SEE ACCOMMODATION SCHEDULE
FOR PLOT SPECIFIC PART M CATEGORY

A	11.12.24	Plot number adjusted		YC
Rev	Date	Amendment	Initials	
Project:				
PHASE 4 THE LANDINGS				
FORD, WEST SUSSEX				
Client:				
VISTRY SOUTH EAST				
Drawing:				
PROPOSED HOUSETYPE ELEVATIONS				
HT - "355" VARIANT "V10"				
Drawing no:			Rev:	
22.1706.4619			A	
Scale@A1:	1:50	Date:	AUG 24	Drawn: CLP
Checked:		CH		

PLANNING ISSUE

finc **FINC Architects Ltd**
61-63 New London Road | Chelmsford | Essex | CM2 0ND
T: +44 (0)1245 933988
W: www.fincarchitects.com
E: company@fincarchitects.com

Disclaimer: © FINC Architects Limited holds the copyright to all the information contained within this document and their written consent must be obtained before copying or using the data other than for the purpose it was originally supplied.

All dimensions and measurements to be checked on site.
Do not scale from this drawing. This drawing is to be printed in colour.