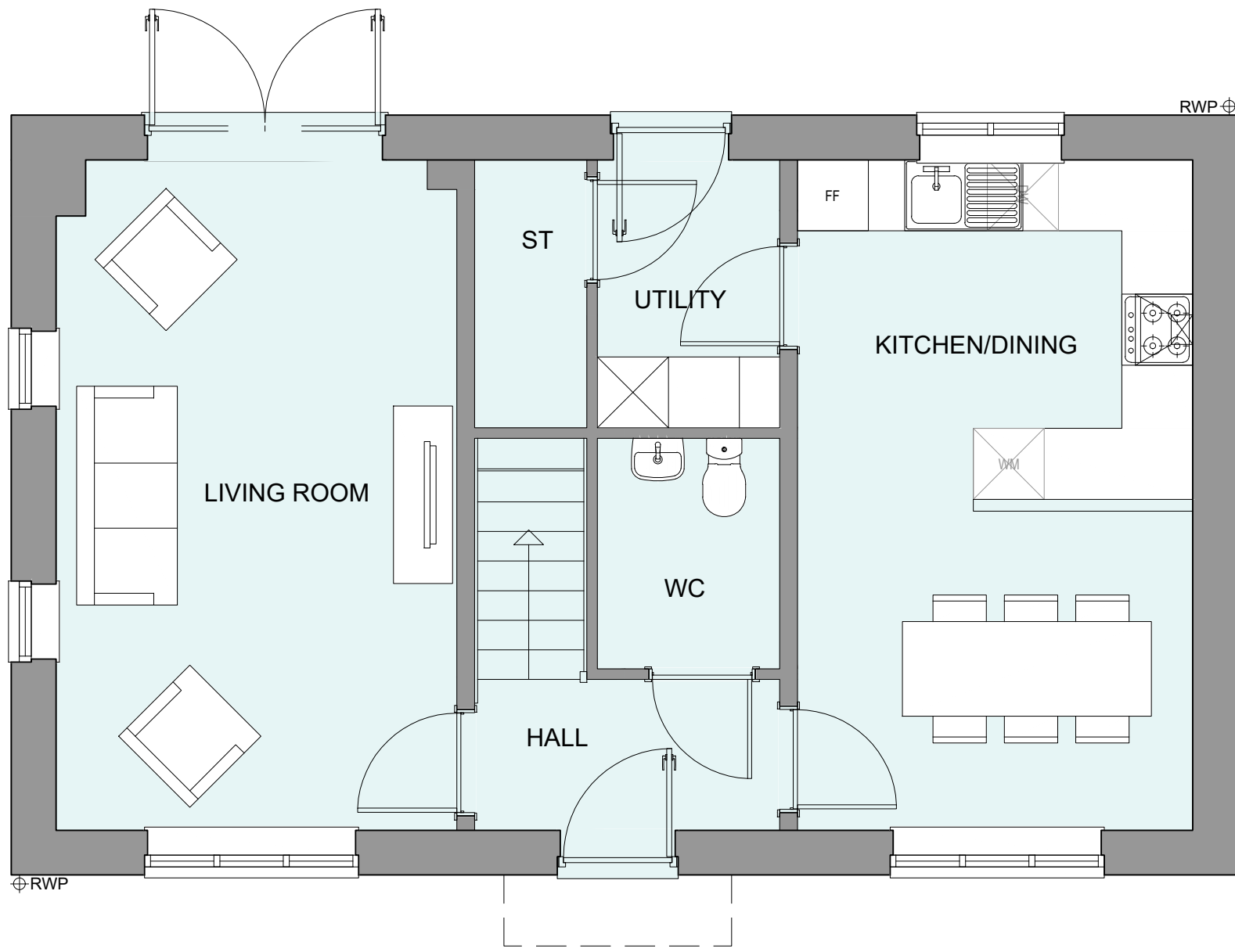
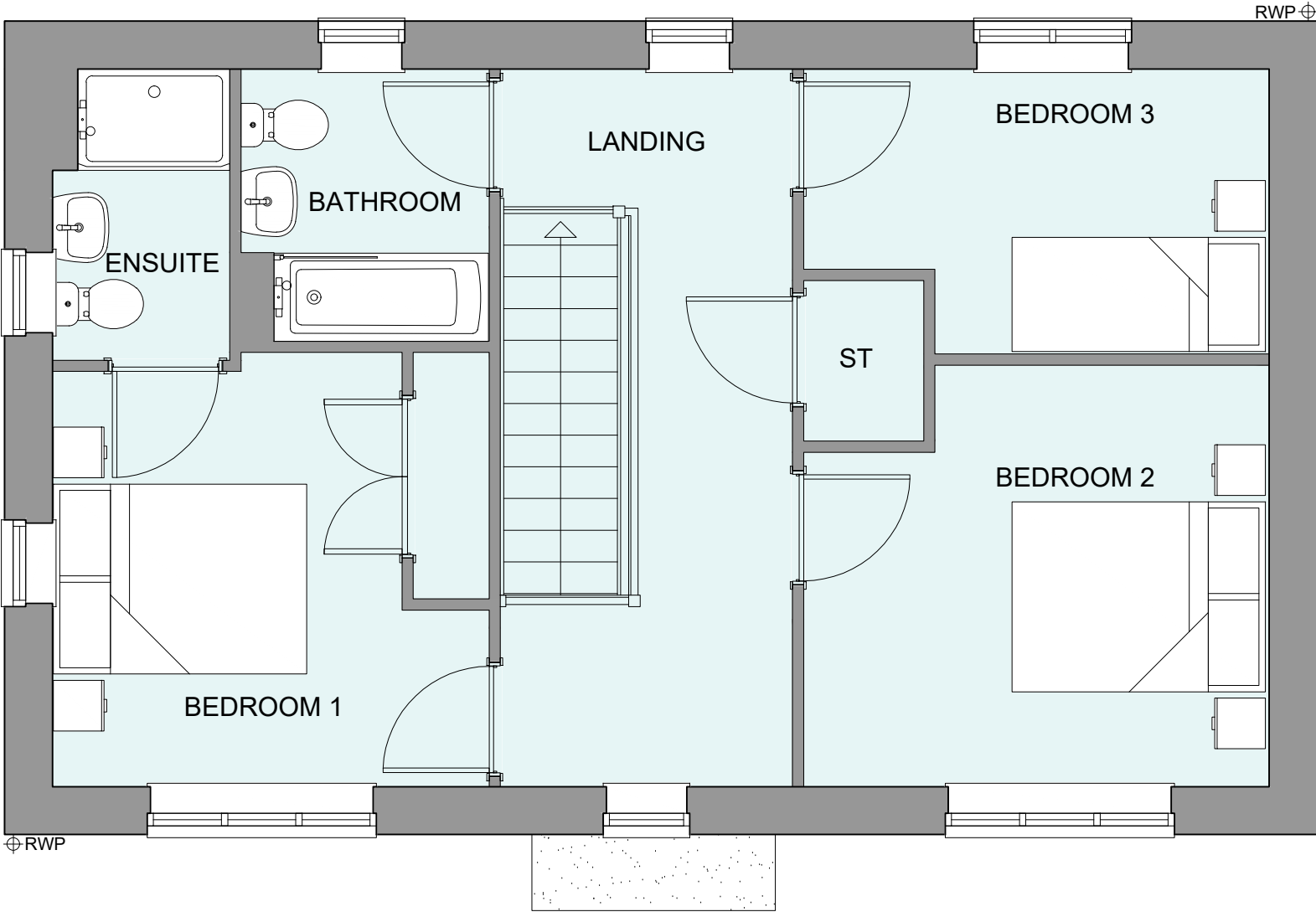


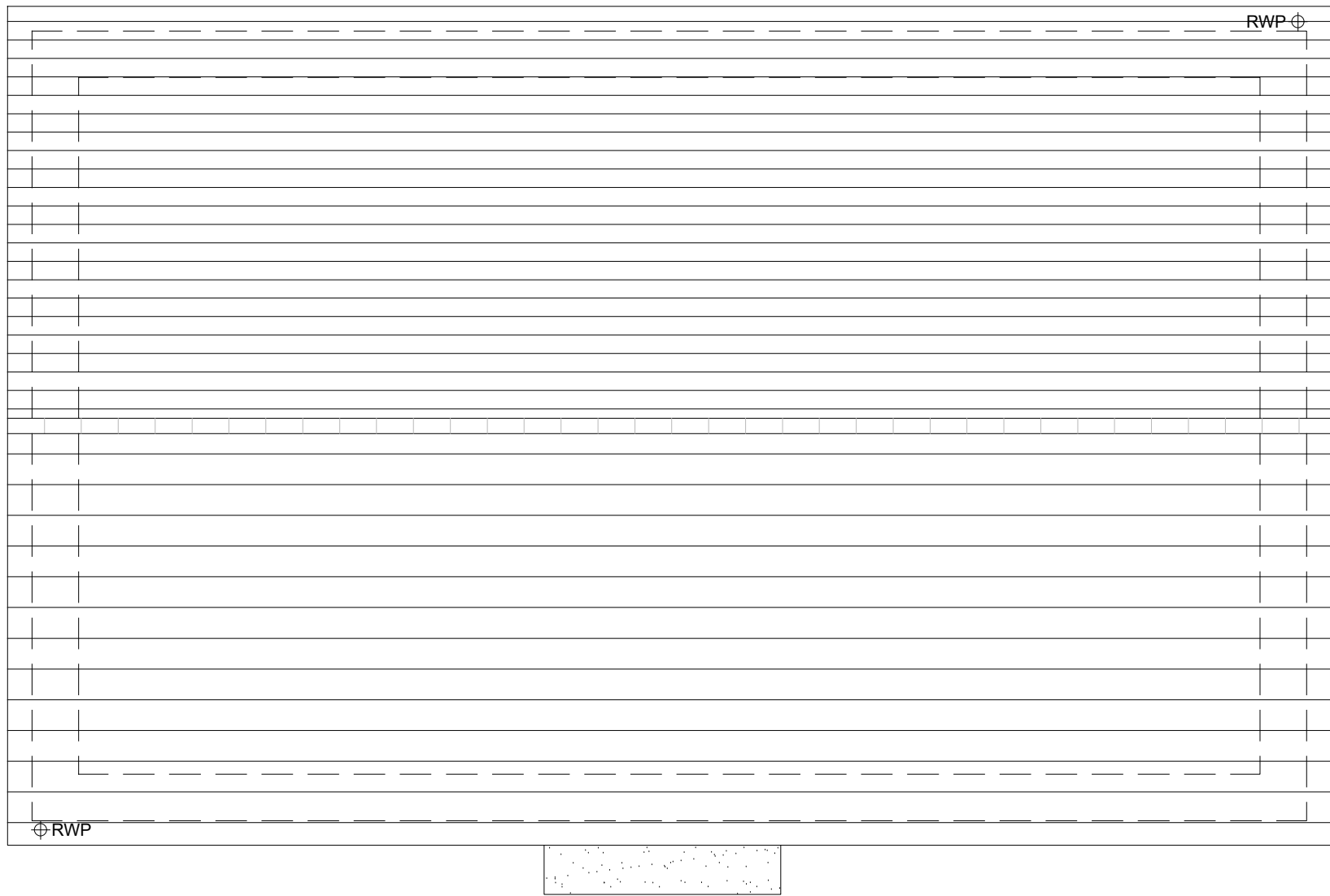
PHASE 4 THE LANDINGS, FORD, WEST SUSSEX
PROPOSED HOUSETYPE PLANS - HT "355" VARIANT "V3"



GROUND FLOOR PLAN



FIRST FLOOR PLAN



ROOF PLAN

HOUSETYPE VARIATIONS		
PLOT NUMBERS:	AS DRAWN	- 181
	HANDED	- 284
MATERIALS:	WALLS	- BRICK
	WALLS (TREATMENT)	- RENDER
	FENESTRATION	- UPVC
	OBSURE WINDOWS	- BATHROOMS & ENSUITES
	EXTERNAL DOORS	- UPVC
	OBSURE DOORS	- UTILITY ROOM
	ROOF	- TILE
WINDOW OMISSION*:	GUTTERING & DOWNPIPES	- UPVC
	FASCIA & SOFFITS	- UPVC
WINDOW OMISSION*:	PLOT(S)	- N/A
	AREA OF UNIT (GIA):	108.9sqm 1172sqft
B. REGS PART M:		
M4(2)		
NDSS COMPLIANT:		
YES		
CHARACTER AREA:		
RUNWAY PARK		

PLEASE SEE ACCOMMODATION SCHEDULE
FOR PLOT SPECIFIC PART M CATEGORY



B	02.12.24	Front door, bedroom 1 & 2 window and canopy amended to address LPA's comments	JM
A	22.08.24	Rwp positions adjusted	JC
Rev	Date	Amendment	Initials

Project:
PHASE 4 THE LANDINGS
FORD, WEST SUSSEX
Client:
VISTRY SOUTH EAST
Drawing:
PROPOSED HOUSETYPE PLANS
HT - "355" VARIANT "V3"

Drawing no: 22.1706.4604 Rev: B
Scale@A1: 1:50 Date: AUG 24 Drawn: CLP Checked: CH

finc Architects Ltd
61-63 New London Road | Chelmsford | Essex | CM2 0ND
T: +44 (0)1245 933888
W: www.fincarchitects.com
E: company@fincarchitects.com

Disclaimer:
© Finc Architects Limited holds the copyright to all the information contained within this document and their written consent must be obtained before copying or using the data other than for the purpose it was originally supplied.
All dimensions and measurements to be checked on site.
Do not scale from this drawing. This drawing is to be printed in colour.

PLANNING ISSUE