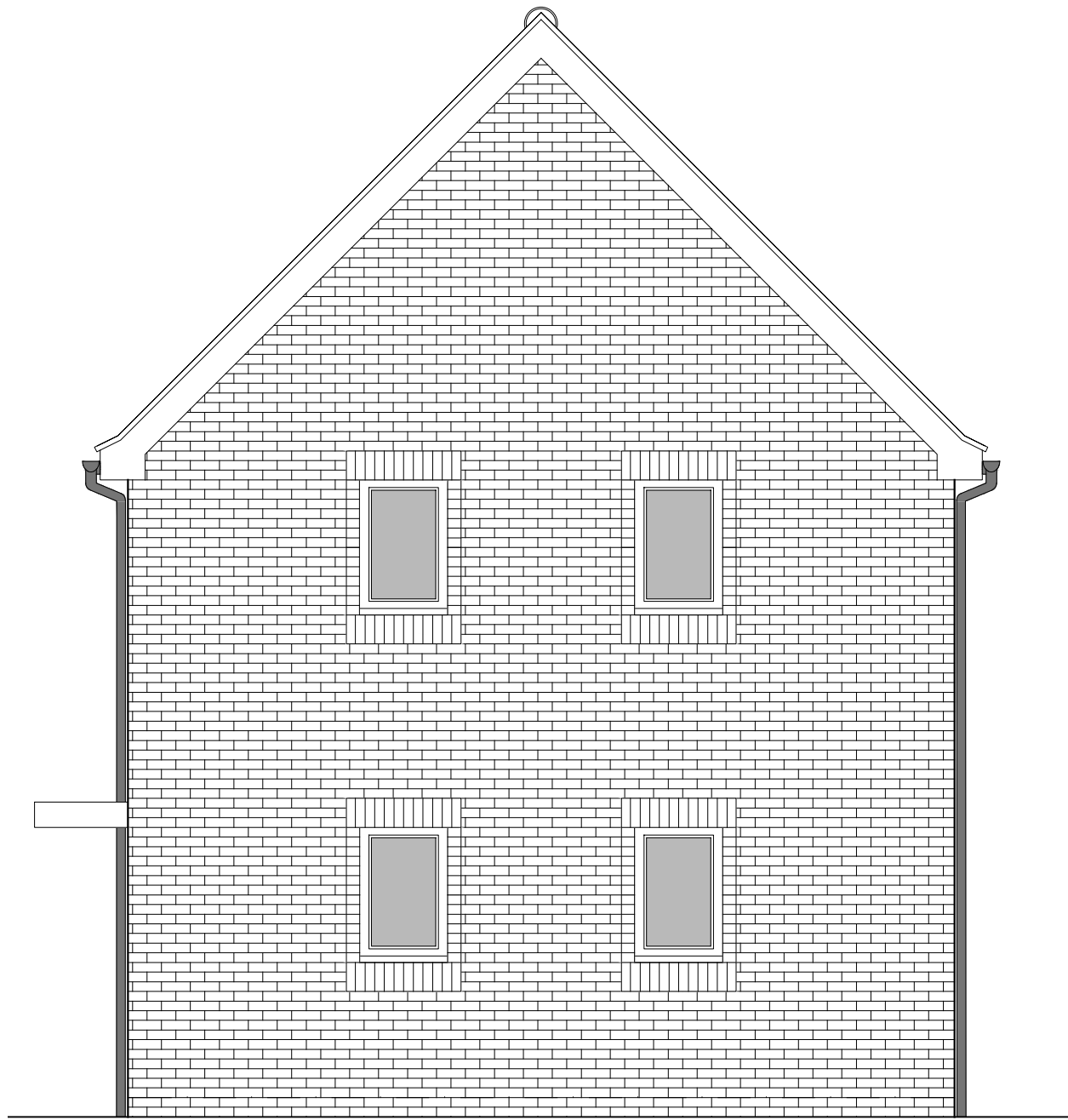


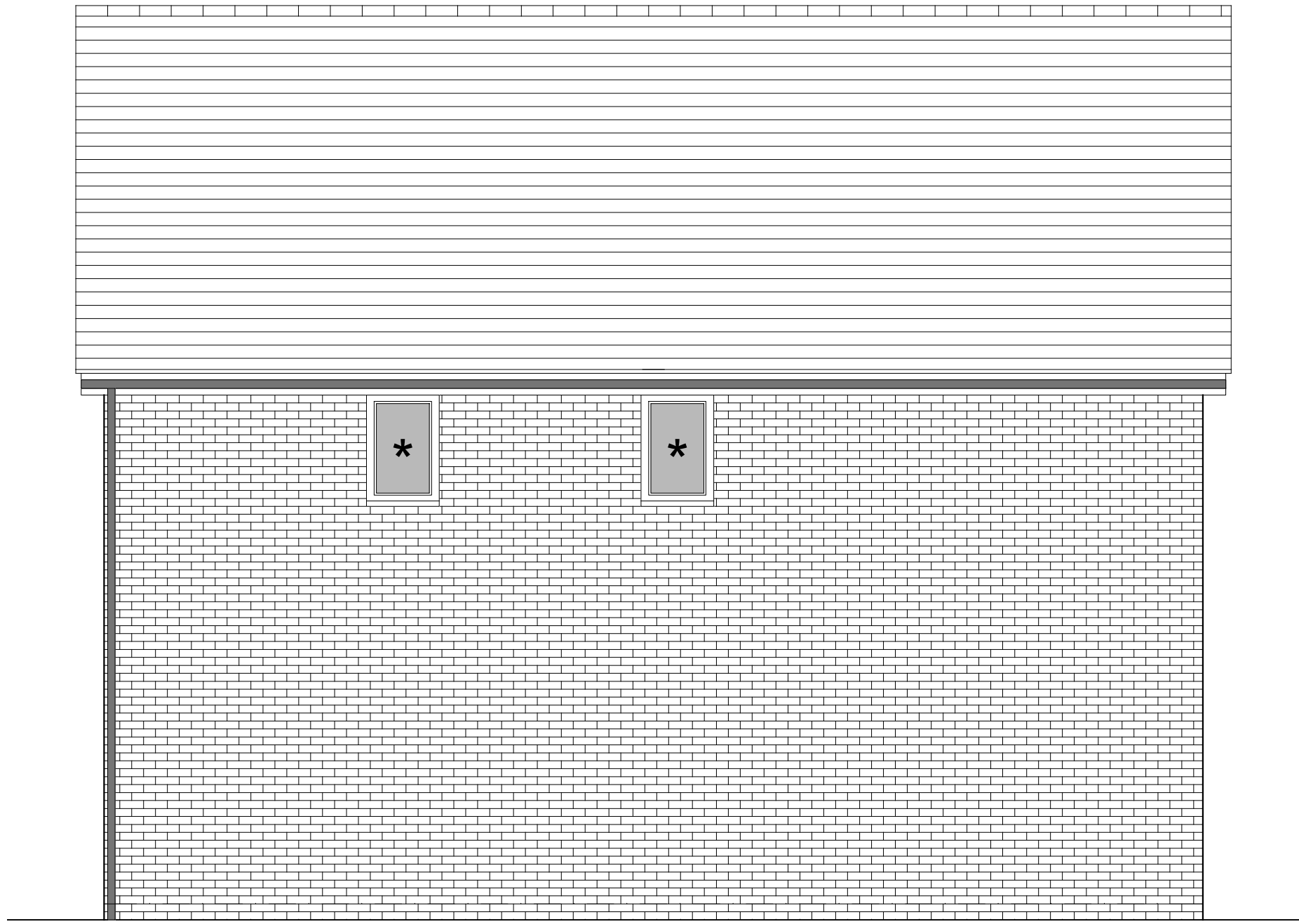
PHASE 4 THE LANDINGS, FORD, WEST SUSSEX  
PROPOSED HOUSETYPE ELEVATIONS - HT "354" VARIANT "V9"



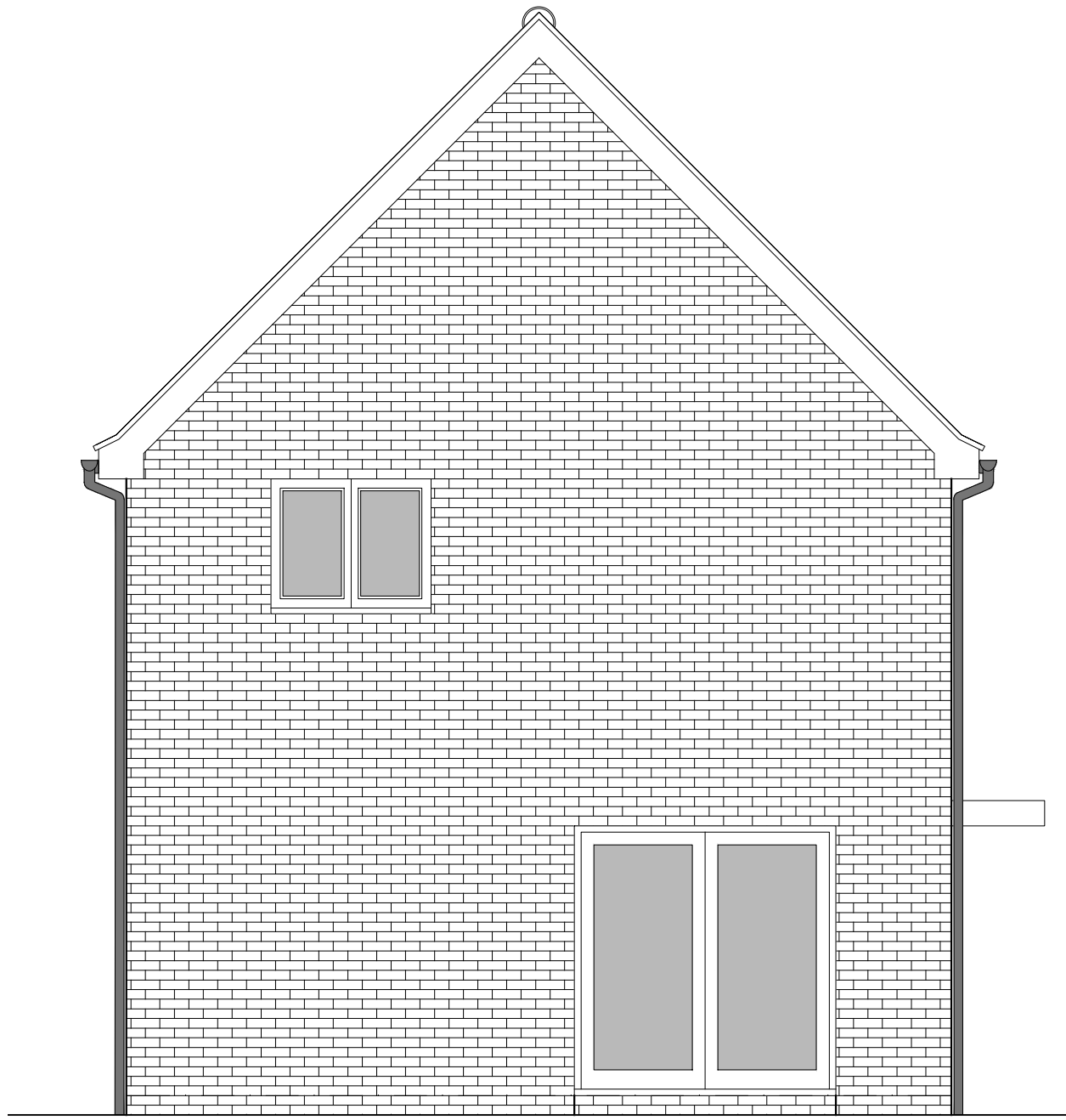
FRONT ELEVATION



SIDE ELEVATION 1



REAR ELEVATION



SIDE ELEVATION 2

HOUSETYPE VARIATIONS		
PLOT NUMBERS:	AS DRAWN	- 10, 86
	HANDED	-
MATERIALS:	WALLS	- BRICK
	WALLS (TREATMENT)	-
	FENESTRATION	- UPVC
	OBSOLETE WINDOWS	- BATHROOMS & ENSUITES
	EXTERNAL DOORS	- UPVC
	OBSOLETE DOORS	-
	ROOF	- TILE
WINDOW OMISSION*:	GUTTERING & DOWNPIPES	- UPVC
	FASCIA & SOFFITS	- UPVC
WINDOW OMISSION*:	PLOT(S)	- 10
AREA OF UNIT (GIA):	108.9sqm	1172sqft
B. REGS PART M:	M4(2)	
NDSS COMPLIANT:	YES	
CHARACTER AREA:	RYEBANK PARK	

PLEASE SEE ACCOMMODATION SCHEDULE  
FOR PLOT SPECIFIC PART M CATEGORY

B	02.12.24	Front door, bedroom 1 & 2 window amended to address LPA's comments	JM
A	21.08.24	Adapted To Suit Material Plan Changes & rwp positions adjusted	JC
Rev	Date	Amendment	Initials

Project:  
PHASE 4 THE LANDINGS  
FORD, WEST SUSSEX

Client:  
VISTRY SOUTH EAST

Drawing:  
PROPOSED HOUSETYPE ELEVATIONS  
HT - "354" VARIANT "V9"

Drawing no: 22.1706.4567

Scale@A1: 1:50 Date: AUG 24 Drawn: JC Checked: CH

**finc** Architects Ltd  
61-63 New London Road | Chelmsford | Essex | CM2 0ND  
T: +44 (0)1245 933988  
W: www.fincarchitects.com  
E: company@fincarchitects.com

**Disclaimers:**  
© FINEC Architects Limited holds the copyright to all the information contained within this document and their written consent must be obtained before copying or using the data other than for the purpose it was originally supplied.  
All dimensions and measurements to be checked on site.  
Do not scale from this drawing. This drawing is to be printed in colour.

PLANNING ISSUE

0 0.5 1 2 3 4 5m  
SCALE 1:50