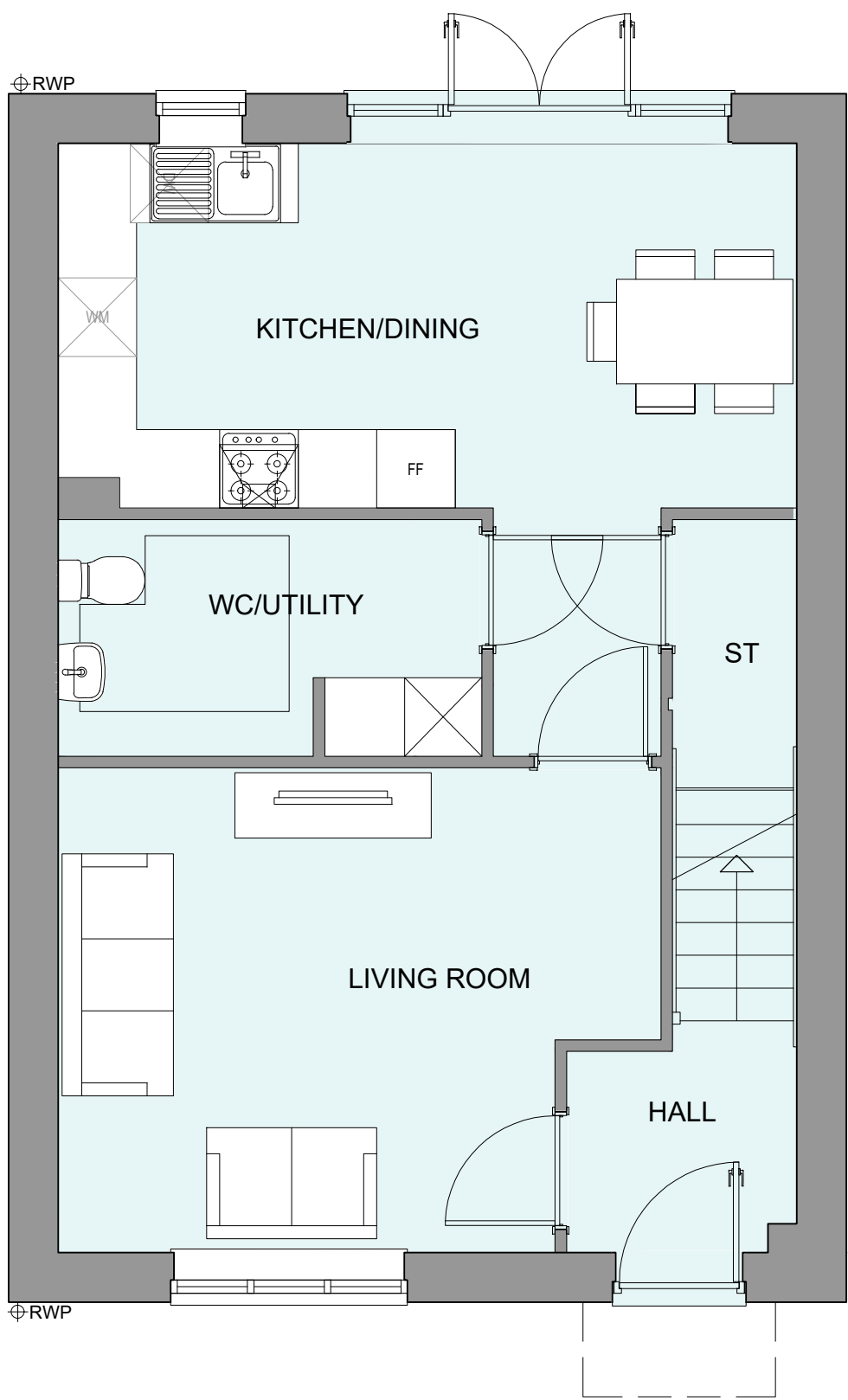
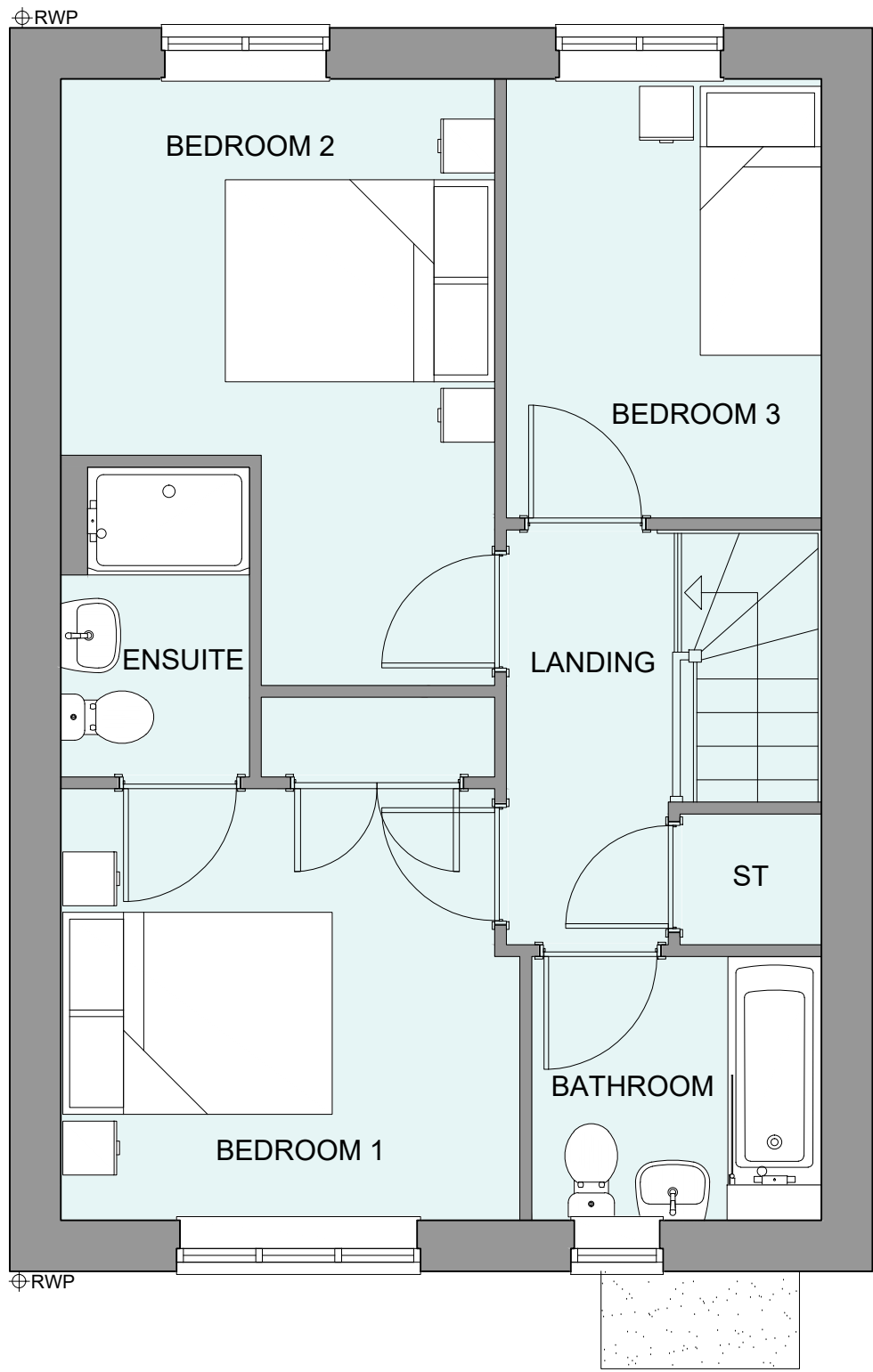


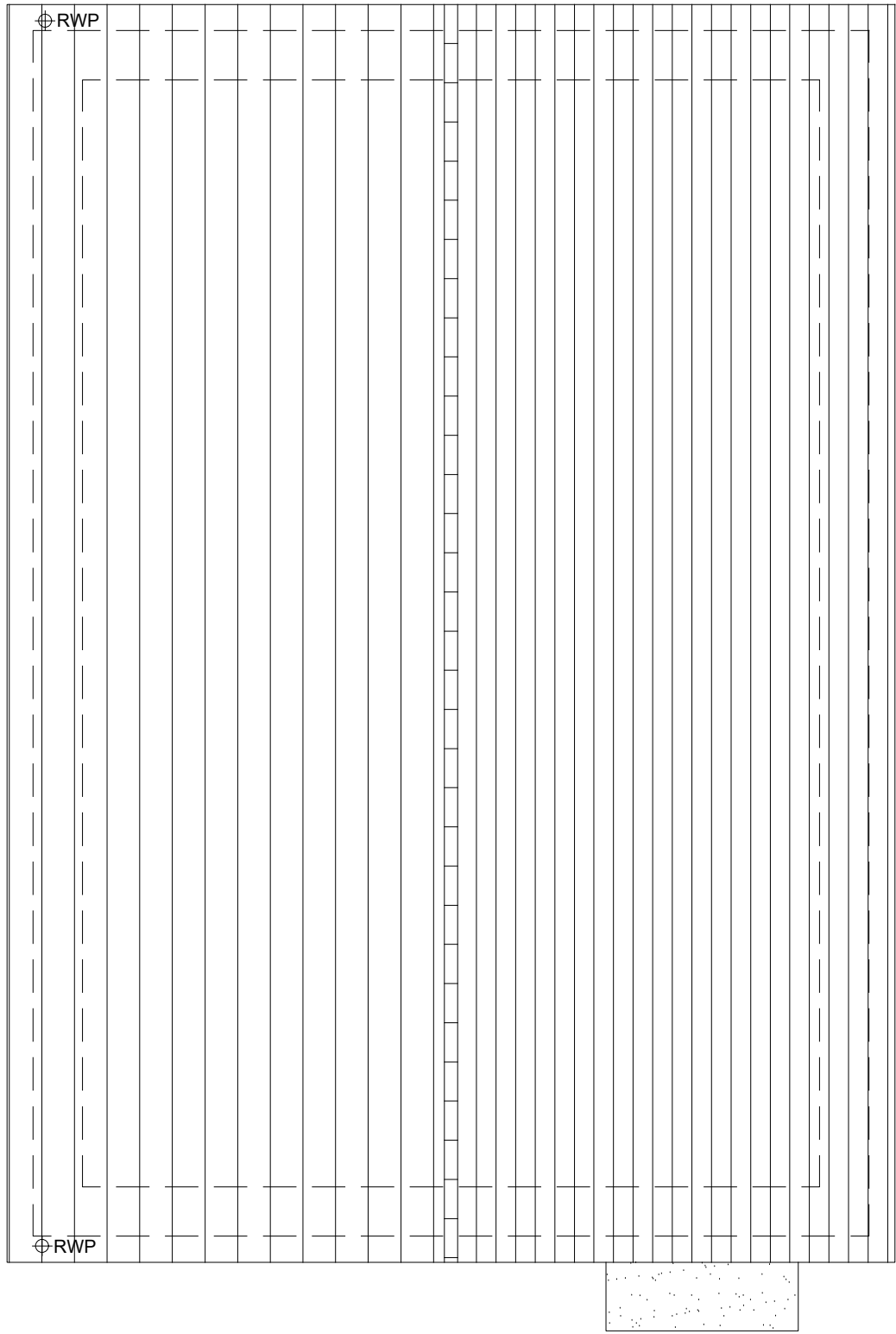
PHASE 4 THE LANDINGS, FORD, WEST SUSSEX
PROPOSED HOUSETYPE PLANS - HT "351" VARIANT "V3"



GROUND FLOOR PLAN



FIRST FLOOR PLAN



ROOF PLAN

HOUSETYPE VARIATIONS		
PLOT NUMBERS:	AS DRAWN	- 273
	HANDED	- 257, 264, 315
MATERIALS:	WALLS	- BRICK
	WALLS (TREATMENT)	-
	FENESTRATION	- UPVC
	OBSCURE WINDOWS	- BATHROOMS & ENSUITES
	EXTERNAL DOORS	- UPVC
	OBSCURE DOORS	-
	ROOF	- TILE
	GUTTERING & DOWNPIPES	- UPVC
	FASCIA & SOFFITS	- UPVC
WINDOW OMISSION*:	PLOT(S)	- N/A
AREA OF UNIT (GIA):	95.7sqm	1031sqft
B. REGS PART M:	M4(2)	
NDSS COMPLIANT:	YES	
CHARACTER AREA:	RUNWAY PARK	

PLEASE SEE ACCOMMODATION SCHEDULE
FOR PLOT SPECIFIC PART M CATEGORY



B	02.12.24	Front door and bedroom 1 window amended to address LPA's comments	JM
A	15.08.24	Adapted To Suit Material Plan Changes	CLP
Rev	Date	Amendment	Initials

Project:
PHASE 4 THE LANDINGS
FORD, WEST SUSSEX
Client:
VISTRY SOUTH EAST
Drawing:
PROPOSED HOUSETYPE PLANS
HT - "351" VARIANT "V3"

Drawing no:	22.1706.4502	Rev:	B
Scale@A1:	1:50	Date:	AUG 24
Drawn:	JC	Checked:	CH

finc

61-63 New London Road | Chelmsford | Essex | CM2 0ND
T: +44 (0)1245 933988
W: www.fincarchitects.com
E: company@fincarchitects.com

Disclaimers:
© Finc Architects Limited holds the copyright to all the information contained within this document and their written consent must be obtained before copying or using the data other than for the purpose it was originally supplied.
All dimensions and measurements to be checked on site.
Do not scale from this drawing. This drawing is to be printed in colour.

PLANNING ISSUE