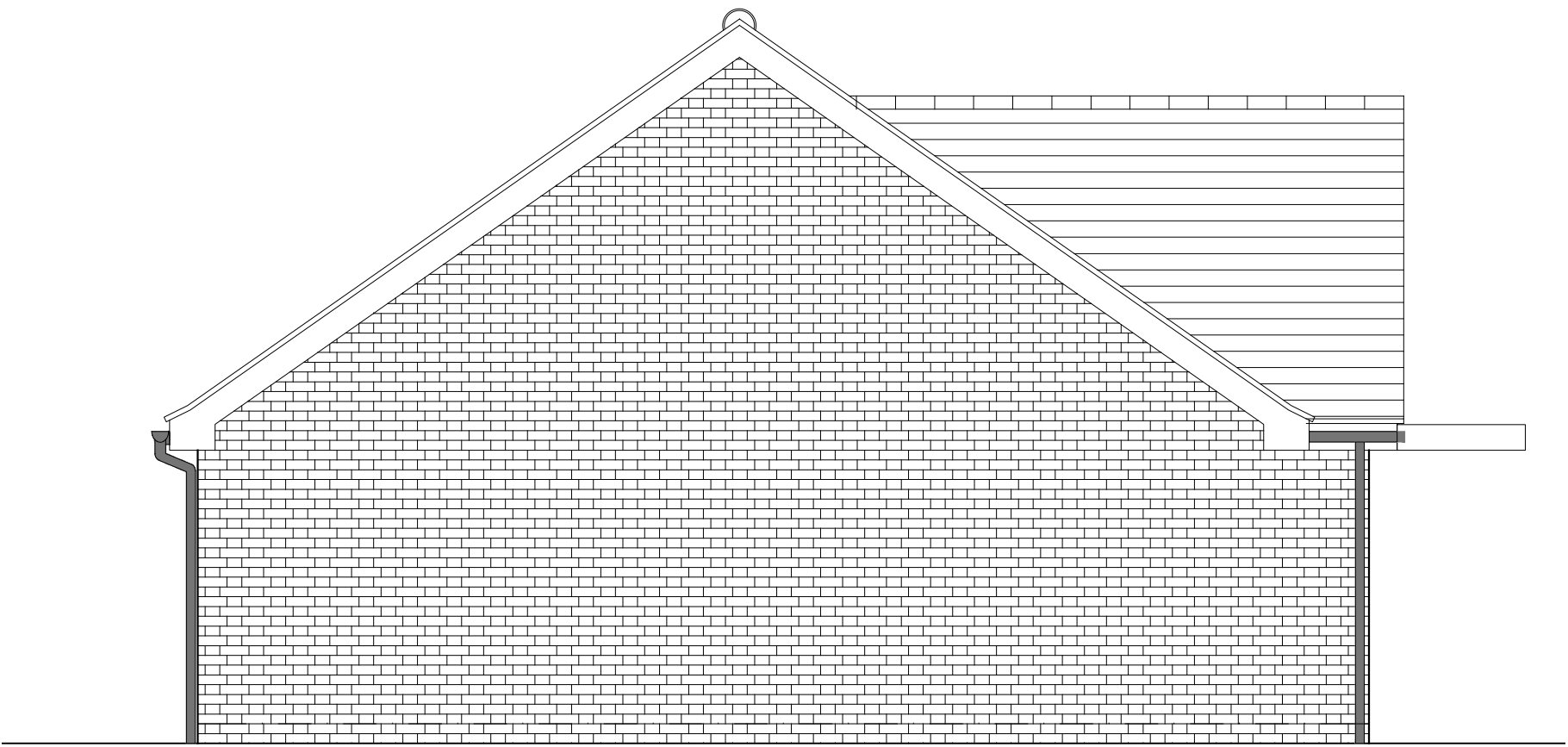


HOUSETYPE VARIATIONS		
PLOT NUMBERS:	AS DRAWN	- 89,108
	HANDED	- 90,109
MATERIALS:	WALLS	- FLEMISH BOND BRICK
	WALLS (TREATMENT)	-
	FENESTRATION	- UPVC
	OBSCURE WINDOWS	- BATHROOMS
	EXTERNAL DOORS	- UPVC
	OBSCURE DOORS	-
	ROOF	- TILE
	GUTTERING & DOWNPIPES	- UPVC
	FASCIA & SOFFITS	- UPVC
WINDOW OMISSION*:	PLOT(S)	- N/A
AREA OF UNIT (GIA):	74.1sqm	797sqft
B. REGS PART M:	M4(3)	
NDSS COMPLIANT:	YES	
CHARACTER AREA:	RYEBANK PARK	

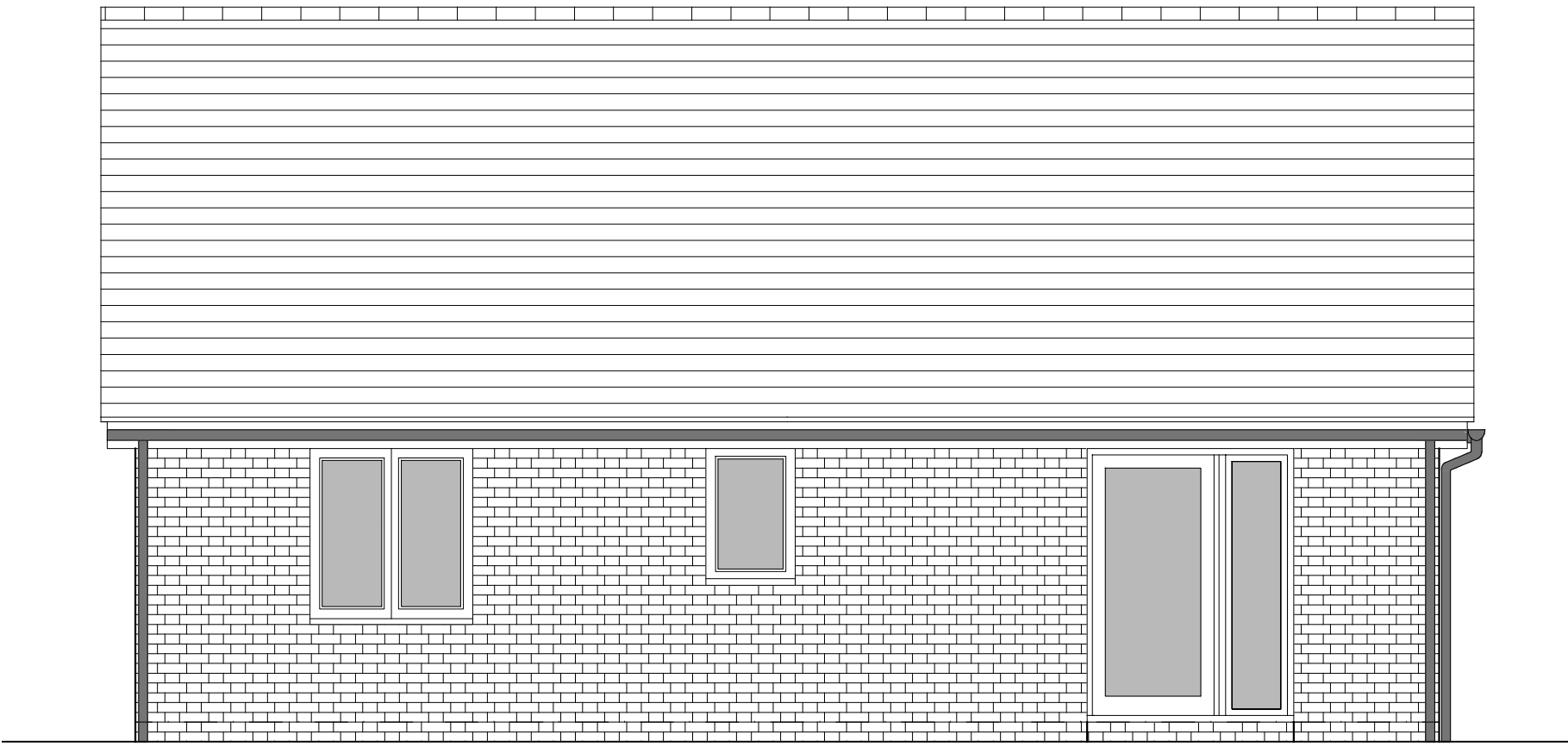
PLEASE SEE ACCOMMODATION SCHEDULE
FOR PLOT SPECIFIC PART M CATEGORY



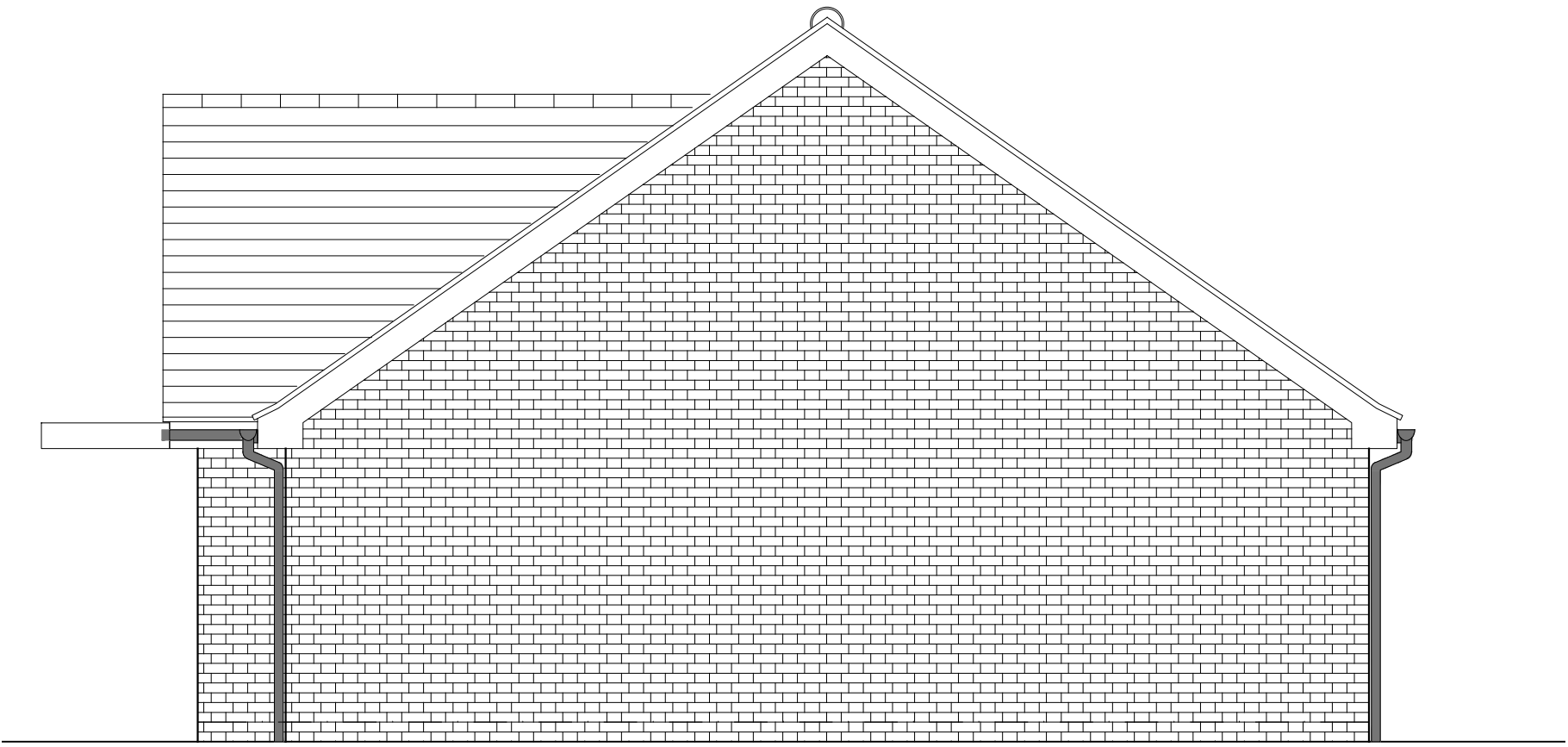
FRONT ELEVATION



SIDE ELEVATION 1



REAR ELEVATION



SIDE ELEVATION 2

B	02.12.24	Front door amended to address LPA's comments	JM
A	27.11.24	Revised as per planning comments 01.11.2024	CLP
Rev	Date	Amendment	Initials

Project:
PHASE 4 THE LANDINGS
FORD, WEST SUSSEX
Client:
VISTRY SOUTH EAST
Drawing:
PROPOSED HOUSETYPE ELEVATIONS
HT - "234" VARIANT "V1"

Drawing no:	22.1706.4301	Rev:	B
Scale@A1:	1:50	Date:	AUG 24
Drawn:	JC	Checked:	CH

finc	FINC Architects Ltd	
	61-63 New London Road Chelmsford Essex CM2 0ND	
	T:	+44 (0)1245 933988
	W:	www.fincarchitects.com
	E:	company@fincarchitects.com

Disclaimer:
© FINC Architects Limited holds the copyright to all the information contained within this document and their written consent must be obtained before copying or using the data other than for the purpose it was originally supplied.
All dimensions and measurements to be checked on site.
Do not scale from this drawing. This drawing is to be printed in colour.

