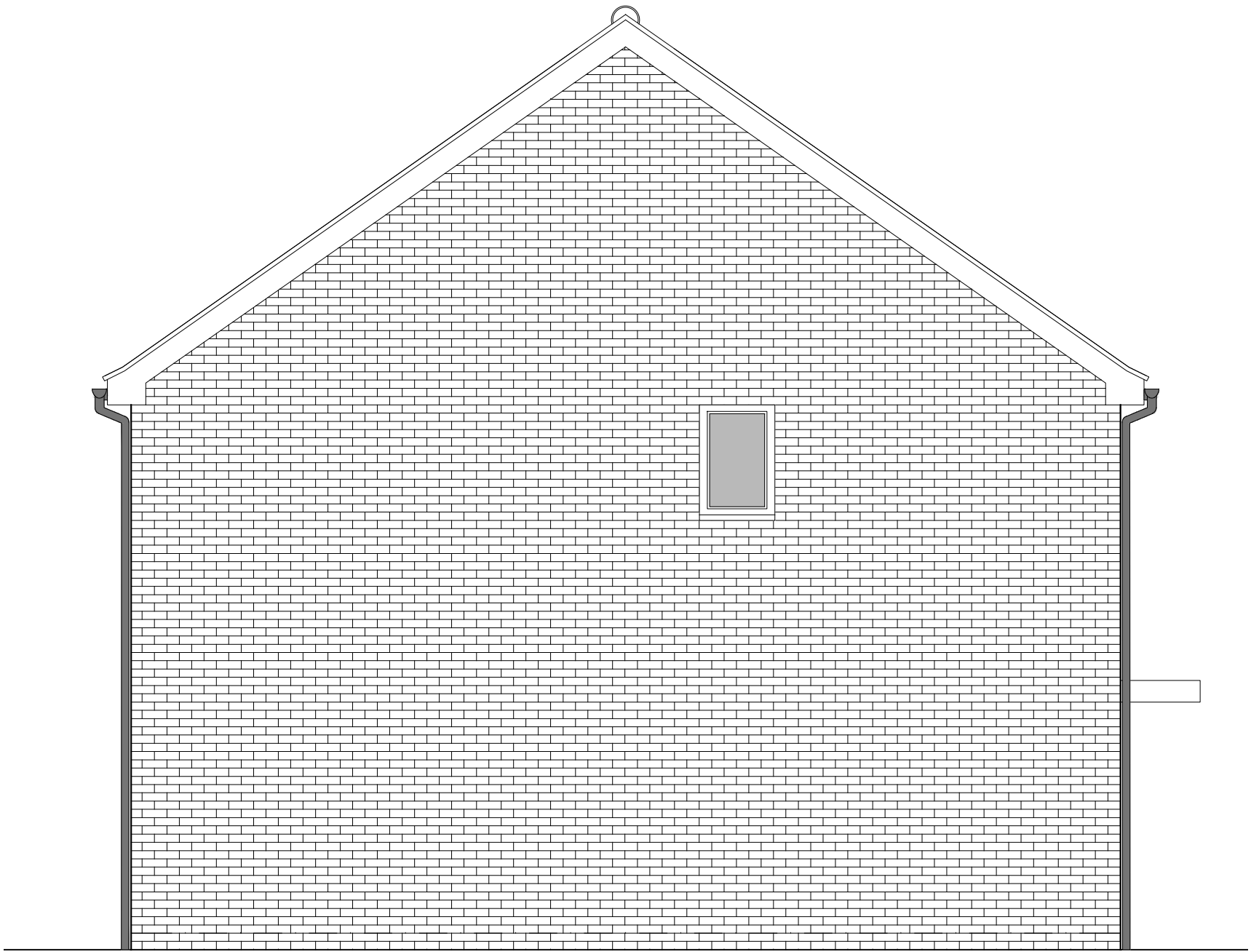


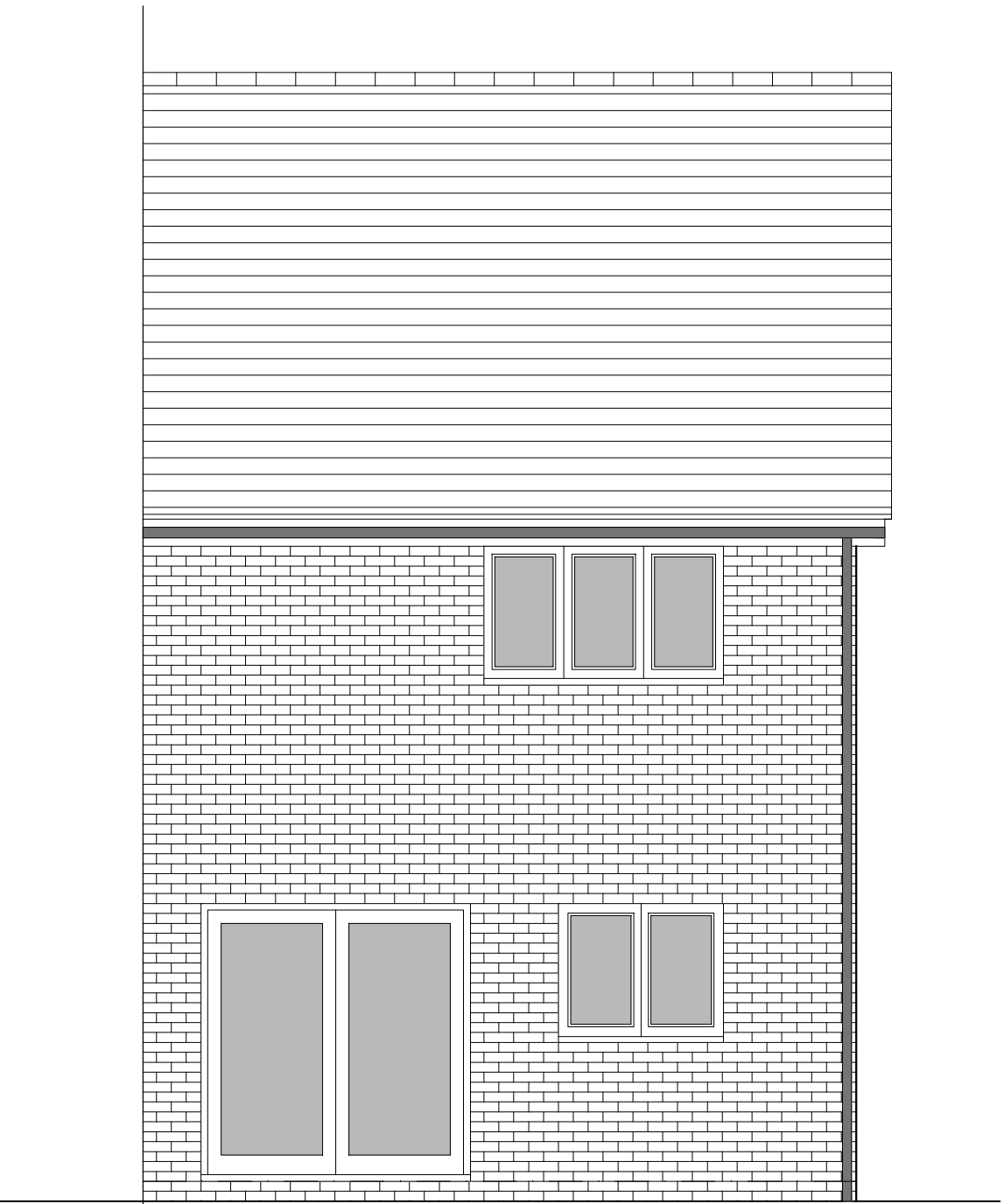
PHASE 4 THE LANDINGS, FORD, WEST SUSSEX  
PROPOSED HOUSETYPE PLANS & ELEVATIONS - HT "242" VARIANT "V7"



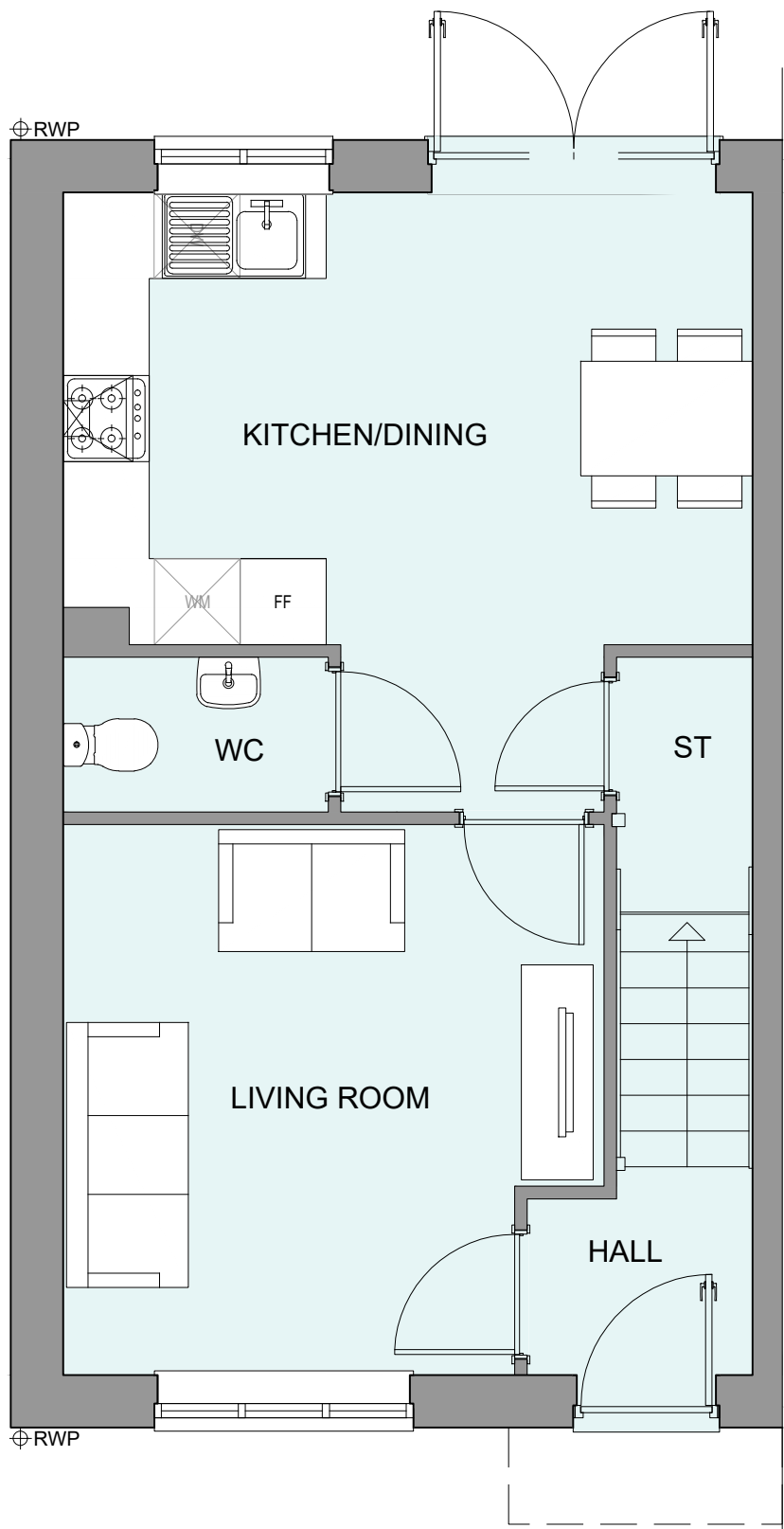
FRONT ELEVATION



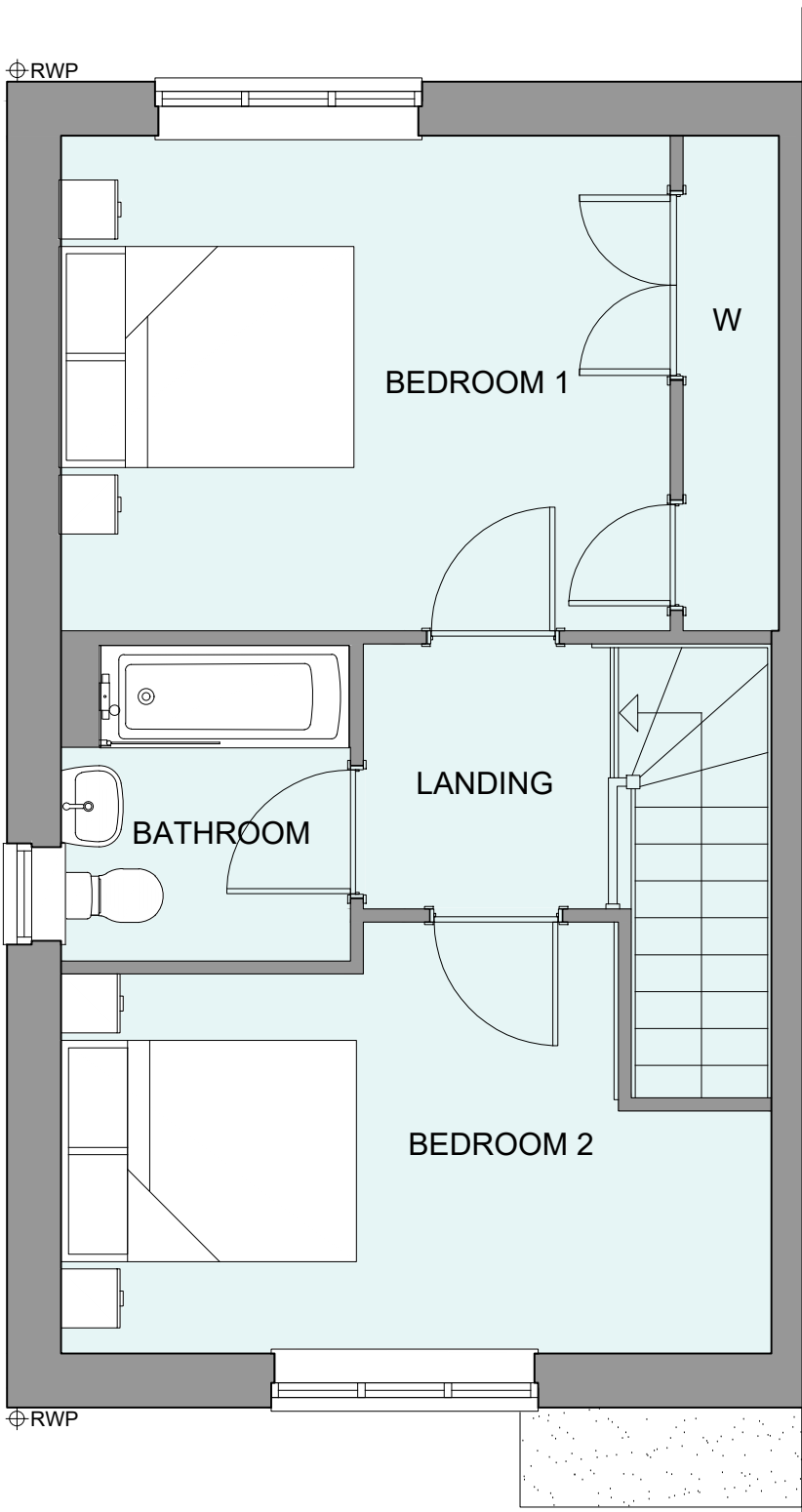
SIDE ELEVATION 1



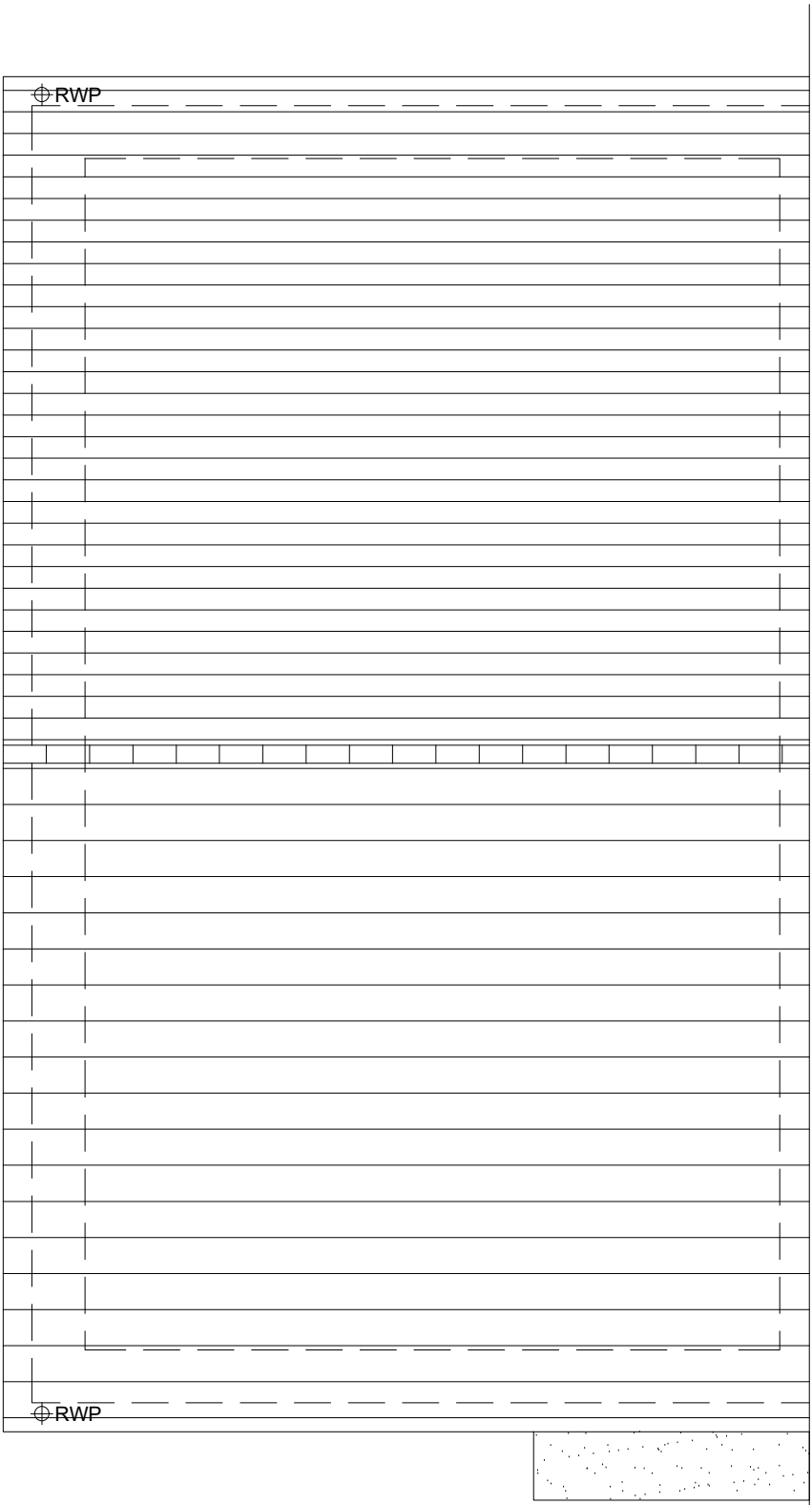
REAR ELEVATION



GROUND FLOOR PLAN



FIRST FLOOR PLAN



ROOF PLAN

HOUSETYPE VARIATIONS		
PLOT NUMBERS:	AS DRAWN	- 65, 70
	HANDED	- 63, 69
MATERIALS:	WALLS	- BRICK
	WALLS (TREATMENT)	-
	FENESTRATION	- UPVC
	OBSCURER WINDOWS	- BATHROOMS
	EXTERNAL DOORS	- UPVC
	OBSCURER DOORS	-
	ROOF	- TILE
WINDOW OMISSION*:	PLOT(S)	- N/A
	AREA OF UNIT (GIA):	79.4sqm 855sqft
B. REGS PART M:		
NDSS COMPLIANT:		
CHARACTER AREA:		

PLEASE SEE ACCOMMODATION SCHEDULE  
FOR PLOT SPECIFIC PART M CATEGORY



A	02.12.24	Doors & Canopies amended to address LPA's comments		JM
Rev	Date	Amendment		Initials
Project:				
PHASE 4 THE LANDINGS				
FORD, WEST SUSSEX				
Client:				
VISTRY SOUTH EAST				
Drawing:				
PROPOSED HOUSETYPE PLANS & ELEVATIONS				
HT - "242" VARIANT "V7"				
Drawing no:				Rev:
22.1706.4106				A
Scale@A1: 1:50 Date: AUG 24 Drawn: JC Checked: CH				

**finc**

61-63 New London Road | Chelmsford | Essex | CM2 0ND  
T: +44 (0)1245 933888  
W: [www.fincarchitects.com](http://www.fincarchitects.com)  
E: [company@fincarchitects.com](mailto:company@fincarchitects.com)

Disclaimers: © Finc Architects Limited holds the copyright to all the information contained within this document and their written consent must be obtained before copying or using the data other than for the purpose it was originally supplied.  
All dimensions and measurements to be checked on site.  
Do not scale from this drawing. This drawing is to be printed in colour.