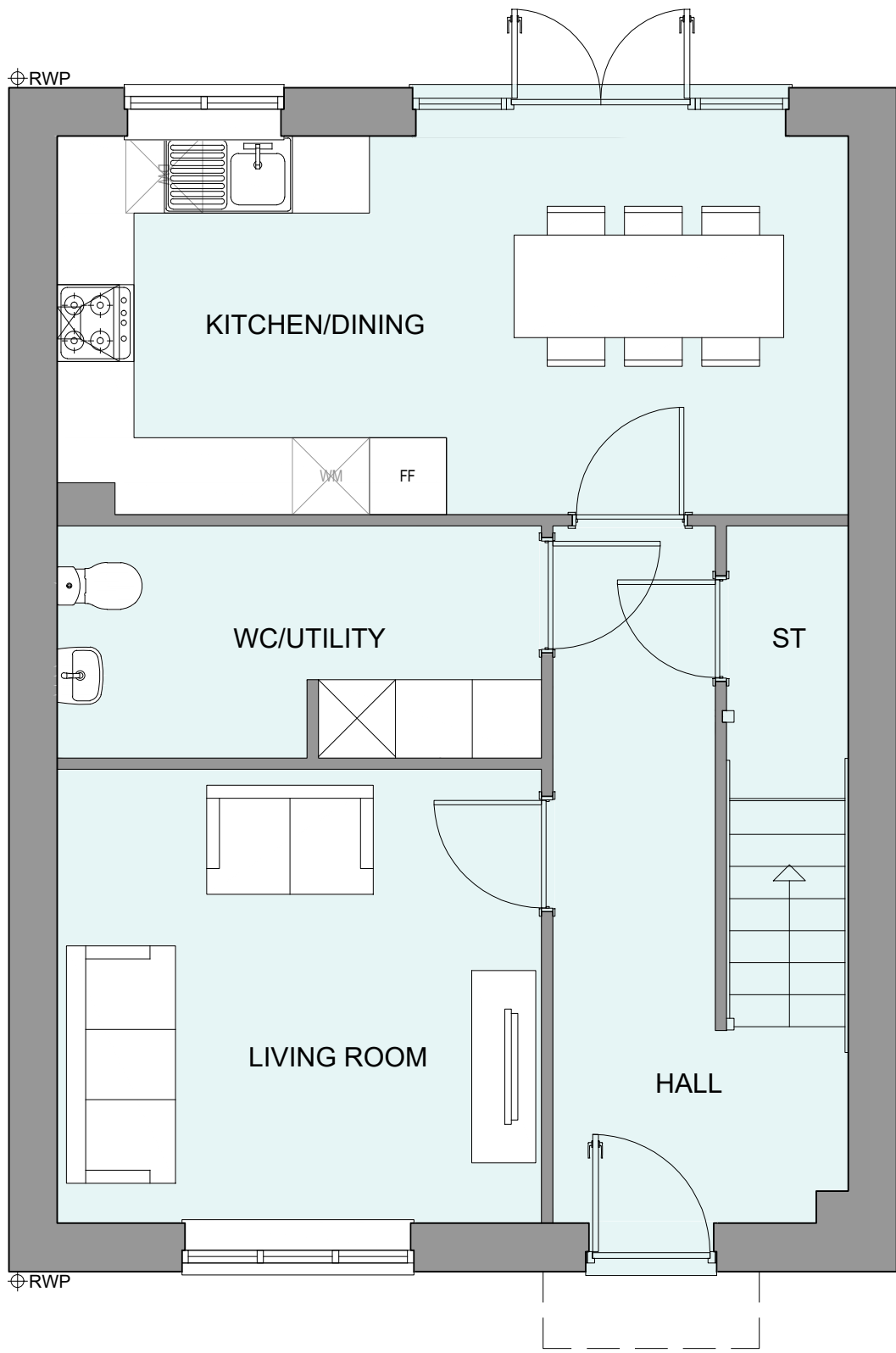


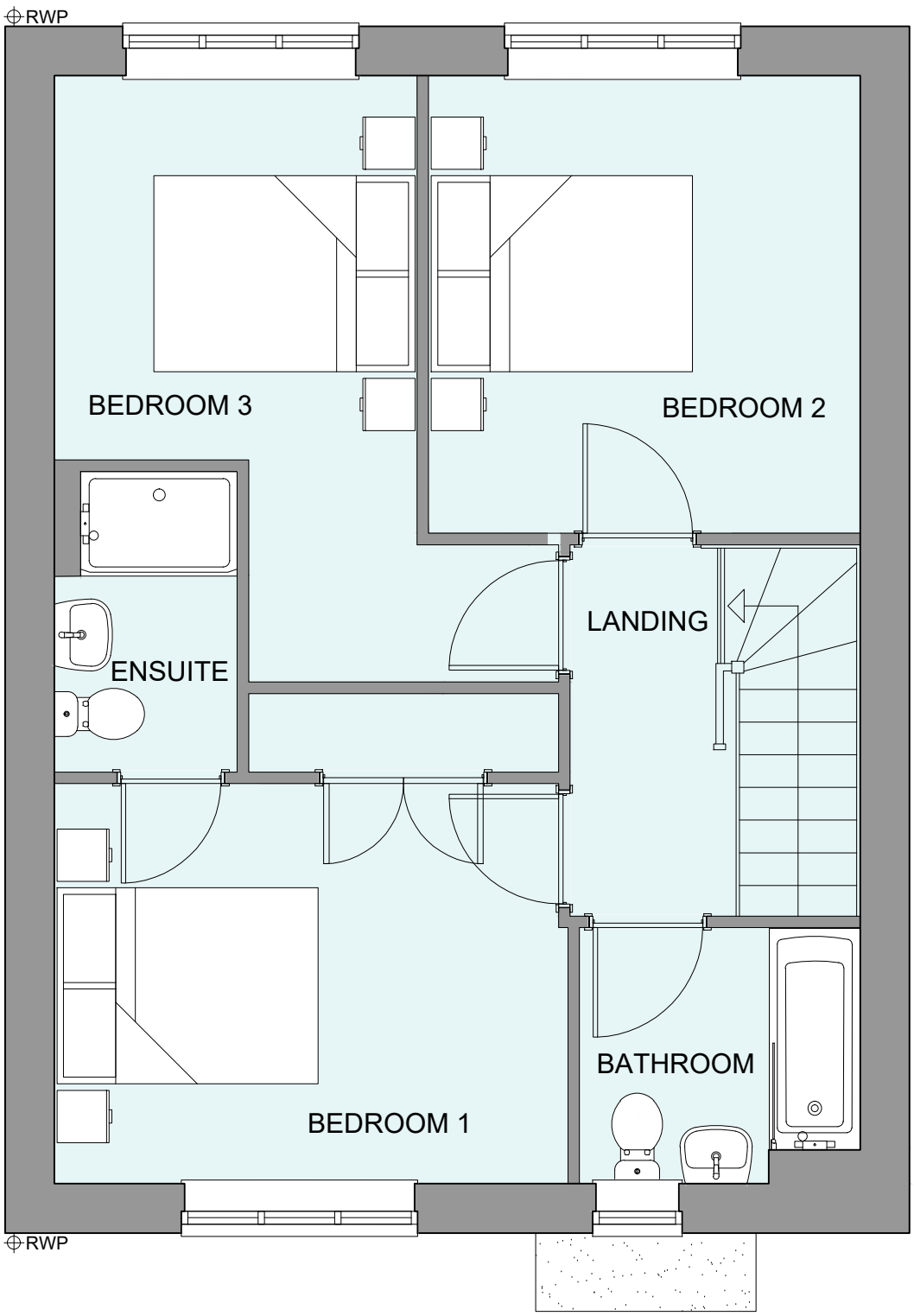
PHASE 4 THE LANDINGS, FORD, WEST SUSSEX
PROPOSED HOUSETYPE PLANS - HT "361" VARIANT "V5"

HOUSETYPE VARIATIONS		
PLOT NUMBERS:	AS DRAWN	- 35,43
	HANDED	- 7, 81, 126
MATERIALS:	WALLS	- BRICK
	WALLS (TREATMENT)	-
	FENESTRATION	- UPVC
	OBSCURER WINDOWS	- BATHROOMS
	EXTERNAL DOORS	- UPVC
	OBSCURER DOORS	-
	ROOF	- TILE
WINDOW OMISSION*:	GUTTERING & DOWNPIPES	- UPVC
	FASCIA & SOFFITS	- UPVC
WINDOW OMISSION*:	PLOT(S)	- N/A
	AREA OF UNIT (GIA):	104.7sqm 1126sqft
B. REGS PART M:		
M4(2)		
NDSS COMPLIANT:		
YES		
CHARACTER AREA:		
RYEBANK PARK		

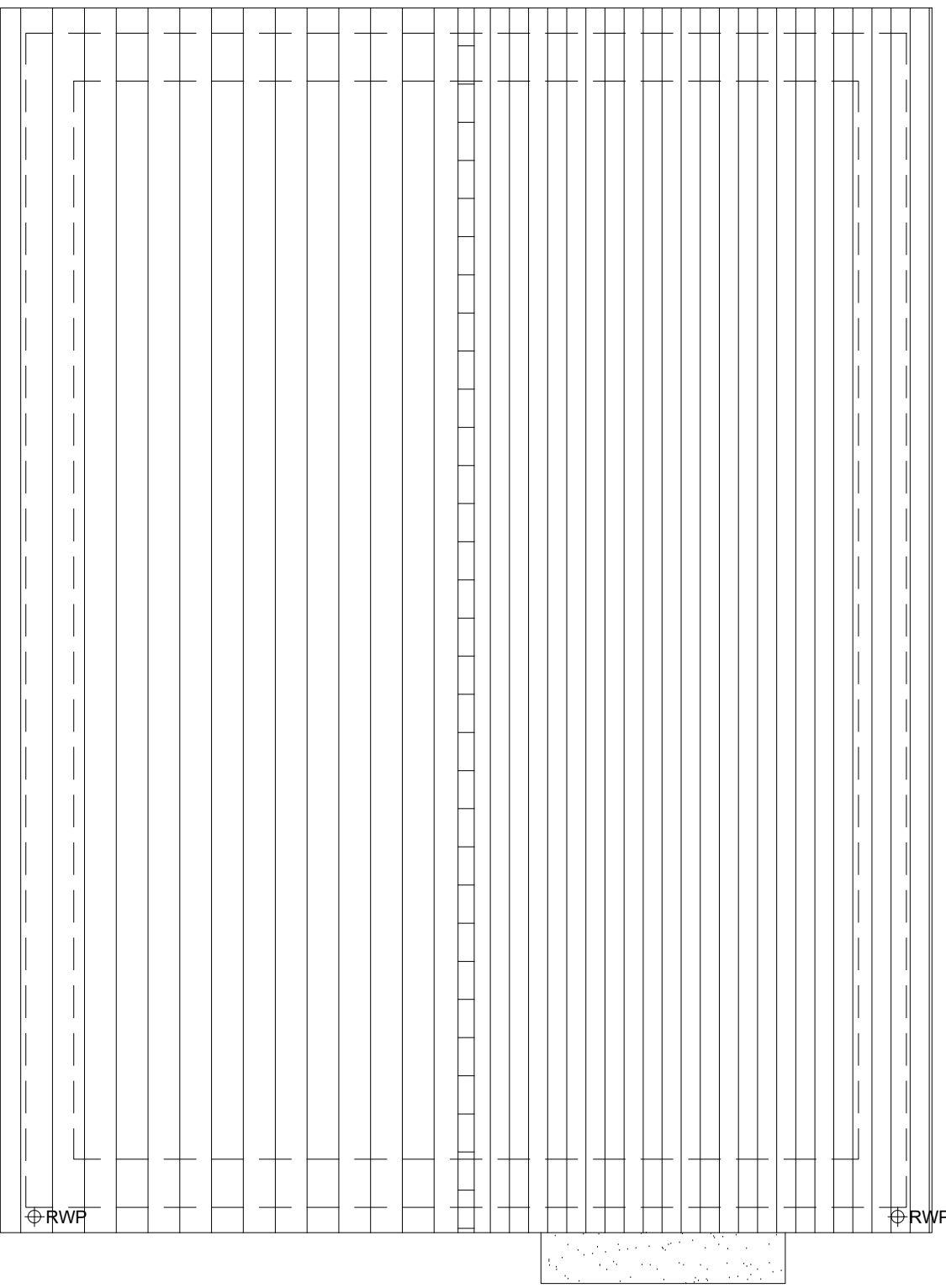
PLEASE SEE ACCOMMODATION SCHEDULE
FOR PLOT SPECIFIC PART M CATEGORY



GROUND FLOOR PLAN



FIRST FLOOR PLAN



ROOF PLAN



B	10.12.24	House types changed to gable front	YC
A	15.08.24	Adapted To Suit Material Plan Changes	CLP
Rev	Date	Amendment	Initials

Project:
PHASE 4 THE LANDINGS
FORD, WEST SUSSEX
Client:
VISTRY SOUTH EAST
Drawing:
PROPOSED HOUSETYPE PLANS
HT - "361" VARIANT "V5"

Drawing no: 22.1706.4706 Rev: B

Scale@A1: 1:50 Date: AUG 24 Drawn: JC Checked: CH

finc Architects Ltd
61-63 New London Road | Chelmsford | Essex | CM2 0ND
T: +44 (0)1245 933988
W: www.fincarchitects.com
E: company@fincarchitects.com

Disclaimers:
© Finc Architects Limited holds the copyright to all the information contained within this document and their written consent must be obtained before copying or using the data other than for the purpose it was originally supplied.
All dimensions and measurements to be checked on site.
Do not scale from this drawing. This drawing is to be printed in colour.

PLANNING ISSUE