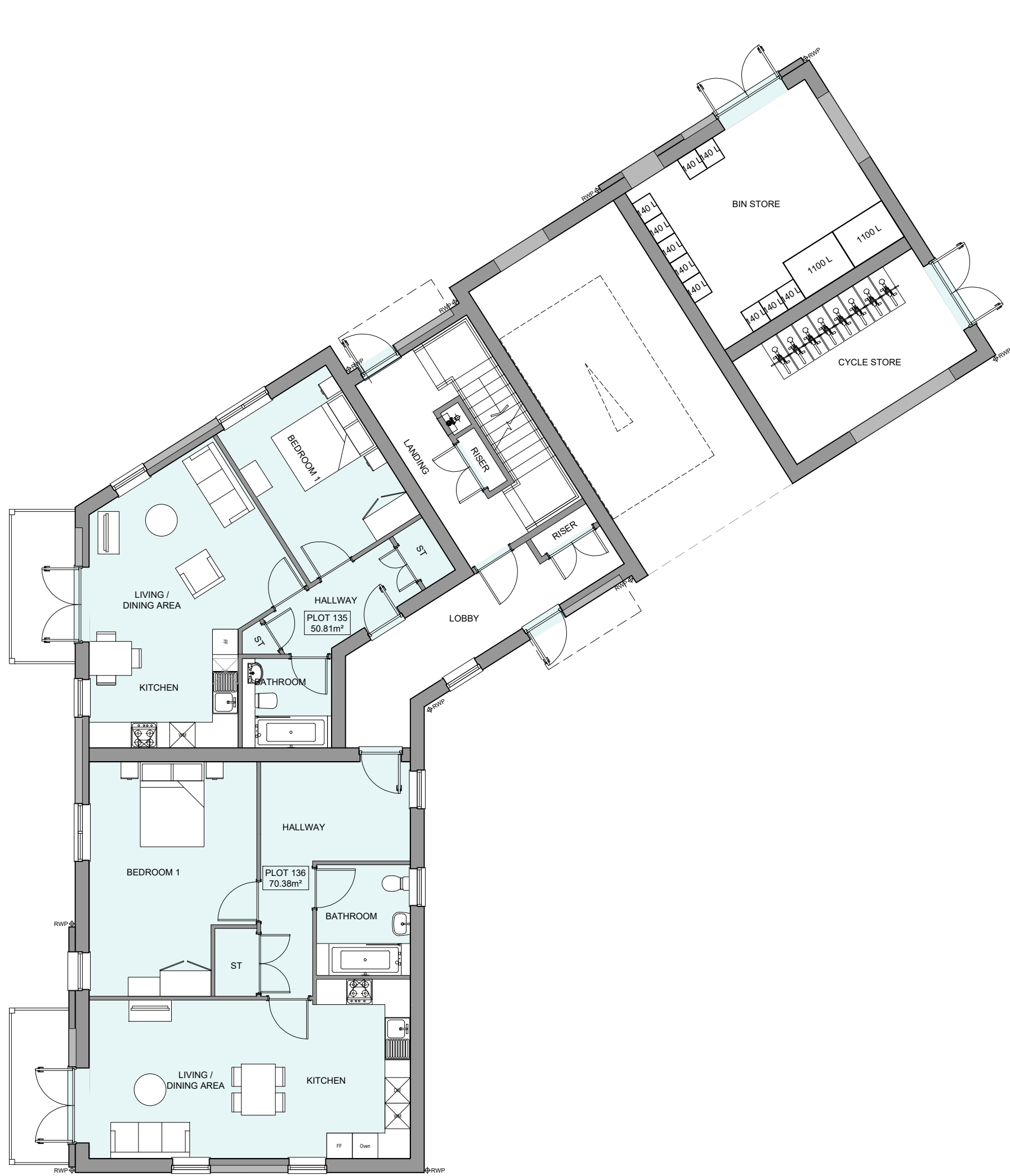
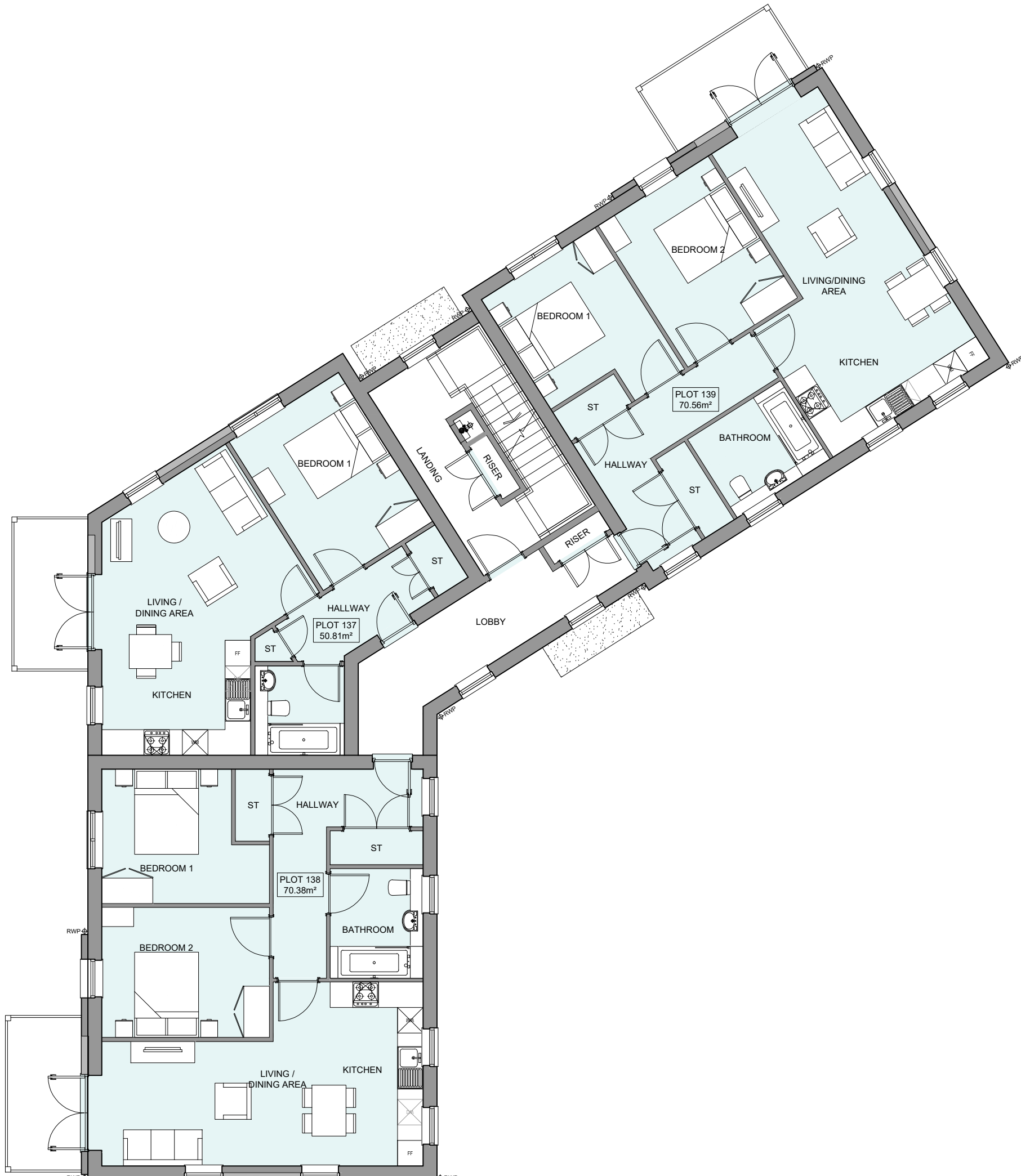


PHASE 4 THE LANDINGS, FORD, WEST SUSSEX  
PROPOSED FLATBLOCK PLANS - PLOTS 135-142



GROUND FLOOR PLAN



FIRST FLOOR PLAN



B	12/12/24	Changes to internal layouts and plot numbers	ZA
A	16/08/24	Changes to layouts and elevations	ZA
Rev	Date	Amendment	Initials

Project:  
PHASE 4 THE LANDINGS  
FORD, WEST SUSSEX  
Client:  
VISTRY SOUTH EAST  
Drawing:  
PROPOSED FLATBLOCK PLANS  
PLOTS 135-142

Drawing no:	22.1706.5500	Rev:	B
Scale@A1:	1:100	Date:	AUG 24
Drawn:	ZA	Checked:	YC

**finc**

61-63 New London Road | Chelmsford | Essex | CM2 0ND  
T: +44 (0)1245 933988  
W: [www.fincarchitects.com](http://www.fincarchitects.com)  
E: [company@fincarchitects.com](mailto:company@fincarchitects.com)

Disclaimers: © FINC Architects Limited holds the copyright to all the information contained within this document and their written consent must be obtained before copying or using the data other than for the purpose it was originally supplied.  
All dimensions and measurements to be checked on site.  
Do not scale from this drawing. This drawing is to be printed in colour.

PLANNING ISSUE