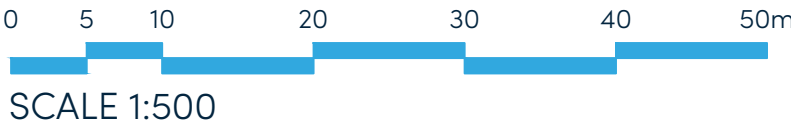
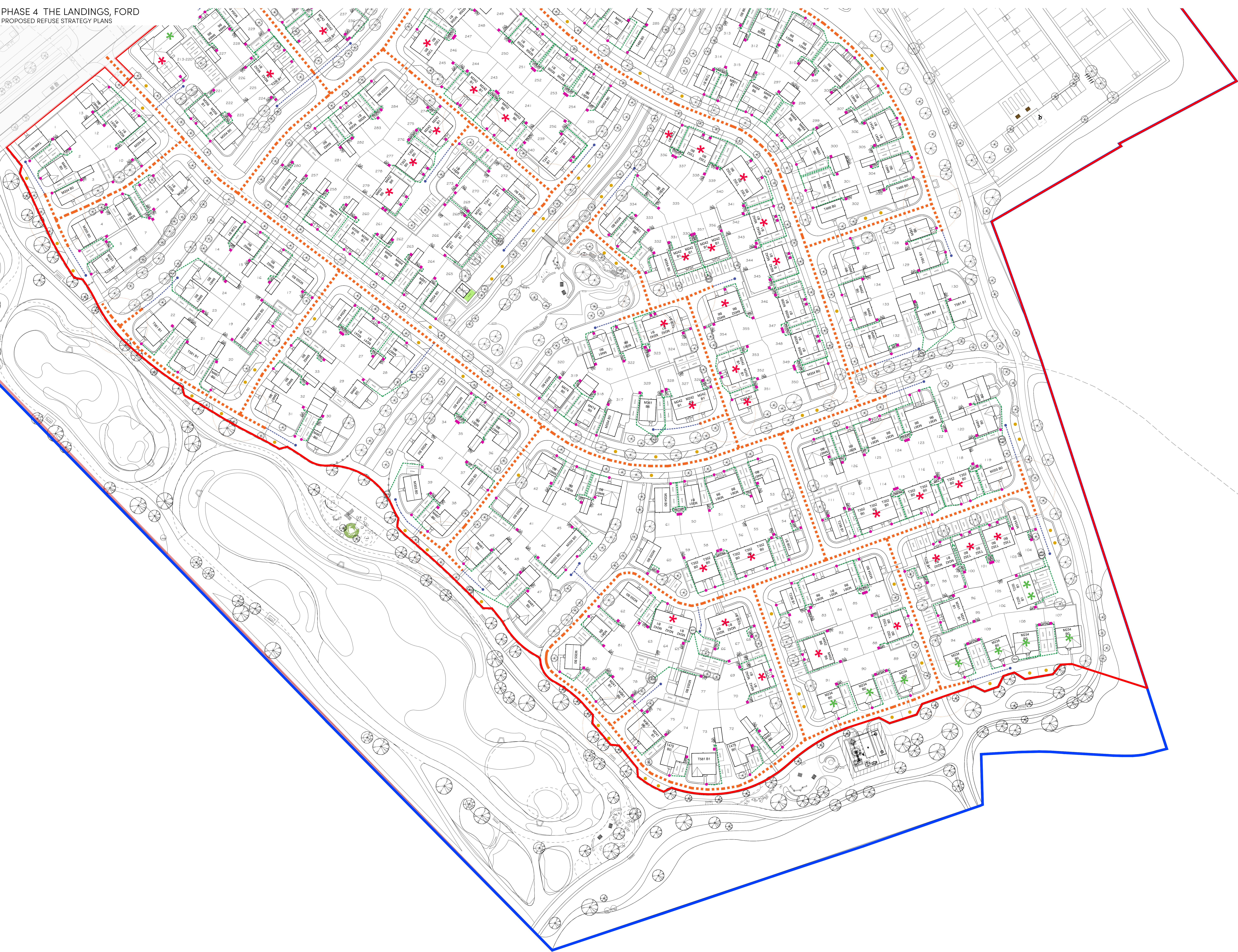




**KEY**

**REFUSE STRATEGY PLAN**

- House Owner Transfer Route [max 48m]
- Refuse Recycling Store Area
- Roadside Collection Point
- Bin Collection Point
- Local Authority Refuse - Truck Route [max 12m]
- Local Authority Refuse - Transfer Route [max 20m]



C	16-12-24	Layout Updated To Newest Site Plan Revision U	JW
B	16-02-24	Layout Updated To Newest Site Plan Revision J	CLP
A	13-08-24	Layout updated to suit the new redline boundary	YC
Rev	Date	Amendment	Initials

Project:  
PHASE 4, THE LANDINGS  
FORD, WEST SUSSEX

Client:  
VISTRY, SOUTH EAST

Drawing:  
PHASE 4  
PROPOSED REFUSE STRATEGY PLAN - B

Drawing no: 22.1706.2051 Rev: C

Scale: 1:500 Date: AUG 24 Drawn: CLP Checked: CH

**finc** Architects Ltd  
61-63 New London Road | Chesham | Essex | CM8 0ND  
T: +44 (0)1245 933989  
E: info@fincarchitects.com  
W: www.fincarchitects.com

Disclaimer: © Finc Architects Limited holds the copyright to all the information contained within this document and that without consent it is not to be obtained for copying or using the data other than for the purpose it was originally supplied.  
All dimensions and measurements to be checked on site.  
Do not scale from this drawing. This drawing is to be printed in colour.