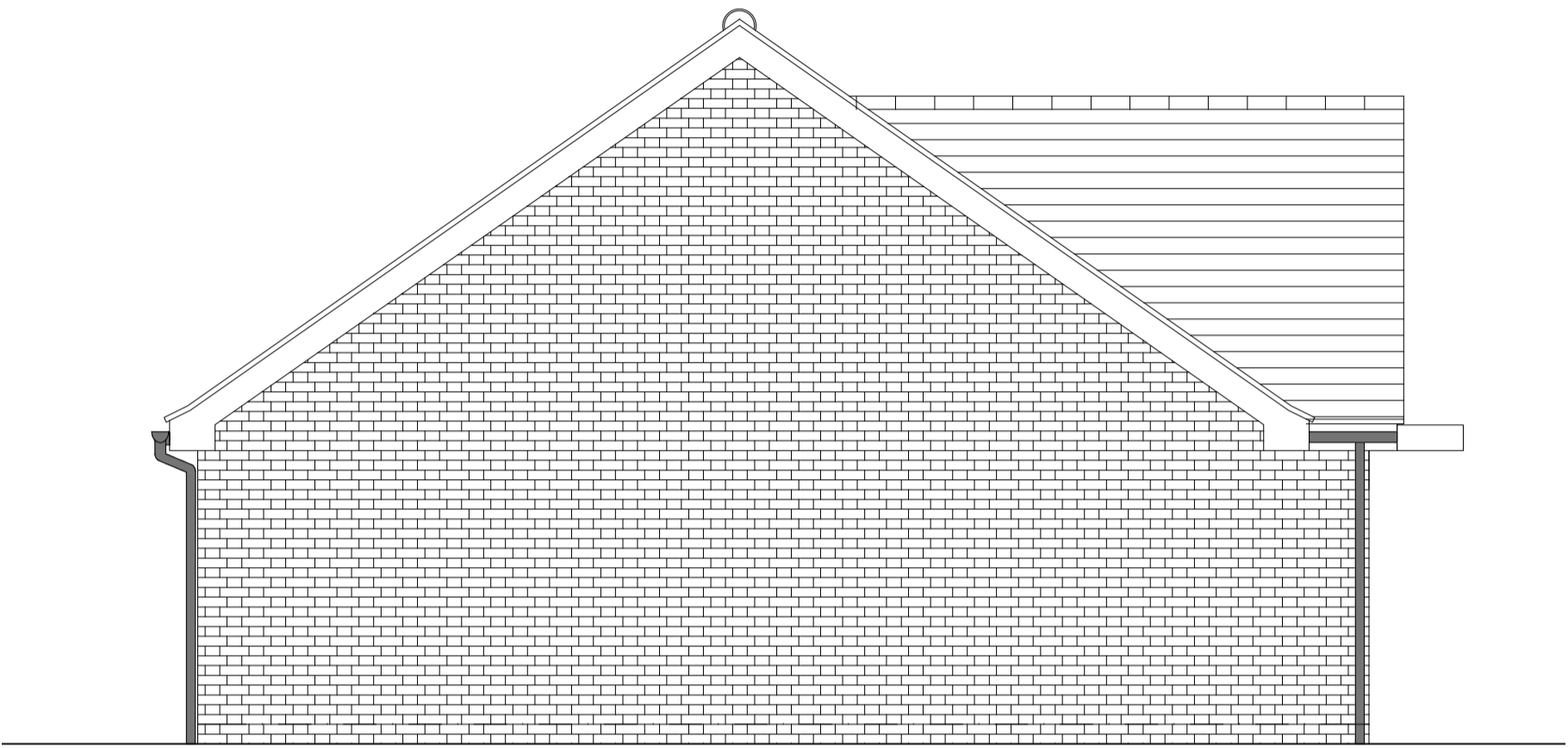


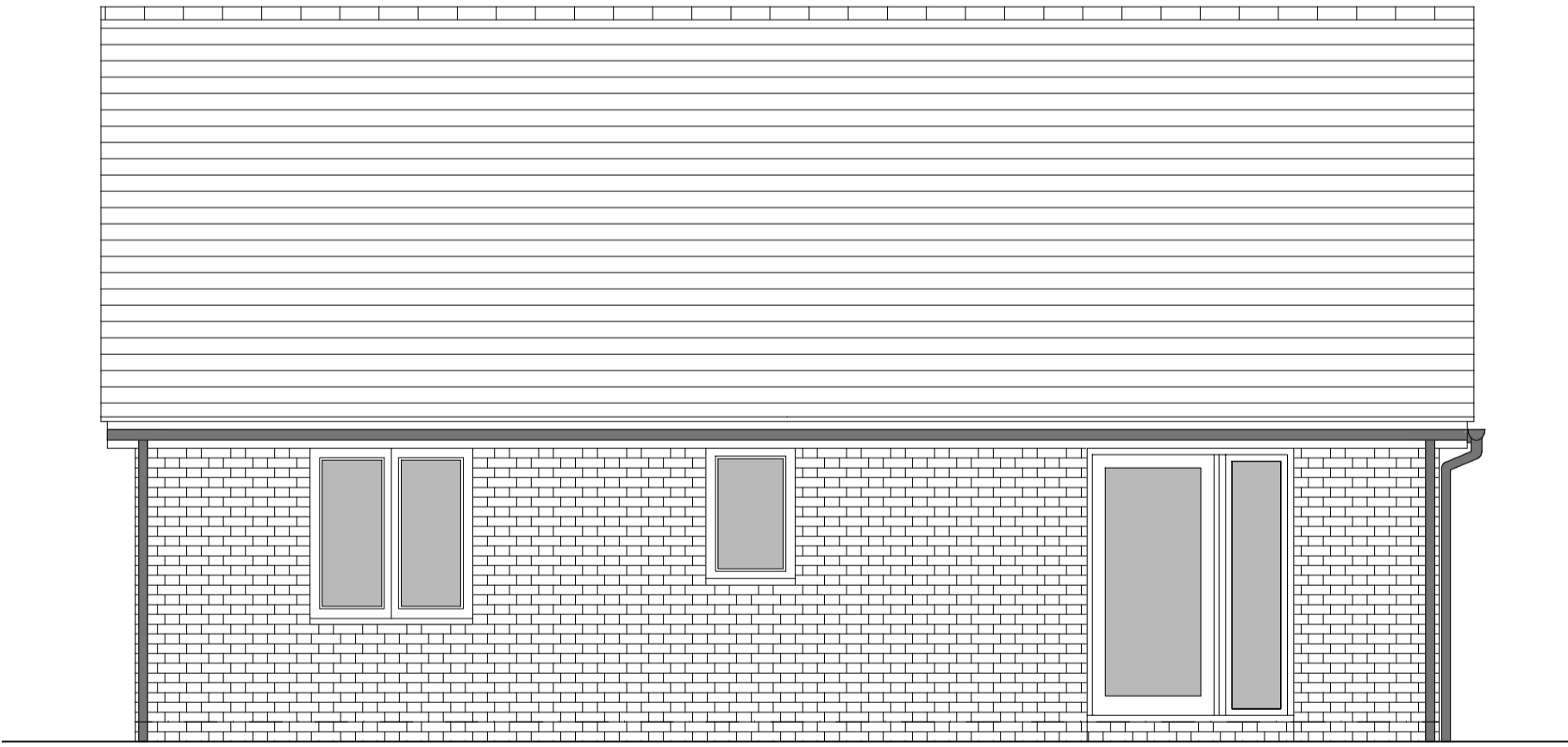
HOUSETYPE VARIATIONS		
PLOT NUMBERS:	AS DRAWN	- 90, 107
	HANDED	- 89, 108
MATERIALS:	WALLS	- FLEMISH BOND BRICK
	WALLS (TREATMENT)	-
	FENESTRATION	- UPVC
	OBSCURE WINDOWS	- BATHROOMS
	EXTERNAL DOORS	- UPVC
	OBSCURE DOORS	-
	ROOF	- TILE
	GUTTERING & DOWNPIPES	- UPVC
	FASCIA & SOFFITS	- UPVC
WINDOW OMISSION*:	PLOT(S)	- N/A
AREA OF UNIT (GIA):	74.1sqm	797sqft
B. REGS PART M:	M4(3)	
NDSS COMPLIANT:	YES	
CHARACTER AREA:	RYEBANK PARK	



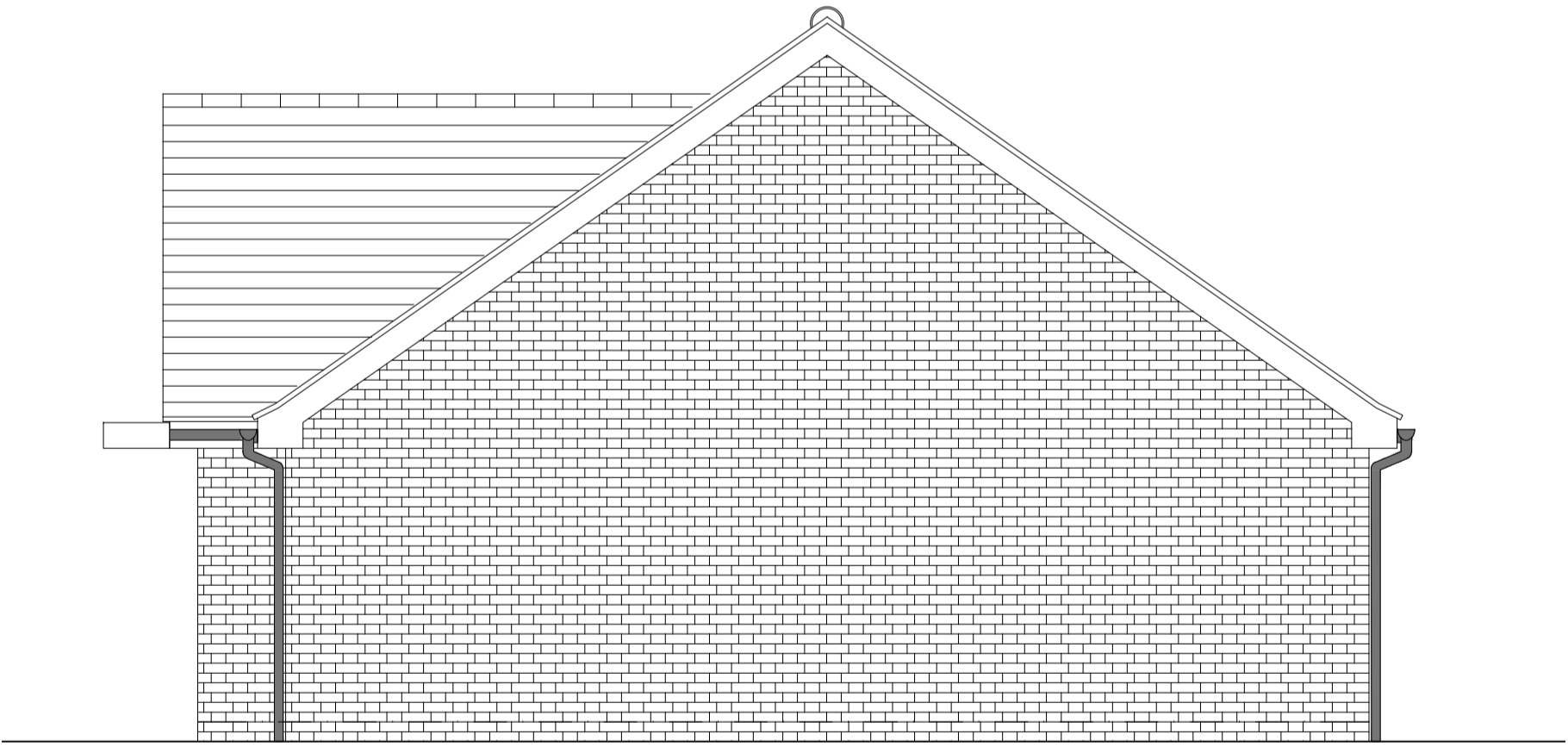
FRONT ELEVATION



SIDE ELEVATION



REAR ELEVATION



SIDE ELEVATION

Rev	Date	Amendment	Initials
Project: PHASE 4 THE LANDINGS FORD, WEST SUSSEX			
Client: VISTRY SOUTH EAST			
Drawing: PROPOSED HOUSETYPE ELEVATIONS HT - "234" VARIANT "V1"			
Drawing no: 22.1706.4301		Rev: -	
Scale@A1: 1:50	Date: AUG 24	Drawn: JC	Checked: CH

	FINC Architects Ltd		
	61-63 New London Road Chelmsford Essex CM2 0ND		
	T: +44 (0)1245 933988		
	W: www.fincarchitects.com		
	E: company@fincarchitects.com		

© FINC Architects Limited holds the copyright to all the information contained within this document and their written consent must be obtained before copying or using the data other than for the purpose it was originally supplied.
All dimensions and measurements to be checked on site.
Do not scale from this drawing. This drawing is to be printed in colour.