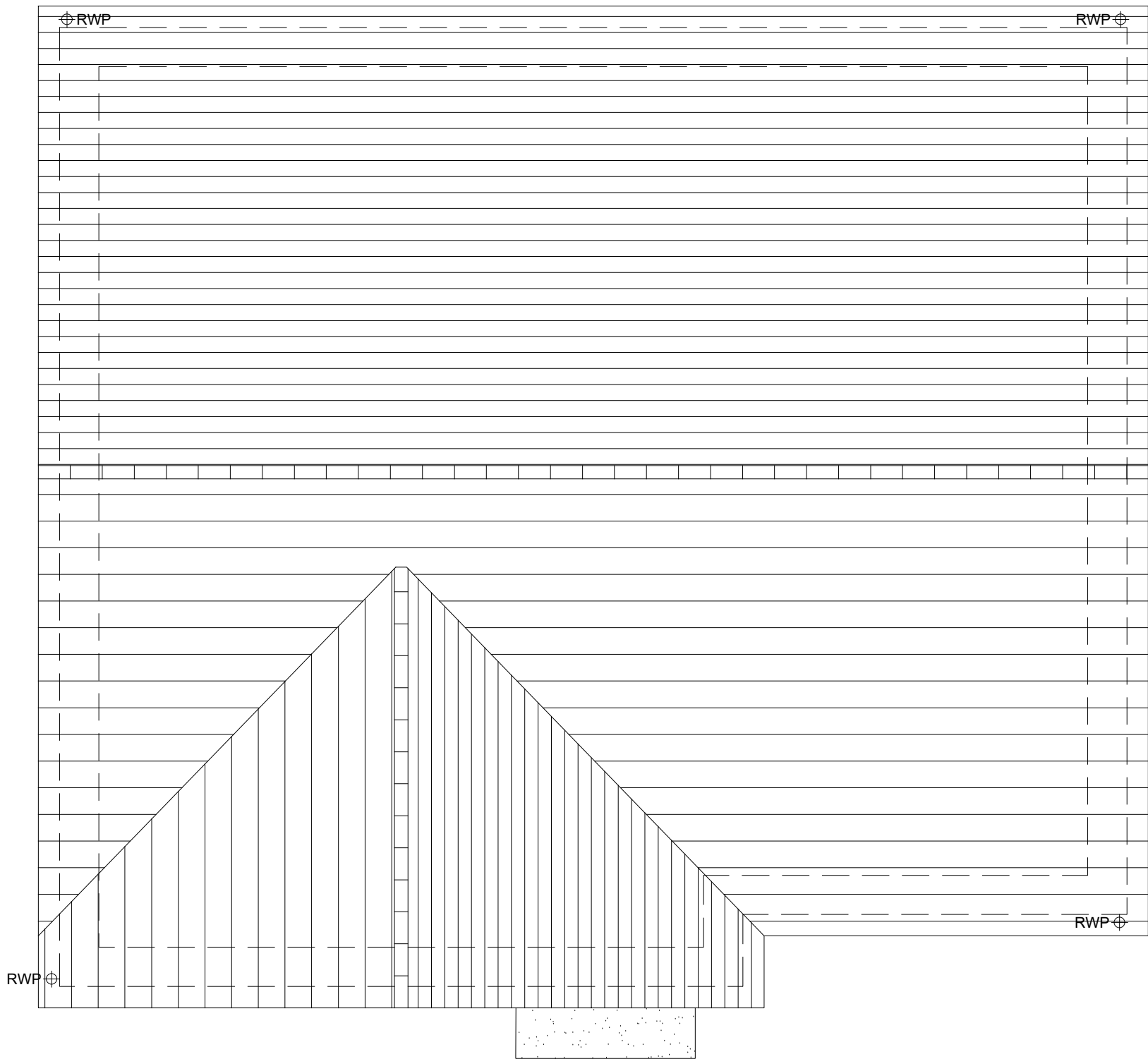


PHASE 4 THE LANDINGS, FORD, WEST SUSSEX
PROPOSED HOUSETYPE PLANS - HT "234" VARIANT "V1"



GROUND FLOOR PLAN



ROOF PLAN

HOUSETYPE VARIATIONS		
PLOT NUMBERS:	AS DRAWN	- 90, 107
	HANDED	- 89, 108
MATERIALS:	WALLS	- FLEMISH BOND BRICK
	WALLS (TREATMENT)	-
	FENESTRATION	- UPVC
	OBSCURER WINDOWS	- BATHROOMS
	EXTERNAL DOORS	- UPVC
	OBSCURER DOORS	-
	ROOF	- TILE
WINDOW OMISSION*:	PLOT(S)	- N/A
AREA OF UNIT (GIA):	74.1sqm	797sqft
B. REGS PART M:	M4(3)	
NDSS COMPLIANT:	YES	
CHARACTER AREA:	RYEBANK PARK	



Rev	Date	Amendment	Initials
Project: PHASE 4 THE LANDINGS FORD, WEST SUSSEX			
Client: VISTRY SOUTH EAST			
Drawing: PROPOSED HOUSETYPE PLANS HT - "234" VARIANT "V1"			
Drawing no:		Rev:	
22.1706.4300		-	
Scale@A1:	1:50	Date:	AUG 24
Drawn:	JC	Checked:	CH

finc

61-63 New London Road | Chelmsford | Essex | CM2 0ND
T: +44 (0)1245 933686
W: www.fincarchitects.com
E: company@fincarchitects.com

Disclaimers:
© Finc Architects Limited holds the copyright to all the information contained within this document and their written consent must be obtained before copying or using the data other than for the purpose it was originally supplied.
All dimensions and measurements to be checked on site.
Do not scale from this drawing. This drawing is to be printed in colour.

PLANNING ISSUE