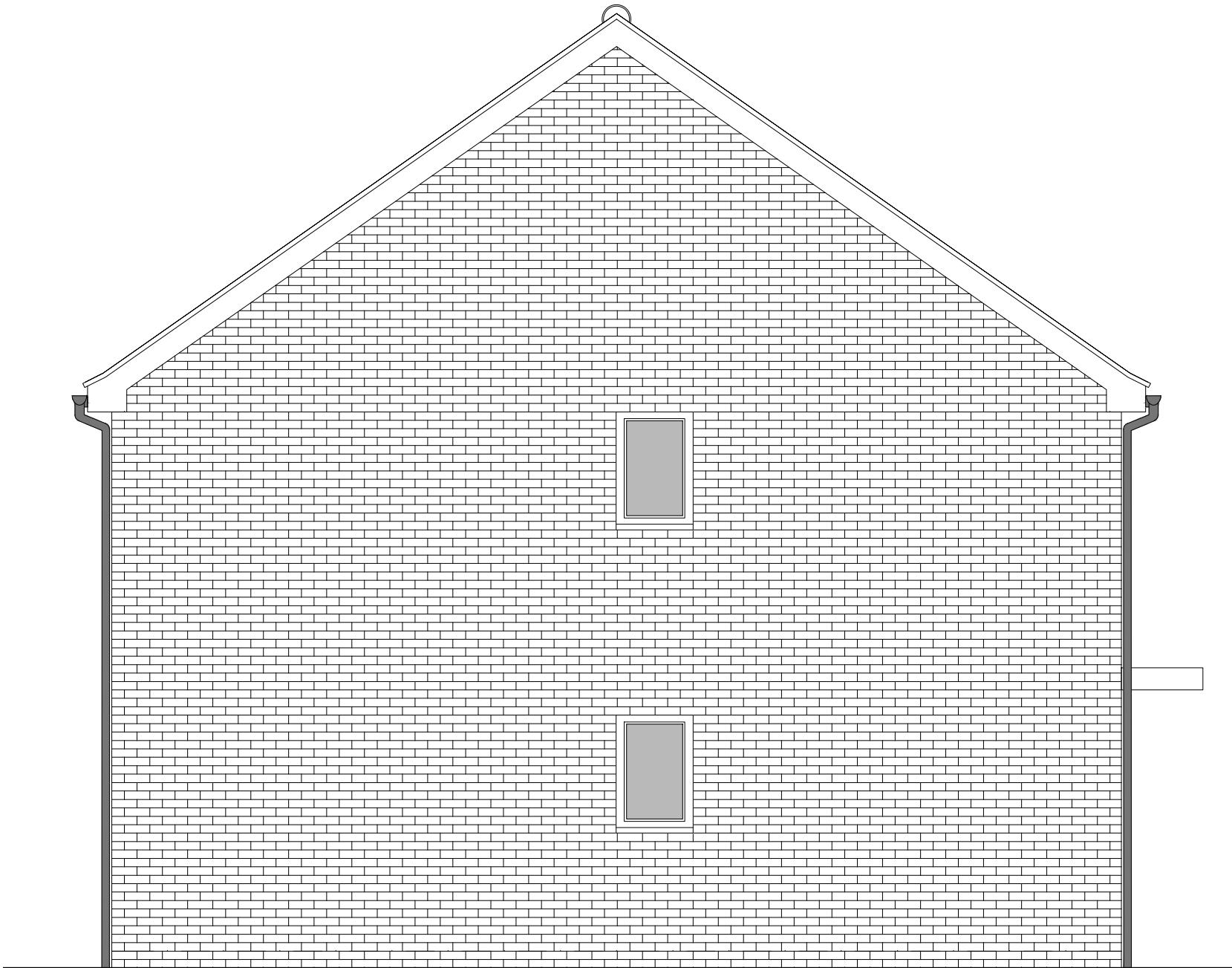


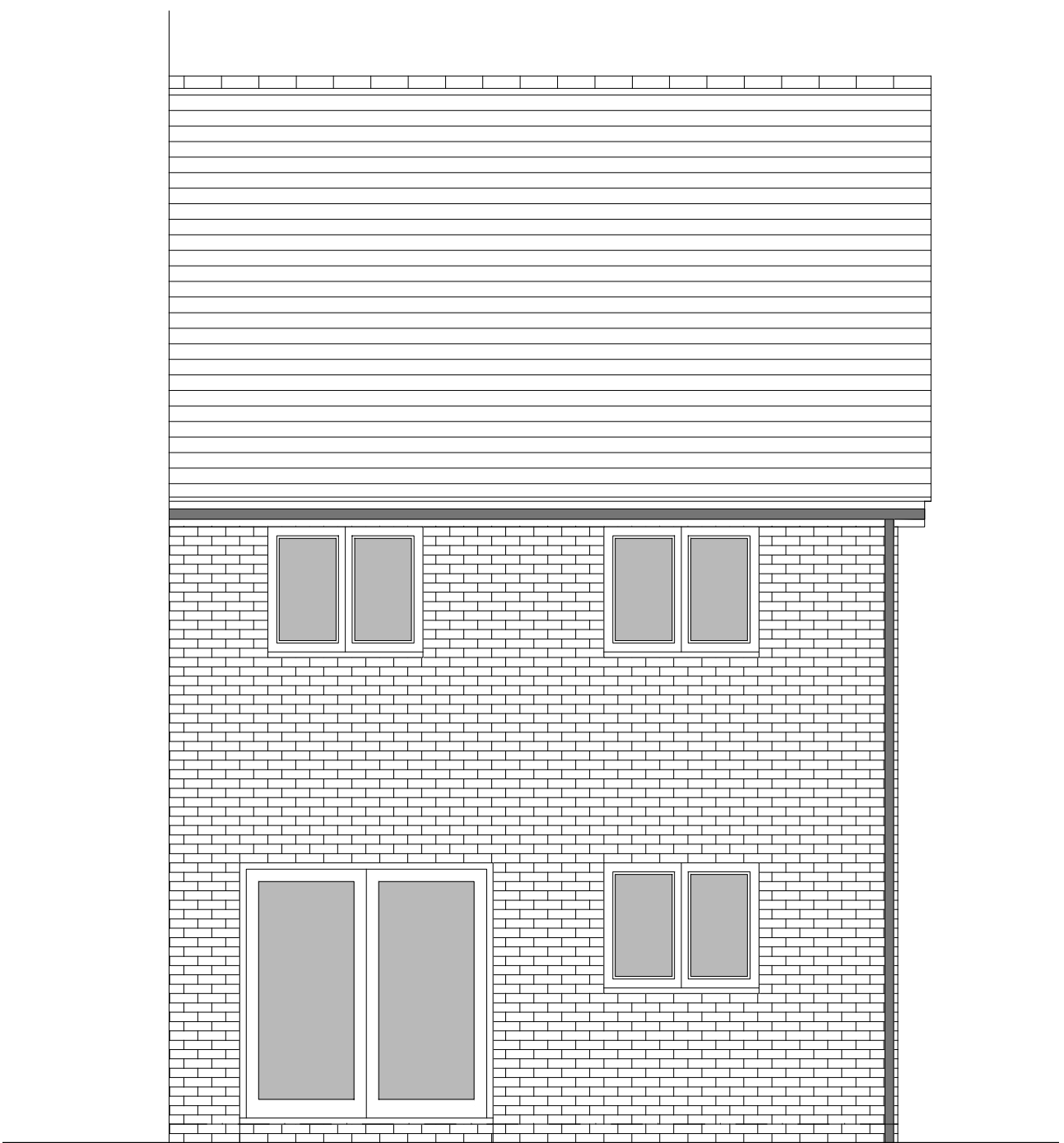
PHASE 4 THE LANDINGS, FORD, WEST SUSSEX
PROPOSED HOUSETYPE PLANS & ELEVATIONS - HT "341" VARIANT "V3"



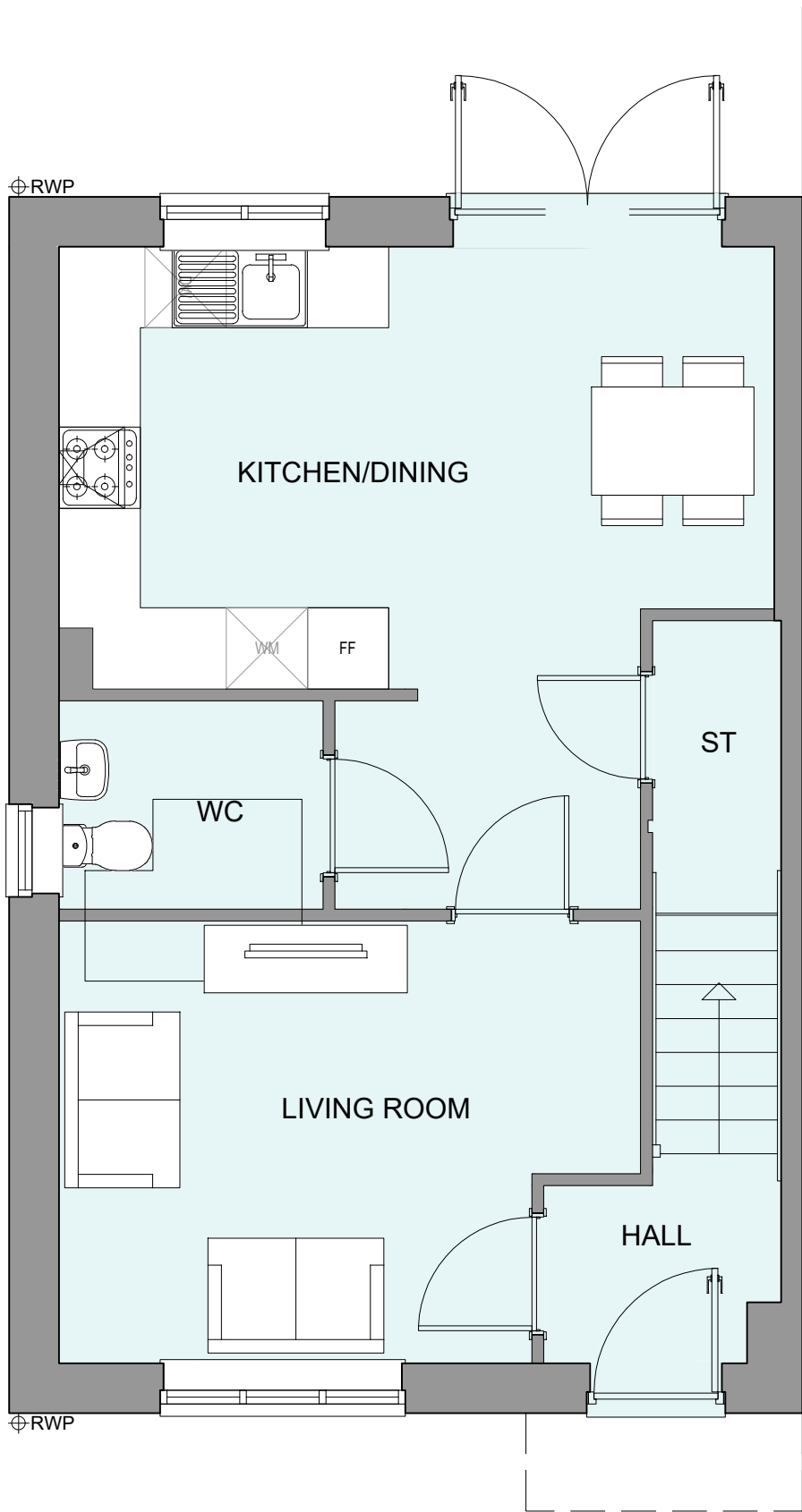
FRONT ELEVATION



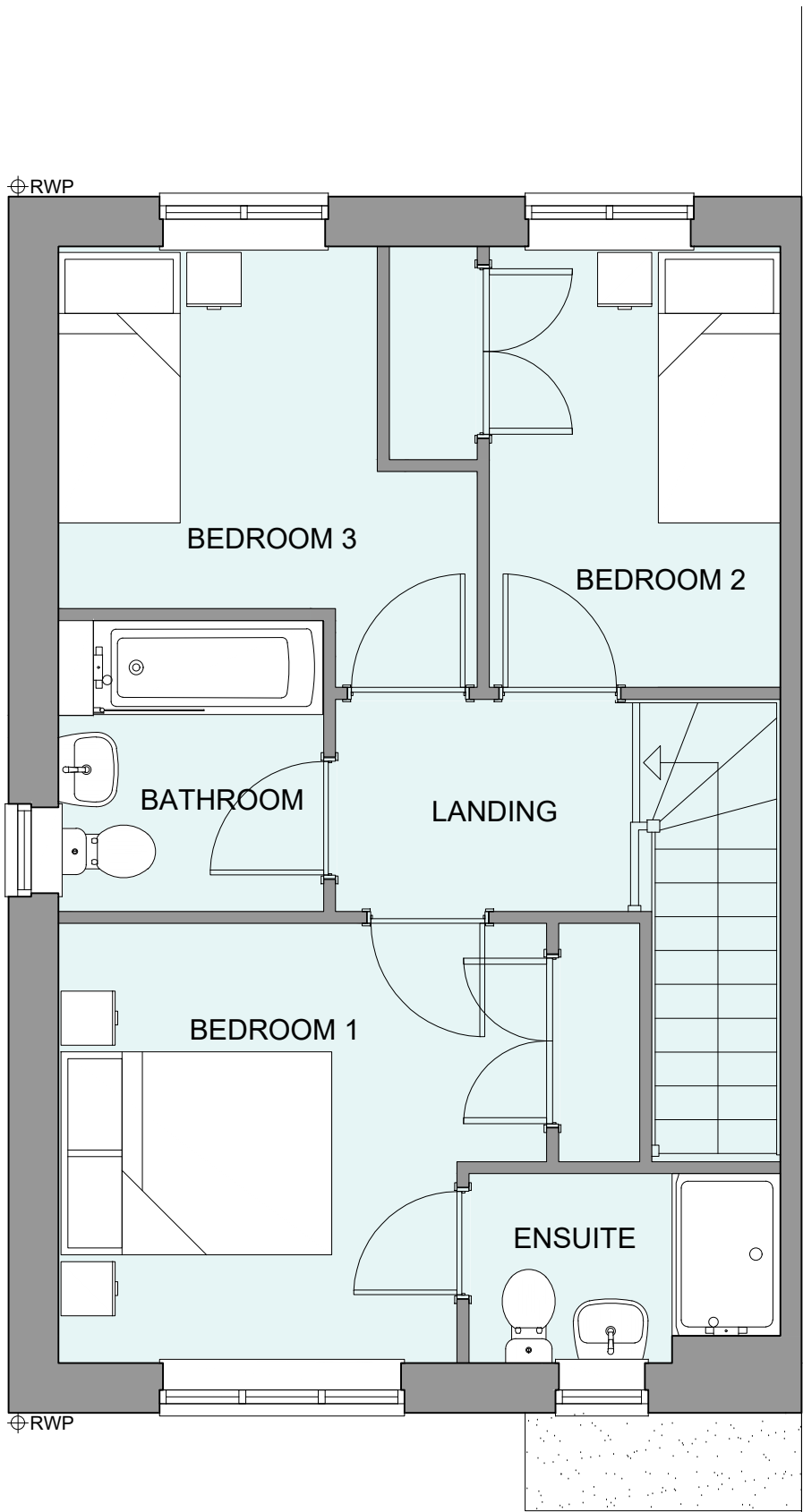
SIDE ELEVATION 1



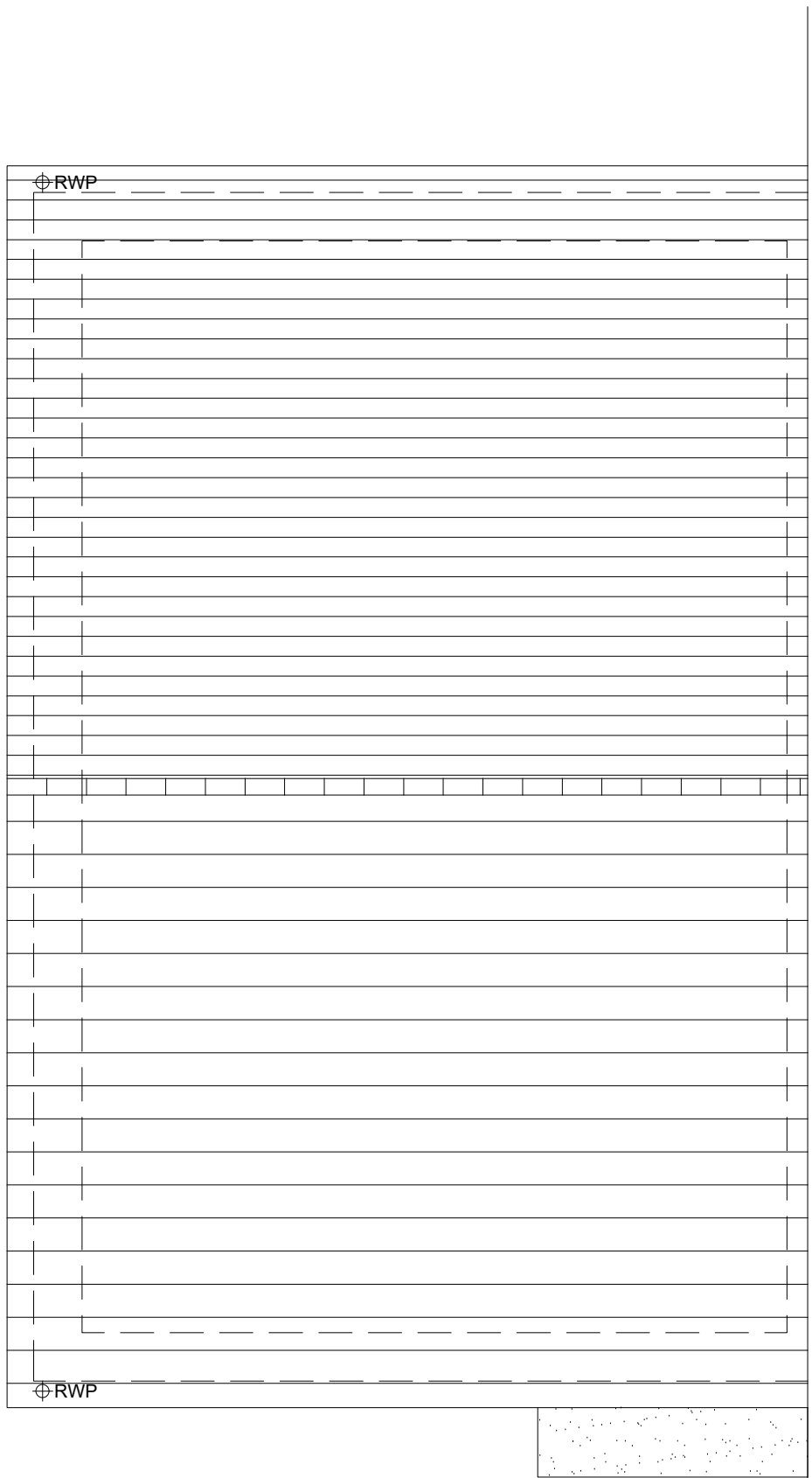
REAR ELEVATION



GROUND FLOOR PLAN



FIRST FLOOR PLAN



ROOF PLAN

HOUSETYPE VARIATIONS			
PLOT NUMBERS:	AS DRAWN	-	88. 105
	HANDED	-	87. 104
MATERIALS:	WALLS	-	BRICK
	WALLS (TREATMENT)	-	
	FENESTRATION	-	UPVC
	OBSCURER WINDOWS	-	BATHROOMS & ENSUITES
	EXTERNAL DOORS	-	UPVC
	OBSCURER DOORS	-	
	ROOF	-	TILE
WINDOW OMISSION*:	GUTTERING & DOWNPIPES	-	UPVC
	FASCIA & SOFFITS	-	UPVC
WINDOW OMISSION*:	PLOT(S)	-	N/A
	AREA OF UNIT (GIA):	88.0sqm	948sqft
B. REGS PART M:			
M4(2)			
NDSS COMPLIANT:			
YES			
CHARACTER AREA:			
RYEBANK PARK			



A				21.08.24	Side Elev window surrounds removed	JC
Rev	Date	Amendment				Initials
Project:						
PHASE 4 THE LANDINGS						
FORD, WEST SUSSEX						
Client:						
VISTRY SOUTH EAST						
Drawing:						
PROPOSED HOUSETYPE PLANS & ELEVATIONS						
HT - "341" VARIANT "V3"						
Drawing no:						
22.1706.4402						
Rev:						
A						
Scale@A1: 1:50						
Date:	AUG 24	Drawn:	JC	Checked:	CH	
FINC Architects Ltd						
61-63 New London Road Chelmsford Essex CM2 0ND						
T: +44 (0)1245 933888						
W: www.fincarchitects.com						
E: company@fincarchitects.com						

Disclaimers: © FINC Architects Limited holds the copyright to all the information contained within this document and their written consent must be obtained before copying or using the data other than for the purpose it was originally supplied.
All dimensions and measurements to be checked on site.
Do not scale from this drawing. This drawing is to be printed in colour.