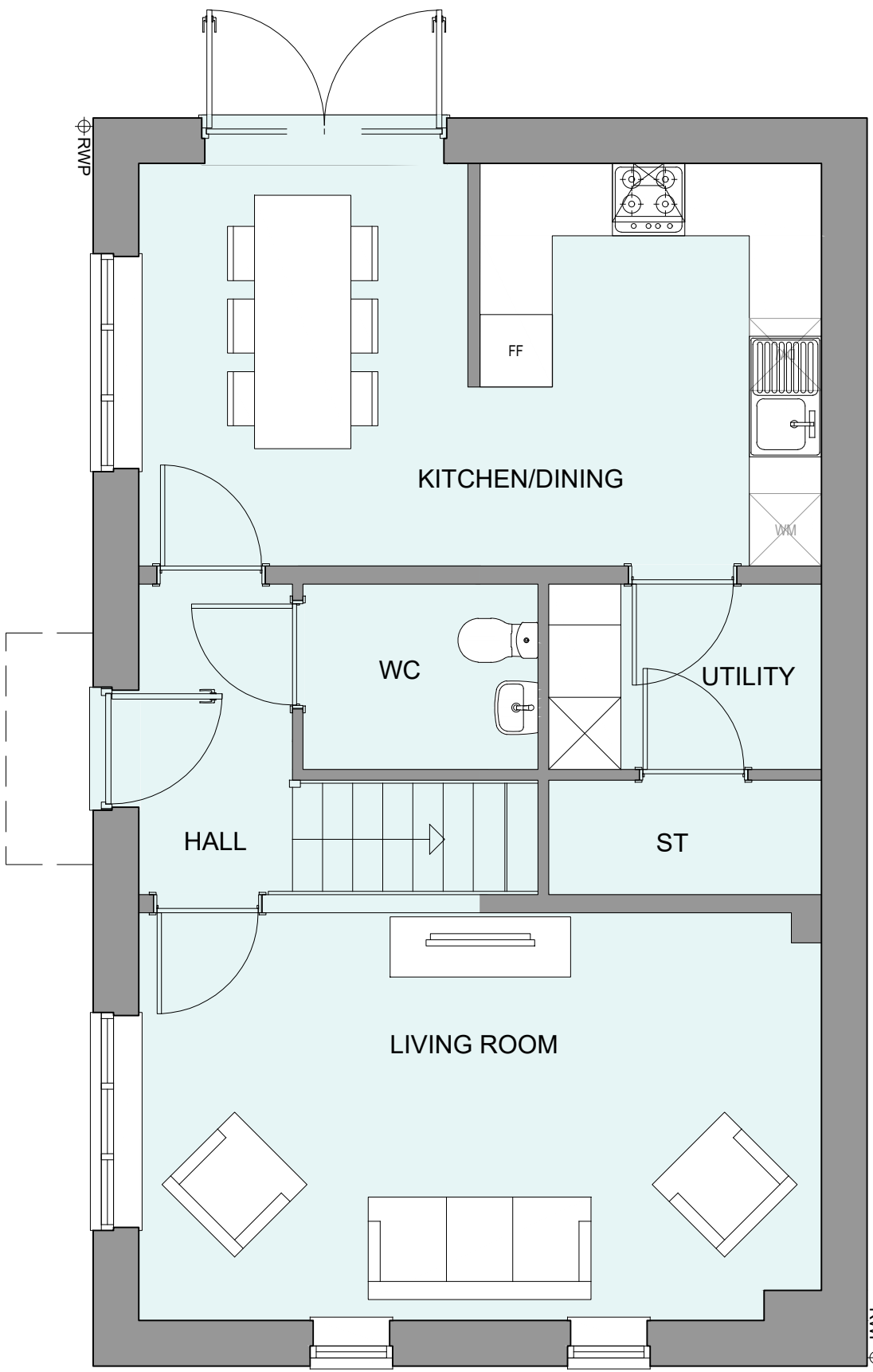
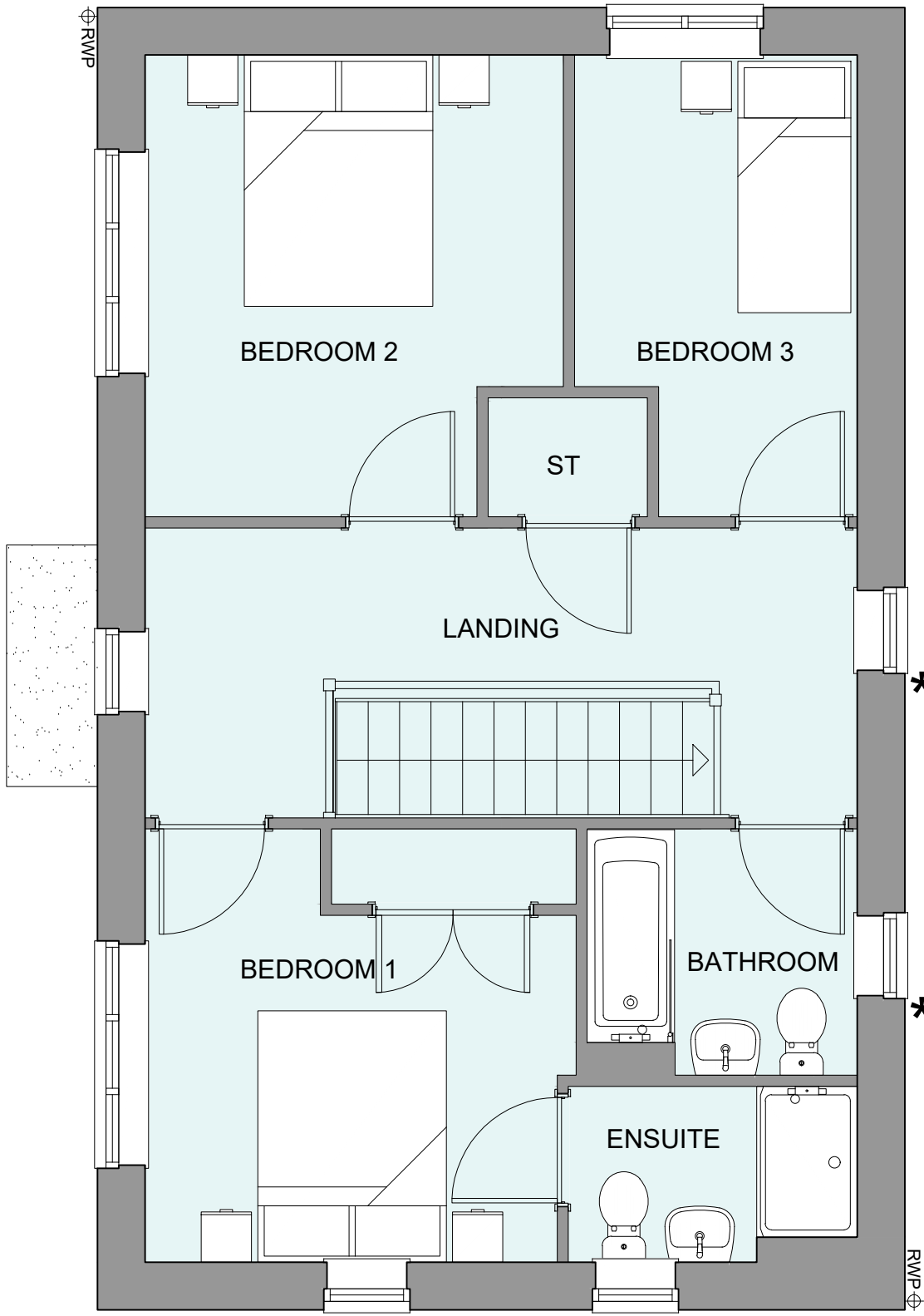


PHASE 4 THE LANDINGS, FORD, WEST SUSSEX
PROPOSED HOUSETYPE PLANS - HT "354" VARIANT "V8"

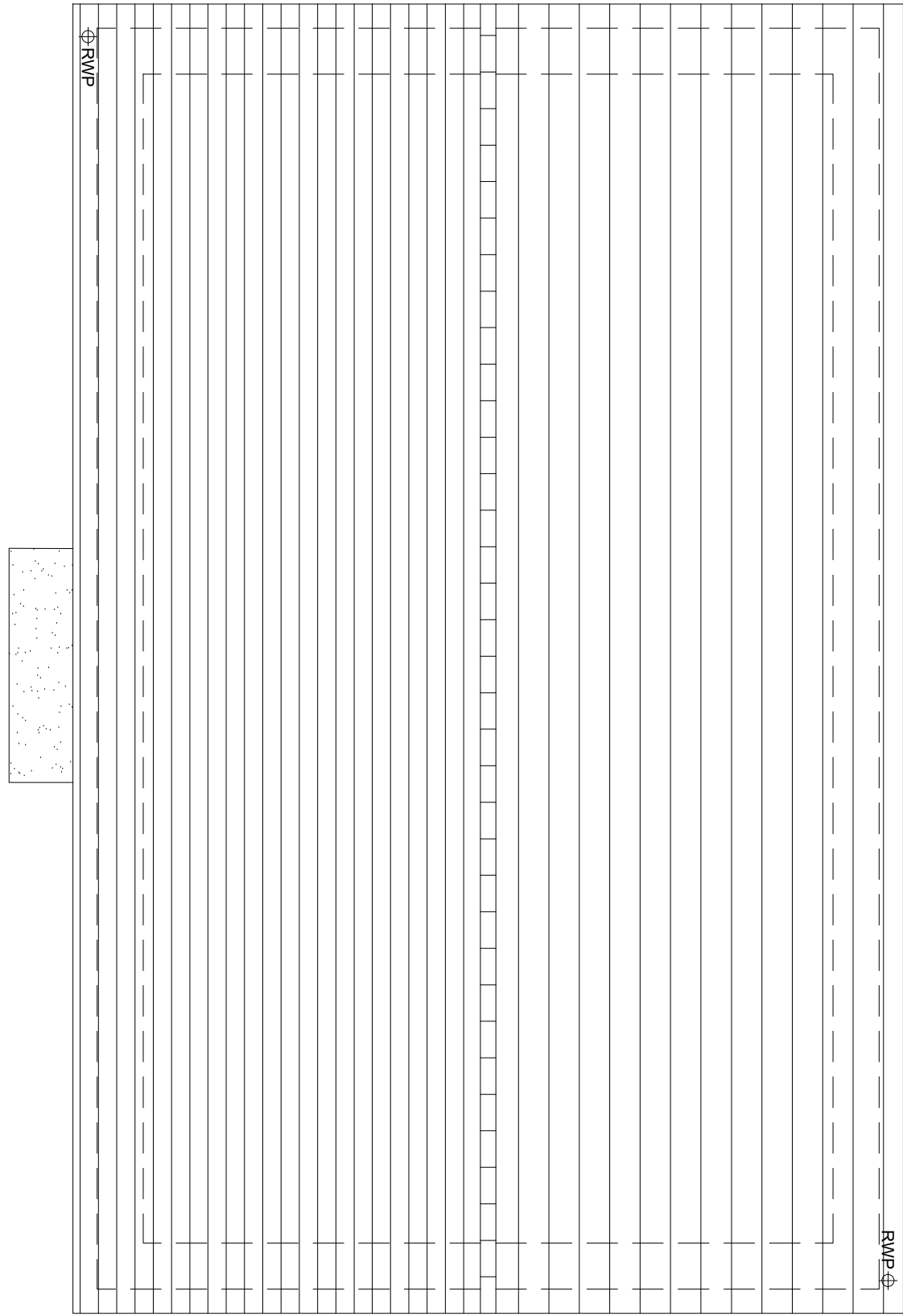
HOUSETYPE VARIATIONS		
PLOT NUMBERS:	AS DRAWN	- 282, 297, 334
	HANDED	- 265
MATERIALS:	WALLS	- BRICK
	WALLS (TREATMENT)	- TILE HANGING
	FENESTRATION	- UPVC
	OBSCURERINDOWS	- BATHROOMS & ENSUITES
	EXTERNAL DOORS	- UPVC
	OBSCUREDOORS	-
	ROOF	- TILE
WINDOW OMISSION*:	GUTTERING & DOWNPIPES	- UPVC
	FASCIA & SOFFITS	- UPVC
WINDOW OMISSION*:	PLOT(S)	- 282
	AREA OF UNIT (GIA):	108.9sqm 1172sqft
B. REGS PART M:	M4(2)	
	NDSS COMPLIANT:	YES
CHARACTER AREA:		RUNWAY PARK



GROUND FLOOR PLAN



FIRST FLOOR PLAN



ROOF PLAN



A	21.08.24	Rwp positions adjusted	JC
Rev	Date	Amendment	Initials
Project:			
PHASE 4 THE LANDINGS			
FORD, WEST SUSSEX			
Client:			
VISTRY SOUTH EAST			
Drawing:			
PROPOSED HOUSETYPE PLANS			
HT - "354" VARIANT "V8"			
Drawing no:		Rev:	
22.1706.4564		A	
Scale@A1:	1:50	Date:	AUG 24
Drawn:	JC	Checked:	CH

finc Architects Ltd
61-63 New London Road | Chelmsford | Essex | CM2 0ND
T: +44 (0)1245 933686
W: www.fincarchitects.com
E: company@fincarchitects.com

Disclaimer: © Finc Architects Limited holds the copyright to all the information contained within this document and their written consent must be obtained before copying or using the data other than for the purpose it was originally supplied.
All dimensions and measurements to be checked on site.
Do not scale from this drawing. This drawing is to be printed in colour.

PLANNING ISSUE