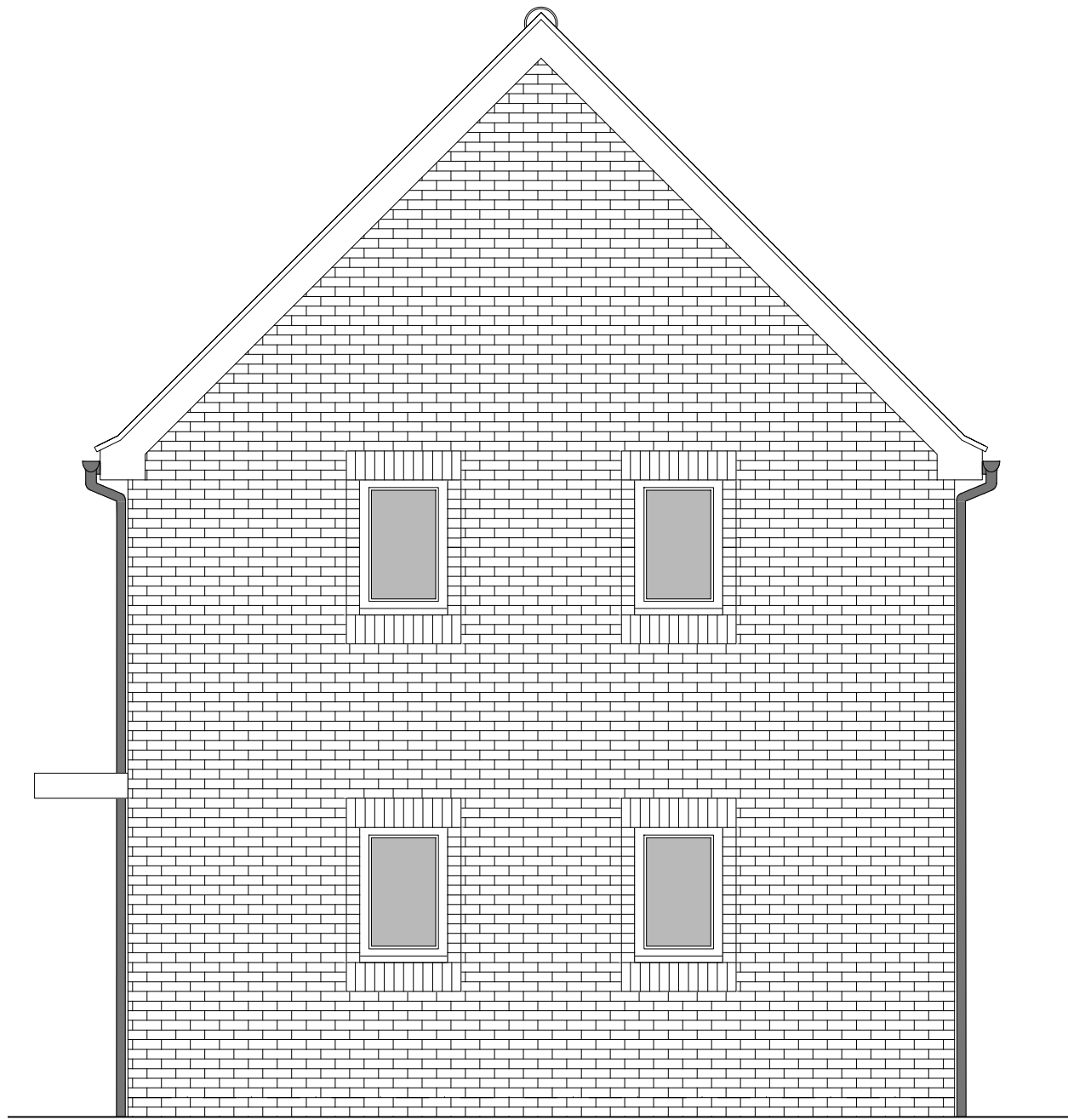


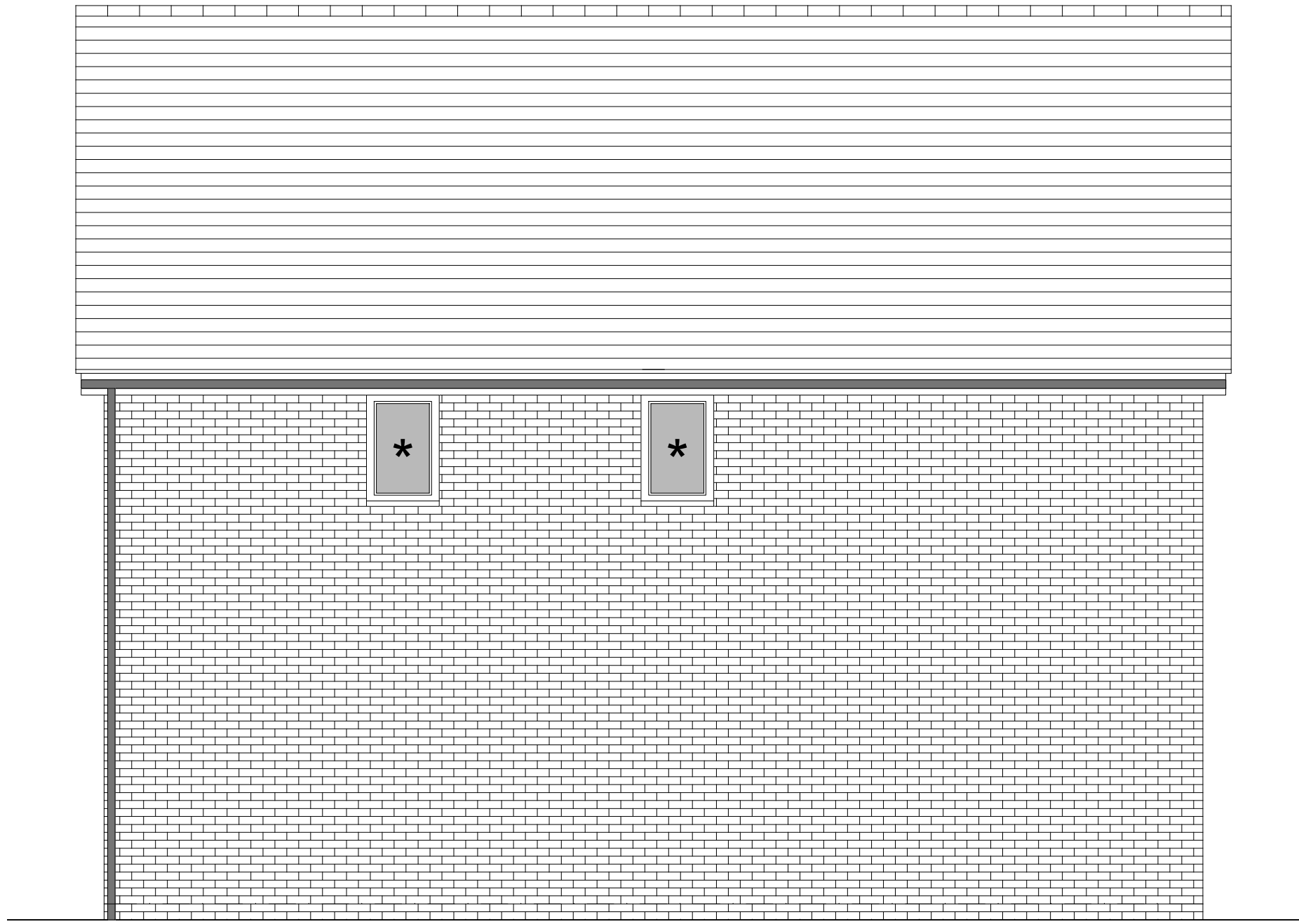
PHASE 4 THE LANDINGS, FORD, WEST SUSSEX
PROPOSED HOUSETYPE ELEVATIONS - HT "354" VARIANT "V9"



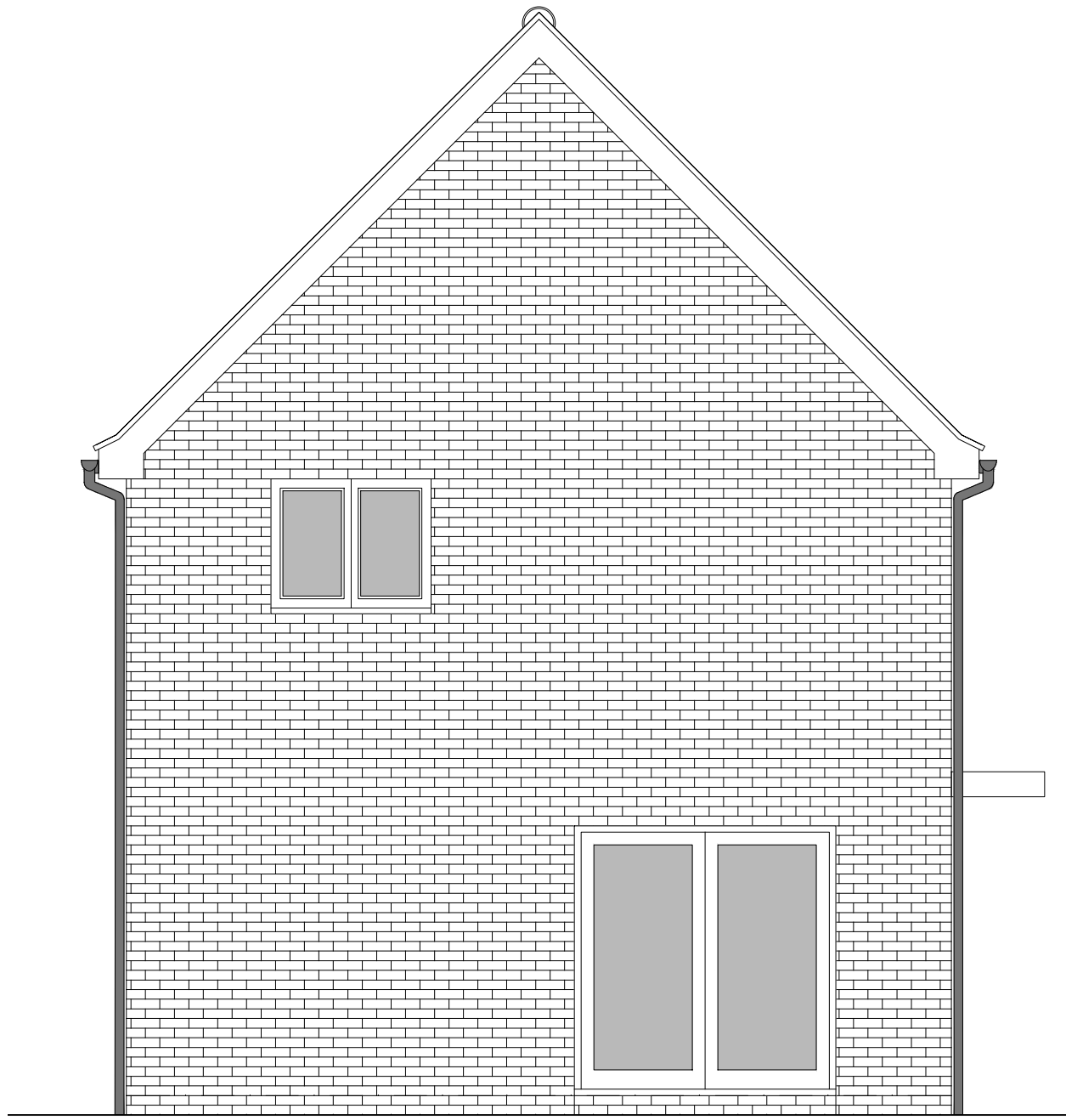
FRONT ELEVATION



SIDE ELEVATION 1



REAR ELEVATION



SIDE ELEVATION 2

HOUSETYPE VARIATIONS		
PLOT NUMBERS:	AS DRAWN	- 10, 86
	HANDED	- 94
MATERIALS:	WALLS	- BRICK
	WALLS (TREATMENT)	-
	FENESTRATION	- UPVC
	OBSCURER WINDOWS	- BATHROOMS & ENSUITES
	EXTERNAL DOORS	- UPVC
	OBSCURER DOORS	-
	ROOF	- TILE
WINDOW OMISSION*:	GUTTERING & DOWNPIPES	- UPVC
	FASCIA & SOFFITS	- UPVC
WINDOW OMISSION*:	PLOT(S)	- 94
	AREA OF UNIT (GIA):	108.9sqm 1172sqft
B. REGS PART M:	M4(2)	
	NDSS COMPLIANT:	YES
CHARACTER AREA:		RYEBANK PARK



A	21.08.24	Adapted To Suit Material Plan Changes & rwp positions adjusted	JC
Rev	Date	Amendment	Initials
Project:			
PHASE 4 THE LANDINGS			
FORD, WEST SUSSEX			
Client:			
VISTRY SOUTH EAST			
Drawing:			
PROPOSED HOUSETYPE ELEVATIONS			
HT - "354" VARIANT "V9"			
Drawing no:			Rev:
22.1706.4567			A
Scale@A1:	1:50	Date:	AUG 24
Drawn:	JC	Checked:	CH

finc

61-63 New London Road | Chelmsford | Essex | CM2 0ND
T: +44 (0)1245 933988
W: www.fincarchitects.com
E: company@fincarchitects.com

Disclaimer: © Finc Architects Limited holds the copyright to all the information contained within this document and their written consent must be obtained before copying or using the data other than for the purpose it was originally supplied.
All dimensions and measurements to be checked on site.
Do not scale from this drawing. This drawing is to be printed in colour.

PLANNING ISSUE