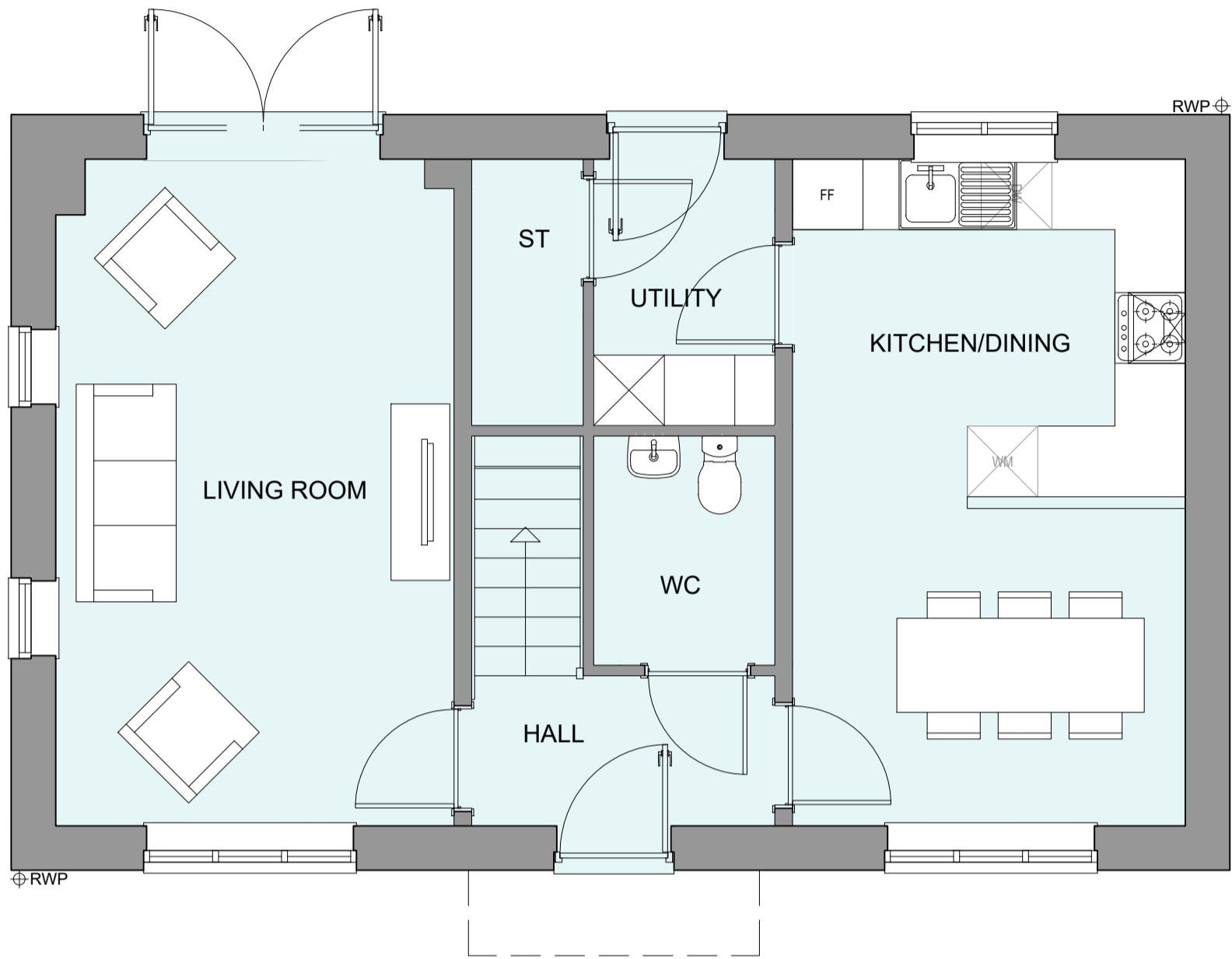
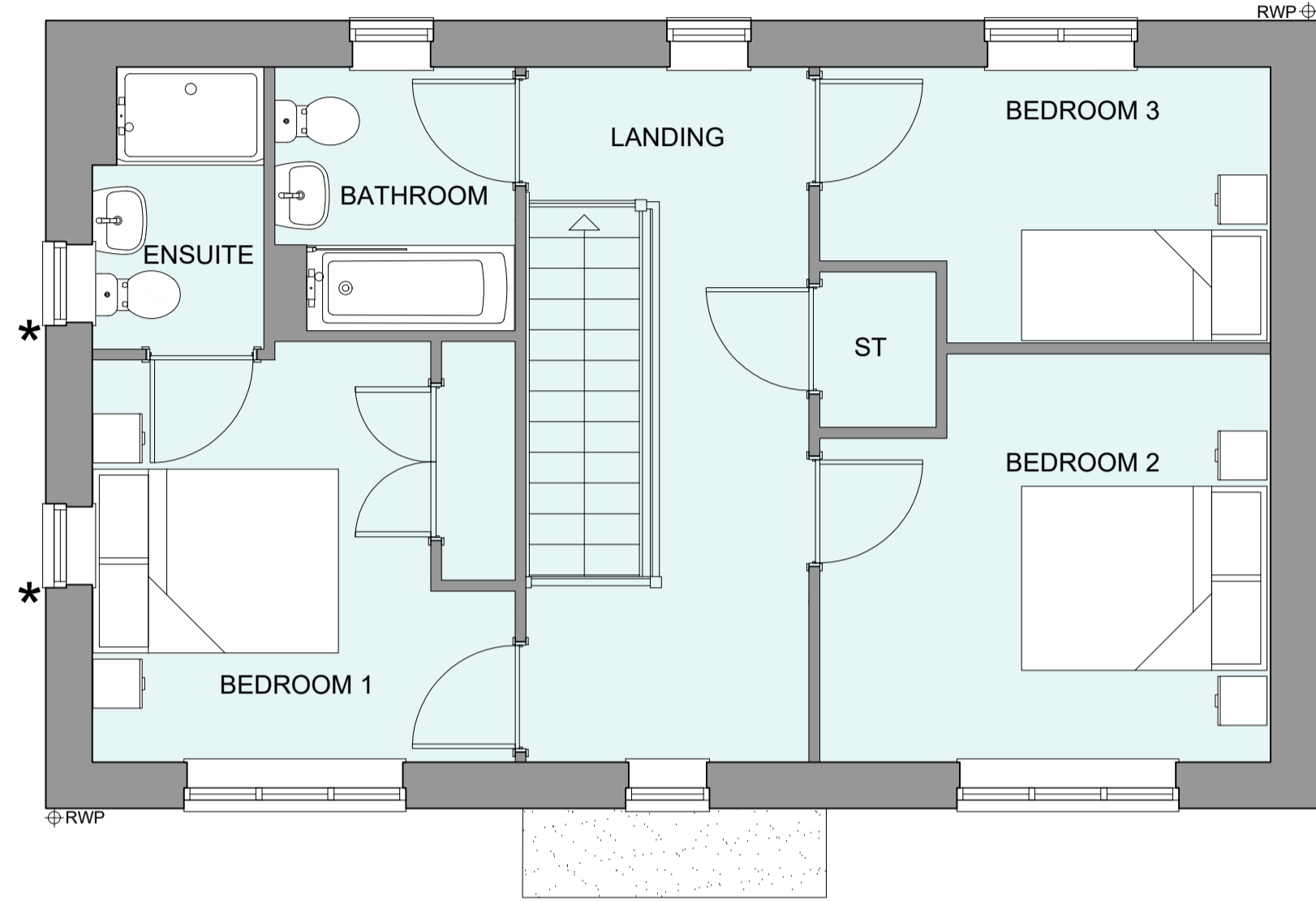


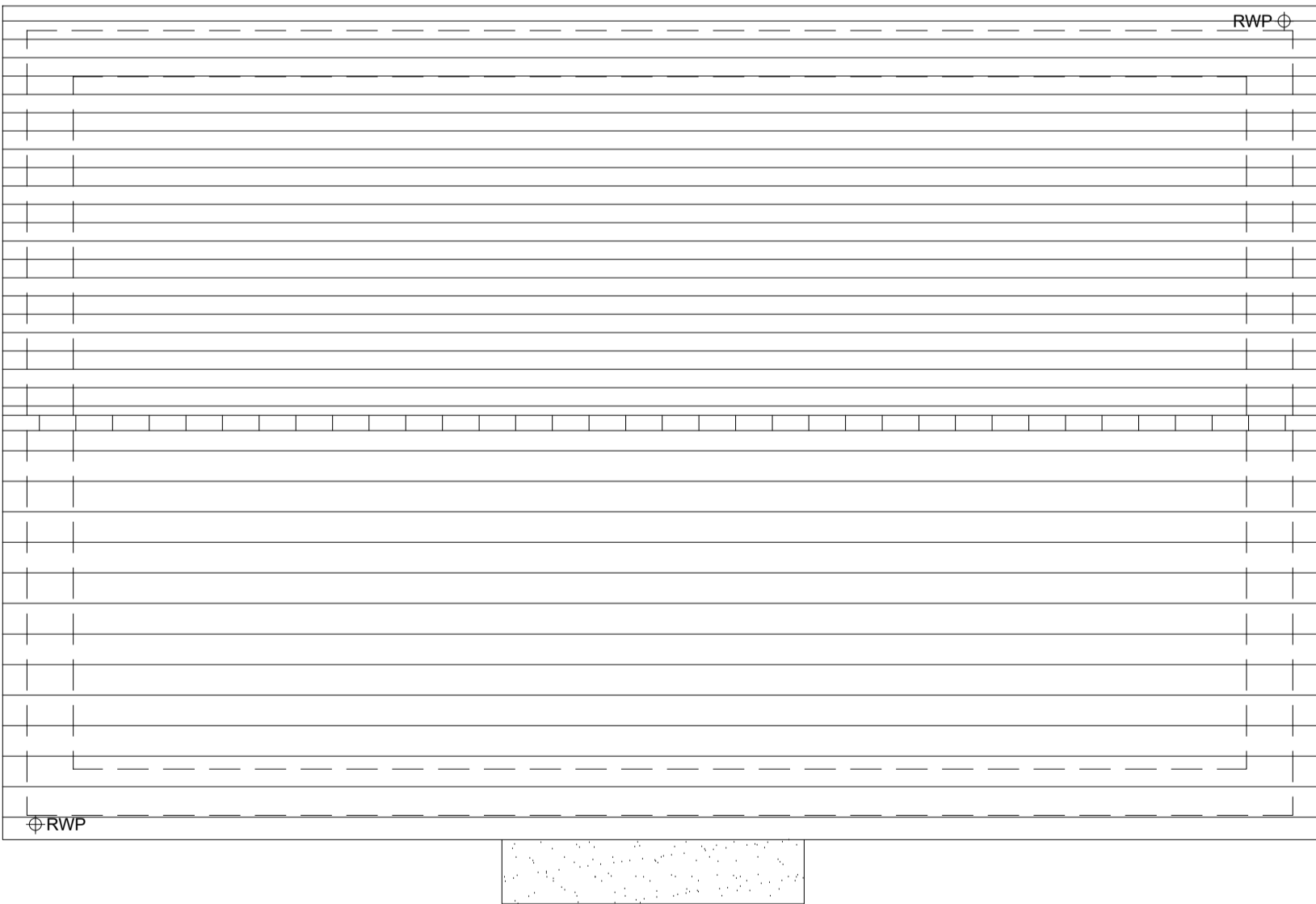
PHASE 4 THE LANDINGS, FORD, WEST SUSSEX
PROPOSED HOUSETYPE PLANS - HT "355" VARIANT "V2"



GROUND FLOOR PLAN



FIRST FLOOR PLAN



ROOF PLAN

HOUSETYPE VARIATIONS		
PLOT NUMBERS:	AS DRAWN	-
	HANDED	- 184, 273, 328
MATERIALS:	WALLS	- BRICK
	WALLS (TREATMENT)	-
	FENESTRATION	- UPVC
	OBSURE WINDOWS	- BATHROOMS & ENSUITES
	EXTERNAL DOORS	- UPVC
	OBSURE DOORS	- UTILITY ROOM
	ROOF	- TILE
	GUTTERING & DOWNPIPES	- UPVC
	FASCIA & SOFFITS	- UPVC
WINDOW OMISSION*:	PLOT(S)	- 328
AREA OF UNIT (GIA):	108.9sqm	1172sqft
B. REGS PART M:	M4(2)	
NDSS COMPLIANT:	YES	
CHARACTER AREA:	RUNWAY PARK	



A	22.08.24	Rwp positions adjusted	JC
Rev	Date	Amendment	Initials
Project:			
PHASE 4 THE LANDINGS			
FORD, WEST SUSSEX			
Client:			
VISTRY SOUTH EAST			
Drawing:			
PROPOSED HOUSETYPE PLANS			
HT - "355" VARIANT "V2"			
Drawing no:		Rev:	
22.1706.4602		A	
Scale@A1:	1:50	Date:	AUG 24
Drawn:	CLP	Checked:	CH

finc	
61-63 New London Road Chelmsford Essex CM2 0ND	
T: +44 (0)1245 933888	
W: www.fincarchitects.com	
E: company@fincarchitects.com	

© FINEC Architects Limited holds the copyright to all the information contained within this document and their written consent must be obtained before copying or using the data other than for the purpose it was originally supplied.

All dimensions and measurements to be checked on site.

Do not scale from this drawing. This drawing is to be printed in colour.

PLANNING ISSUE