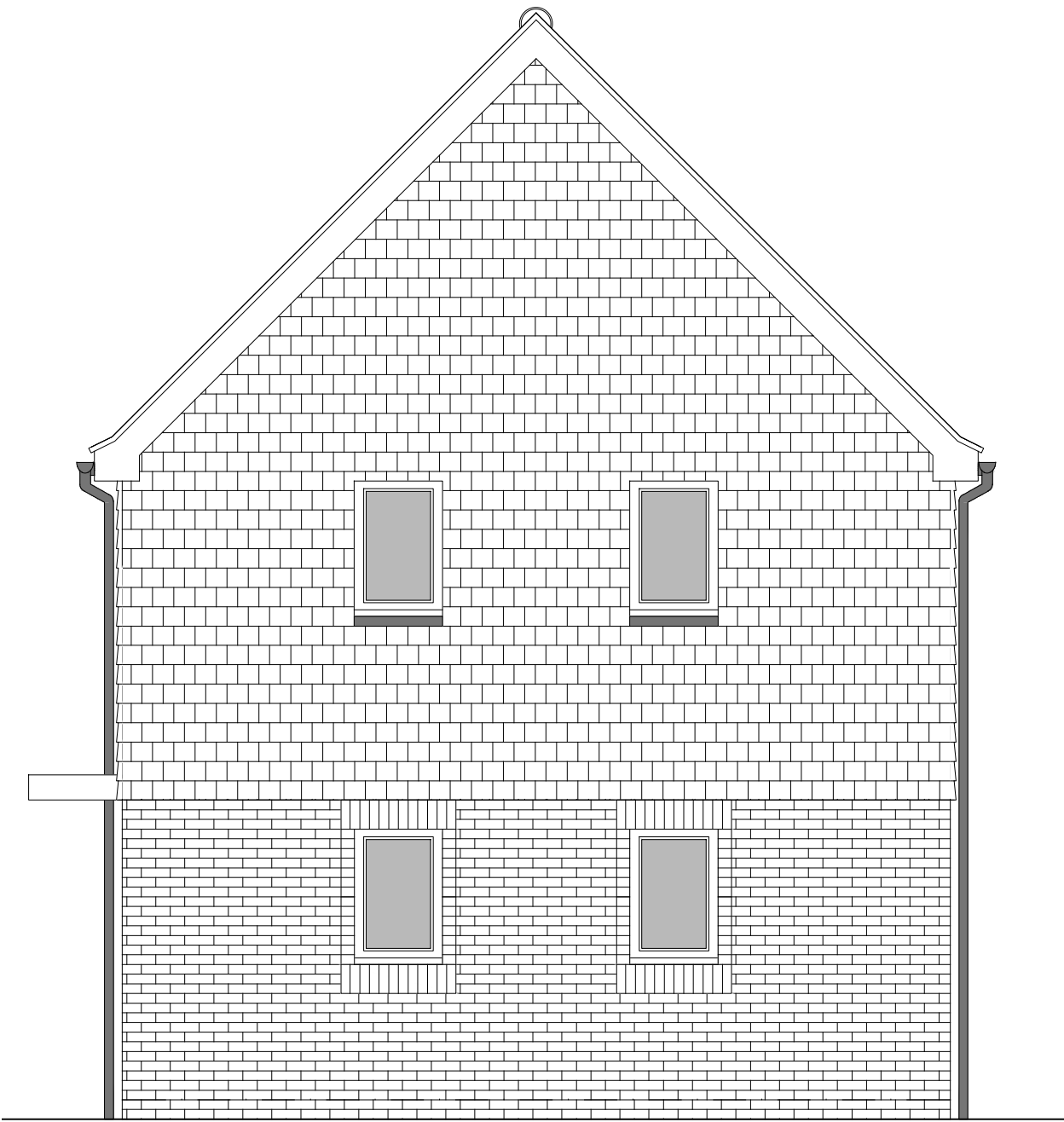


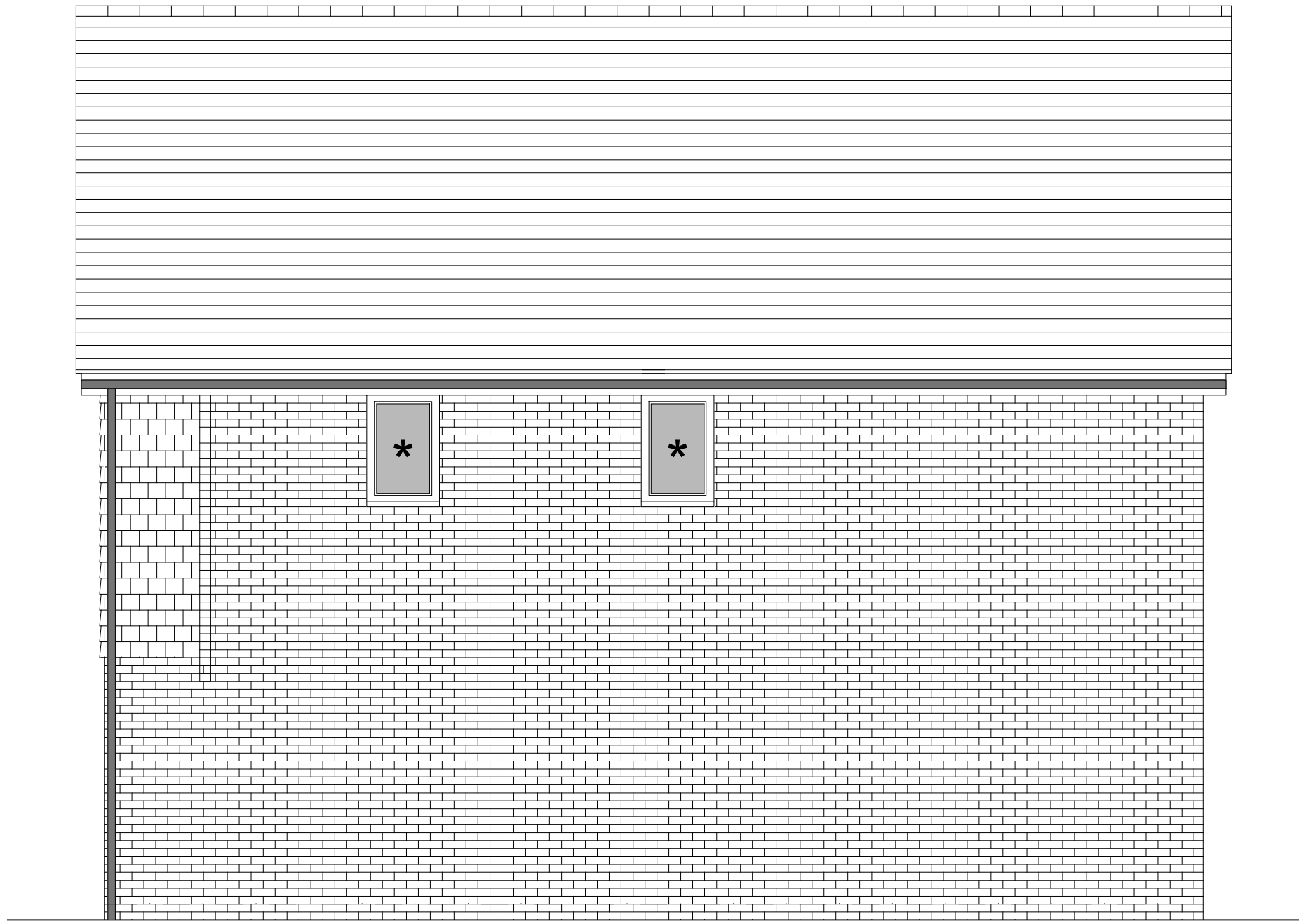
PHASE 4 THE LANDINGS, FORD, WEST SUSSEX
PROPOSED HOUSETYPE ELEVATIONS - HT "354" VARIANT "V14"



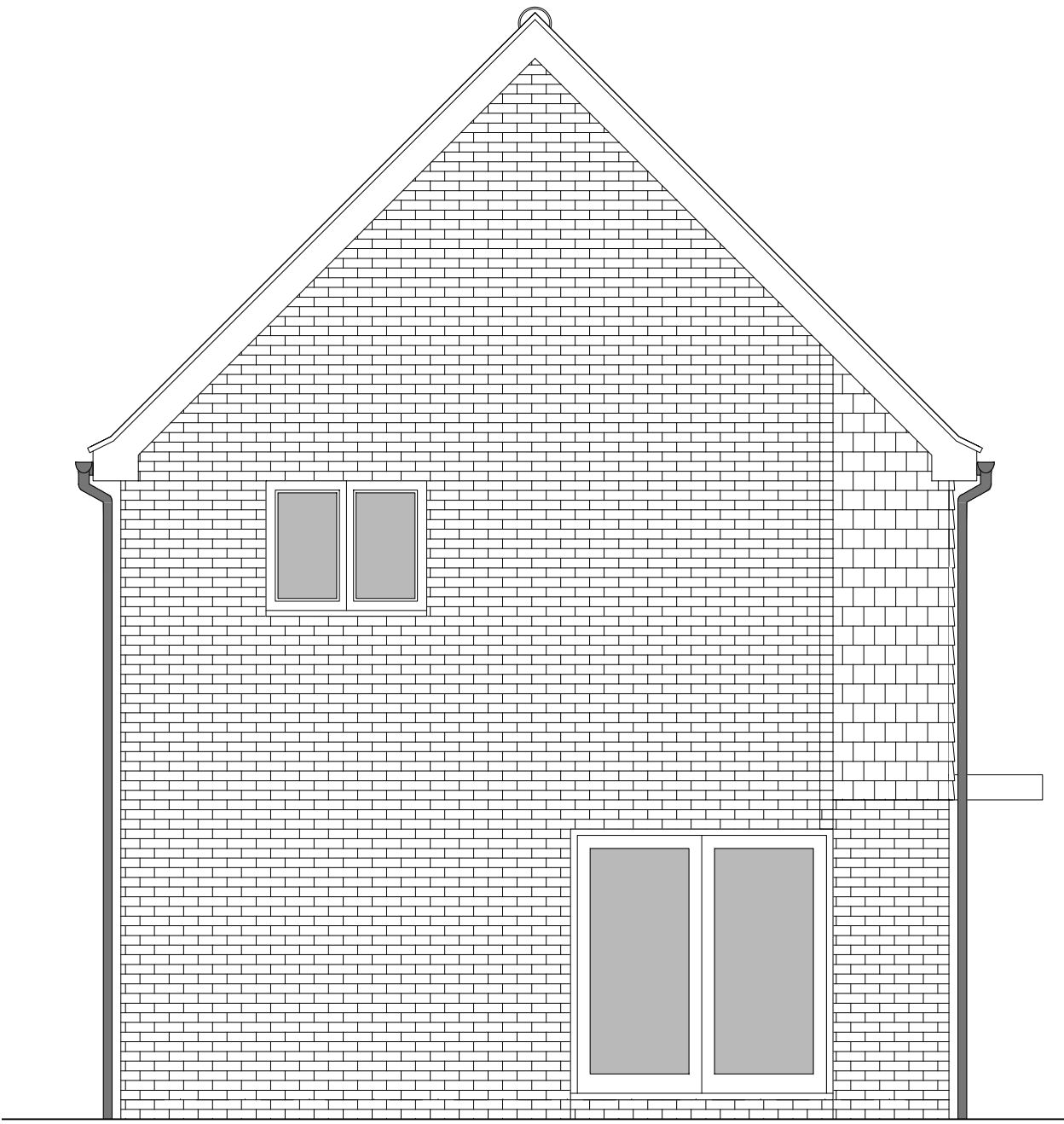
FRONT ELEVATION



SIDE ELEVATION 1



SIDE ELEVATION 2



REAR ELEVATION

HOUSETYPE VARIATIONS		
PLOT NUMBERS:	AS DRAWN	- 8
	HANDED	- 9, 25, 61
MATERIALS:	WALLS	- BRICK
	WALLS (TREATMENT)	- TILE HANGING
	FENESTRATION	- UPVC
	OBSURE WINDOWS	- BATHROOMS & ENSUITES
	EXTERNAL DOORS	- UPVC
	OBSURE DOORS	-
	ROOF	- TILE
WINDOW OMISSION*:	GUTTERING & DOWNPIPES	- UPVC
	FASCIA & SOFFITS	- UPVC
WINDOW OMISSION*:	PLOT(S)	- 9, 25
AREA OF UNIT (GIA):	108.9sqm	1172sqft
B. REGS PART M:	M4(2)	
NDSS COMPLIANT:	YES	
CHARACTER AREA:	RYEBANK PARK	



A	21.08.24	Rwp positions adjusted	JC
Rev	Date	Amendment	Initials
Project:			
PHASE 4 THE LANDINGS			
FORD, WEST SUSSEX			
Client:			
VISTRY SOUTH EAST			
Drawing:			
PROPOSED HOUSETYPE ELEVATIONS			
HT - "354" VARIANT "V14"			
Drawing no:			Rev:
22.1706.4577			A
Scale@A1:	1:50	Date:	AUG 24
Drawn:	JC	Checked:	CH

finc	
61-63 New London Road Chelmsford Essex CM2 0ND	
T: +44 (0)1245 933988	
W: www.fincarchitects.com	
E: company@fincarchitects.com	

Disclaimers:
© FINC Architects Limited holds the copyright to all the information contained within this document and their written consent must be obtained before copying or using the data other than for the purpose it was originally supplied.
All dimensions and measurements to be checked on site.
Do not scale from this drawing. This drawing is to be printed in colour.

PLANNING ISSUE