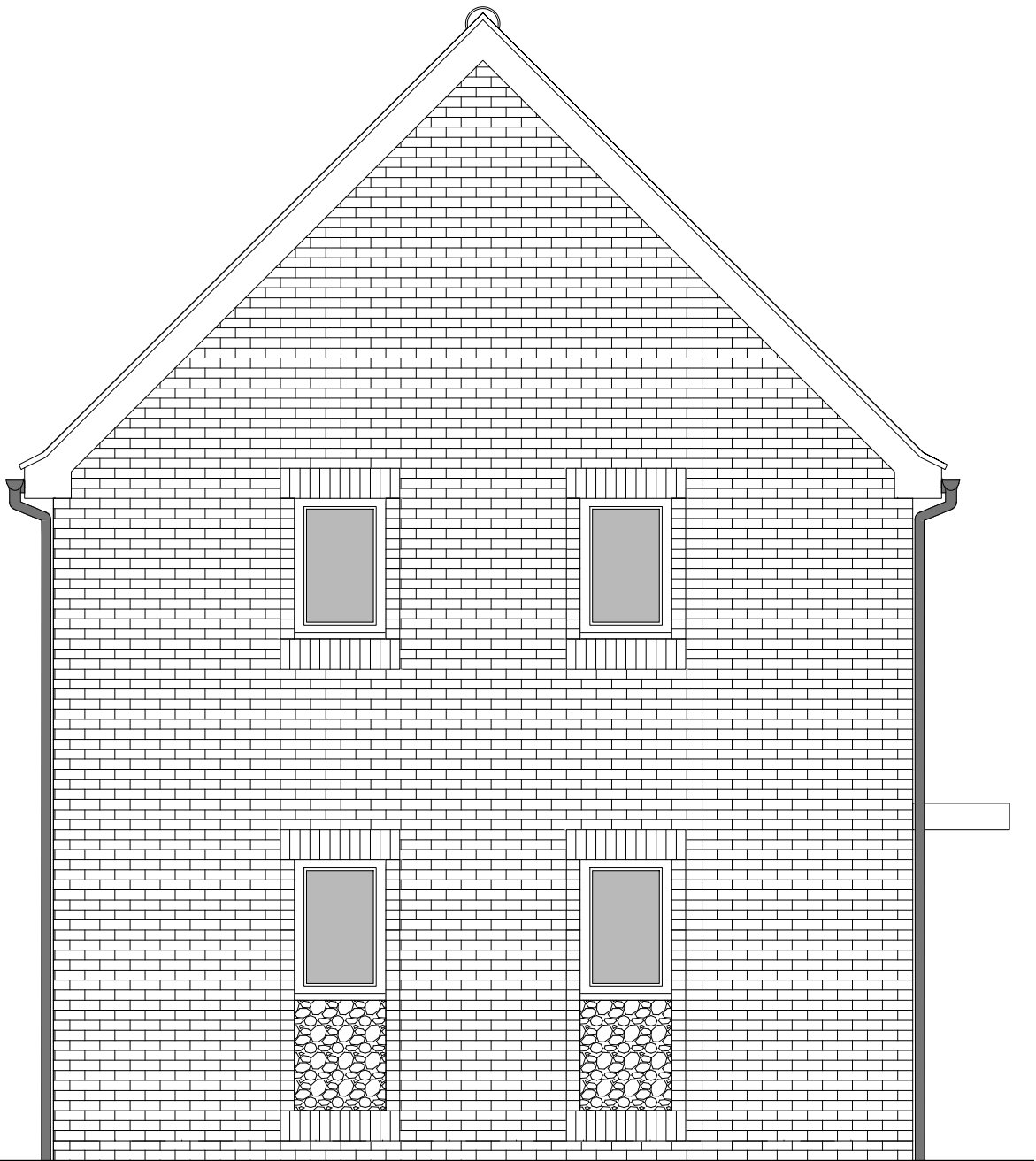


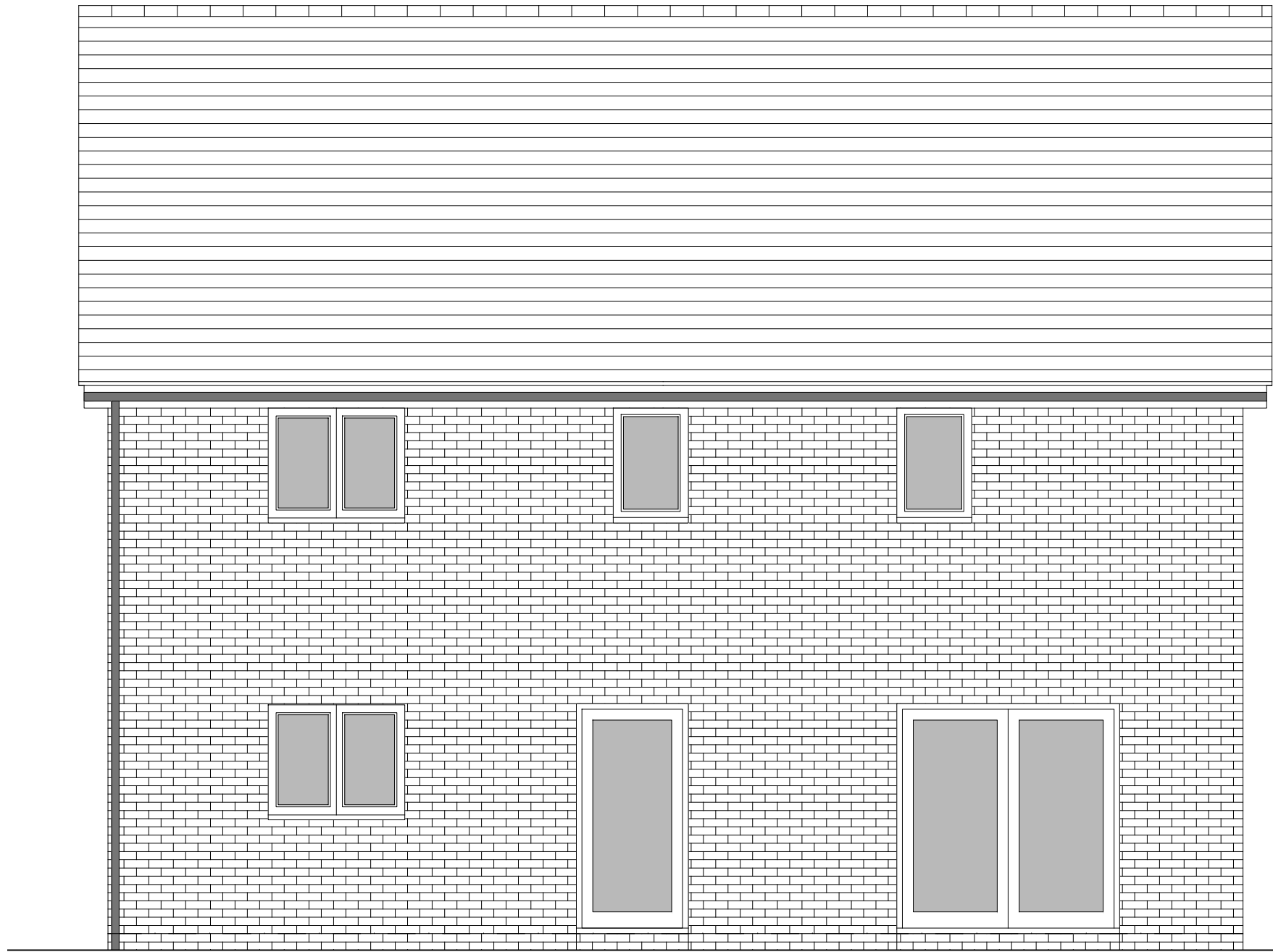
PHASE 4 THE LANDINGS, FORD, WEST SUSSEX  
PROPOSED HOUSETYPE ELEVATIONS - HT "355" VARIANT "V10"



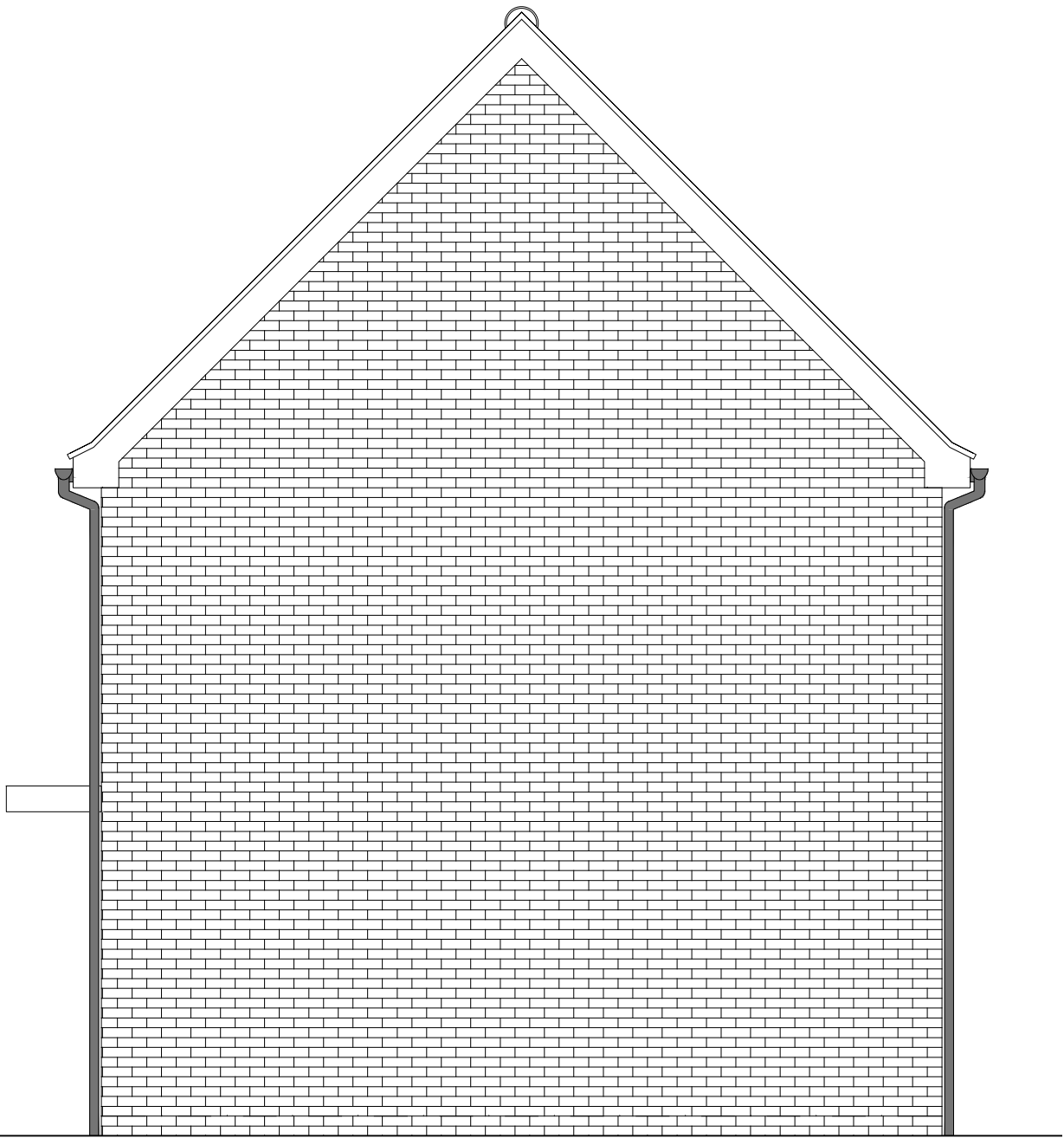
## FRONT ELEVATION



## SIDE ELEVATION 1



## REAR ELEVATION



## SIDE ELEVATION 2

HOUSETYPE VARIATIONS		
PLOT NUMBERS:	AS DRAWN	- 153
	HANDED	-
MATERIALS:	WALLS	- BRICK
	WALLS (TREATMENT)	- FLINT
	FENESTRATION	- UPVC
	OBSCURE WINDOWS	- BATHROOMS & ENSUITES
	EXTERNAL DOORS	- UPVC
	OBSCURE DOORS	- UTILITY ROOM
	ROOF	- TILE
	GUTTERING & DOWNPIPES	- UPVC
	FASCIA & SOFFITS	- UPVC
WINDOW OMISSION*:	PLOT(S)	- N/A
AREA OF UNIT (GIA):	108.9sqm	1172sqft
B. REGS PART M:	M4(2)	
NDSS COMPLIANT:	YES	
CHARACTER AREA:	RUNWAY	

Rev	Date	Amendment	Initials
<p>Project:</p> <p><b>PHASE 4 THE LANDINGS</b></p> <p><b>FORD, WEST SUSSEX</b></p> <p>Client:</p> <p><b>VISTRY SOUTH EAST</b></p> <p>Drawing:</p> <p><b>PROPOSED HOUSETYPE ELEVATIONS</b></p> <p><b>HT - "355" VARIANT "V10"</b></p>			
Drawing no:			Rev:
22.1706.4619			-
Scale	1:50	Date:	AUG 24
Drawn:	CLP	Checked:	CH

## PLANNING ISSUE



**finc** **FINC Architects Ltd**  
61-63 New London Road | Chelmsford | Essex | CM2 0ND  
T: +44 (0)1245 933988  
W: [www.fincarchitects.com](http://www.fincarchitects.com)  
E: [company@fincarchitects.com](mailto:company@fincarchitects.com)

**Disclaimer:** © FINC Architects Limited holds the copyright to all the information contained within this document and their written consent must be obtained before copying or using the data other than for the purpose it was originally supplied.

All dimensions and measurements to be checked on site.  
Do not scale from this drawing. This drawing is to be printed in colour.