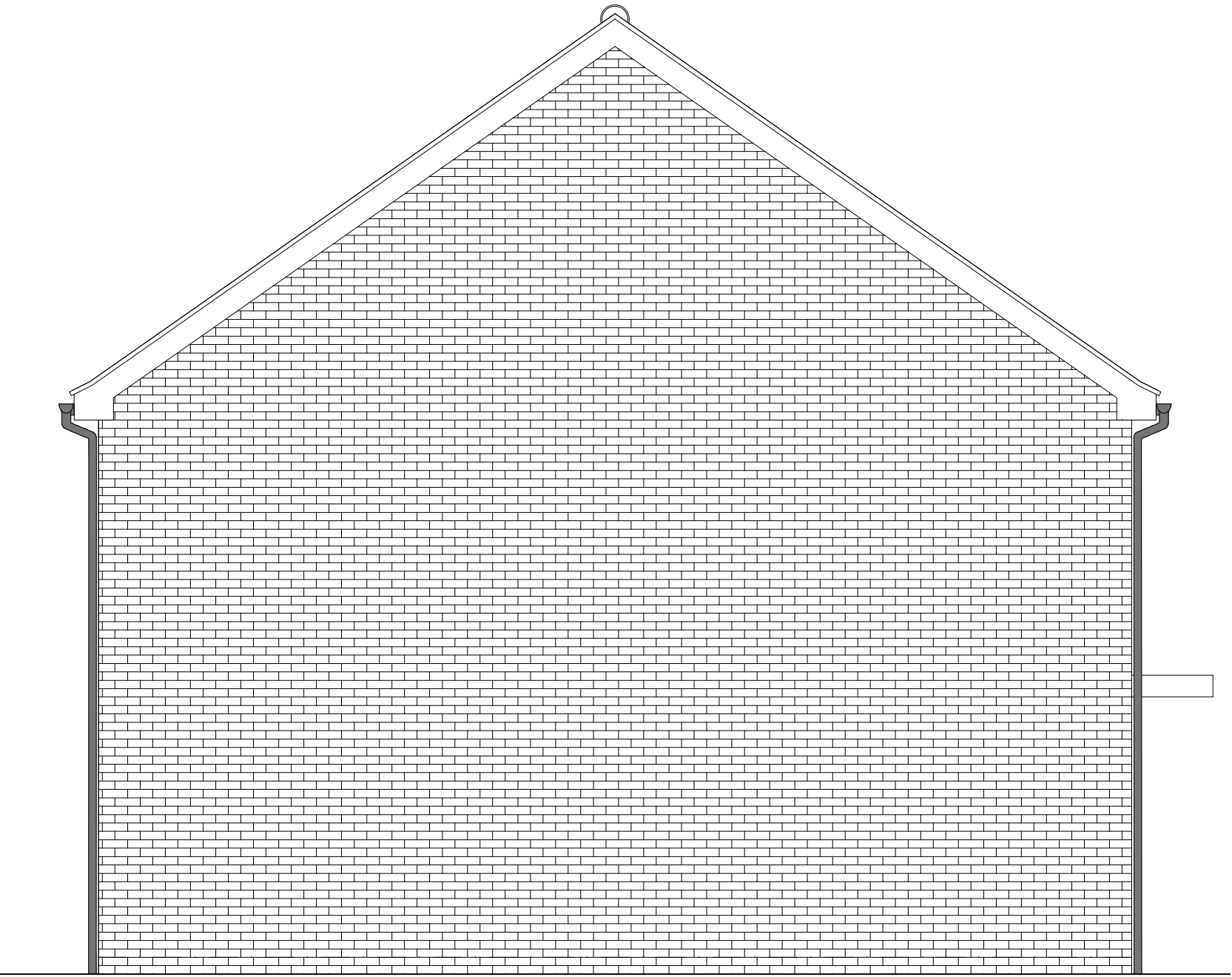
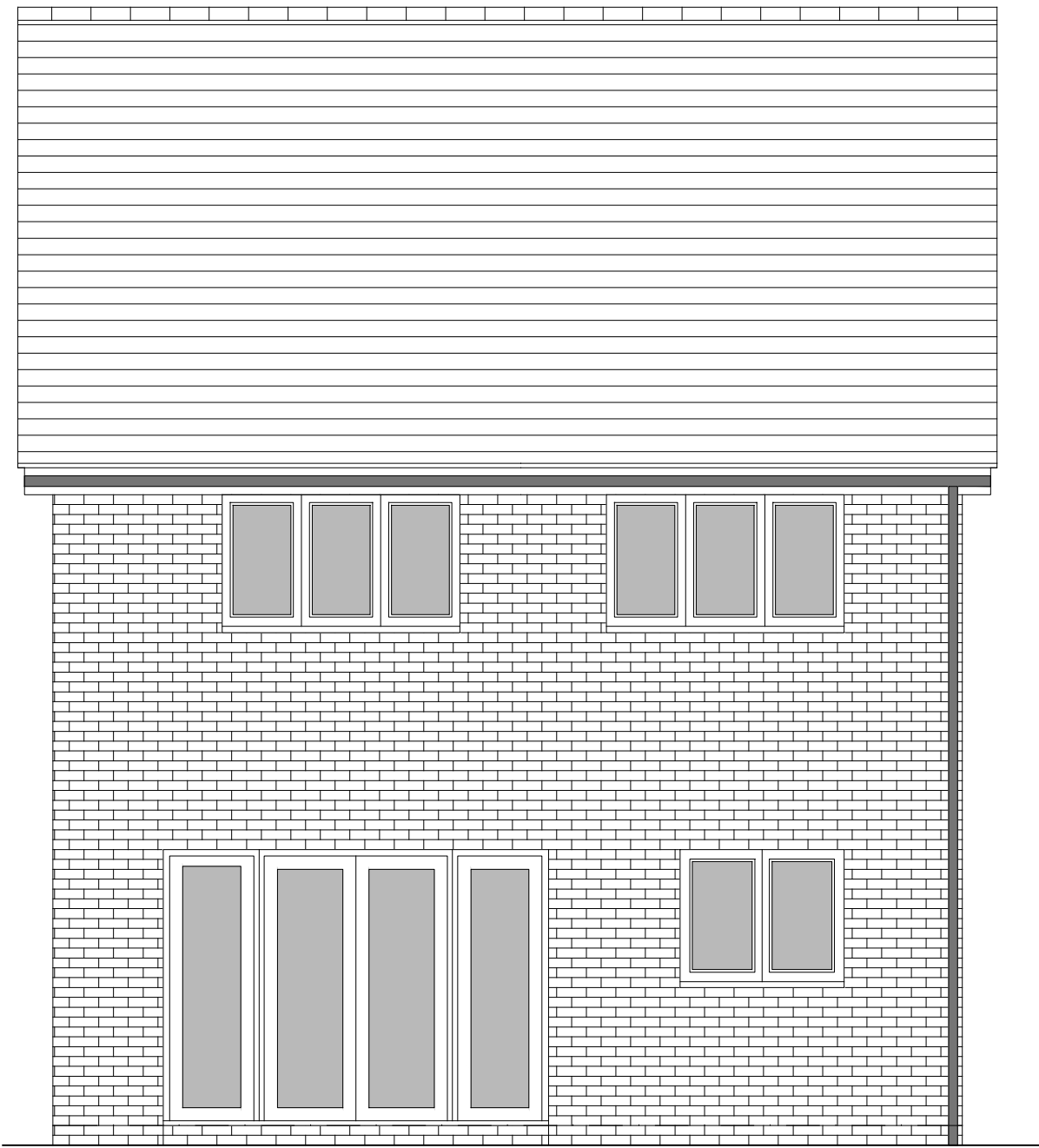


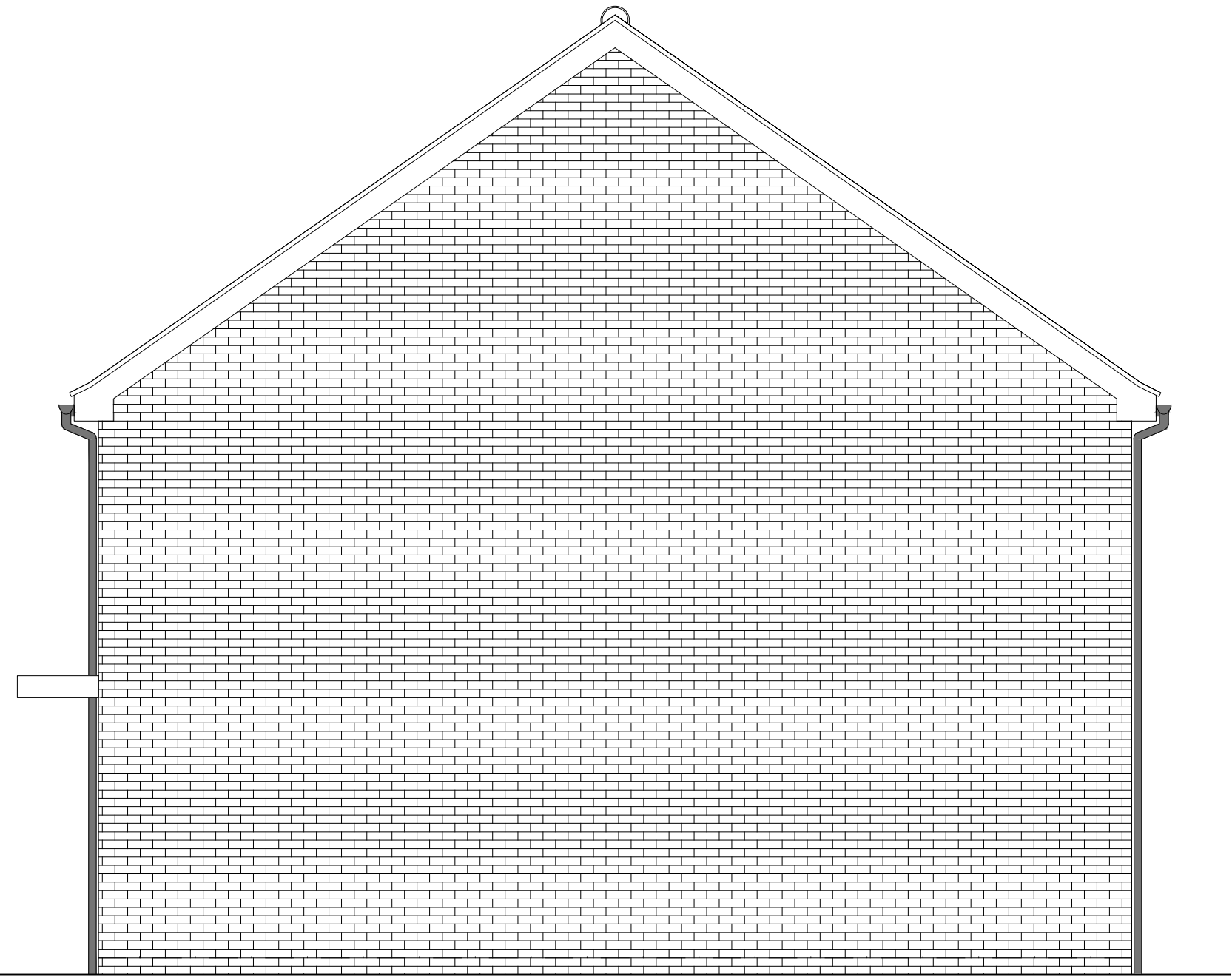
FRONT ELEVATION



SIDE ELEVATION 1



REAR ELEVATION



SIDE ELEVATION 2

HOUSETYPE VARIATIONS		
PLOT NUMBERS:	AS DRAWN	- 50
	HANDED	- 7, 82, 126
MATERIALS:	WALLS	- BRICK
	WALLS (TREATMENT)	-
	FENESTRATION	- UPVC
	OBSCURE WINDOWS	- BATHROOMS
	EXTERNAL DOORS	- UPVC
	OBSCURE DOORS	-
	ROOF	- TILE
	GUTTERING & DOWNPIPES	- UPVC
	FASCIA & SOFFITS	- UPVC
WINDOW OMISSION*:	PLOT(S)	- N/A
AREA OF UNIT (GIA):	104.7sqm	1126sqft
B. REGS PART M:	M4(2)	
NDSS COMPLIANT:	YES	
CHARACTER AREA:	RYEBANK PARK	

A	21.08.24	Adapted To Suit Material Plan Changes & Canopy Height adjusted	CLP
Rev	Date	Amendment	Initials
Project:			
PHASE 4 THE LANDINGS			
FORD, WEST SUSSEX			
Client:			
VISTRY SOUTH EAST			
Drawing:			
PROPOSED HOUSETYPE ELEVATIONS			
HT - "361" VARIANT "V5"			
Drawing no:		Rev:	
22.1706.4707		A	
Scale@A1:	1:50	Date:	AUG 24
Drawn:	JC	Checked:	CH

<b>finc</b>	
61-63 New London Road   Chelmsford   Essex   CM2 0ND	
T: +44 (0)1245 933888	
W: <a href="http://www.fincarchitects.com">www.fincarchitects.com</a>	
E: <a href="mailto:company@fincarchitects.com">company@fincarchitects.com</a>	

**Disclaimers:**  
© FINC Architects Limited holds the copyright to all the information contained within this document and their written consent must be obtained before copying or using the data other than for the purpose it was originally supplied.  
All dimensions and measurements to be checked on site.  
Do not scale from this drawing. This drawing is to be printed in colour.