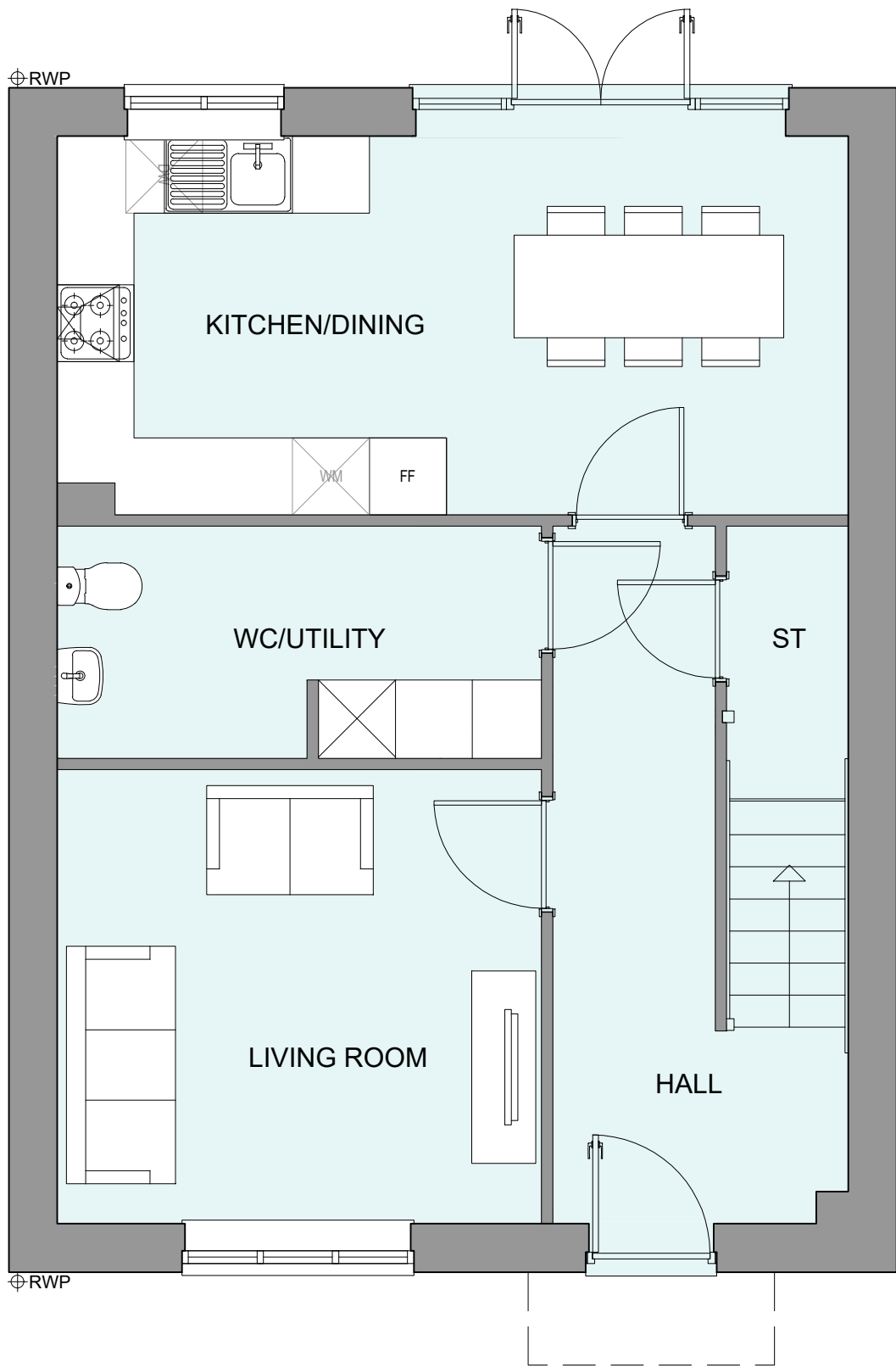
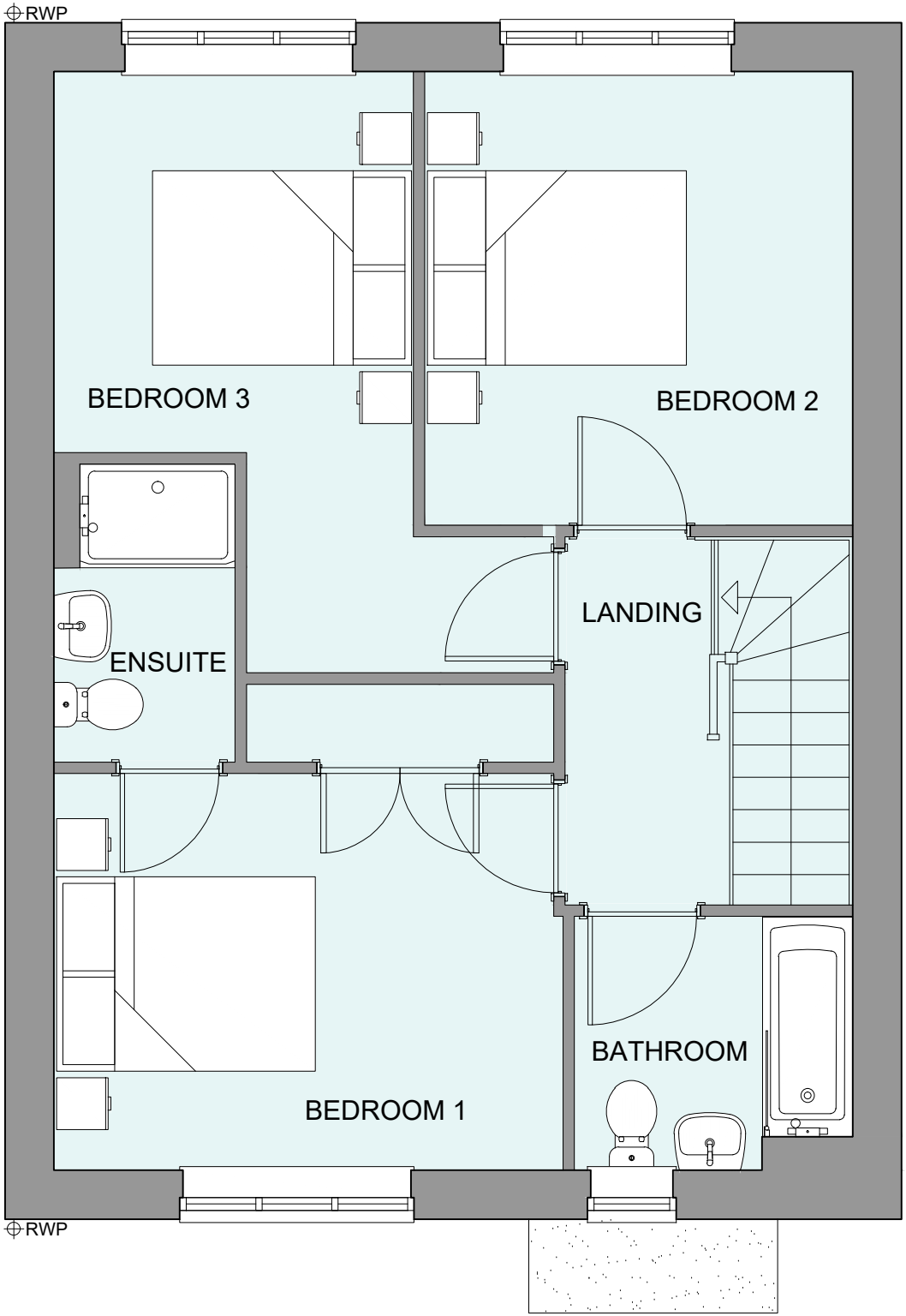


PHASE 4 THE LANDINGS, FORD, WEST SUSSEX  
PROPOSED HOUSETYPE PLANS - HT "361" VARIANT "V5"

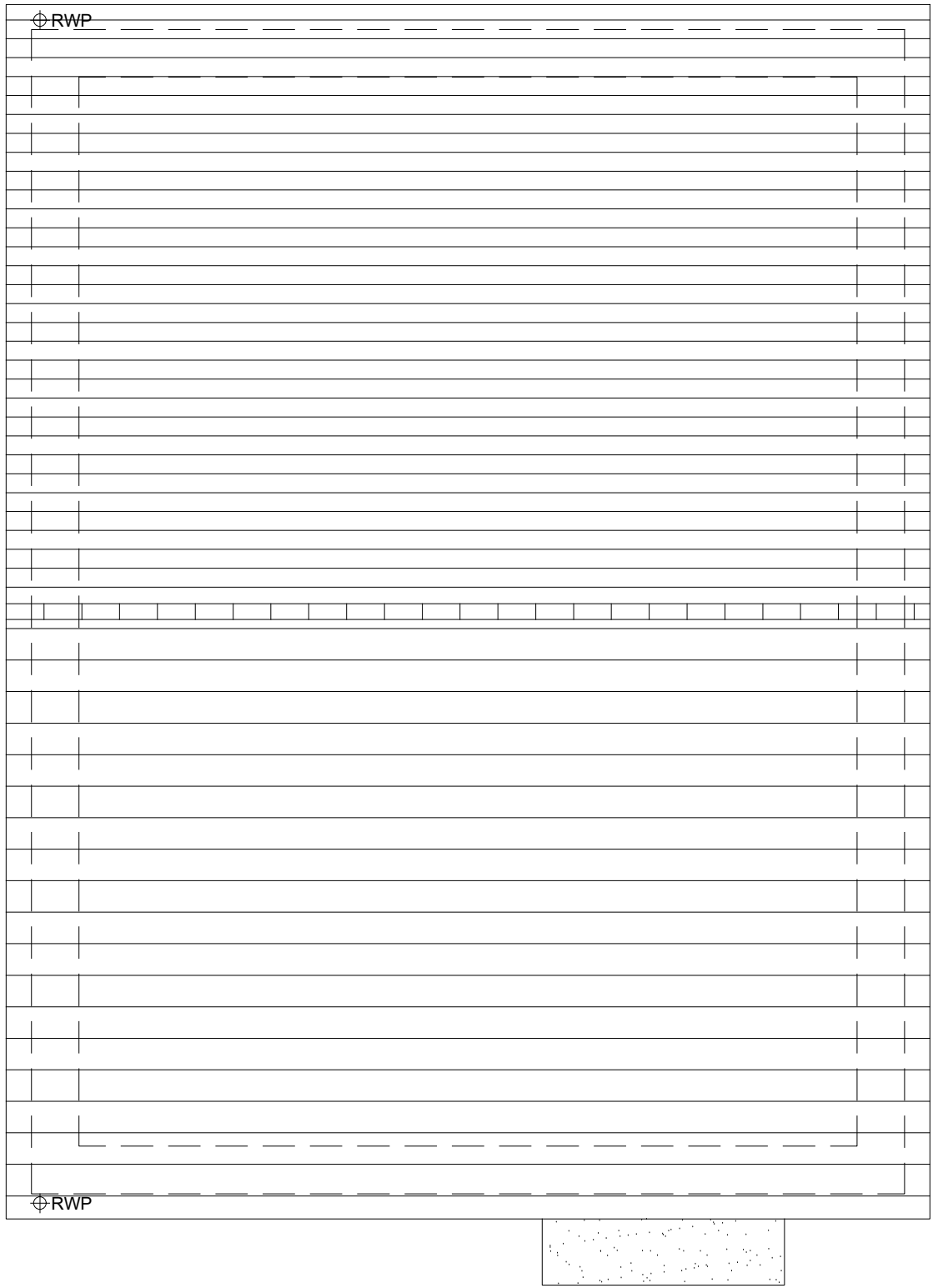
HOUSETYPE VARIATIONS		
PLOT NUMBERS:	AS DRAWN	- 50
	HANDED	- 7, 82, 126
MATERIALS:	WALLS	- BRICK
	WALLS (TREATMENT)	-
	FENESTRATION	- UPVC
	OBSCURER WINDOWS	- BATHROOMS
	EXTERNAL DOORS	- UPVC
	OBSCURER DOORS	-
	ROOF	- TILE
WINDOW OMISSION*:	PLOT(S)	- N/A
	AREA OF UNIT (GIA):	104.7sqm 1126sqft
B. REGS PART M:	M4(2)	
NDSS COMPLIANT:	YES	
CHARACTER AREA:	RYEBANK PARK	



GROUND FLOOR PLAN



FIRST FLOOR PLAN



ROOF PLAN



A	15.08.24	Adapted To Suit Material Plan Changes	CLP
Rev	Date	Amendment	Initials
Project: PHASE 4 THE LANDINGS FORD, WEST SUSSEX			
Client: VISTRY SOUTH EAST			
Drawing: PROPOSED HOUSETYPE PLANS HT - "361" VARIANT "V5"			
Drawing no:		Rev:	
22.1706.4706		A	
Scale@A1:	1:50	Date:	AUG 24
Drawn:	JC	Checked:	CH

<b>finc</b>	
61-63 New London Road   Chelmsford   Essex   CM2 0ND	
T: +44 (0)1245 933888	
W: <a href="http://www.fincarchitects.com">www.fincarchitects.com</a>	
E: <a href="mailto:company@fincarchitects.com">company@fincarchitects.com</a>	

**Disclaimer:** © Finc Architects Limited holds the copyright to all the information contained within this document and their written consent must be obtained before copying or using the data other than for the purpose it was originally supplied.  
All dimensions and measurements to be checked on site.  
Do not scale from this drawing. This drawing is to be printed in colour.

PLANNING ISSUE