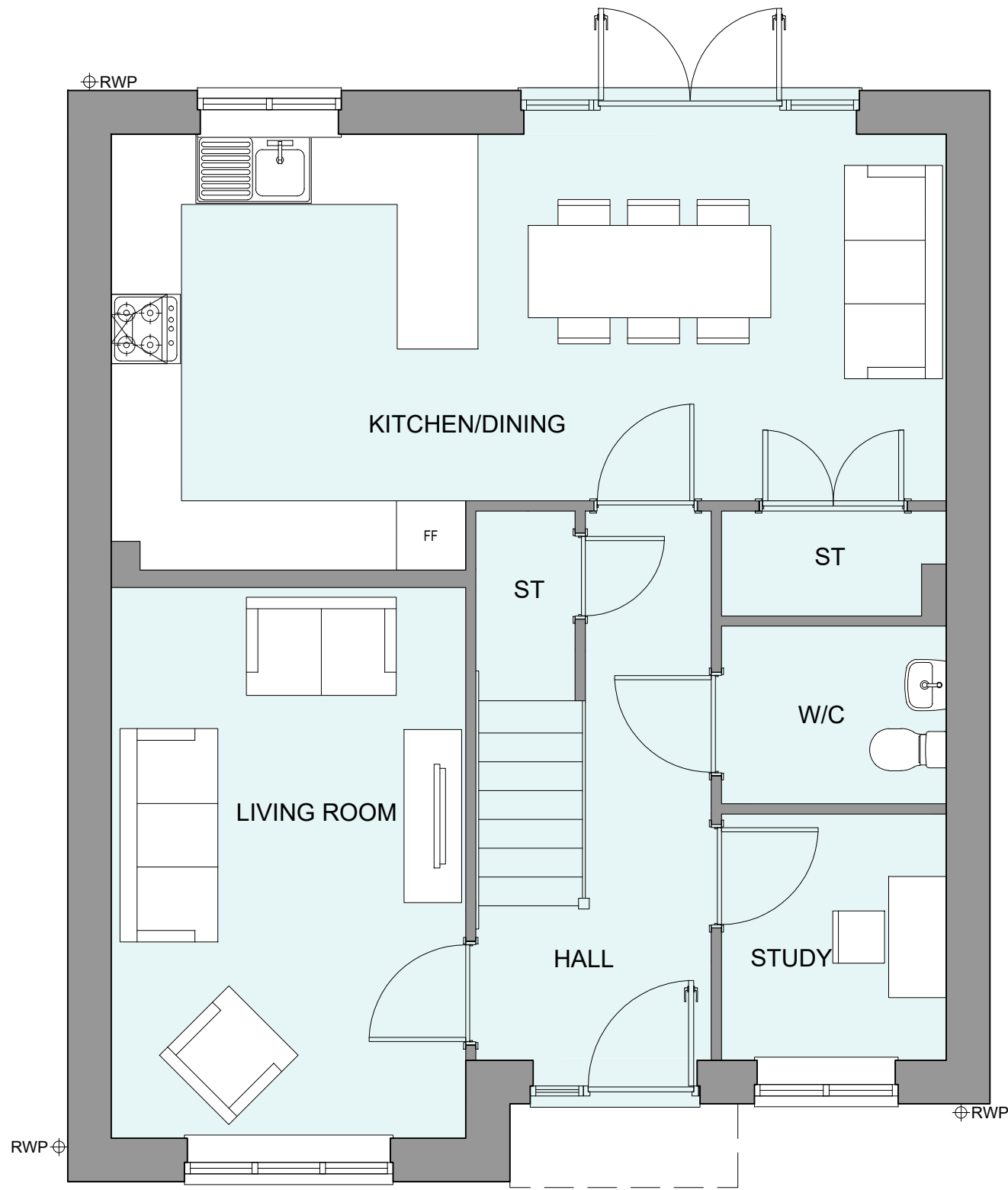
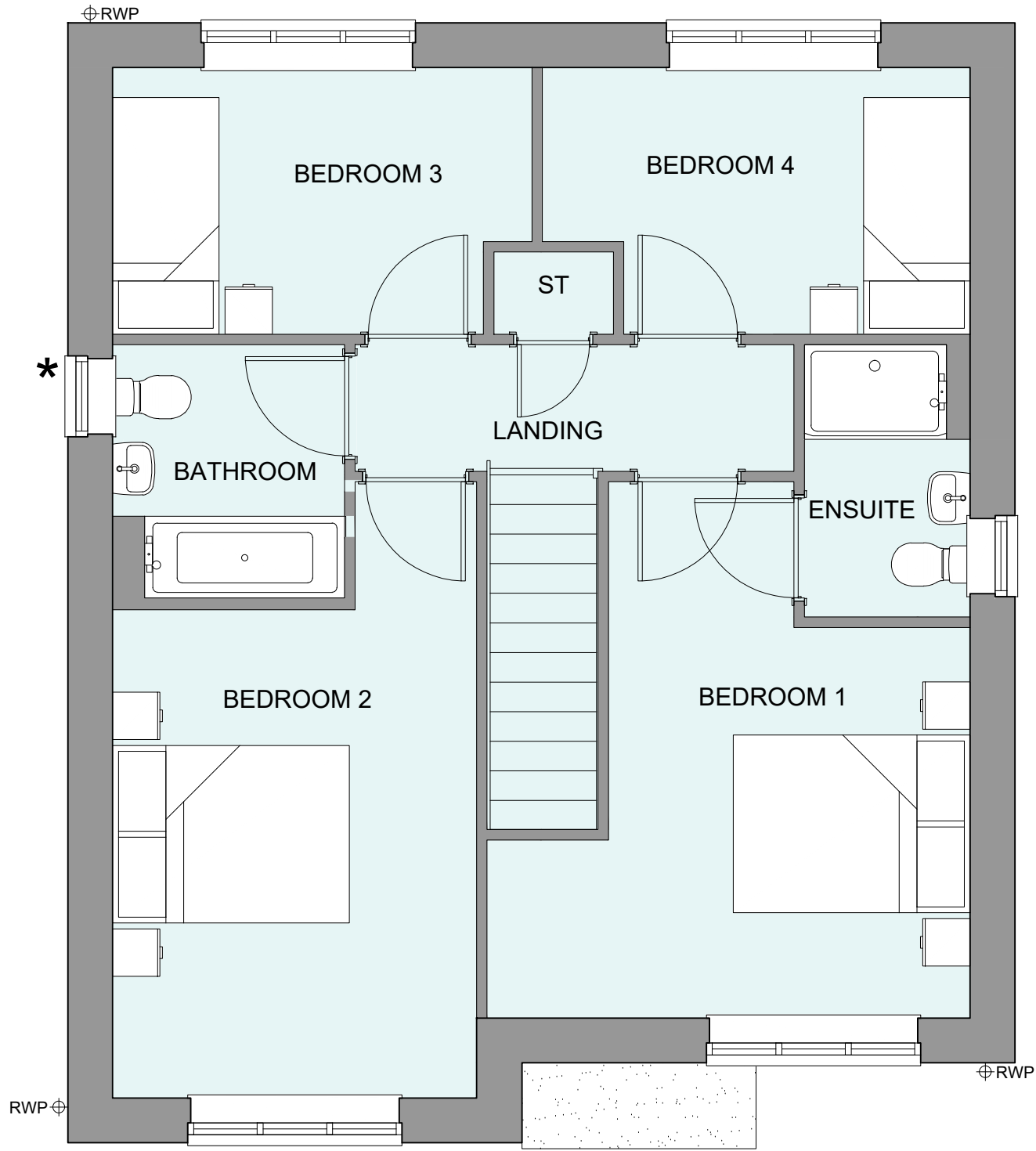


PHASE 4 THE LANDINGS, FORD, WEST SUSSEX
PROPOSED HOUSETYPE PLANS - HT "461" VARIANT "V2"

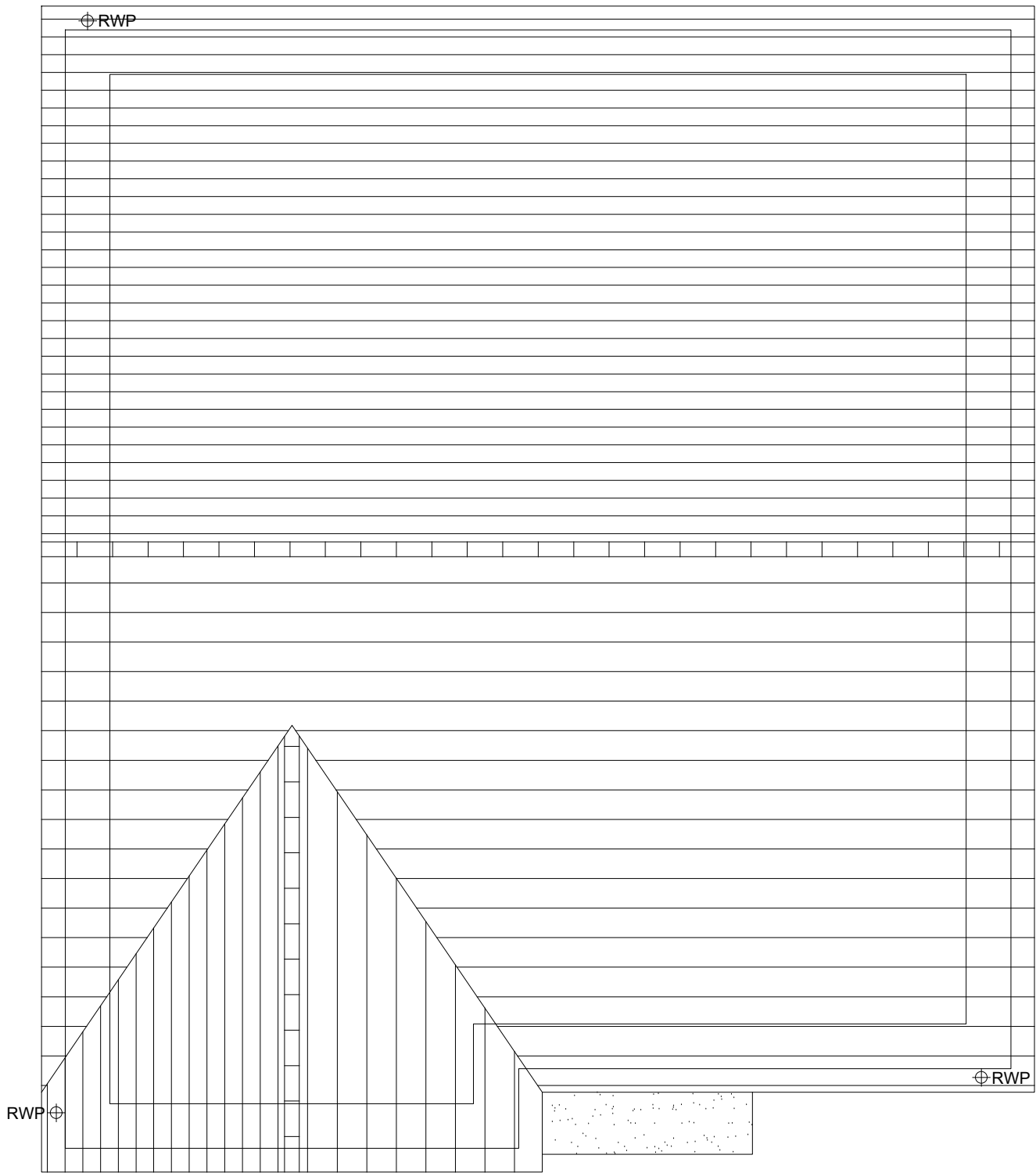
HOUSETYPE VARIATIONS		
PLOT NUMBERS:	AS DRAWN	- 300, 331
	HANDED	- 301, 307, 330
MATERIALS:	WALLS	- BRICK
	WALLS (TREATMENT)	- RENDER
	FENESTRATION	- UPVC
	OBSCURER WINDOWS	- BATHROOMS & ENSUITES
	EXTERNAL DOORS	- UPVC
	OBSCURER DOORS	-
	ROOF	- TILE
WINDOW OMISSION*:	GUTTERING & DOWNPIPES	- UPVC
	FASCIA & SOFFITS	- UPVC
WINDOW OMISSION*:	PLOT(S)	- 300, 301, 307, 330, 331
AREA OF UNIT (GIA):	120.5sqm	1297sqft
B. REGS PART M:	M4(2)	
NDSS COMPLIANT:	YES	
CHARACTER AREA:	RUNWAY PARK	



GROUND FLOOR PLAN



FIRST FLOOR PLAN



ROOF PLAN



Rev	Date	Amendment	Initials
Project: PHASE 4 THE LANDINGS FORD, WEST SUSSEX			
Client: VISTRY SOUTH EAST			
Drawing: PROPOSED HOUSETYPE PLANS HT - "461" VARIANT "V2"			
Drawing no:		Rev:	
22.1706.4852		-	
Scale@A1:	1:50	Date:	AUG 24
Drawn:	JC/CH	Checked:	YC

finc	FINC Architects Ltd		
	61-63 New London Road Chelmsford Essex CM2 0ND		
	T:	+44 (0)1245 933988	
	W:	www.fincarchitects.com	
		E:	company@fincarchitects.com

Disclaimers: © FINC Architects Limited holds the copyright to all the information contained within this document and their written consent must be obtained before copying or using the data other than for the purpose it was originally supplied.
All dimensions and measurements to be checked on site.
Do not scale from this drawing. This drawing is to be printed in colour.

PLANNING ISSUE