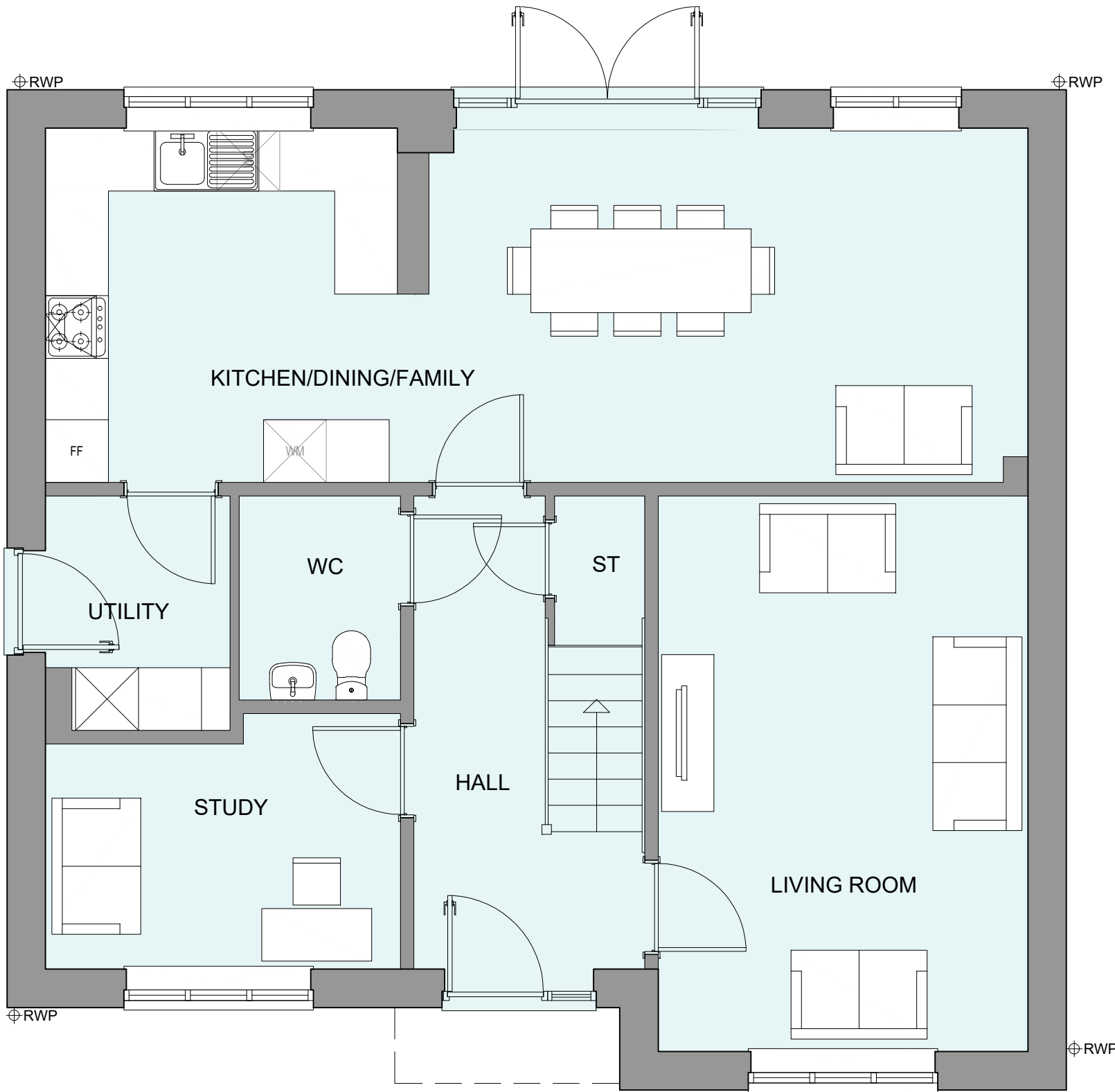
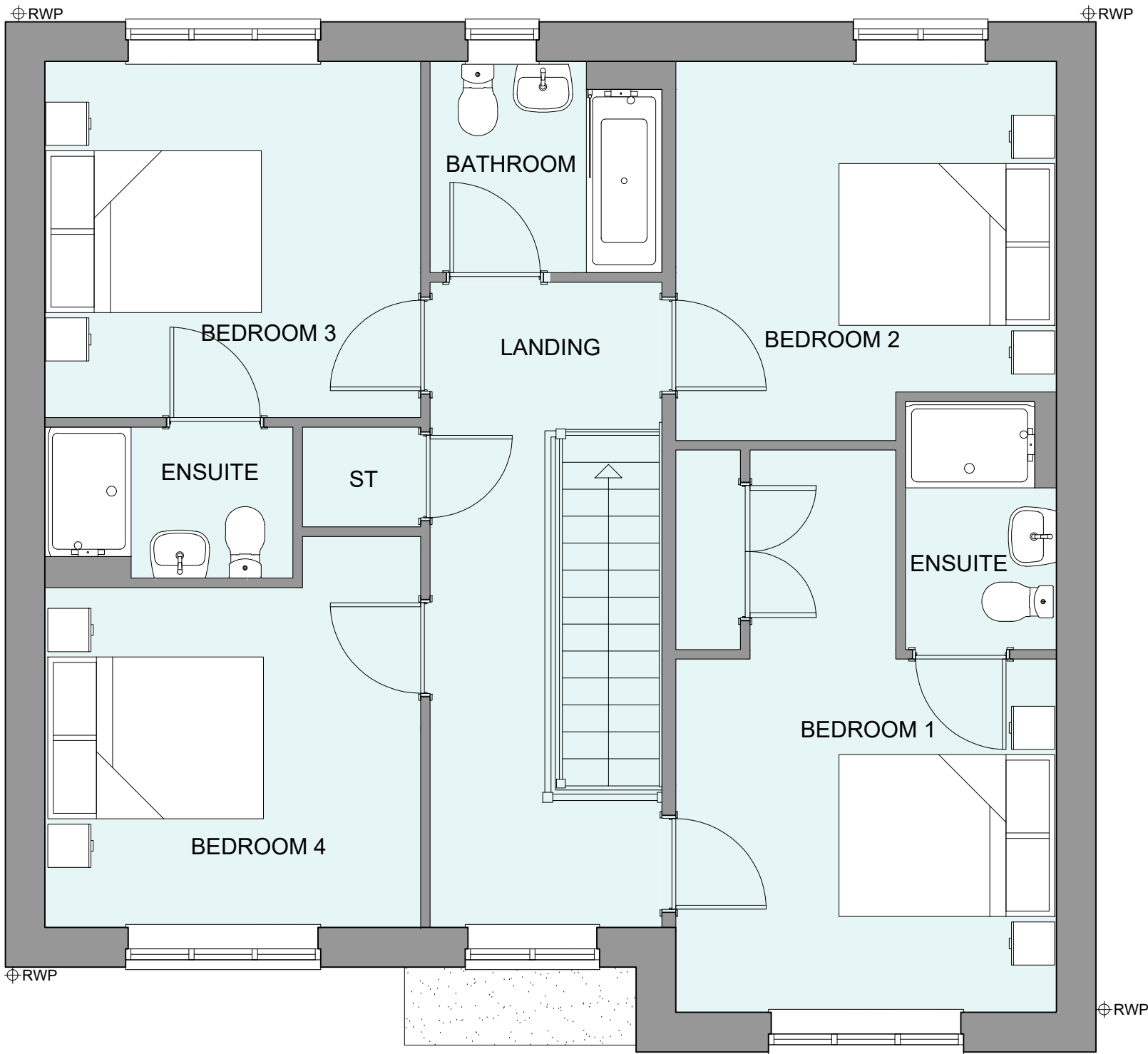


PHASE 4 THE LANDINGS, FORD, WEST SUSSEX  
PROPOSED HOUSETYPE PLANS - HT "481" VARIANT "V1"

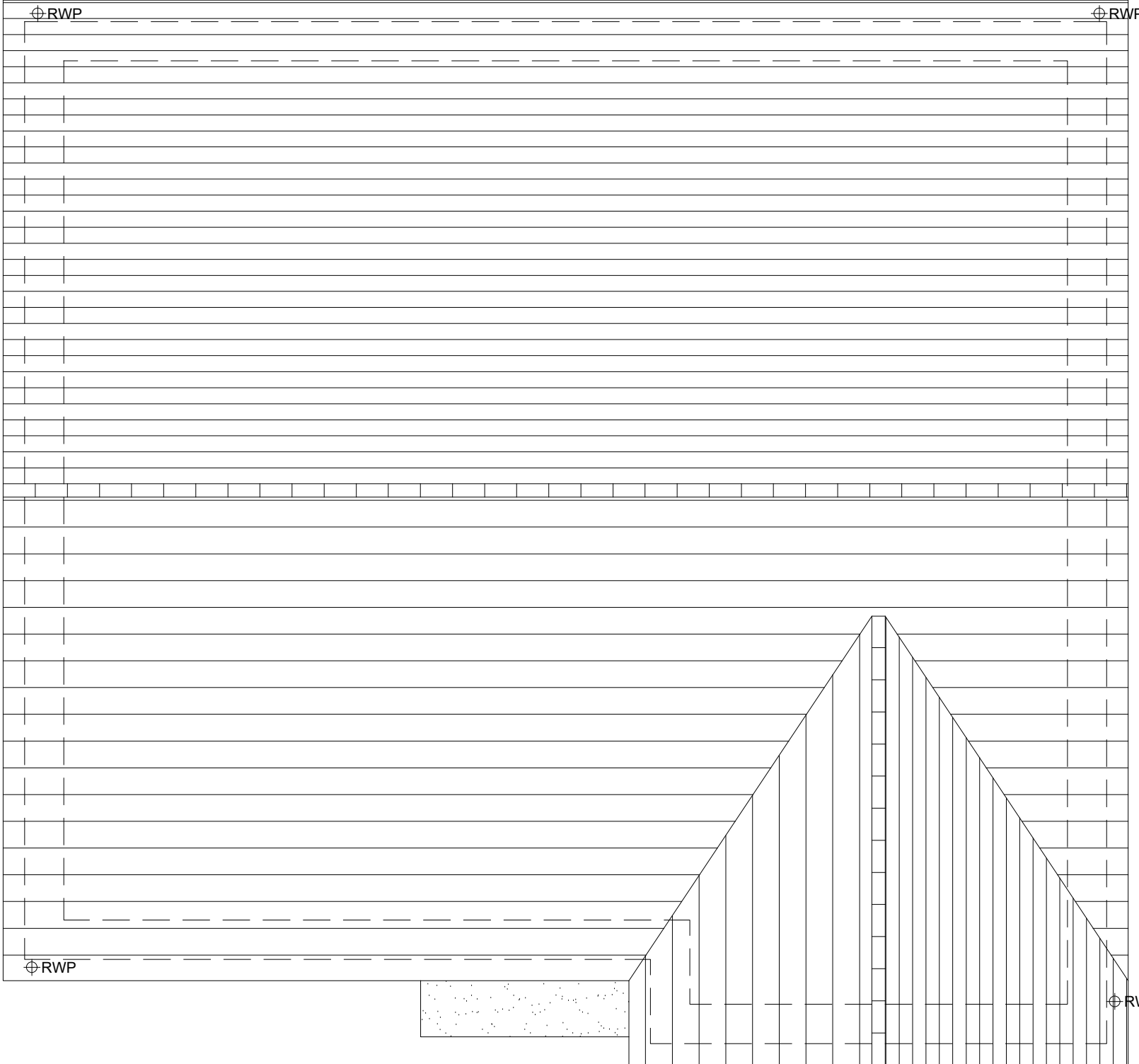
HOUSETYPE VARIATIONS		
PLOT NUMBERS:	AS DRAWN	- 133
	HANDED	-
MATERIALS:	WALLS	- BRICK
	WALLS (TREATMENT)	-
	FENESTRATION	- UPVC
	OBSCUREROWINDOWS	- BATHROOMS & ENSUITES
	EXTERNAL DOORS	- UPVC
	OBSCUREROWDOORS	- UTILITY ROOM
	ROOF	- TILE
	GUTTERING & DOWNPIPES	- UPVC
	FASCIA & SOFFITS	- UPVC
WINDOW OMISSION*:	PLOT(S)	- N/A
AREA OF UNIT (GIA):	156.2sqm	1681sqft
B. REGS PART M:	M4(2)	
NDSS COMPLIANT:	YES	
CHARACTER AREA:	RUNWAY PARK	



GROUND FLOOR PLAN



FIRST FLOOR PLAN



ROOF PLAN



A	20-08-24	Revised Flashing & Removal Of Window	CLP
Rev	Date	Amendment	Initials
Project: PHASE 4 THE LANDINGS FORD, WEST SUSSEX			
Client: VISTRY SOUTH EAST			
Drawing: PROPOSED HOUSETYPE PLANS HT - "481" VARIANT "V1"			
Drawing no:		Rev:	
22.1706.5300		A	
Scale@A1:	1:50	Date:	AUG 24
Drawn:	JC/CH	Checked:	YC

**finc**

61-63 New London Road | Chelmsford | Essex | CM2 0ND  
T: +44 (0)1245 933988  
W: [www.fincarchitects.com](http://www.fincarchitects.com)  
E: [company@fincarchitects.com](mailto:company@fincarchitects.com)

© Finc Architects Limited holds the copyright to all the information contained within this document and their written consent must be obtained before copying or using the data other than for the purpose it was originally supplied.  
All dimensions and measurements to be checked on site.  
Do not scale from this drawing. This drawing is to be printed in colour.

PLANNING ISSUE