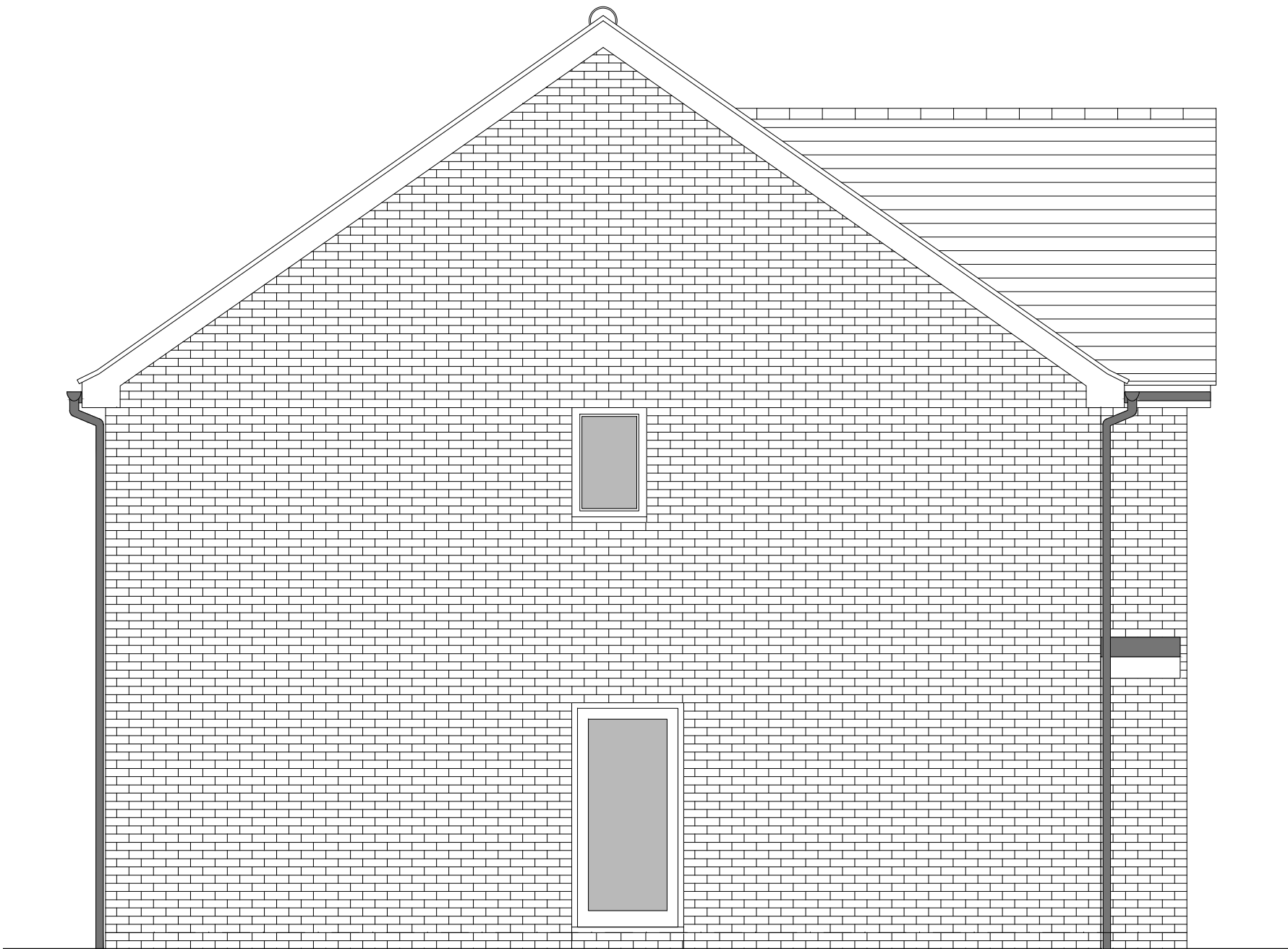


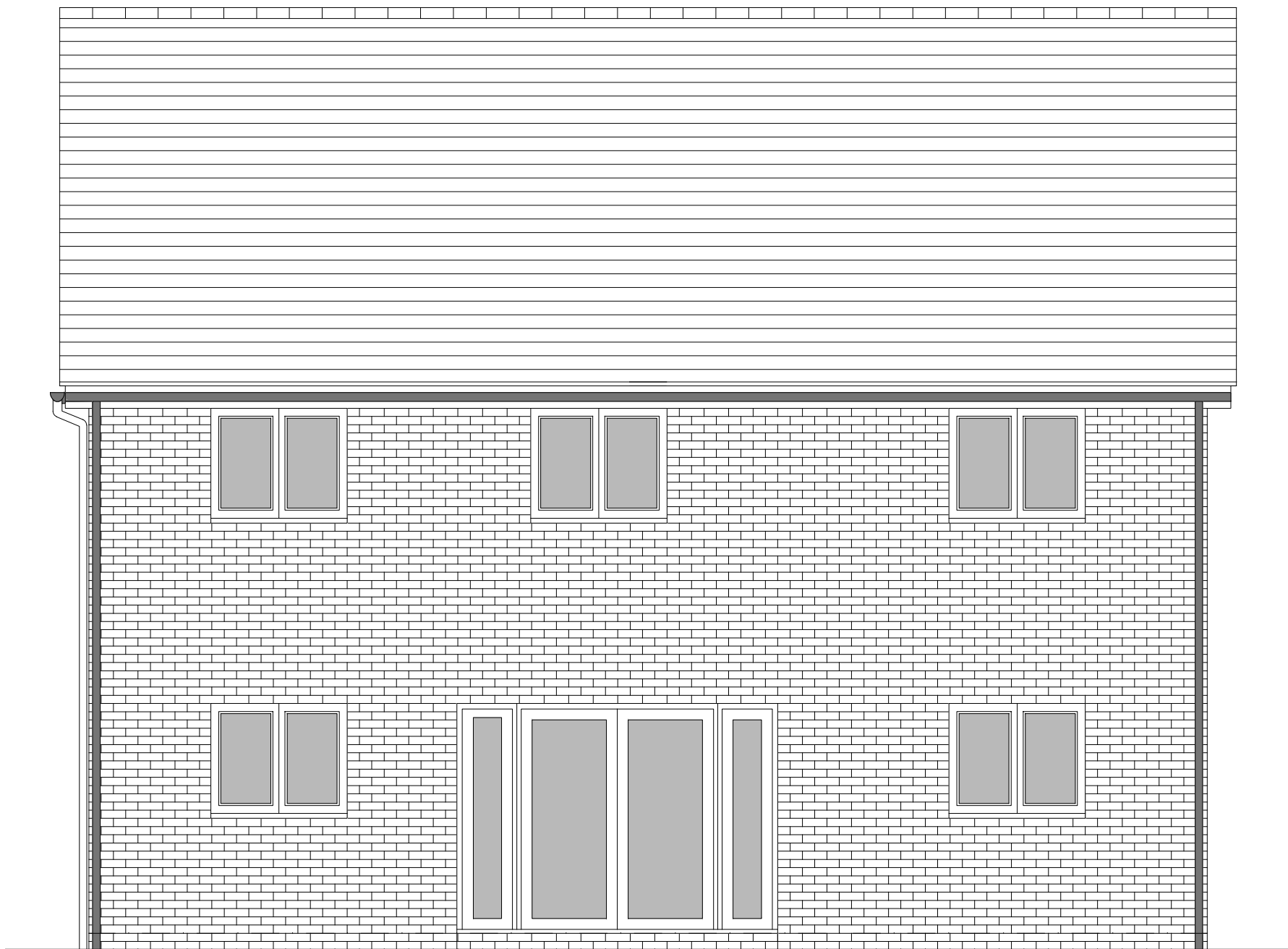
PHASE 4 THE LANDINGS, FORD, WEST SUSSEX
PROPOSED HOUSETYPE ELEVATIONS - HT "581" VARIANT "V4"



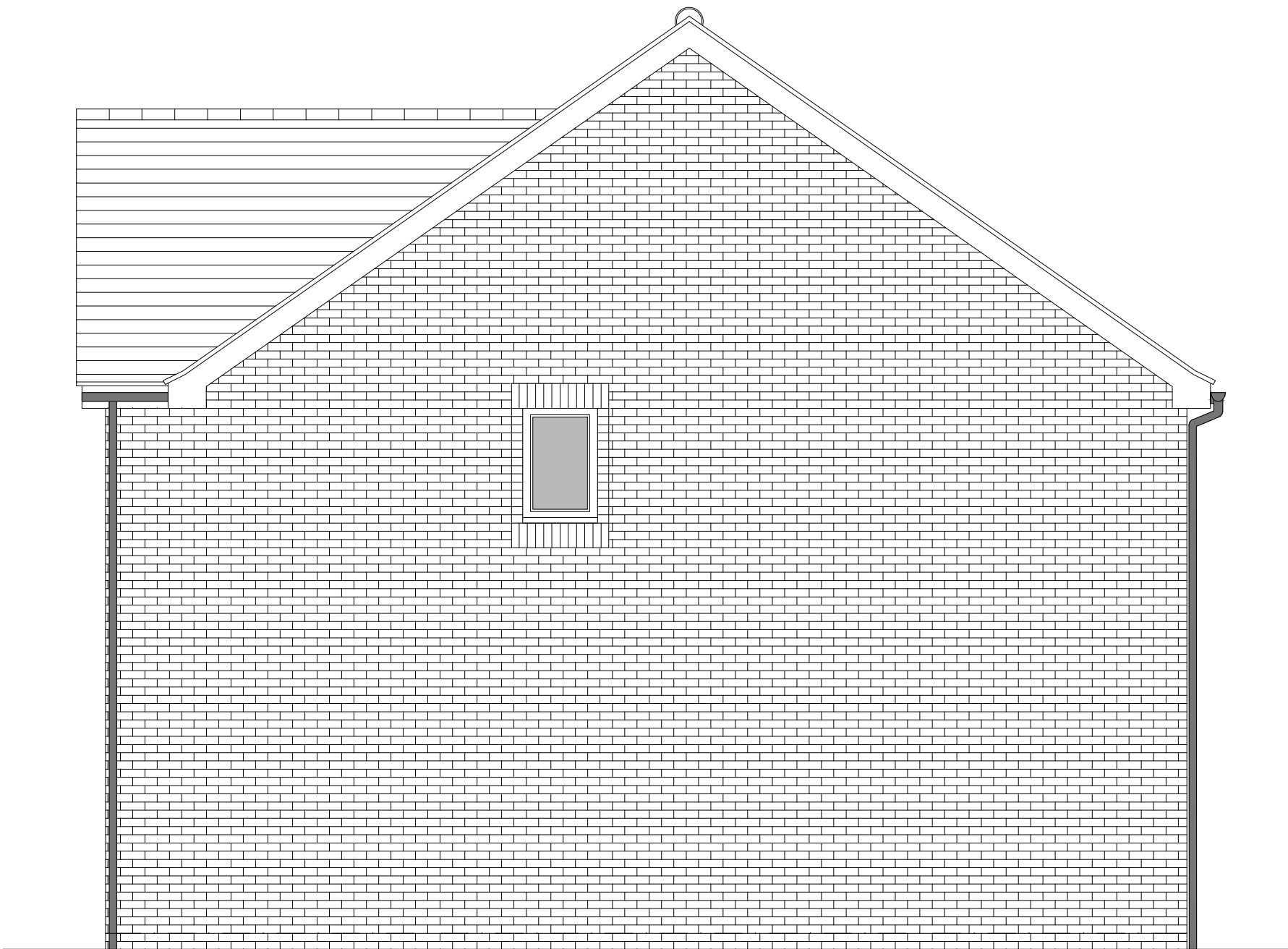
FRONT ELEVATION



SIDE ELEVATION 1



REAR ELEVATION



SIDE ELEVATION 2

HOUSETYPE VARIATIONS		
PLOT NUMBERS:	AS DRAWN	-
	HANDED	- 21, 49, 73
MATERIALS:	WALLS	- BRICK
	WALLS (TREATMENT)	- FLINT
	FENESTRATION	- UPVC
	OBSCURER WINDOWS	- BATHROOMS & ENSUITES
	EXTERNAL DOORS	- UPVC
	OBSCURER DOORS	- UTILITY ROOM
	ROOF	- TILE
GUTTERING & DOWNPIPES	- UPVC	
	FASCIA & SOFFITS	- UPVC
WINDOW OMISSION*:	PLOT(S)	- N/A
AREA OF UNIT (GIA):	164.8sqm	1774sqft
B. REGS PART M:	M4(2)	
NDSS COMPLIANT:	YES	
CHARACTER AREA:	RYEBANK PARK	



A	20.08.24	Window Omission removed	JC
Rev	Date	Amendment	Initials
Project:			
PHASE 4 THE LANDINGS			
FORD, WEST SUSSEX			
Client:			
VISTRY SOUTH EAST			
Drawing:			
PROPOSED HOUSETYPE ELEVATIONS			
HT - "581" VARIANT "V4"			
Drawing no:			Rev:
22.1706.5357			A
Scale@A1:	1:50	Date:	AUG 24
Drawn:	JC/CH	Checked:	YC

finc	
61-63 New London Road Chelmsford Essex CM2 0ND	
T: +44 (0)1245 933888	
W: www.fincarchitects.com	
E: company@fincarchitects.com	

© FINEC Architects Limited holds the copyright to all the information contained within this document and their written consent must be obtained before copying or using the data other than for the purpose it was originally supplied.

All dimensions and measurements to be checked on site.

Do not scale from this drawing. This drawing is to be printed in colour.

PLANNING ISSUE