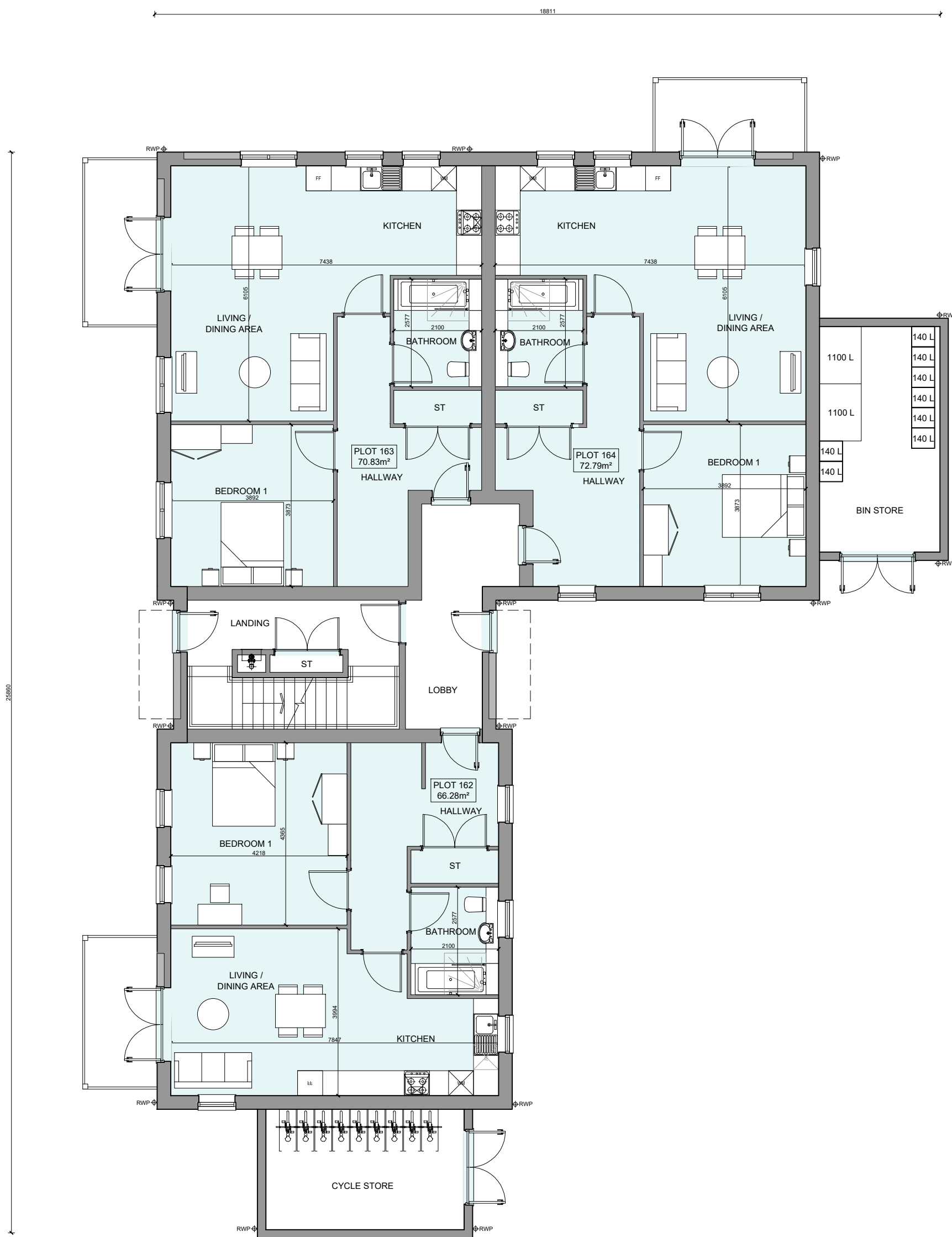


PHASE 4 THE LANDINGS, FORD, WEST SUSSEX
PROPOSED FLATBLOCK PLANS - PLOTS 162-170



GROUND FLOOR PLAN



FIRST FLOOR PLAN



A16/08/24Changes to layouts and elevationsZA			
Rev	Date	Amendment	Initials
Project: PHASE 4 THE LANDINGS FORD, WEST SUSSEX			
Client: VISTRY SOUTH EAST			
Drawing: PROPOSED FLATBLOCK PLANS PLOTS 162-170			
Drawing no: 22.1706.5550		Rev: A	
Scale@A1: 1:100	Date: AUG 24	Drawn: ZA	Checked: YC

finc

61-63 New London Road | Chelmsford | Essex | CM2 0ND
T: +44 (0)1245 933988
W: www.fincarchitects.com
E: company@fincarchitects.com

Disclaimers: © Finc Architects Limited holds the copyright to all the information contained within this document and their written consent must be obtained before copying or using the data other than for the purpose it was originally supplied.
All dimensions and measurements to be checked on site.
Do not scale from this drawing. This drawing is to be printed in colour.

PLANNING ISSUE

APRIL DISTRICT COUNCIL FTS/24/005