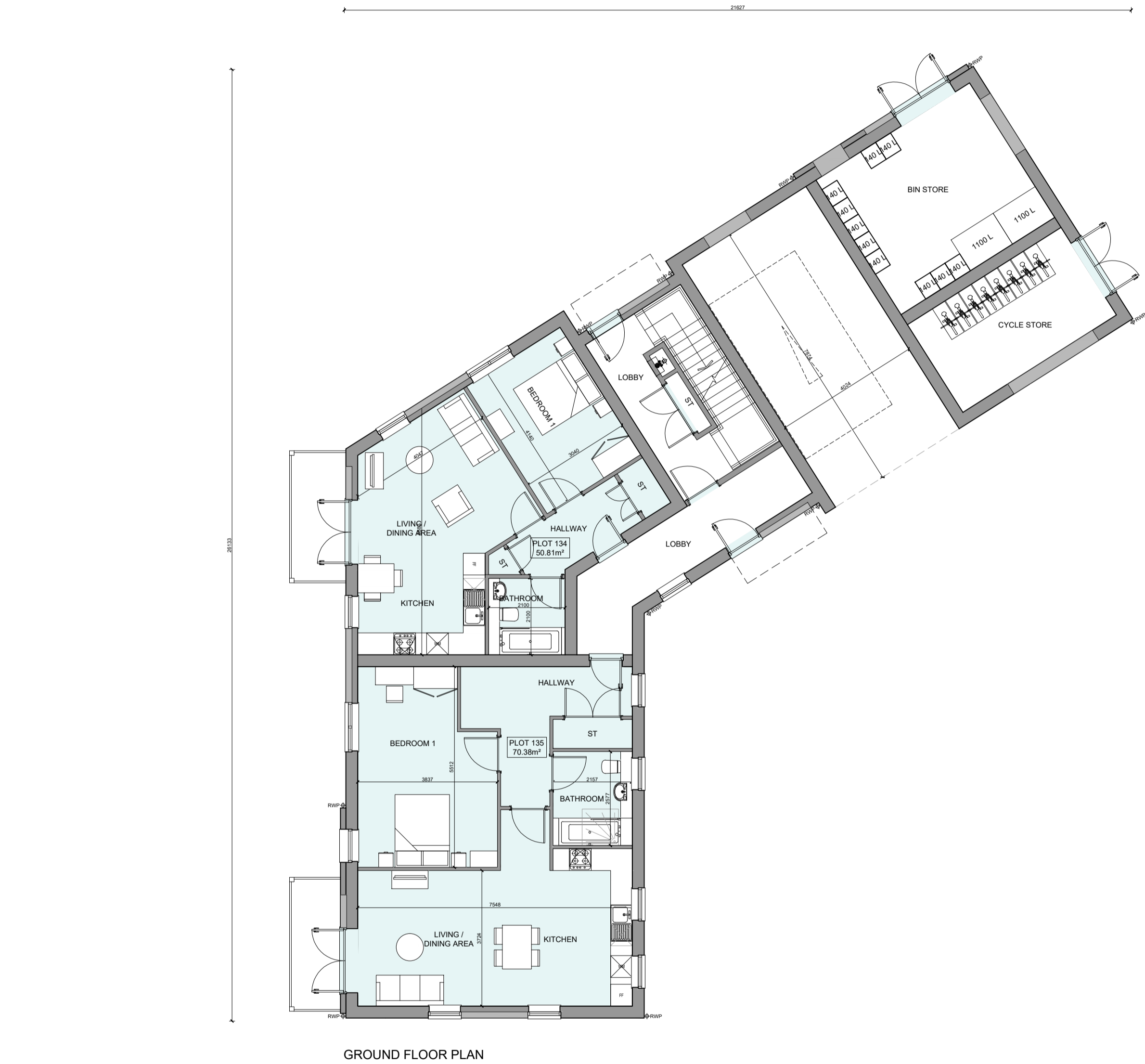
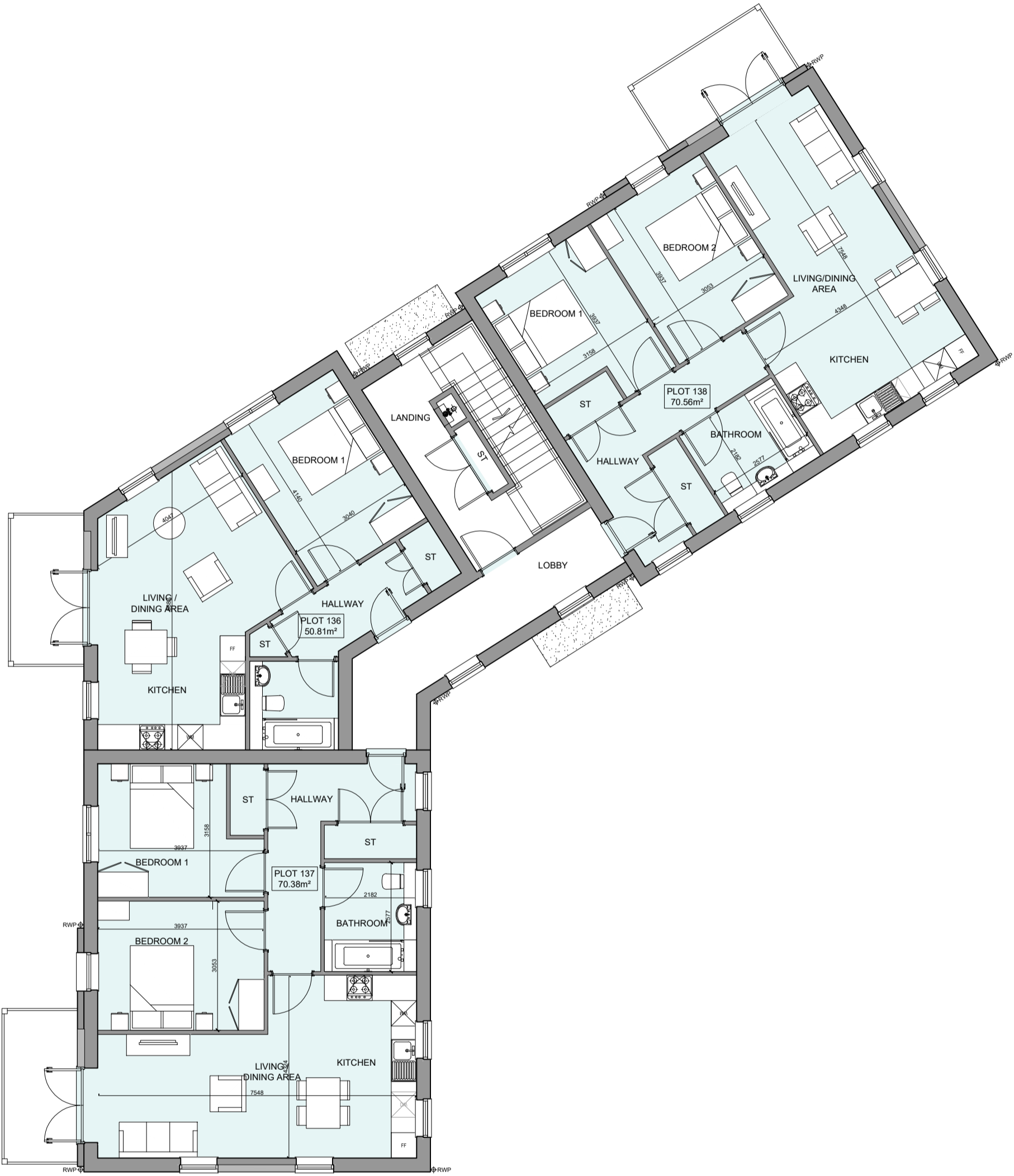


PHASE 4 THE LANDINGS, FORD, WEST SUSSEX  
PROPOSED FLATBLOCK PLANS - PLOTS 134-141



GROUND FLOOR PLAN



FIRST FLOOR PLAN



A 16/08/24 Changes to layouts and elevations				ZA
Rev	Date	Amendment		Initials
Project: PHASE 4 THE LANDINGS FORD, WEST SUSSEX				
Client: VISTRY SOUTH EAST				
Drawing: PROPOSED FLATBLOCK PLANS PLOTS 134-141				
Drawing no: 22.1706.5500			Rev: A	
Scale@A1: 1:100	Date: AUG 24	Drawn: ZA	Checked: YC	

**finc**

61-63 New London Road | Chelmsford | Essex | CM2 0ND  
T: +44 (0)1245 933988  
W: [www.fincarchitects.com](http://www.fincarchitects.com)  
E: [company@fincarchitects.com](mailto:company@fincarchitects.com)

© Finc Architects Limited holds the copyright to all the information contained within this document and their written consent must be obtained before copying or using the data other than for the purpose it was originally supplied.  
All dimensions and measurements to be checked on site.  
Do not scale from this drawing. This drawing is to be printed in colour.

PLANNING ISSUE