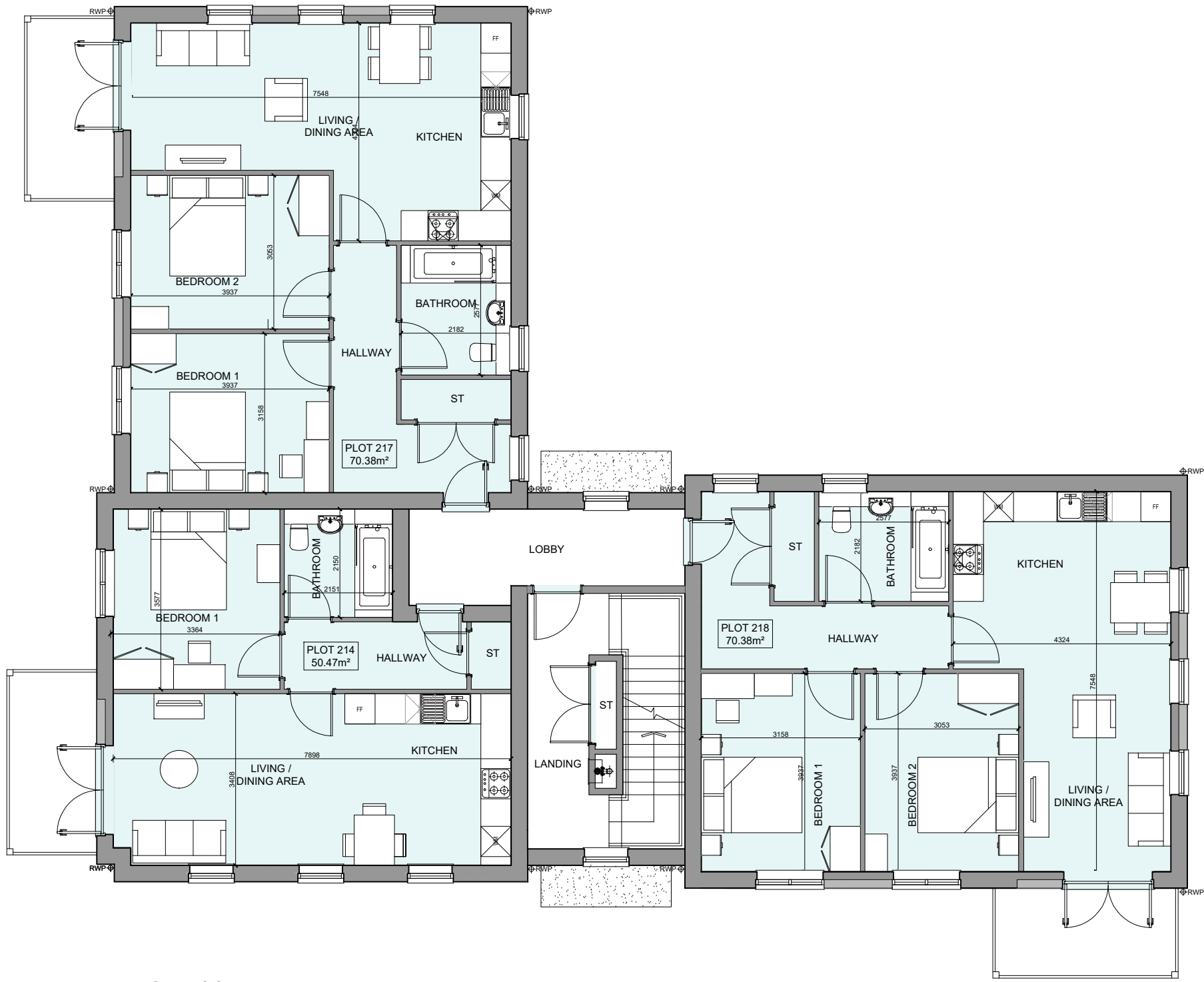


PHASE 4 THE LANDINGS, FORD, WEST SUSSEX
PROPOSED FLATBLOCK PLANS - PLOTS 214-221



A	16/08/24	Changes to layouts and elevations			ZA
Rev	Date	Amendment	Initials		
Project:					
PHASE 4 THE LANDINGS					
FORD, WEST SUSSEX					
Client:					
VISTRY SOUTH EAST					
Drawing:					
PROPOSED FLATBLOCK PLANS					
PLOTS 214-221					
Drawing no:					Rev:
22.1706.5650					A
Scale@A1: 1:100					
Date:		AUG 24		Drawn:	ZA
Checked:		YC		YOUNG	

finc

© FINEC Architects Limited holds the copyright to all the information contained within this document and their written consent must be obtained before copying or using the data other than for the purpose it was originally supplied.

61-63 New London Road | Chelmsford | Essex | CM2 0ND

T: +44 (0)1245 933988

W: www.finecarchitects.com

E: company@finecarchitects.com

