

HT122_1B2P
GF FLAT: 54.4 SQM / 585 SQFT
PART M: M4(2)

FF FLAT: 69.2 SQM / 745 SQFT
PART M: M4(1)

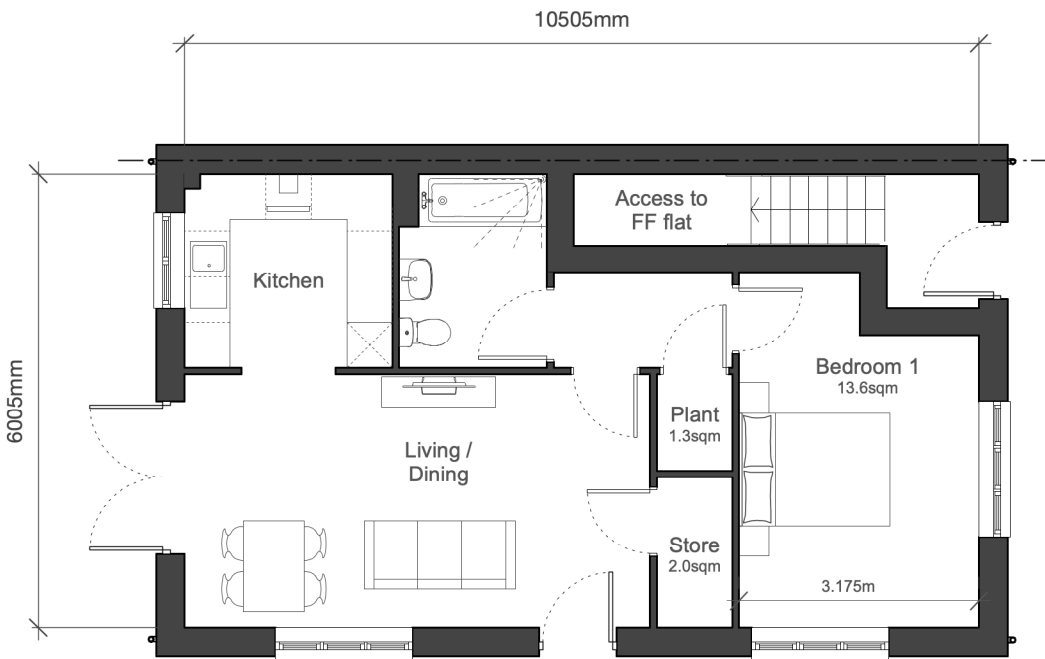
NOTES:

Please refer to materials plan for external wall and roof finish materials on an plot by plot basis.

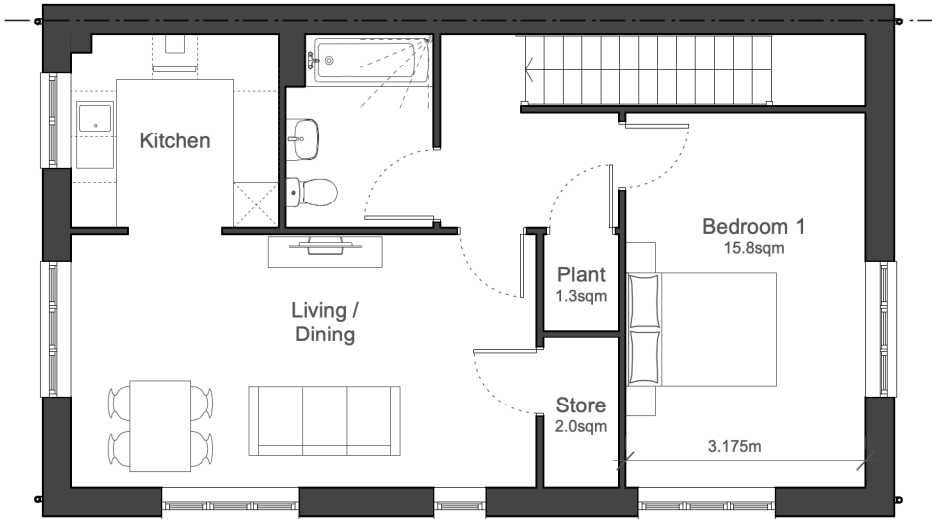
OG = obscure glazing

Built-in wardrobe additional storage areas is the area in excess of 0.72sqm in a double bedroom and 0.36sqm in a single bedroom.

Under stairs storage area is assumed to be 1sqm where under the stairs plus any additional area not under the stairs.



Ground Floor: Ground Floor Flat (1B2P, M4(2))



First Floor: First Floor Flat (1B2P, M4(1))

GROUND FLOOR FLAT:

NDSS GIA AREA SCHEDULE		
	REQUIRED AREA	MEASURED AREA
OVERALL	70 sqm	76.8 sqm
BEDROOM 1	11.5 sqm	12.8 sqm
BEDROOM 2	7.5 sqm	7.6 sqm
STORAGE	2 sqm	2.6 sqm

PLOT NUMBERS:

Detached:
AS: 49
OPP:60, 119, 315

End terrace / semi-detached:
OPP: 80

FIRST FLOOR FLAT:

NDSS GIA AREA SCHEDULE		
	REQUIRED AREA	MEASURED AREA
OVERALL	70 sqm	76.8 sqm
BEDROOM 1	11.5 sqm	12.8 sqm
BEDROOM 2	7.5 sqm	7.6 sqm
STORAGE	2 sqm	2.6 sqm

PLOT NUMBERS:

Detached:
AS: 50
OPP: 61, 120, 316

End terrace / semi-detached:
OPP: 81

