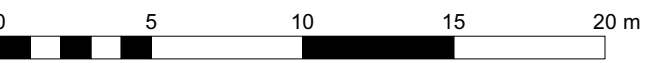


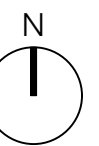


- RM1 Boundary
- Timber closeboard fence 1.8m high
- Timber closeboard gate 1.8m high
- Timber post and wire fence 1.2m high
- Estate railing in black 1m high
- Estate rail gate in black 1m high
- Cleft chestnut post and rail fence 1.2m high
- Steel palisade fence 1.8m high
- Brick wall 1.8m high
- Secondary and Tertiary Streets (incl parking bays / driveways): Macadam surface road
Street Kerb/edging: Charcon British Standards BN Kerb 145x255mm, 125mm upstand
- Mews Street: Charcon Woburn Rumbled in Autumn, 200x134, 45deg herringbone
Kerb/edging: Charcon Eco Countryside Kerb 145x255, 50mm upstand
- Mews Junction: Charcon Woburn Rumbled in Brindle, 200x134, 45deg herringbone
Kerb/edging: Charcon Eco Countryside Classic Flat Top Edging 50x250, 50mm upstand
- Parking Courtyards: Charcon Woburn Rumbled in Brindle, 200x134, 45deg herringbone
Kerb/edging: Charcon Eco Countryside Classic Flat Top Edging 50x250, 50mm upstand/laid flush
- Driveways: Charcon Woburn Rumbled in Autumn, 200x134, stretcher bond
- Thresholds: Charcon Eco Countryssets, 220x100, stretcher bond
- Public footpaths/Cycleway: Macadam surface
Kerb/edging: Charcon British Standard Flat Top, 50x250mm, laid flush
- Private footpaths: Charcon Stonemaster Flag, 450x450mm in sandy buff, stack bond
- POS footpaths: Compacted hoggin
- Rumble Strips: Charcon Woburn Original in Graphite, 200x134mm, stretcher bond
- Apartment patios: Charcon Stonemaster Flag, 450x450mm in sienna buff, stack bond
- Bin Collection Points: Charcon Woburn Rumbled in Autumn, 134x134mm, stack bond
- Timber Seat
- Timber picnic bench
- Waste bin
- Bike stores

Notes/Revisions



Ford Airfield
Vistry



Hardworks and Boundaries 10 of 10 RM1

Status: For Planning		Drawn by: DL	Checked by: TF
Project Number: 180641	Scale @ A1: 1:250	Date: 08/2024	
Drawing Number: TOR-RM1-XX-DR-L-P-011		Revision: A	

© Crown Copyright and database rights 2024 OS Licence no. AC0000849896

© tor&co 2024

Do not scale from this drawing

tor
&co

Everdene House
Deanleigh Road
Bournemouth BH17 7DU
020 3664 6755
enquiries@torandco.com
www.torandco.com