

- NOTES:
- THIS DRAWING IS TO BE READ IN CONJUNCTION WITH THE RELEVANT SPECIFICATION, INC. RISK ASSESSMENTS AND ALL OTHER RELATED DRAWINGS ISSUED BY THE ENGINEER.
 - DO NOT SCALE FROM THIS DRAWING. WORK FROM FIGURED DIMENSIONS ONLY.
 - ALL DIMENSIONS SHOWN ON THIS DRAWING ARE IN METRES UNLESS OTHERWISE STATED.
 - ALL DIMENSIONS, LEVELS AND SURVEY GRID CO-ORDINATES ARE TO BE CHECKED ON SITE AND THE ENGINEER NOTIFIED IMMEDIATELY OF ANY DISCREPANCIES PRIOR TO THE COMMENCEMENT OF THE WORKS.
 - NO DEVIATION FROM THE DETAILS SHOWN ON THIS DRAWING IS PERMITTED WITHOUT PRIOR PERMISSION FROM THE ENGINEER.
 - ANY WORKS OUTSIDE RED SITE BOUNDARY ARE FOR INFORMATION PURPOSES ONLY. UNLESS SPECIFICALLY NOTED, ALL WORKS OUTSIDE THE SITE BOUNDARY WILL BE UNDERTAKEN BY OTHERS UNDER A SEPARATE CONTRACT.

KEY

- IRM BOUNDARY
- BLUE LINE BOUNDARY
- 2.4m x 45m VISIBILITY SPLAY (30mph)
- 2.4m X 17m LTN 1/20 VISIBILITY SPLAY
- AREA OUTSIDE OF IRM BOUNDARY

VEHICLES USED:

Arun District Dennis Eagle Twin Pack 22 (OLTP22)

- Overall Length: 12.00m
- Overall Width: 2.55m
- Overall Body Height: 3.50m
- Min Body Ground Clearance: 0.251m
- Track Width: 2.00m
- Lock to lock time: 4.00s
- Wait to Wait Turning Radius: 10.250m

Kaiser 6x2 GA Tanker

- Overall Length: 9.530m
- Overall Width: 2.520m
- Overall Body Height: 3.50m
- Min Body Ground Clearance: 0.344m
- Track Width: 2.00m
- Lock to lock time: 4.00s
- Kerb to Kerb Turning Radius: 8.210m

Single Deck Bus

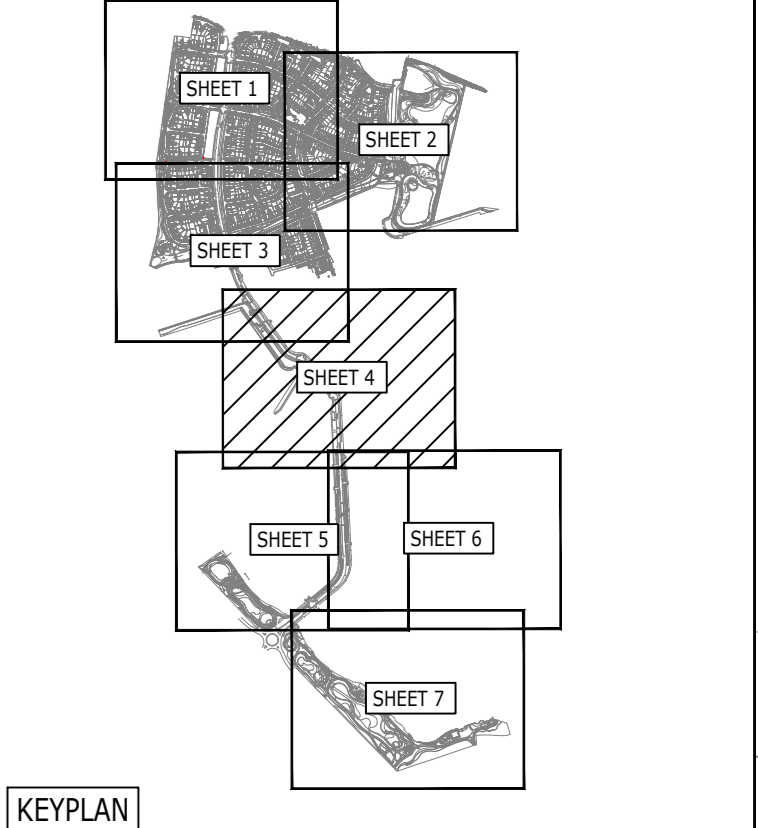
- Overall Length: 11.980m
- Overall Width: 2.440m
- Overall Body Height: 3.50m
- Min Body Ground Clearance: 0.305m
- Track Width: 2.00m
- Lock to lock time: 6.00s
- Kerb to Kerb Turning Radius: 10.568m

Max Legal Articulated Vehicle (16.5m)

- Overall Length: 16.500m
- Overall Width: 2.400m
- Overall Body Height: 3.50m
- Min Body Ground Clearance: 0.305m
- Track Width: 2.00m
- Lock to lock time: 6.00s
- Kerb to Kerb Turning Radius: 8.870m

Large Car

- Overall Length: 5.079m
- Overall Width: 1.872m
- Overall Body Height: 1.511m
- Min Body Ground Clearance: 0.101m
- Track Width: 1.521m
- Lock to lock time: 4.00s
- Kerb to Kerb Turning Radius: 5.900m



0m 5m 25m

Scale: 1:500 @ A0

PRELIMINARY

FOR PLANNING

D	UPDATED TO SUIT LATEST SITE LAYOUT	BT	BS	DH	10/12/24
C	VISIBILITY REMOVED	GL	BS	DH	30/10/24
B	VISIBILITY ADDED	BT	BS	MB	14/10/24
A	IRM BOUNDARY UPDATED	BT	KM	AD	15/08/24
Rev	Description	Dwn	Chk	App	Date

ARDENT CONSULTING ENGINEERS
AN EMPLOYEE OWNED COMPANY

Third Floor
The Halmark Building
52-56 Leadenhall Street
London
EC3M 5JE
Tel: 020 7680 4088
Web: www.ardent-ce.co.uk
E-mail: enquiries@ardent-ce.co.uk

worksafe
www.ardent.com

SSIP
MEMBER

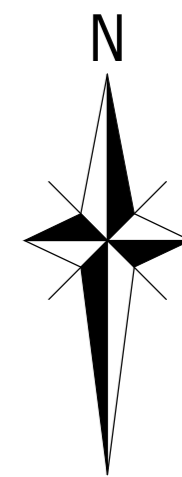
Client: **VISTRY SOUTH EAST**

Project Title: **THE LANDINGS, LAND AT FORD AIRFIELD, FORD**

Drawing Title: **IRM - VEHICLE TRACKING AND VISIBILITY PLAN (SHEET 4 OF 7)**

Drawn by	BT	Checked by	DV	Approved by	DH
AO Scale	1:500	Date	07/08/2024	Revision	D

Drawing Number: **2205771-D013**

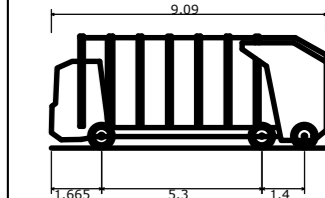


- NOTES:
1. THIS DRAWING IS TO BE READ IN CONJUNCTION WITH THE RELEVANT SPECIFICATION, D.M. RISK ASSESSMENTS AND ALL OTHER RELATED DRAWINGS ISSUED BY THE ENGINEER.
 2. DO NOT SCALE FROM THIS DRAWING. WORK FROM FIGURED DIMENSIONS ONLY.
 3. ALL DIMENSIONS SHOWN ON THIS DRAWING ARE IN METRES UNLESS OTHERWISE STATED.
 4. ALL DIMENSIONS, LEVELS AND SURVEY GRID CO-ORDINATES ARE TO BE CHECKED ON SITE AND THE ENGINEER NOTIFIED IMMEDIATELY OF ANY DISCREPANCIES PRIOR TO THE COMMENCEMENT OF THE WORKS.
 5. NO DEVIATION FROM THE DETAILS SHOWN ON THIS DRAWING IS PERMITTED WITHOUT PRIOR PERMISSION FROM THE ENGINEER.
 6. ANY WORKS OUTSIDE RED SITE BOUNDARY ARE FOR INFORMATION PURPOSES ONLY. UNLESS SPECIFICALLY NOTED, ALL WORKS OUTSIDE THE SITE BOUNDARY WILL BE UNDERTAKEN BY OTHERS UNDER A SEPARATE CONTRACT.

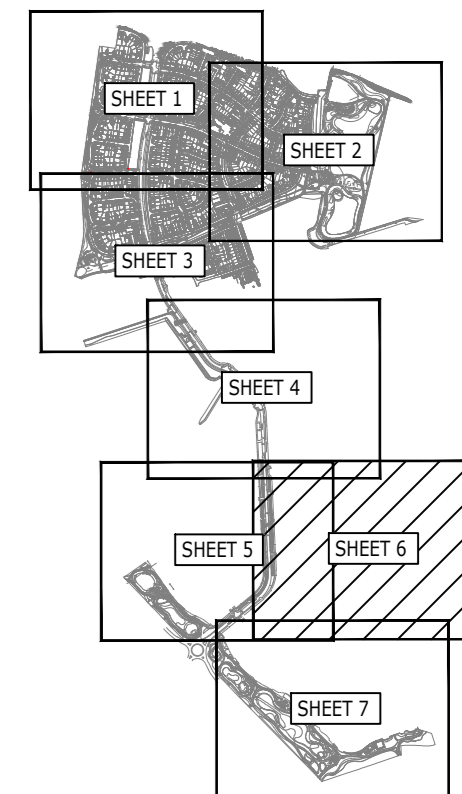
KEY

- IRM BOUNDARY
- BLUE LINE BOUNDARY
- 2.4m x 45m VISIBILITY SPLAY (30mph)
- 2.4m X 17m LTN 1/20 VISIBILITY SPLAY
- AREA OUTSIDE OF IRM BOUNDARY

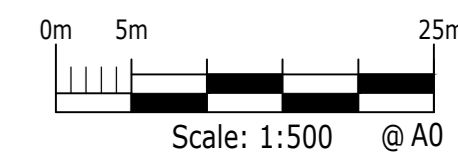
VEHICLES USED:



Arun District Dennis Eagle Twin Pack 22 (OUTP22)
Overall Length 7.55m
Overall Width 2.55m
Overall Body Height 2.55m
Min Body Ground Clearance 0.751m
Track Width 2.00m
Wheel to Wall Turning Radius 10.250m



KEYPLAN



PRELIMINARY

FOR PLANNING

E	UPDATED TO SUIT LATEST SITE LAYOUT	BT	MR	AD	17/12/24
D	UPDATED TO SUIT LATEST SITE LAYOUT	BT	MR	AD	03/12/24
C	VISIBILITY REMOVED	GL	BS	DH	30/10/24
B	VISIBILITY ADDED	BT	BS	MR	14/10/24
A	IRM BOUNDARY UPDATED	BT	KM	AD	15/08/24
Rev	Description	Dwn	Chk	App	Date

ARDENT CONSULTING ENGINEERS
AN EMPLOYEE OWNED COMPANY

Third Floor
The Hallmark Building
52-56 Leadenhall Street
London
EC3M 5JE

Tel: 020 7680 4088
Web: www.ardent-ce.co.uk
E-mail: enquiries@ardent-ce.co.uk

worksafe
consultant
www.worksafeconsultant.com

SSIP

MEMBER
CONTRACTORS
ASSOCIATION

Client

VISTRY SOUTH EAST

Project Title:

THE LANDINGS, LAND AT FORD AIRFIELD, FORD

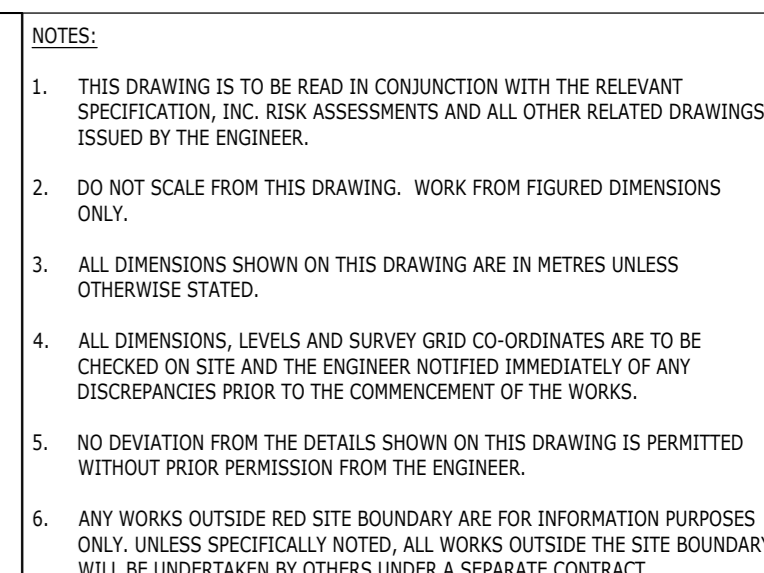
Drawing Title:

IRM - VEHICLE TRACKING AND VISIBILITY PLAN (SHEET 6 OF 7)

Drawn by	BT	Checked by	DV	Approved by	DH
AD Scale	1:500	Date	07/08/2024	Revision	E

Drawing Number
2205771-D015

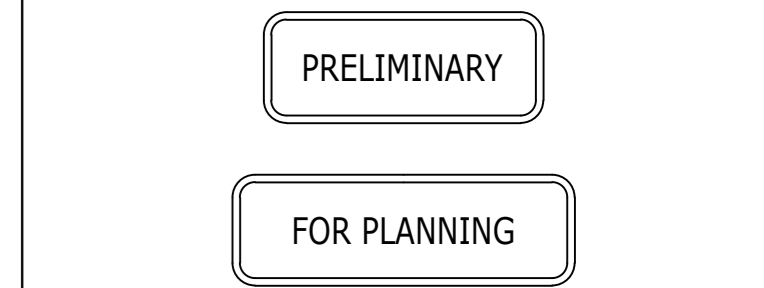
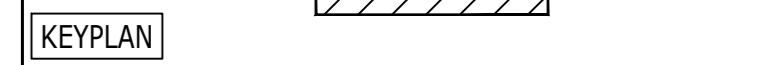




VEHICLES USED:

Diagram illustrating the dimensions of the vehicles used:

- Overall Length: 9.63m
- Overall Width: 2.52m
- Overall Body Height: 3.85m
- Min front ground Clearance: 0.144m
- Track Width: 2.52m
- Lock to lock: 4.08m
- Kerb to Kerb Turning Radius: 8.21m



ARDENT CONSULTING ENGINEERS
AN EMPLOYEE OWNED COMPANY

Third Floor
The Hallmark Building
52-56 Leadenhall Street
London
EC3M 5JE

Tel: 020 7690 4088
Web: www.ardent-ce.co.uk
E-mail: enquiries@ardent-ce.co.uk

Project Title: _____

Drawing Title:

**IRM - VEHICLE TRACKING AND
VISIBILITY PLAN (SHEET 7 OF 7)**

2205771-D016