



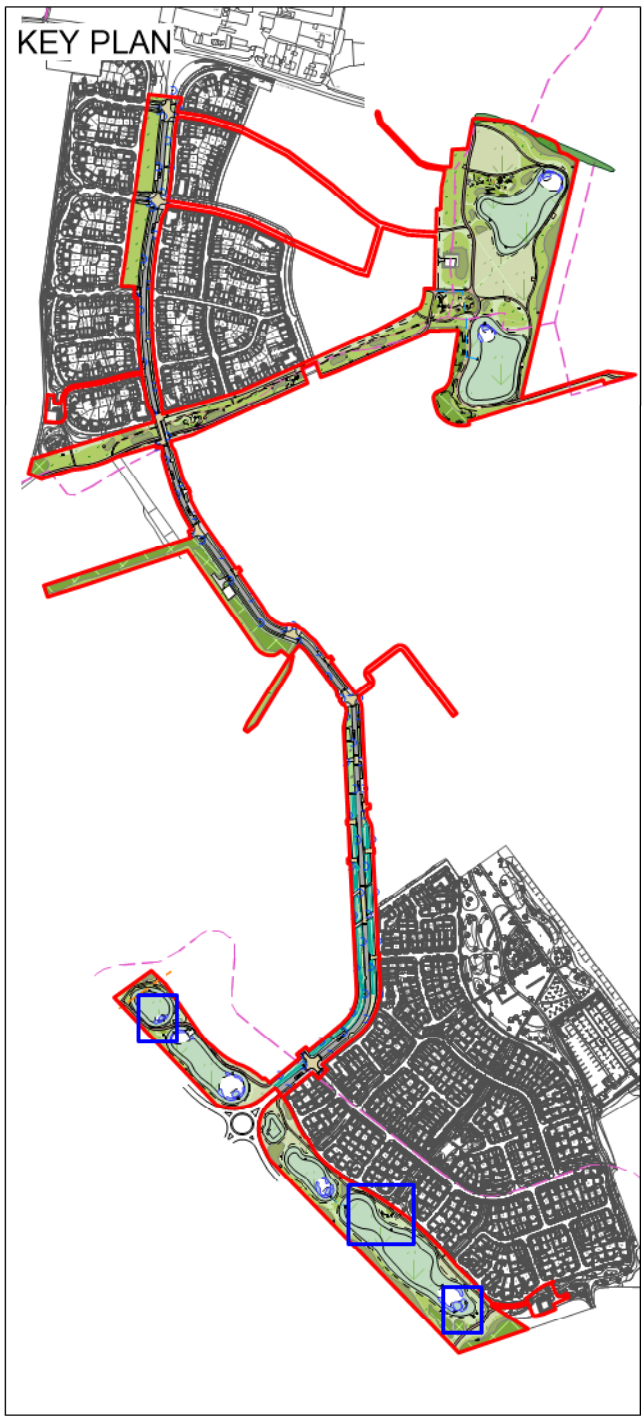
Ryebank Park LAP 1



Ryebank Park LAP 2



Ryebank Park LAP 3



Local Area for Play (LAP) / Doorstep play

Target age group: Under 6's

Total designated space:

LAP 1: 350Sqm  
LAP 2: 300Sqm  
LAP 3: 300Sqm

Theme: Sound and movement. Strong emphasis on creative expression including music and dramatic play

Target skills development: Fine motor skills / imagination / creativity / empathy and emotional regulation

Number of play experiences:

LAP 1: 7no.  
LAP 2: 6no.  
LAP 3: 6no.

Play features / experiences (subject to consultation and coordination of final design - to be agreed via condition):

- Interactive panels
- Musical play features
- Talking tubes
- Mini theatre façade
- Play tables / games
- Climbing features
- Mound slides / climbs

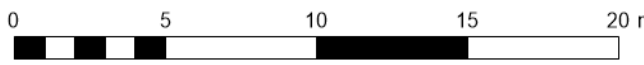
Other features to be included / notes:

- Bench seating for supervising adults
- Bins
- Mounding, amenity grass areas to provide spill out / flexible and supervised playable space
- Ornamental planting
- Deciduous trees for summer shade
- Shrub planting providing enclosure and wind buffering

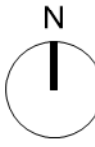


- RM4 Boundary
  - Extent of equipped and natural play area
  - 25m LEAP buffer
  - Public Footpath: Compacted hoggin, variable width. Timber edging
  - Grass matting safety surfacing
  - Timber picnic bench
  - Proposed bench
  - Waste bin
  - Sheffield cycle stand (or equal approved)
  - Existing vegetation to be retained (Refer to arboriculturists AIA)
  - Proposed trees
  - Low single-species hedgerow
  - Native scrub
  - Woodland structure planting
  - Amenity grass
  - Long grass margins
  - Wildflower meadow
  - Private ornamental planting
  - Rear gardens
  - Private front lawn
- Distribution and types of play features shown indicatively, to be agreed by condition
- Individual play experience features

Notes/Revisions



Ford Airfield  
Vistry



Play Provision Ryebank Park  
Reserved Matters Infrastructure

Status:	Drawn by:	Checked by:
For Planning	DL	TF
Project Number:	Scale @ A1:	Date:
180641	1:250	08/2024
Drawing Number:		Revision:
TOR-RMIN-XX-DR-L-P-016		

© Crown Copyright and database right 2024 OS Licence no. AC000084896

© tor&co 2024

Scale for planning purposes only

tor  
&co

Everdene House  
Deansleigh Road  
Bournemouth BH17 7DU  
020 3664 6755  
enquiries@torandco.com  
www.torandco.com