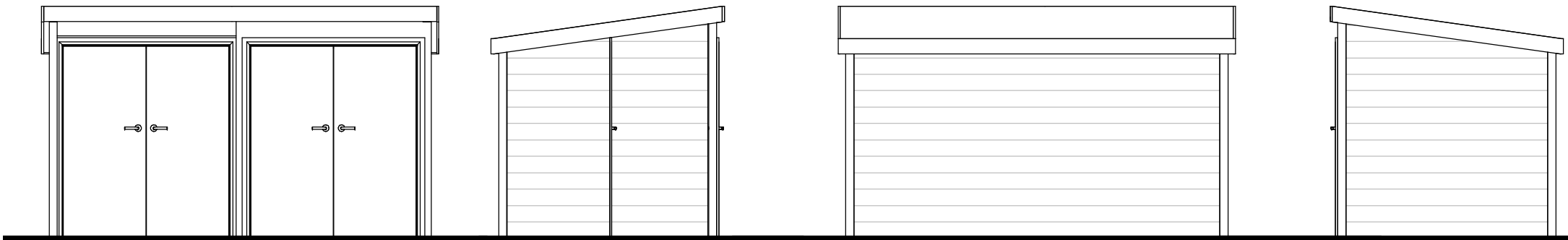


Bin and bike store, timber clad and supported on 6 x 75mm posts and felt roof over.

Proposed Bike and Bin Store



Bike and Bin store - Front Elevation

Side Elevation

Rear Elevation

Side Elevation

Revisions

0.500.511.522.5

SCALE 501:m

Drawing Number	2024/64	Sheet	1 of 1
Size	A3	Scale	1:50

Project

Cycle and bin store
July 2024


Job Title


47 Aldwick Road
Bognor Regis
PO21 2NJ

Do Not scale from this drawing except for planning as photocopies will be subject to distortion
Drawings to be read in conjunction with all other Designers and structural engineers contract drawings and specifications:
Any discrepancies must be brought to the attention of the Designer immediatialy
The contractor must verify all dimensions by site measurement before ordering materials or manufacturing components
Substitute materials and products to those named will be acceptable if proven to be of equal or higher performance and not in conflict with other elements

M.J.Humphrey

Ltd

 RICS

 **cabe**
chartered association
of building engineers

Mel Humphrey MRICS, MBEng
9 Aldsworth Avenue
Goring By Sea
West Sussex
BN12 4XQ

Adam Humphrey
230 Dominion Road
Worthing
West Sussex
BN14 8JL

Mel@mjhumphrey.co.uk
07701055182

Adam@mjhumphrey.co.uk
07812419142