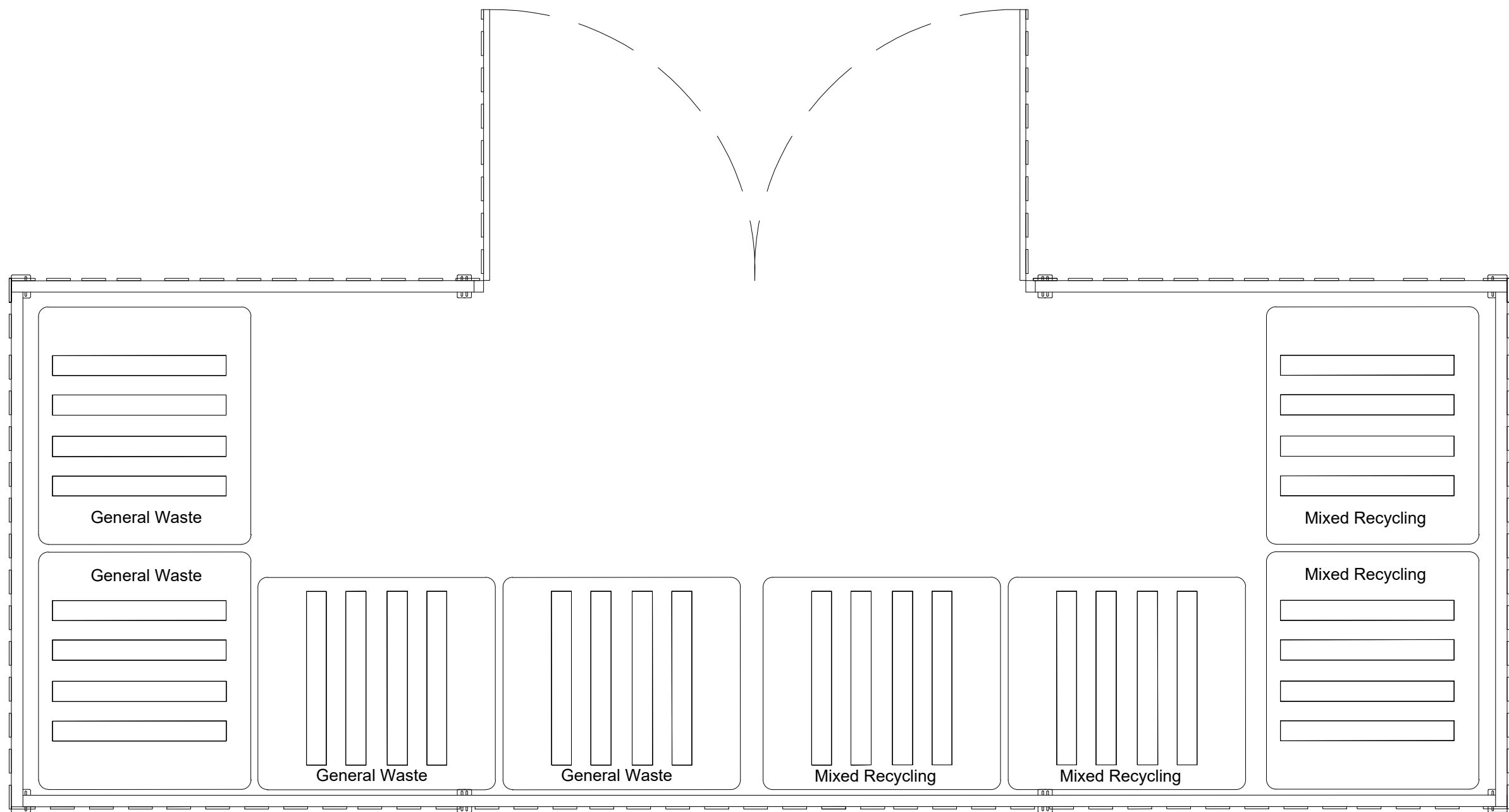
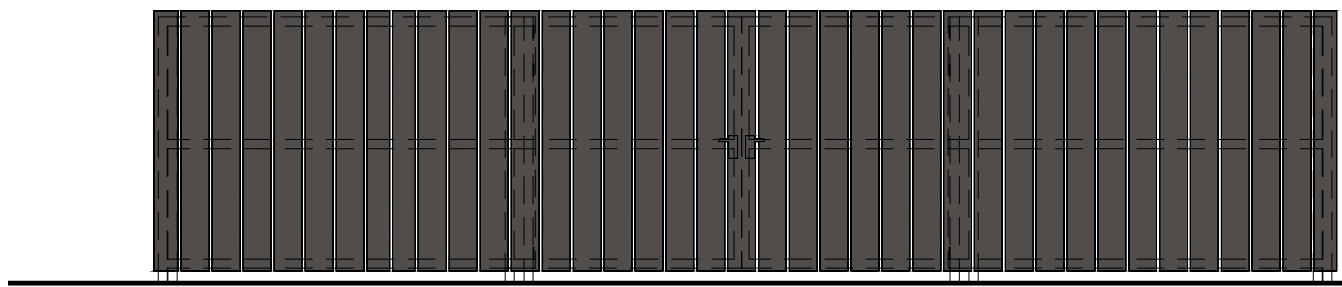


Layout Plan
Scale: 1:1000

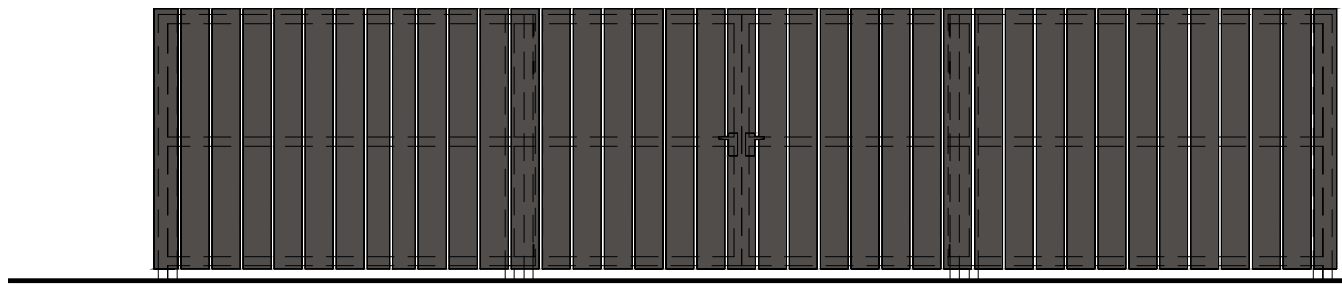


Bin Store Plan
Scale 1:25

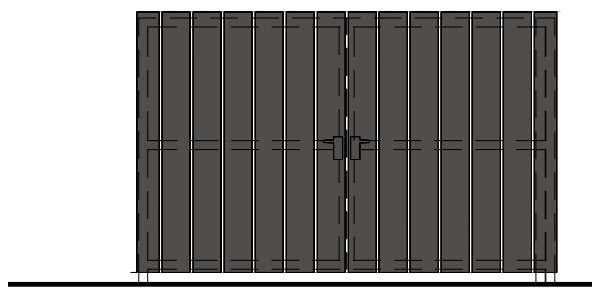
NOTE: 10m2 Recycling & 10m2 General Waste



External Bin Store - Front Elevation
Scale 1:50



External Bin Store - Rear Elevation
Scale 1:50



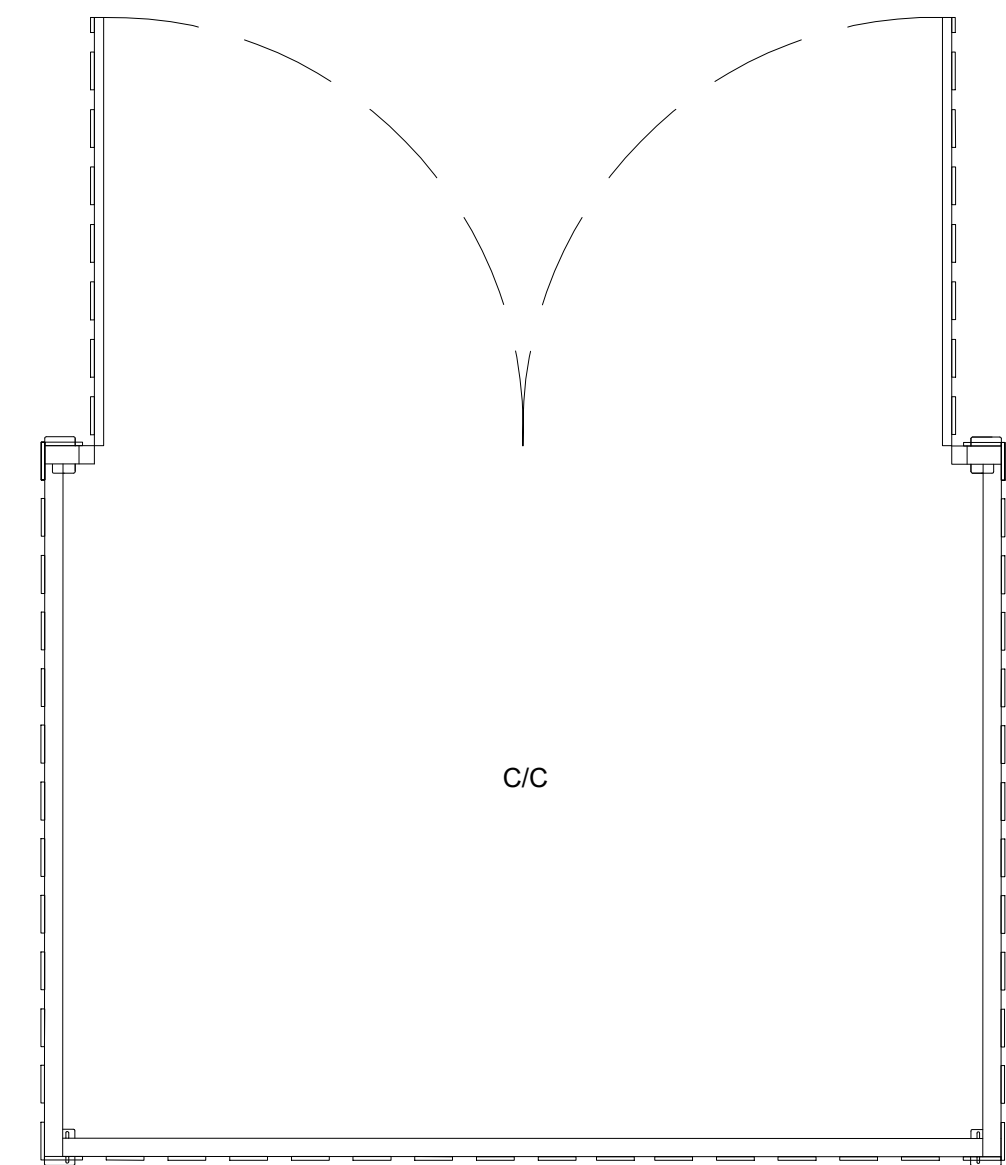
External Bin Store - Side Elevation
Scale 1:50

NOTE: Bin stores to be formed from 13mm thick trespa planks on galvanised structural frame.

Bin store to be bolted to new cast concrete base, laid to appropriate falls to allow free draining to gully.

Bin store to be dark grey/ anthracite.

Gates to Bin Store/Condensor Compound to be self locking & self closing as per Secured By Design requirements.



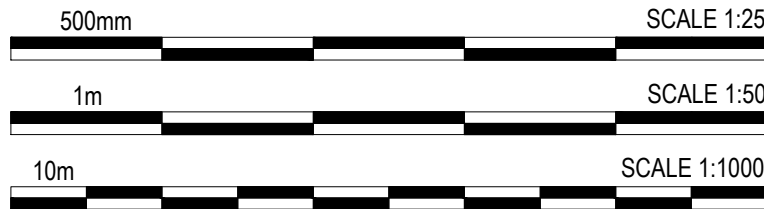
Condenser Compound
Scale 1:25



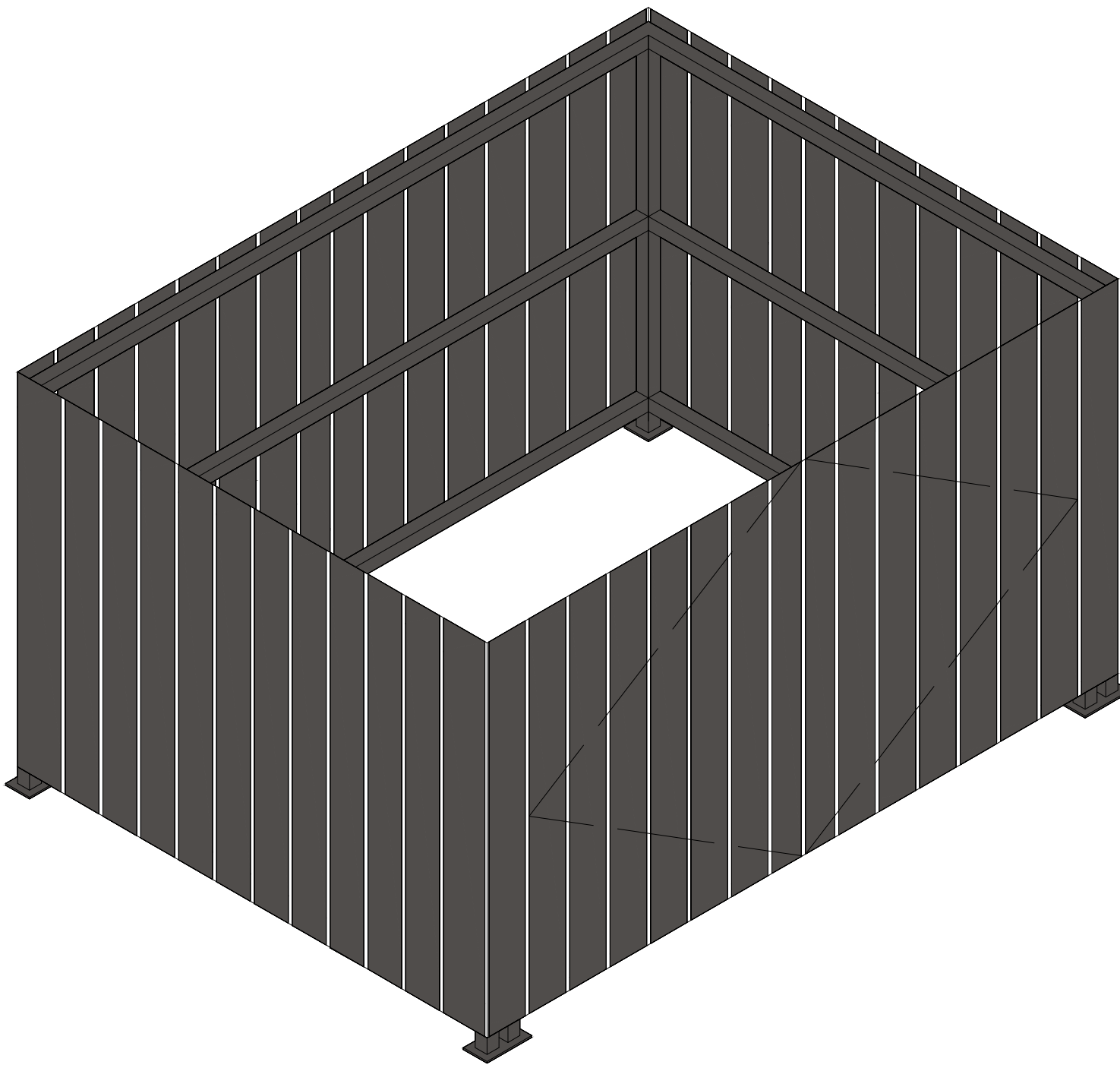
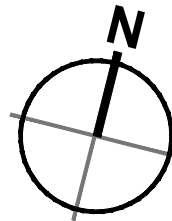
Substation
Typical glass reinforced plastic housed substation to meet energy and power distributor's specification.

Size: 4.0m x 4.0m x 3.0m high, with double-door aperture of 2.7m x 2.1m high.

Colour: 18 B 25 (Merlin Grey) to meet standard approved colours defined by energy and power distributor in accordance with BS 4800: 2011.



- Dimensions are in millimeters, unless stated otherwise.
- Scaling of this drawing is not recommended.
- It is the recipient's responsibility to print this document to the correct scale.
- All relevant drawings and specifications should be read in conjunction with this drawing.



Indicative Axonometric - Bin Store/ Condenser Compound
Scale NTS

P02	Revised to suit redline boundary.	LAH	AJL	31.10.24
P01	Initial Planning Issue	AMQ	AJL	25.10.24
rev	amendments	by	ckd	date

Oldlands Farm Phase 3, Newlands Road, Bognor Regis

Ancillary Building Details

LOD 1	LOI 1
-------	-------

PANATTONI



Newark Beacon, Cafferata Way, Newark, Nottinghamshire NG24 2TN
t. +44 (0)1636 653027 e. info@umcarchitects.com

RIBA PoW Stage:	3 - Spatial Coordination
Document Suitability:	S1
Drawn / Checked:	AMQ / AJL
Date:	27/09/2024
Scale:	As Noted A1
UMC Project Number:	23361
Document Reference:	Drawing no: Revision:
23361 - UMC - ZZZZ - SI - DR - A	0704 P02